



LibreOffice
The Document Foundation

Impress Guide

Chapter 1

Introducing Impress

Copyright

This document is Copyright © 2007–2013 by its contributors as listed below. You may distribute it and/or modify it under the terms of either the GNU General Public License (<http://www.gnu.org/licenses/gpl.html>), version 3 or later, or the Creative Commons Attribution License (<http://creativecommons.org/licenses/by/3.0/>), version 3.0 or later.

All trademarks within this guide belong to their legitimate owners.

Contributors

Michele Zarri
Chad D. Lines
Jaimon Jacob

T. Elliot Turner
Low Song Chuan
Peter Schofield

Jean Hollis Weber
Muhammad Sufyan Zainalabidin
Hazel Russman

Feedback

Please direct any comments or suggestions about this document to:
documentation@global.libreoffice.org

Acknowledgments

This chapter is based on Chapter 1 of the *OpenOffice.org 3.3 Impress Guide*. The contributors to that chapter are:

Michele Zarri
Agnes Belzunce
Claire Wood
Linda Worthington

Jean Hollis Weber
Peter Hillier-Brook
Rachel Kartch

Dan Lewis
Gary Schnabl
Hazel Russman

Tim Kampa, Charles Fannan, and Dana Oliver, students in the Technical and Professional Writing Program at San Francisco State University, wrote a previous version of this document for OpenOffice.org 1.1 (copyright Tim Kampa).

Publication date and software version

Published 19 February 2013. Based on LibreOffice 4.0.

Note for Mac users

Some keystrokes and menu items are different on a Mac from those used in Windows and Linux. The table below gives some common substitutions for the instructions in this chapter. For a more detailed list, see the application Help.

Windows or Linux	Mac equivalent	Effect
Tools > Options menu selection	LibreOffice > Preferences	Access setup options
<i>Right-click</i>	<i>Control+click</i> and/or <i>right-click</i> depending on computer setup	Open a context menu
<i>Ctrl (Control)</i>	⌘ (<i>Command</i>)	Used with other keys
<i>F5</i>	<i>Shift+⌘+F5</i>	Open the Navigator
<i>F11</i>	⌘+T	Open the Styles and Formatting window

Contents

Copyright	2
Contributors.....	2
Feedback.....	2
Acknowledgments.....	2
Publication date and software version.....	2
Note for Mac users	2
What is Impress?	4
Starting Impress	4
Main Impress window	5
Slides pane.....	5
Tasks pane.....	6
Workspace.....	7
Toolbars.....	7
Status bar.....	7
Navigator.....	8
Workspace views	8
Normal view.....	9
Outline view.....	9
Notes view.....	9
Handout view.....	10
Slide Sorter view.....	11
Customizing Slide Sorter view.....	11
Moving a slide using Slide Sorter.....	12
Selecting and moving groups of slides.....	12
Working in Slide Sorter view.....	12
Creating a new presentation	12
Formatting a presentation	15
Inserting slides.....	15
New slide.....	15
Duplicate slide.....	15
Selecting a slide layout.....	16
Selecting layout.....	16
Changing layout.....	17
Modifying slide elements.....	17
Adding text.....	18
Adding objects.....	18
Modifying slide appearance.....	18
Modifying a slide show.....	19
Custom animations.....	19
Slide transitions.....	19
Running a slide show	20
Using the Presenter Console	21

What is Impress?

Impress is the presentation (slide show) program included in LibreOffice. You can create slides that contain many different elements, including text, bulleted and numbered lists, tables, charts, and a wide range of graphic objects such as clipart, drawings and photographs. Impress also includes a spelling checker, a thesaurus, text styles, and background styles.

This chapter introduces the Impress user interface and describes how to create a simple slide show using the Presentation Wizard. The other chapters in this guide explain all the features available in Impress that can be used to create more sophisticated slide shows.

To use Impress for more than very simple slide shows requires some knowledge of the elements which the slides contain. Slides containing text use styles to determine the appearance of that text. Creating drawings in Impress is similar to using the Draw program included in LibreOffice. See the *Draw Guide* for more details on how to use the drawing tools.

Starting Impress

You can start Impress in several ways:

- From the LibreOffice Start Center, if no component is open: click on the Presentation icon.
- From the system menu, the standard menu from which most applications are started. On Windows, it is called the Start menu. On Linux with a Gnome desktop, it is called the Applications menu; on a KDE desktop, it is identified by the KDE logo. On Mac OS X, it is the Applications menu. Details vary with your operating system; see the *Getting Started Guide Chapter 1 Introducing LibreOffice*.
- On Windows, use the Presentation selection in the LibreOffice Quickstarter. Similar functions exist for Mac OS X and Linux; see the *Getting Started Guide Chapter 1 Introducing LibreOffice*.
- From any open component of LibreOffice. Click the triangle to the right of the **New** icon on the main menu bar and select *Presentation* from the drop-down menu or choose **File > New > Presentation** on the main menu bar.

Note

When LibreOffice was installed on your computer, in most cases a menu entry for each component was added to your system menu. The exact name and location of these menu entries depend on the operating system and graphical user interface.

When you start Impress for the first time, the Presentation Wizard is shown. Here you can choose from the following options:

- **Empty presentation**, which gives you a blank document
- **From template**, which is a presentation designed with a template of your choice
- **Open existing presentation**
- Click **Create** to open the main Impress window.

For detailed instructions about how to use the Presentation Wizard, see “Creating a new presentation” on page 12.

If you prefer not to use the Presentation Wizard, select the **Do not show this wizard again** option before clicking **Create**. You can enable the wizard again later under **Tools > Options > LibreOffice Impress > General > New document** on the main menu bar and select the **Start with wizard** option.

Main Impress window

The main Impress window (Figure 1) has three parts: the *Slides pane*, the *Workspace*, and the *Tasks pane*. Additionally, several toolbars can be displayed or hidden during the creation of a presentation.

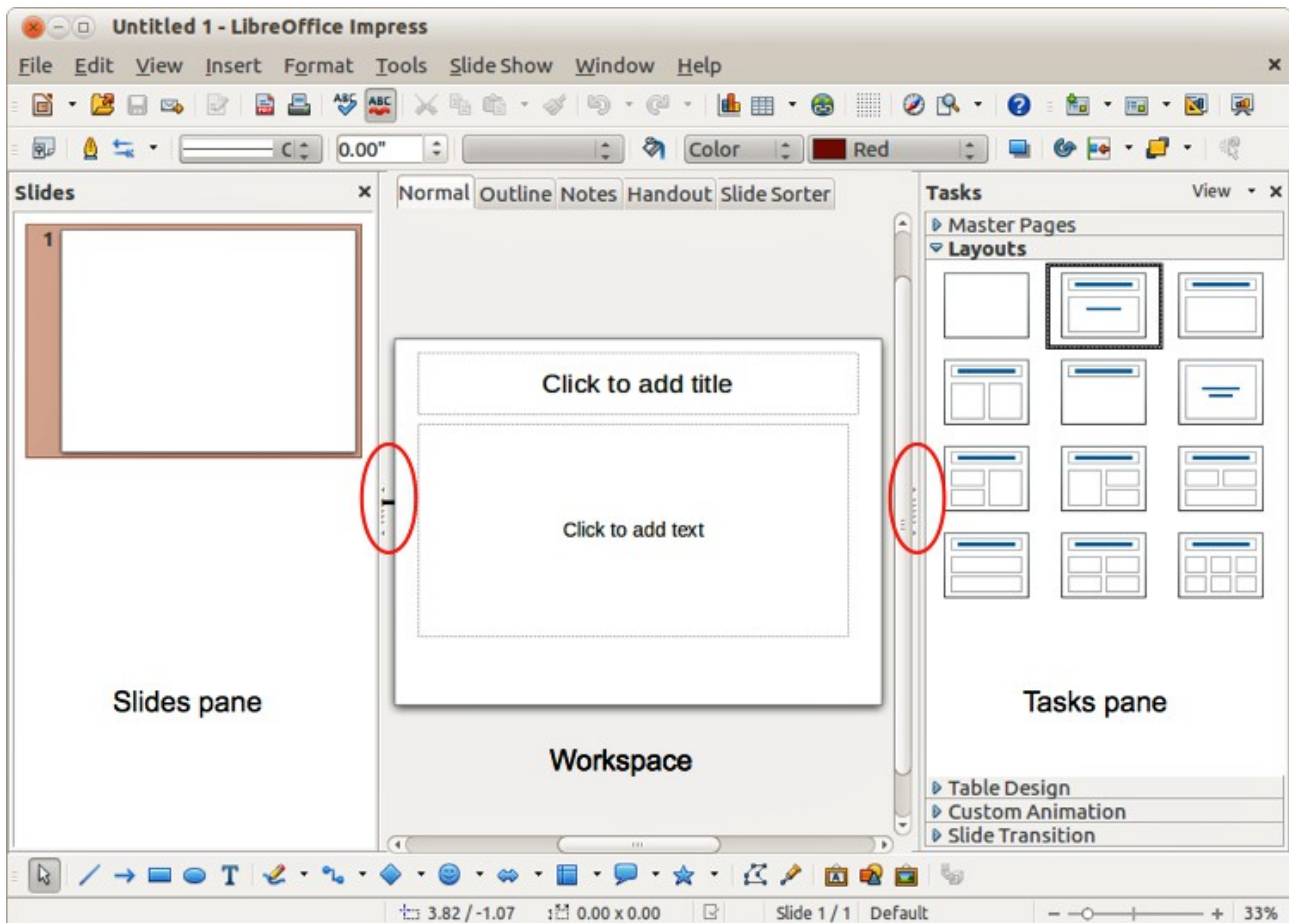


Figure 1: Main window of Impress; ovals indicate the Hide/Show markers

Tip

You can close the *Slides pane* or the *Tasks pane* by clicking the X in the upper right corner of the pane or by choosing **View > Slide Pane** or **View > Tasks Pane** to deselect the pane. To reopen a pane, choose **View > Slide Pane** or **View > Tasks Pane** again.

You can also maximize the Workspace area by clicking on the Hide/Show marker in the middle of the vertical separator line (indicated by ovals in Figure 1). Using the Hide/Show marker hides, but does not close, the Slides and Tasks panes. To restore the pane, click again on its Hide/Show marker.

Slides pane

The Slides pane contains thumbnail pictures of the slides in your presentation, in the order the slides will be shown, unless you change the slide show order that is described in *Chapter 9 Slide Shows*. Clicking a slide in this pane selects it and places it in the Workspace. When a slide is in the Workspace, you can make any changes you like.

Several additional operations can be performed on one or more slides simultaneously in the Slides pane:

- Add new slides to the presentation.
- Mark a slide as hidden so that it will not be shown as part of the presentation.
- Delete a slide from the presentation if it is no longer needed.
- Rename a slide.
- Duplicate a slide (copy and paste) or move it to a different position in the presentation (cut and paste).

It is also possible to perform the following operations, although there are more efficient methods than using the Slides pane, as you will see later in this chapter:

- Change the slide transition following the selected slide or after each slide in a group of slides.
- Change the sequence of slides in the presentation.
- Change the slide design.
- Change slide layout for a group of slides simultaneously.

Tasks pane

The Tasks pane has five sections. To expand the section you wish to use, click on the title bar of each section. Only one section at a time can be expanded.

Master Pages

Here you define the page (slide) style for your presentation. Impress includes several designs of Master Pages (slide masters). One of them, Default, is blank, and the rest have background and styled text.

Tip

Press *F11* to open the Styles and Formatting window, where you can modify the styles used in any master page to suit your purposes. This can be done at any time. See *Chapter 2 Using Slide Masters, Styles, and Templates* for more information.

Layouts

The layouts included in Impress are shown here. You can choose the one you want and use it as it is, or you can modify it to meet your own requirements. However, it is not possible to save custom layouts.

Table Design

The standard table styles are provided in this section. You can further modify the appearance of a table with the options to show or hide specific rows and columns, or to apply a banded appearance to the rows and columns. Refer to *Chapter 3 Adding and Formatting Text* for details on how to work with tables.

Custom Animation

A variety of animations can be used to emphasize or enhance different elements of each slide. The Custom Animation section provides an easy way to add, change, or remove animations. See *Chapter 9 Slide Shows* for an overview of how to add and customize animations.

Slide Transition

The Slide Transition section provides access to a number of slide transition options. The default is set to *No Transition*, in which the following slide simply replaces the existing one. However, many additional transitions are available. You can also specify the transition speed (slow,

medium, fast), choose between an automatic or manual transition, and choose how long the selected slide should be shown (automatic transition only).

Workspace

The Workspace (normally in the center) has five tabs: **Normal**, **Outline**, **Notes**, **Handout**, and **Slide Sorter** (Figure 2). These five tabs are called View buttons. The Workspace below the View buttons changes depending on the chosen view. The workspace views are described in detail on page Error: Reference source not found.

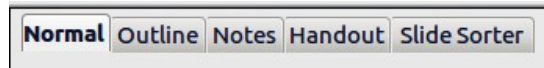


Figure 2: Workspace tabs

Toolbars

Many toolbars can be used during slide creation; they can be displayed or hidden by going to **View > Toolbars** on the main menu bar and selecting from the context menu.

You can also select the icons that you wish to appear on each toolbar. For more information, refer to *Chapter 11 Setting Up and Customizing Impress*.

Many of the toolbars in Impress are similar to the toolbars in Draw. Refer to the *Draw Guide* for details on the functions available and how to use them.

Status bar

The status bar, located at the bottom of the Impress window, contains information that you may find useful when working on a presentation. You can hide the Status Bar by going to **View** on the main menu bar and deselecting **Status Bar** in the context menu.

Note	The sizes are given in the current measurement unit (not to be confused with the ruler units). This unit is defined in Tools > Options > LibreOffice Impress > General .
-------------	--

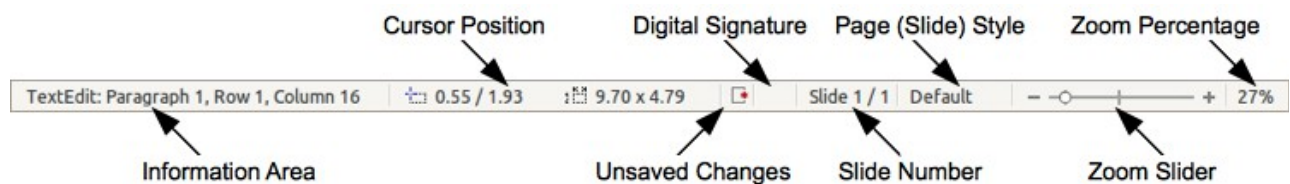


Figure 3: Status bar

From left to right, you will find:


- **Information area** – changes depending on the selection. For example:

Example selection	Examples of information shown
Text area	Text Edit: Paragraph x, Row y, Column z
Charts, spreadsheets	Embedded object (OLE) "ObjectName" selected
Graphics	Bitmap with transparency selected

- **Cursor position** – the position of the cursor or of the top left corner of the selection measured from the top left corner of the slide, followed by the width and height of the selection or text box where the cursor is located.

- **Unsaved changes** – a flag indicating that the file needs saving. Double clicking on this flag opens the file save dialog.
- **Digital signature** – a flag indicating whether the document is digitally signed. After the file has been saved, double clicking on this flag opens the digital signatures dialog.
- **Slide number** – the slide number currently displayed in the Workspace and the total number of slides in the presentation.
- **Page (slide) style** – the style associated with the slide, handout, or notes page currently in the Workspace. Double clicking on the style name opens the slide design dialog.
- **Zoom slider** – adjusts the zoom percentage of the Workspace displayed.
- **Zoom percentage** – indicates the zoom percentage of the Workspace displayed. Double clicking on zoom percentage opens the zoom and layout dialog.

Navigator

The Navigator displays all objects contained in a document. It provides another convenient way to move around a document and find items in it. To open the Navigator dialog, click the **Navigator** icon  on the Standard toolbar, or go to **View > Navigator** on the main menu bar, or use the keyboard shortcut *Ctrl+Shift+F5*.

The Navigator is more useful if you give your slides and objects (pictures, spreadsheets, and so on) meaningful names, instead of leaving them with default names, for example “Slide 1” and “Shape 1”.

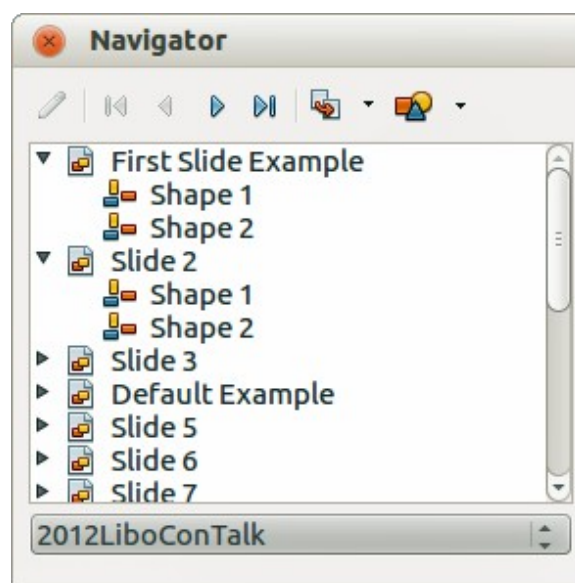


Figure 4: Navigator dialog

Workspace views

Each of the Workspace views is designed to ease the completion of certain tasks; it is therefore useful to familiarize yourself with them to quickly accomplish those tasks.

Note

Each Workspace view displays a different set of toolbars when selected. These toolbar sets can be customized by going to **View > Toolbars**, then check or uncheck the toolbar you want to add or remove.

Normal view

Normal view is the main view for creating individual slides. Use this view to format and design slides and to add text, graphics, and animation effects.

To place a slide in the slide design area of the Normal view (Figure 1 on page 5), either click the slide thumbnail in the Slides pane or double-click it in the Navigator (page 8).

Outline view

Outline view (Figure 5) contains all of the slides of the presentation in their numbered sequence. It shows topic titles, bulleted lists, and numbered lists for each slide in outline format. Only the text contained in the default text boxes in each slide is shown. If you have added text boxes or graphic objects to the slides, then these objects are not displayed. Slide names are not included.

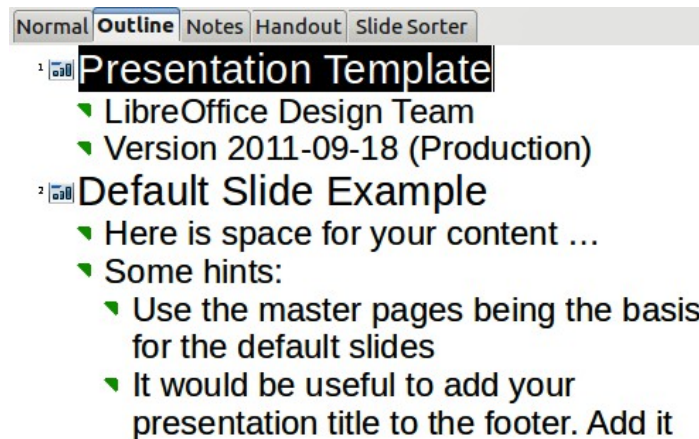


Figure 5: Outline view

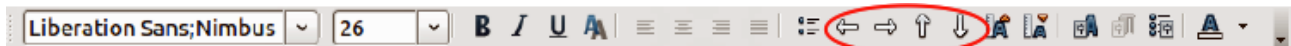


Figure 6: Outline level and movement arrows in Text Formatting toolbar

Use Outline view for:

- 1) Making changes in the text of a slide:
 - a) Add or delete text in a slide just as in the Normal view.
 - b) Move the paragraphs of text in the selected slide up or down by using the up and down arrow buttons (Move Up or Move Down) on the Text Formatting toolbar (highlighted in Figure 6).
 - c) Change the outline level for any of the paragraphs in a slide using the left and right arrow buttons (Promote or Demote) on the Text Formatting toolbar.
 - d) Simultaneously move a paragraph and change its outline level using a combination of these four arrow buttons.
- 2) Comparing the slides with your outline (if you have prepared one in advance). If you notice from your outline that another slide is needed, you can create it directly in the Outline view, or you can return to the Normal view to create it.

Notes view

Use the Notes view (Figure 7) to add notes to a slide. These notes are not seen when the presentation is shown to an audience on an extra display monitor connected to your computer.

- 1) Click the **Notes** tab in the Workspace.

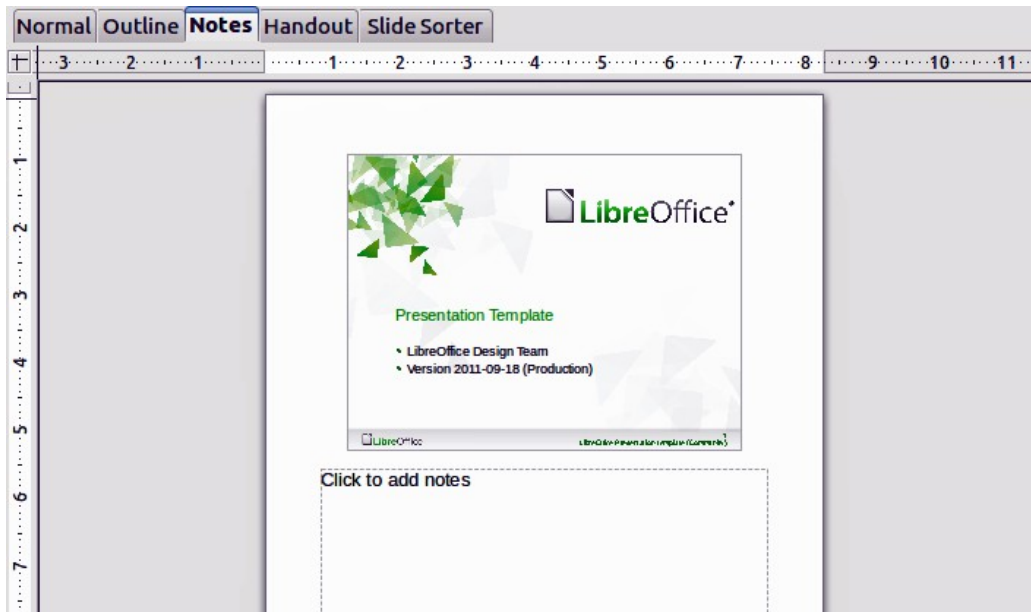


Figure 7: Adding notes in Notes view

- 2) Select the slide to which you want to add notes.
- 3) Click the slide in the Slide pane, or double-click the slide name in the Navigator.
- 4) In the text box below the slide, click on the words *Click to add notes* and begin typing.

You can resize the Notes text box using the resizing handles which appear when you click on the edge of the box. You can also move the box by placing the pointer on the border, then clicking and dragging. To make changes in the text style, press the *F11* key to open the Styles and Formatting dialog.

Handout view

Handout view is for setting up the layout of your slide for a printed handout. Click the *Handout* tab in the Workspace, then select **Layouts** in the Tasks pane (Figure 8). You can then choose to print 1, 2, 3, 4, 6, or 9 slides per page.

You can also use this view to customize the information printed on the handout. Refer to *Chapter 8 Adding and Formatting Slides, Notes, and Handouts* for more information.

Select from the main menu **Insert > Page Number** or **Insert > Date and Time** and the **Header and Footer** dialog opens. Click on the *Notes and Handouts* tab (Figure 9) and use this dialog to select the elements you want to appear on each handout page and their contents.

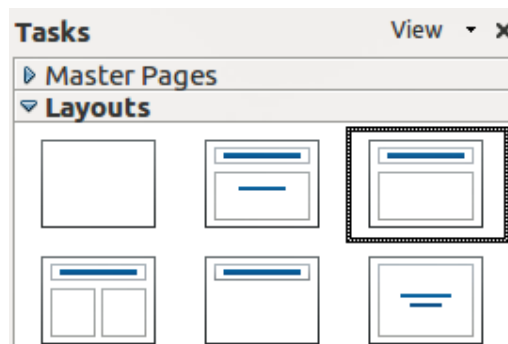


Figure 8: Handout layouts

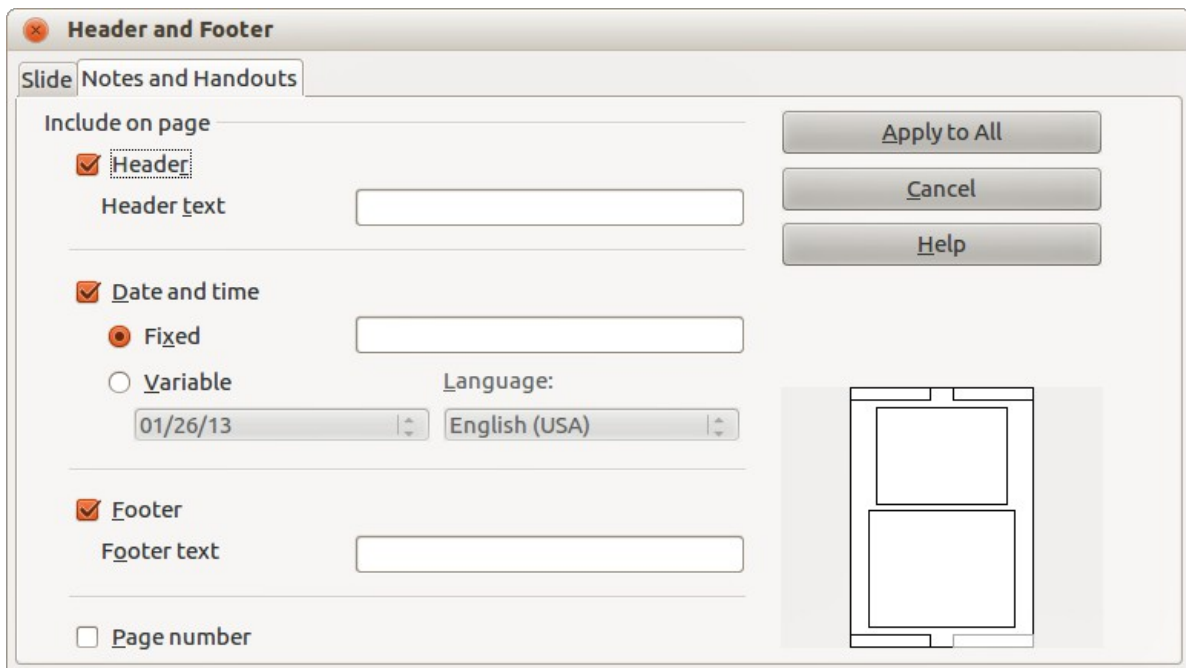


Figure 9: Header and Footer dialog – Notes and Handouts page



Figure 10: Slide Sorter view

Slide Sorter view

The Slide Sorter view (Figure 10) contains all of the slide thumbnails. Use this view to work with a group of slides or with only one slide.

Customizing Slide Sorter view

To change the number of slides per row:

- 1) Check **View > Toolbars > Slide Sorter** and **Slide View** to show or hide the slide sorter and view toolbars (Figure 11).
- 2) Adjust the number of slides (up to a maximum of 15).



Figure 11: Slide Sorter and Slide View toolbars

Moving a slide using Slide Sorter

To move a slide in a presentation using the Slide Sorter:

- 1) Click the slide to highlight it (Figure 10).
- 2) Drag and drop it to the location you want.

Selecting and moving groups of slides

To select a group of slides, use one of these methods:

- Using the *Ctrl* key – click on the first slide and, while pressing the *Ctrl* key, select the other desired slides.
- Using the *Shift* key – click on the first slide, and while pressing the *Shift* key, select the final slide in the group. This selects all of the other slides between the first and the last slide selected.
- Using the mouse – click slightly to one side (left or right) of the first slide to be selected. Hold down the left mouse button and drag the cursor until all of the slides you want selected are highlighted.

To move a group of slides:

- 1) Select a group of slides.
- 2) Drag and drop the group to their new location.

Working in Slide Sorter view

You can work with slides in the Slide Sorter view just as you can in the Slide pane. To make changes, right-click a slide and choose any of the following from the context menu:

- **New Slide** – adds a new slide after the selected slide.
- **Duplicate Slide** – creates a duplicate of the selected slide and places the new slide immediately after the selected slide.
- **Delete Slide** – deletes the selected slide.
- **Rename Slide** – allows you to rename the selected slide.
- **Slide Layout** – allows you to change the layout of the selected slide.
- **Slide Transition** – allows you to change the transition of the selected slide.
 - For one slide, select a slide and add the desired transition.
 - For more than one slide, select a group of slides and add the desired transition.
- **Hide Slide** – any slides that are hidden are not shown in the slide show.
- **Cut** – removes the selected slide and saves it to the clipboard.
- **Copy** – copies the selected slide to the clipboard without removing it.
- **Paste** – inserts a slide from the clipboard after the selected slide.

Creating a new presentation

This section shows you how to create a new presentation using the Presentation Wizard.

Tip

The first thing to do is decide on the purpose of the presentation and plan the presentation. Although you can make changes as you go, having an idea of who the audience will be, the structure, the content, and how the presentation will be delivered, will save you a lot of time from the start.

When you start Impress, the Presentation Wizard (Figure 12) appears.

- 1) Under **Type**, choose one of the options:
 - *Empty presentation* creates a blank presentation.
 - *From template* uses a template design already created as the basis for a new presentation. The wizard changes to show a list of available templates. Choose the template you want. More details can be found in *Chapter 2, Using Slide Masters, Styles, and Templates*.
 - *Open existing presentation* continues work on a previously created presentation. The wizard changes to show a list of existing presentations. Choose the one you want.

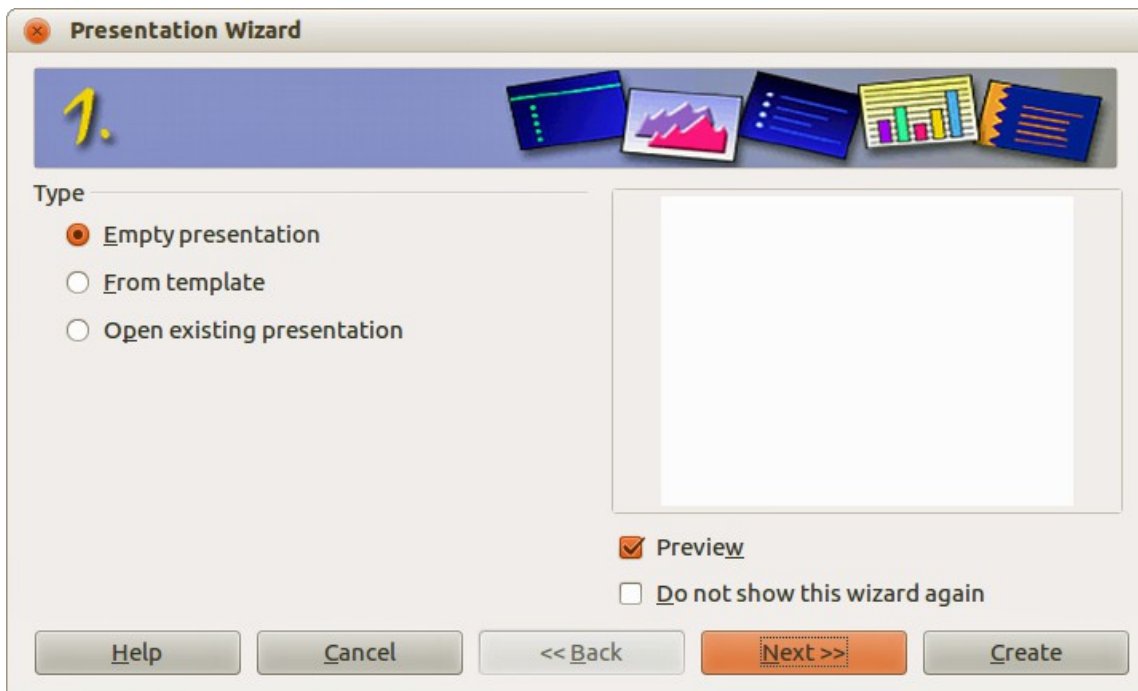


Figure 12: Choosing the type of presentation

- 2) Click **Next** and the Presentation Wizard step 2 opens. It appears as shown in Figure 13 if you selected *Empty presentation* at step 1. If you selected *From template*, an example slide is shown in the Preview box.
- 3) Choose a design under **Select a slide design**. The slide design section gives *Presentation Backgrounds* with a list of choices for slide designs. If you want to use one of these other than <Original>, click it to select it.
- 4) Select how the presentation will be used under **Select an output medium**. Most often, presentations are created for computer screen display, so you would select **Screen**. You can change the page format at any time.

Note

- 5) The default Screen page is for a 4:3 display (28cm x 21cm) which is not suitable for modern wide-screen displays. You can change the slide size at any time by switching to Normal view and selecting **Format > Page**.

- 6) Click Next and the Presentation Wizard step 3 (Figure 14) opens.

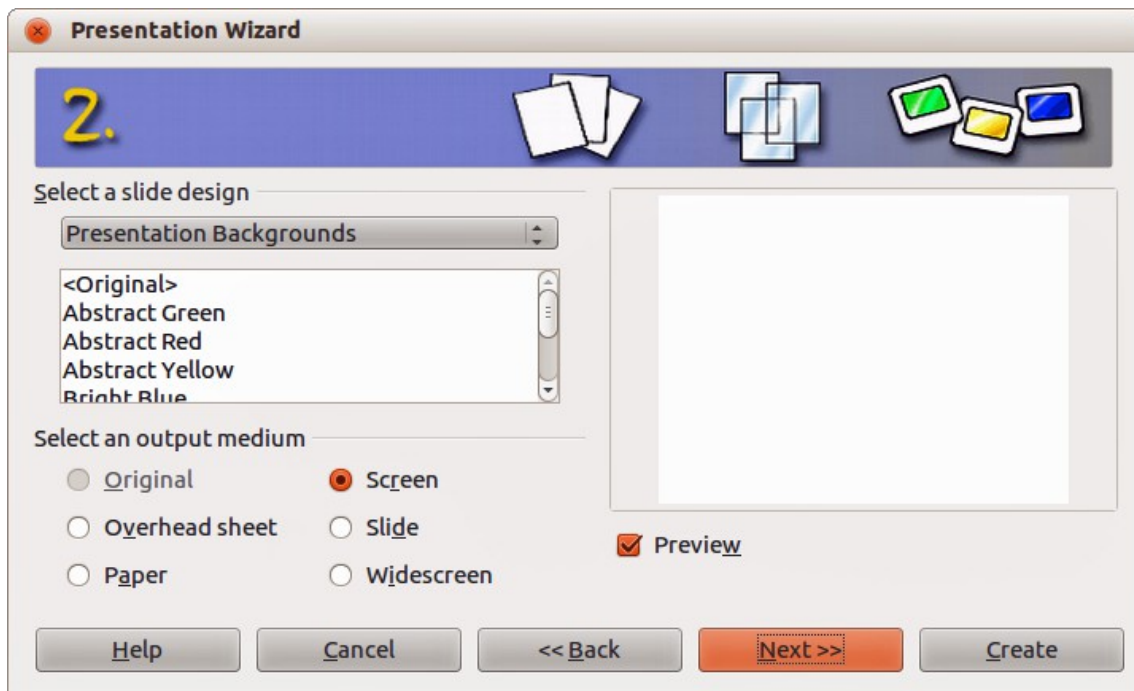


Figure 13: Selecting a slide design

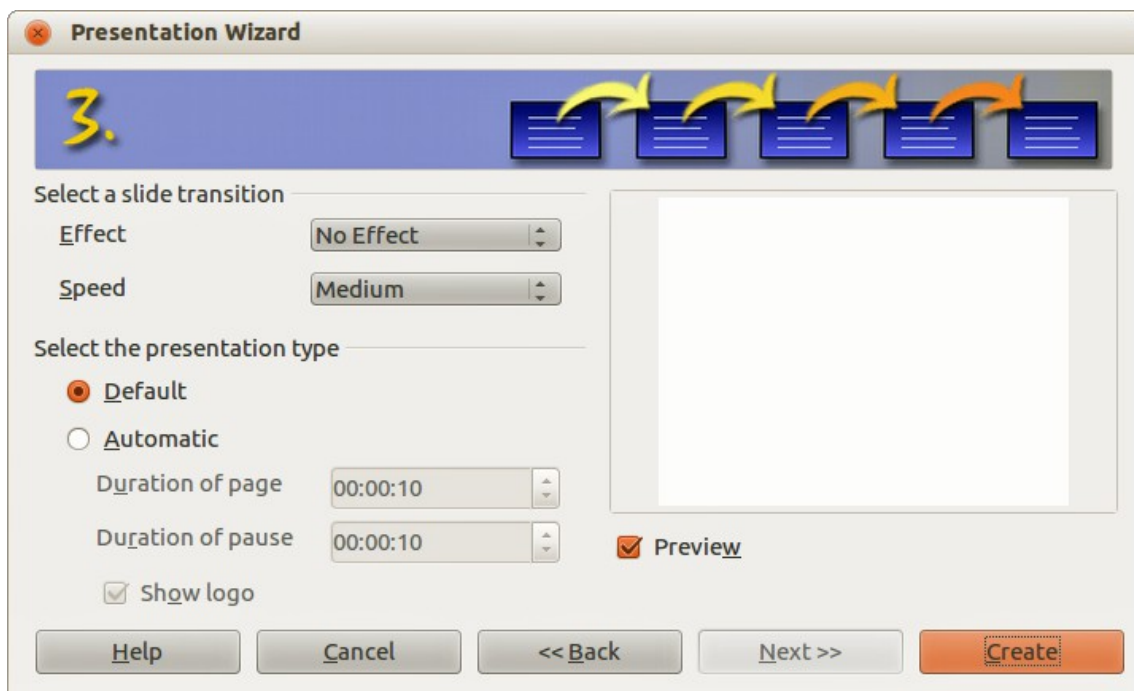


Figure 14: Selecting a slide transition effect

- 7) Select the desired slide transition from the *Effect* drop-down menu.
- 8) Select the desired speed for the transition between the different slides in the presentation from the **Speed** drop-down menu. *Medium* is a good choice for now.
- 9) Select the presentation type – *Default* or *Automatic*.
 - a) Choosing *Default* displays the presentation as a full screen presentation with the specified speed you selected from the Speed drop down list.
 - b) Choosing *Automatic* will allow you to set the duration the slide is displayed and the duration of the pause between the end and restart of the presentation.
- 10) Click **Create** and your new presentation is created.

Tip

You can accept the default values for both *Effect* and *Speed* unless you are skilled at creating presentations. Both of these values can be changed later while working with **Slide transitions** and **animations**. These two features are explained in more detail in *Chapter 9 Slide Shows*.

Note

If you selected *From template* on step 1 of the Wizard, the **Next** button will be active on step 3 and other pages will be available. These pages are not described here.

Caution



Remember to save frequently while working on the presentation, to prevent any loss of information should something unexpected occur. You might also want to activate the AutoRecovery function (**Tools > Options > Load/Save > General**). Make sure **Save AutoRecovery information every** is selected and that you have entered a recovery frequency.


Formatting a presentation

A new presentation only contains one empty slide. In this section we will start adding new slides and preparing them for the intended contents.

Inserting slides

New slide

A new slide can be inserted into a presentation as follows:

- 1) Go to **Insert** on the main menu bar and select **Slide**.
- 2) Or right-click on a slide in the Workspace, Slides Pane or Slide Sorter view and select **Slide > New Slide** from the context menu.
- 3) Or click the **Slide** icon  in the Presentation toolbar. If the Presentation toolbar (Figure 15) is not visible, go to **View > Toolbars** on the main menu bar and select **Presentation** from the list.
- 4) A new slide is inserted after the selected slide in the presentation.

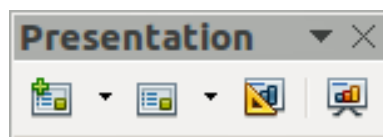


Figure 15: Presentation toolbar

Duplicate slide

Sometimes, rather than starting from a new slide you may want to duplicate a slide already included in your presentation. To duplicate a slide:

- 1) Select the slide you want to duplicate from the Slides Pane.
- 2) Right click on the slide in the Slides Pane or Workspace and select **Duplicate Slide** from the context menu.
- 3) Or, go to Slide Sorter view, right click on a slide and select **Duplicate Slide** from the context menu.

- 4) Alternatively, go to **Insert** on the main menu bar and select **Duplicate Slide**.
- 5) A duplicate slide is inserted after the selected slide in the presentation.

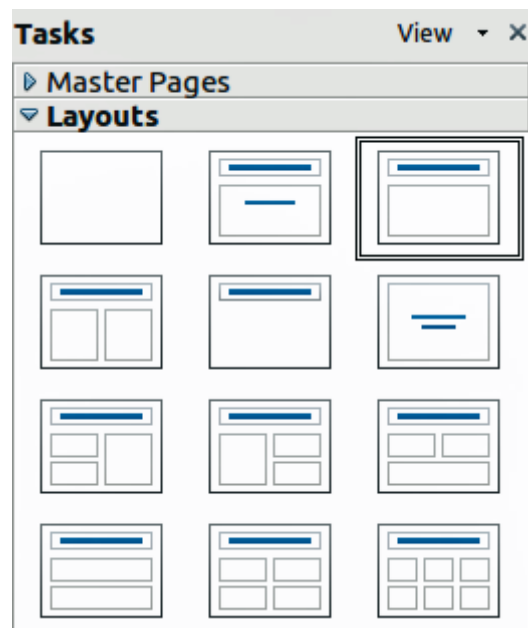


Figure 16: Available slide layouts

Selecting a slide layout

In the Tasks pane, select the Layouts drawer to display the available layouts (Figure 16). The Layouts differ in the number of elements a slide will contain, from a blank slide to a slide with six contents boxes and a title.

The first slide in a presentation is normally a title slide. The *Title Slide* (which also contains a section for a subtitle) or *Title Only* are suitable layouts for the first slide, while for most of the remaining slides you will probably use the *Title, Contents* layout.

Selecting layout

Assuming that the *Blank Slide* layout was not selected:

- 1) Click on *Click to add title* and then type the title text. To adjust the formatting of the title, modify the *Title* presentation style; see *Chapter 2 Using Slide Masters, Styles, and Templates* for instructions.
- 2) If you are using the *Title Slide* layout, click on *Click to add text* to add a subtitle. To adjust the formatting of the subtitle, modify the *Subtitle* presentation style; see *Chapter 2 Using Slide Masters, Styles, and Templates* for instructions.

Note

Text and graphic elements can be readjusted at any time during the preparation of the presentation, but changing the layout of a slide that already contains some contents can have a dramatic effect. It is therefore recommended that you pay particular attention to the layout you select. If you do need to change the layout after contents have been added, the contents are not lost though they may need to be reformatted.

Tip

To view the names for the included layouts, use the Tooltip feature: position the cursor on an icon in the Layout section (or on any toolbar icon) and its name will be displayed in a small rectangle.

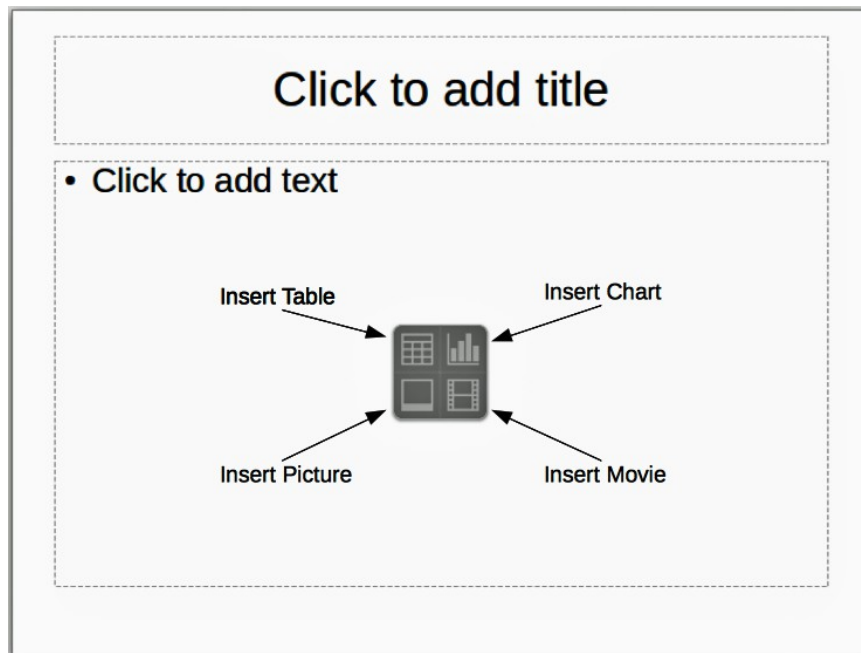


Figure 17: Selecting contents type

Changing layout

To select or change the layout:

- 1) Place the slide in the work area and select the desired layout from the layout drawer in the Task Pane. Several layouts contain one or more content boxes. Each of these boxes can be configured to contain one of the following elements: Text, Movie, Picture, Chart or Table.
- 2) Select the type of contents by clicking on the icon that is displayed in the middle of the contents box as shown in Figure 17.
- 3) If instead you intend to use the contents box for text, just click on the *Click to add text* and type your text.

Note

If you have selected a layout with one or more contents boxes, this is a good time to decide what type of contents you want to insert.

Modifying slide elements

A slide contains elements that were included in the slide master, as well those elements included in the selected slide layout. However, it is unlikely that the predefined layouts will suit all your needs for your presentation. You may want to remove elements that are not required or insert objects such as text and graphics.

Although Impress does not have the functionality to create new layouts, it allows you to resize and move the layout elements. It is also possible to add slide elements without being limited to the size and position of the layout boxes.

To resize a contents box, click on the outer frame so that the 8 resizing handles are displayed. To move it place the mouse cursor on the frame so that the cursor changes shape. You can now click the left mouse button and drag the contents box to its new position on the slide.

To remove any unwanted elements, do this:

- 1) Click the element to highlight it. The resizing handles show it is highlighted.
- 2) Press the *Delete* key to remove it.

Caution



Changes to any of the layouts included in Impress can only be made using **View > Normal**, which is the default. Attempting any changes by modifying a slide master, although possible, may result in unpredictable results and requires extra care as well as a certain amount of trial and error.

Adding text

To add text to a slide that contains a text frame, click on *Click to add text* in the text frame and then type your text. The Outline styles are automatically applied to the text as you insert it. You can change the outline level of each paragraph as well as its position within the text by using the arrow buttons on the *Text Formatting* toolbar (see Figure 5 and “Outline view” on page 9). For more information on text, see *Chapter 3 Adding and Formatting Text*.

Adding objects

To add any pictures or objects to a slide, for example a picture, clipart, drawing, photograph, or spreadsheet, click on **Insert** then select from the drop down menu what type of insert you require. For more information, see the following chapters:

- For pictures, see *Chapter 4 Adding and Formatting Pictures*.
- For graphic objects, see *Chapter 5 Managing Graphic Objects* and *Chapter 6 Formatting Graphic Objects*.
- For OLE and other objects, see *Chapter 7 Including Spreadsheets, Charts, and Other Objects*.

Modifying slide appearance

To change the background and other characteristics of all slides in the presentation, you need to modify the master page or choose a different master page.

A *Slide Master* is a slide with a specified set of characteristics that acts as a template and is used as the starting point for creating other slides. These characteristics include the background, objects in the background, formatting of any text used, and any background graphics.

Note

LibreOffice uses three interchangeable terms for this one concept. *Master slide*, *slide master*, and *master page*. These terms all refer to a slide that is used to create other slides. This user guide, however, uses only the term *slide master*, except when describing the user interface.

Impress has included a range of slide masters, found in the **Master Pages** section of the Tasks pane. You can also create and save additional slide masters or add more from other sources. See *Chapter 2 Using Slide Masters, Styles, and Templates* for information on creating and modifying slide masters.

If all you need to do is to change the background, you can use a shortcut:

- 1) Select **Format > Page** and go to the *Background* tab on the **Page Setup** dialog that opens.
- 2) Select the desired background between solid color, gradient, hatching and bitmap.
- 3) Click **OK** to apply it.

A dialog box opens, asking if the background should be applied to all the slides. If you click **Yes**, Impress automatically modifies the master page for you.

Note

Inserting and correctly formatting a background is beyond the scope of this chapter, but you can find all the information you need in the *Chapter 6 Formatting Graphic Objects* and the *Draw Guide Chapter 4 Changing Object Attributes*.

Modifying a slide show

By default the slide show will display all the slides in the same order as they appear in the slide sorter, using any transition between slides specified in the Presentation Wizard, and you need some keyboard or mouse interaction to move from one slide to the next.

Now is a good time to review the entire presentation and answer some questions. Run the slide show at least once (see “Running a slide show” on page 20) before answering them. You might want to add some questions of your own.

- 1) Are the slides in the correct order? If not, some of them will need to be moved.
- 2) Is the information well spaced and visible to members of an audience at the back of a large room? They may not be able to see information at the bottom of a slide, so you may need to design your presentation to fit the top three-quarters of the screen.
- 3) Would an additional slide make a particular point clearer? If so, another slide needs to be created.
- 4) Do some of the slides seem unnecessary? Hide or delete them.
- 5) Would custom animations help some of the slides? (Advanced technique.)
- 6) Should some of the slides have a different slide transition than others? The transition of those slides should be changed.

Tip

If one or more slides seem to be unnecessary, hide the slide or slides, and view the slide show a few more times to make sure they are not needed. To hide a slide, right-click the slide in the Slides pane and select **Hide Slide** from the context menu. Do not delete a slide until you have done this; otherwise you may have to create that slide again.

Once you have answered these and your own questions, make the necessary changes. This is done most easily in the Slide Sorter view (see “Slide Sorter view” page 11). Use the Slide Show menu to change the order of the slides, choose which ones are shown, automate moving from one slide to the next, and other settings. To change the slide transition, animate slides, and make other enhancements, use the various selections in the Task pane.

Custom animations

If you wish to add a custom animation to a slide, do it now. Custom animations are found in the **Custom Animation** section of the Tasks pane. This is an advanced technique and is explained in *Chapter 9 Slide Shows*.

Slide transitions


Your first slide show will probably have the same slide transition for all slides. Setting *Advance slide* to **On mouse click** is the default. If you want each slide to be shown for a specific amount of time, click **Automatically after** and enter the number of seconds. Click **Apply to all slides**.

Transition choices are found under **Slide Transition** on the Tasks pane. For more information about slide transitions see *Chapter 9 Slide Shows*.

Tip

The Slide Transition section has a very useful option: *Automatic preview*. With this option selected, when you make any changes in a slide transition, the new slide is previewed in the Slide Design area, including its transition effect.

Running a slide show

- 1) To run the slide show, do one of the following:
 - a) Click **Slide Show > Slide Show** on the main menu bar.
 - b) Click the **Slide Show** icon  on the Presentation toolbar or the Slide Sorter toolbar.
 - c) Press *F5* or *F9*. (*F9* does not work on a Mac.)
- 2) If the slide transition is *Automatically after x seconds*, let the slide show run by itself.
- 3) If the slide transition is *On mouse click*, do one of the following to move from one slide to the next.
 - Click the mouse button to advance to the next slide.
 - Use the arrow keys on the keyboard to go to the next slide or to go back to the previous one.
 - Press the *Spacebar* on the keyboard to advance to the next slide.
- 4) Right-click anywhere on the screen to open a menu from which you can navigate the slides and set other options.
- 5) When you advance past the last slide, the message *Click to exit presentation...* appears. Click the mouse or press any key to exit the presentation.
- 6) To exit the slide show at any time including at the end, press the *Esc* key.

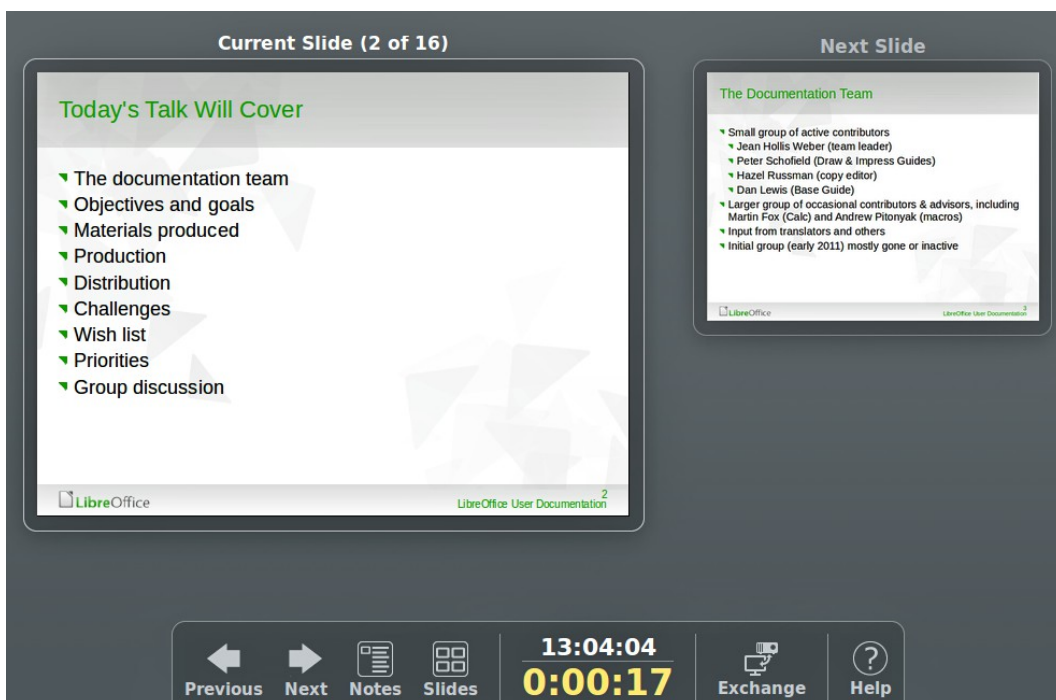


Figure 18: Impress Presenter Console

Using the Presenter Console

LibreOffice Impress has a Presenter Console function that can be used when an extra display for presentation has been connected your computer. The Presenter Console (Figure 18) provides extra control over slide shows by using different views on your computer display and on the display that the audience sees. The view you see on your computer display includes the current slide, the upcoming slide, any slide notes, and a presentation timer.

For more information and details about using the Presenter Console, see the *Chapter 9 Slide Shows*.