



**LibreOffice**  
The Document Foundation

## Calc Guide

# *Chapter 1* *Introducing Calc*

*Using Spreadsheets in LibreOffice*

## Copyright

---

This document is Copyright © 2005–2012 by its contributors as listed below. You may distribute it and/or modify it under the terms of either the GNU General Public License (<http://www.gnu.org/licenses/gpl.html>), version 3 or later, or the Creative Commons Attribution License (<http://creativecommons.org/licenses/by/3.0/>), version 3.0 or later.

All trademarks within this guide belong to their legitimate owners.

## Contributors

Barbara Duprey  
Gabriel Godoy  
Jean Hollis Weber  
John A Smith

## Feedback

Please direct any comments or suggestions about this document to:  
[documentation@global.libreoffice.org](mailto:documentation@global.libreoffice.org)

## Acknowledgments

This chapter is based on Chapter 1 of the *OpenOffice.org 3.3 Calc Guide*. The contributors to that chapter are:

Rick Barnes	Nicole Cairns	Peter Kupfer
Jean Hollis Weber	Krishna Aradhi	Andy Brown
Alexandre Martins	Anthony Petrillo	Gary Schnabl
Barbara M Tobias		

## Publication date and software version

Published 17 July 2012. Based on LibreOffice 3.4.6.

## Note for Mac users

---

Some keystrokes and menu items are different on a Mac from those used in Windows and Linux. The table below gives some common substitutions for the instructions in this chapter. For a more detailed list, see the application Help.

<i>Windows or Linux</i>	<i>Mac equivalent</i>	<i>Effect</i>
<b>Tools &gt; Options</b> menu selection	<b>LibreOffice &gt; Preferences</b>	Access setup options
<i>Right-click</i>	<i>Control+click</i>	Opens a context menu
<i>Ctrl (Control)</i>	⌘ ( <i>Command</i> )	Used with other keys
<i>F5</i>	<i>Shift+⌘+F5</i>	Opens the Navigator
<i>F11</i>	<i>⌘+T</i>	Opens the Styles and Formatting window

# Contents

---

<b>Copyright</b> .....	<b>2</b>
<b>Note for Mac users</b> .....	<b>2</b>
<b>What is Calc?</b> .....	<b>5</b>
<b>Spreadsheets, sheets, and cells</b> .....	<b>5</b>
<b>Parts of the main Calc window</b> .....	<b>5</b>
Title bar.....	5
Menu bar.....	6
Toolbars.....	6
Formatting toolbar.....	10
Formula Bar.....	10
Right-click (context) menus.....	11
Individual cells.....	11
Sheet tabs.....	11
Status bar.....	12
<b>Starting new spreadsheets</b> .....	<b>13</b>
Starting a new document from a template.....	14
<b>Opening existing spreadsheets</b> .....	<b>15</b>
<b>Opening CSV files</b> .....	<b>15</b>
<b>Saving spreadsheets</b> .....	<b>17</b>
Saving a document automatically.....	17
Saving as a Microsoft Excel document.....	17
Saving as a CSV file.....	18
Saving in other formats.....	19
<b>Password protection</b> .....	<b>19</b>
Protecting a spreadsheet .....	19
Changing an existing password.....	20
<b>Navigating within spreadsheets</b> .....	<b>21</b>
Going to a particular cell.....	21
Moving from cell to cell.....	21
Moving from sheet to sheet.....	23
<b>Selecting items in a sheet or spreadsheet</b> .....	<b>24</b>
Selecting cells.....	24
Selecting columns and rows.....	25
Selecting sheets.....	26
<b>Working with columns and rows</b> .....	<b>27</b>
Inserting columns and rows.....	27
Deleting columns and rows.....	27
<b>Working with sheets</b> .....	<b>28</b>
Inserting new sheets.....	28

Moving and copying sheets.....	29
Deleting sheets.....	30
Renaming sheets.....	30
<b>Viewing Calc.....</b>	<b>31</b>
Using zoom.....	31
Freezing rows and columns.....	31
Splitting the screen.....	32
<b>Using the Navigator.....</b>	<b>34</b>
Moving quickly through a document.....	35
Choosing a drag mode.....	36
<b>Using document properties.....</b>	<b>36</b>

## What is Calc?

---

Calc is the spreadsheet component of LibreOffice. You can enter data (usually numerical) in a spreadsheet and then manipulate this data to produce certain results.

Alternatively, you can enter data and then use Calc in a ‘What if...’ manner by changing some of the data and observing the results without having to retype the entire spreadsheet or sheet.

Other features provided by Calc include:

- Functions, which can be used to create formulas to perform complex calculations on data.
- Database functions, to arrange, store, and filter data.
- Dynamic charts; a wide range of 2D and 3D charts.
- Macros, for recording and executing repetitive tasks; scripting languages supported include LibreOffice Basic, Python, BeanShell, and JavaScript.
- Ability to open, edit, and save Microsoft Excel spreadsheets.
- Import and export of spreadsheets in multiple formats, including HTML, CSV, PDF, and PostScript.

### Note

If you want to use macros written in Microsoft Excel using the VBA macro code in LibreOffice, you must first edit the code in the LibreOffice Basic IDE editor. See Chapter 12, Calc Macros.

## Spreadsheets, sheets, and cells

---

Calc works with elements called *spreadsheets*. Spreadsheets consist of a number of individual *sheets*, each sheet containing cells arranged in rows and columns. A particular cell is identified by its row number and column letter.

Cells hold the individual elements—text, numbers, formulas, and so on—that make up the data to display and manipulate.

Each spreadsheet can have many sheets, and each sheet can have many individual cells. In Calc 3.4, each sheet can have a maximum of 1,048,576 rows (65,536 rows in Calc 3.2 and earlier) and a maximum of 1024 columns.

## Parts of the main Calc window

---

When Calc is started, the main window looks similar to Figure 1.

### Note

If any part of the Calc window in Figure 1 is not shown, you can display it using the View menu. For example, **View > Status Bar** will toggle (show or hide) the Status Bar. It is not always necessary to display all the parts, as shown; show or hide any of them, as desired.

### Title bar

The Title bar, located at the top, shows the name of the current spreadsheet. When the spreadsheet is newly created, its name is *Untitled X*, where *X* is a number. When you save a spreadsheet for the first time, you are prompted to enter a name of your choice.

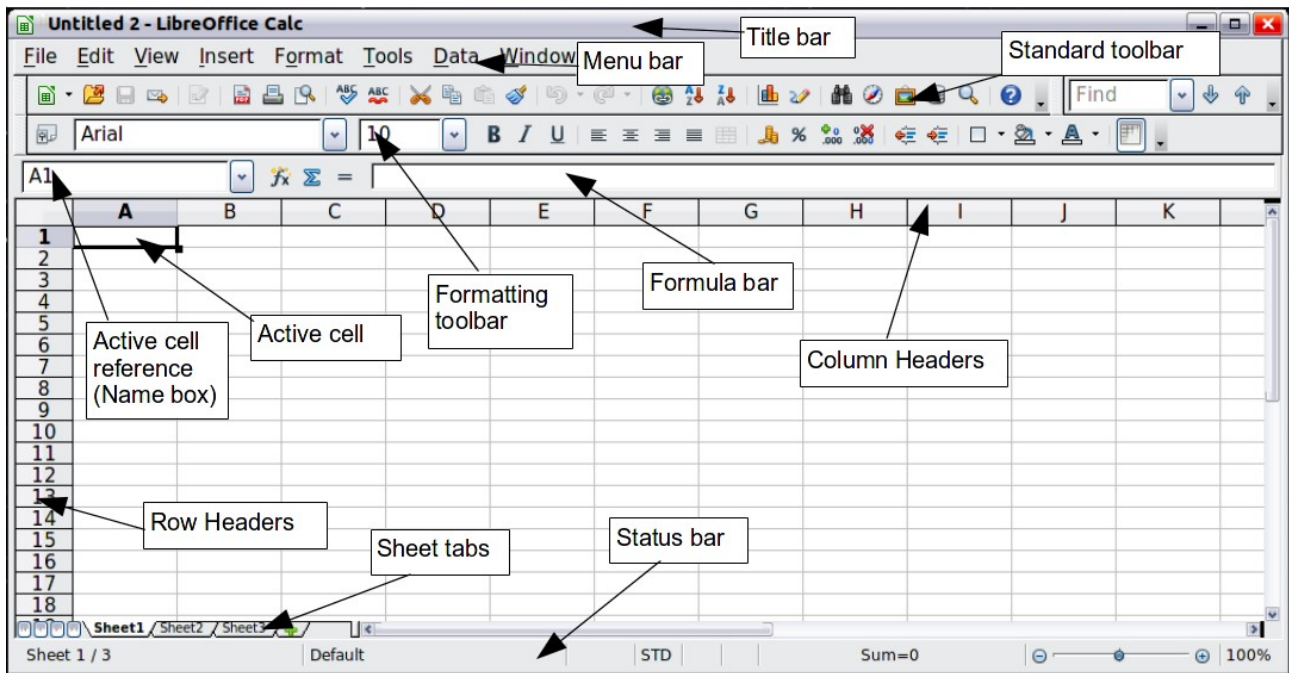


Figure 1: Parts of the Calc window

## Menu bar

Under the Title bar is the Menu bar. When you choose one of the menus, a sub-menu appears with other options. You can modify the Menu bar, as discussed in Chapter 14, Setting Up and Customizing Calc.

- **File** contains commands that apply to the entire document such as **Open**, **Save**, **Wizards**, **Export as PDF**, and **Digital Signatures**.
- **Edit** contains commands for editing the document such as **Undo**, **Changes**, **Compare Document**, and **Find and Replace**.
- **View** contains commands for modifying how the Calc user interface looks such as **Toolbars**, **Full Screen**, and **Zoom**.
- **Insert** contains commands for inserting elements such as **cells**, **rows**, **columns**, **sheets**, and **pictures** into a spreadsheet.
- **Format** contains commands for modifying the layout of a spreadsheet such as **Styles and Formatting**, **Paragraph**, and **Merge Cells**.
- **Tools** contains functions such as **Spelling**, **Word Count**, **Bibliography**, **Gallery**, and **Macros**.
- **Data** contains commands for manipulating data in your spreadsheet such as **Define Range**, **Sort**, and **Filter**.
- **Window** contains commands for the display window such as **New Window**, and **Close Window**.
- **Help** contains links to the Help file bundled with the software, **What's This?**, **Help**, and **License Information**.

## Toolbars

Calc has several types of toolbars: docked (fixed in place), floating, and tear-off. Docked toolbars can be moved to different locations or made to float, and floating toolbars can be docked.

Four toolbars are located under the Menu bar by default: the Standard toolbar, the Find toolbar, the Formatting toolbar, and the Formula Bar.

The icons (buttons) on these toolbars provide a wide range of common commands and functions. You can also modify these toolbars, as discussed in Chapter 14, Setting Up and Customizing Calc.

Placing the mouse pointer over any of the icons displays a small box, called a tooltip. It gives a brief explanation of the icon's function. For a more detailed explanation, choose **Help > What's This?** and hover the mouse pointer over the icon. To turn this feature off again, click once or press the *Esc* key twice. Tips and extended tips can be turned on or off from **Tools > Options > LibreOffice > General**.

### Displaying or hiding toolbars

To display or hide toolbars, choose **View > Toolbars**, then click on the name of a toolbar in the list. An active toolbar shows a check mark beside its name. Tear-off toolbars are not listed in the View menu.

### Palettes and tear-off toolbars

Toolbar icons with a small triangle to the right will display *palettes*, *tear-off toolbars*, and other ways of selecting things, depending on the icon.

An example of a palette is shown in Figure 2. It is displayed by clicking the small triangle to the right of the Borders toolbar icon.

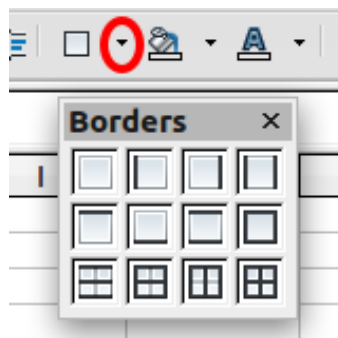


Figure 2: Toolbar palette

An example of a *tear-off toolbar* is shown in Figure 3. Tear-off toolbars can be floating or docked along an edge of the screen or in one of the existing toolbar areas. To move a floating tear-off toolbar, drag it by the title bar.

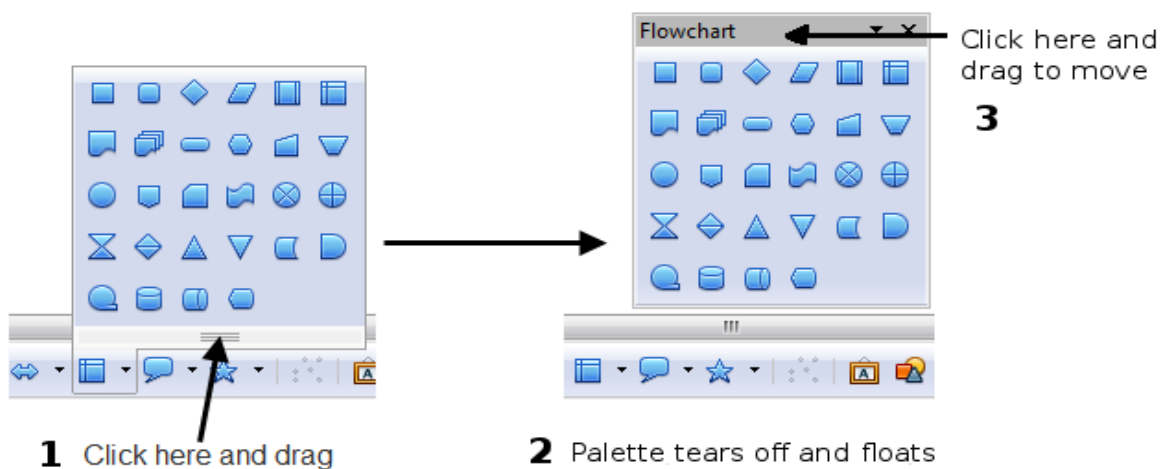


Figure 3: Example of a tear-off toolbar

## Moving toolbars

To move a docked toolbar, place the mouse pointer over the toolbar handle, hold down the left mouse button, drag the toolbar to the new location, and then release the mouse button.

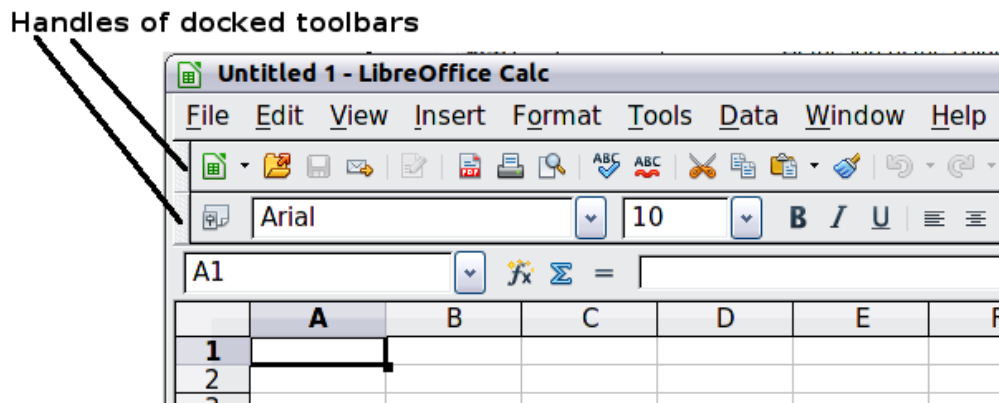


Figure 4: Moving a docked toolbar

To move a floating toolbar, click on its title bar and drag it to a new location, as shown in Figure 3.

## Docking/floating windows and toolbars

Toolbars and some windows, such as the Navigator and the Styles and Formatting window, are dockable. You can move, resize, or dock them to an edge.

To dock a window or toolbar, hold down the *Control* key and *double-click* on the frame of the floating window (or in a vacant area near the icons at the top of the floating window) to dock it in its last position.

To undock a window, hold down the *Control* key and *double-click* on the frame (or a vacant area near the icons at the top) of the docked window.

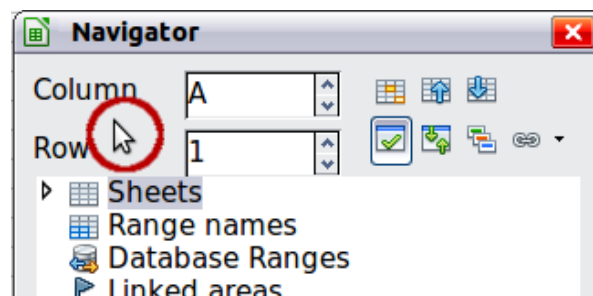


Figure 5: Control+double-click to dock or undock

On some installations, drag and drop is another alternative. To dock a window, click on the title bar of the floating window and drag to either side of the main window. A dotted frame will show the area where it will be docked. See Figure 6.



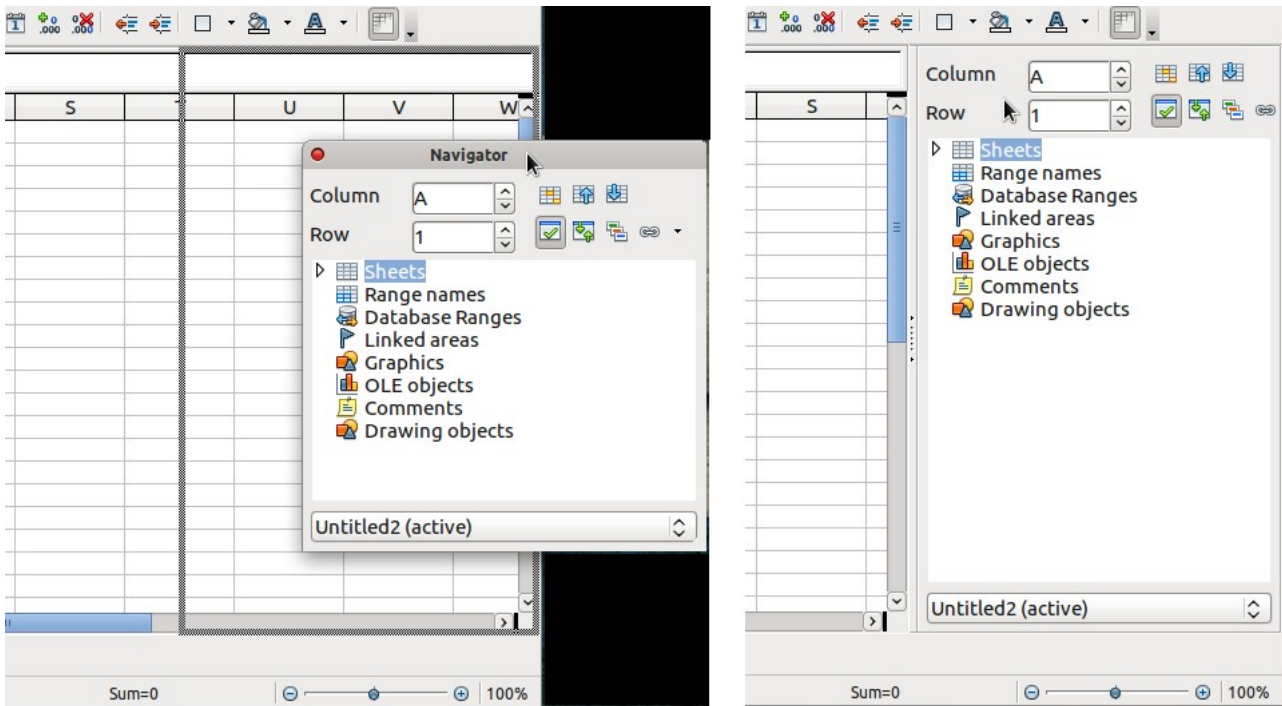


Figure 6: Drag and drop to dock a window

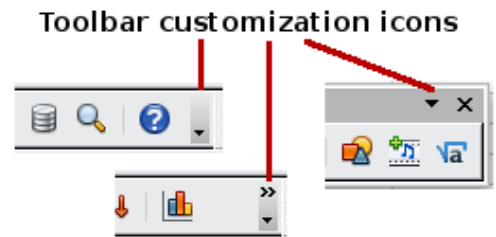
### Customizing toolbars

You can customize toolbars in several ways, including choosing which icons are visible and locking the position of a docked toolbar.

To access a toolbar's customization options, use the down-arrow at the end of the toolbar or on its title bar.

To show or hide icons defined for the selected toolbar, choose **Visible Buttons** from the drop-down menu.

Visible icons are indicated by a border around the icon (Figure 7). Click on icons to hide or show them on the toolbar.



You can also add icons and create new toolbars, as described in Chapter 16, Setting Up and Customizing Calc.

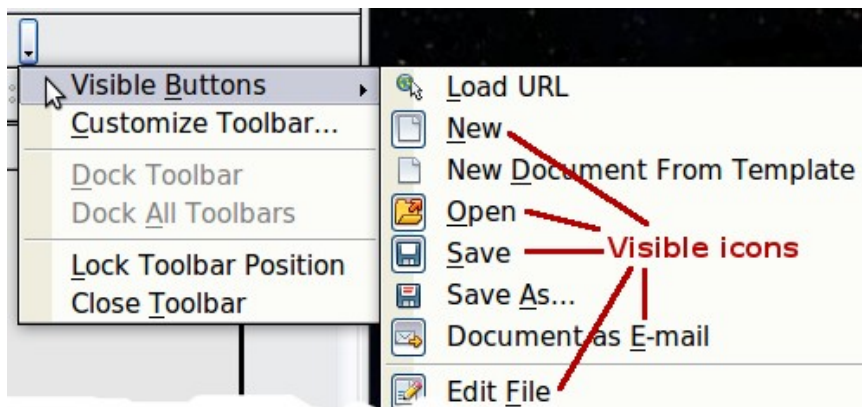


Figure 7: Selection of visible toolbar icons

## Formatting toolbar

In the Formatting toolbar, the three boxes on the left are the **Apply Style**, **Font Name**, and **Font Size** lists (see Figure 8). They show the current settings for the selected cell or area. (The Apply Style list may not be visible by default.) Click the down-arrow to the right of each box to open the list.

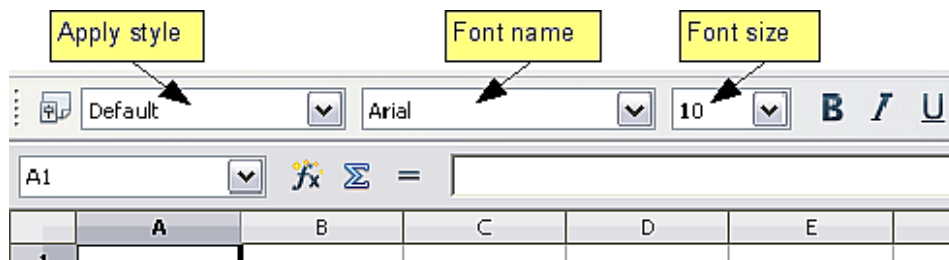


Figure 8: Apply Style, Font Name and Font Size lists

### Note

If any of the icons (buttons) in Figure 8 is not shown, you can display it by clicking the small triangle at the right end of the **Formatting** toolbar, selecting **Visible Buttons** in the drop-down menu, and selecting the desired icon (for example, **Apply Style**) in the drop-down list. It is not always necessary to display all the toolbar buttons, as shown; show or hide any of them, as desired.

## Formula Bar

On the left hand side of the Formula Bar is a small text box, called the *Name Box*, with a letter and number combination in it, such as *A1* in Figure 9. This combination, called the cell reference, is the column letter and row number of the selected cell.

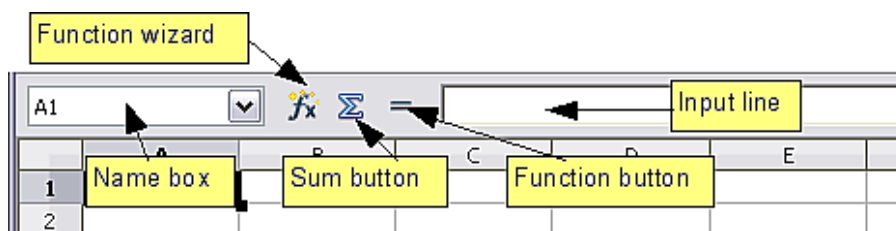


Figure 9: Formula Bar



To the right of the Name Box are the **Function Wizard**, **Sum**, and **Function** buttons.

Clicking the **Function Wizard** button opens a dialog from which you can search through a list of available functions. This can be very useful because it also shows how the functions are formatted.

In a spreadsheet the term *function* covers much more than just mathematical functions. See Chapter 7, Using Formulas and Functions, for more details.

Click  $\Sigma$  into the current cell totals the numbers in the cells above the current cell. If there are no numbers above the current cell, then the cells to the left are placed in the Sum formula.

Clicking the **Function** button inserts an equals (=) sign into the selected cell and the Input line, thereby enabling the cell to accept a formula.

When you enter new data into a cell, the Sum and Equals buttons change to **Cancel** and **Accept** buttons  .

The contents of the current cell (data, formula, or function) are displayed in the **Input line**, which is the remainder of the Formula Bar. You can either edit the cell contents of the current cell there, or

you can do that in the current cell. To edit inside the Input line area, click in the area, then type your changes. To edit within the current cell, just *double-click* the cell.

## Right-click (context) menus

*Right-click* on a cell, graphic, or other object to open a context menu. Often the context menu is the fastest and easiest way to reach a function. If you're not sure where in the menus or toolbars a function is located, you may be able to find it by right-clicking.

## Individual cells

The main section of the screen displays the cells in the form of a grid, with each cell being at the intersection of a column and a row.

At the top of the columns and at the left end of the rows are a series of gray boxes containing letters and numbers. These are the column and row headers. The columns start at A and go on to the right, and the rows start at 1 and go down.

These column and row headers form the cell references that appear in the Name Box on the Formula Bar (see Figure 9). You can turn these headers off by selecting **View > Column & Row Headers**.

## Sheet tabs

At the bottom of the grid of cells are the sheet tabs. These tabs enable access to each individual sheet, with the visible (active) sheet having a white tab. Clicking on another sheet tab displays that sheet, and its tab turns white. You can also select multiple sheet tabs at once by holding down the *Control* key while you click the names.

From Calc 3.4, you can choose colors for the different sheet tabs. Right-click on a tab and choose **Tab Color** from the context menu to open a palette of colors (see Figure 10). To add new colors to the palette, see "Color options" in Chapter 14, Setting up and Customizing Calc.

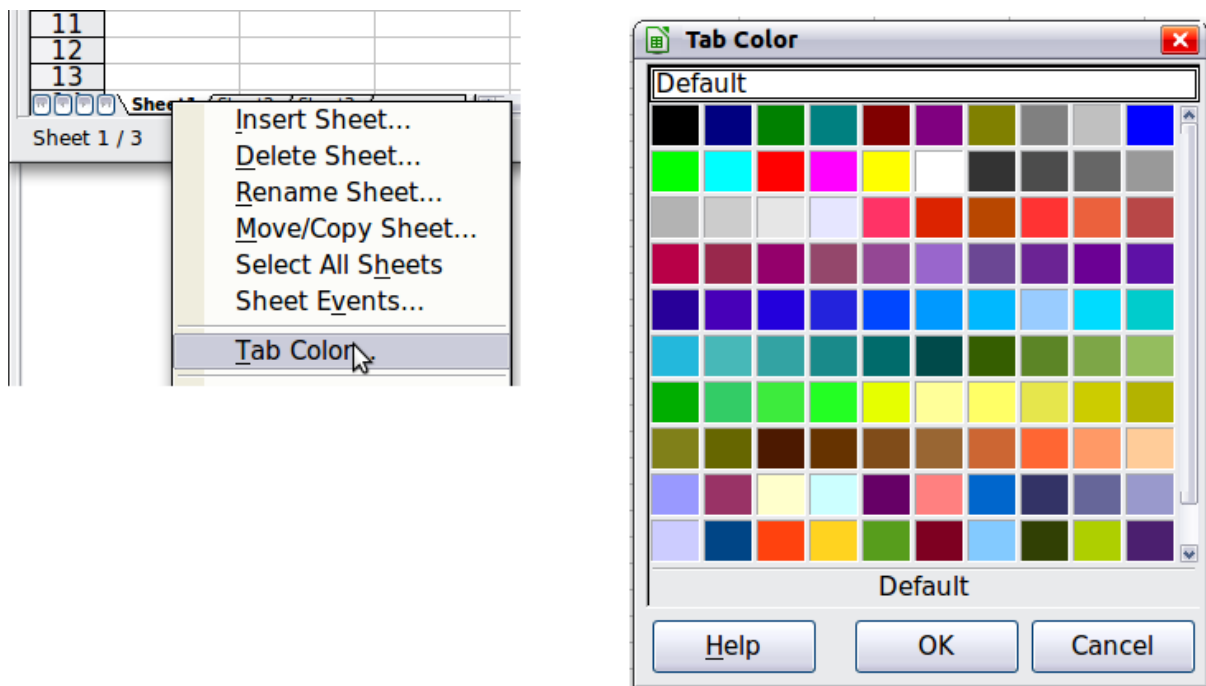


Figure 10: Choose tab color

## Status bar

The Calc status bar provides information about the spreadsheet and convenient ways to quickly change some of its features.

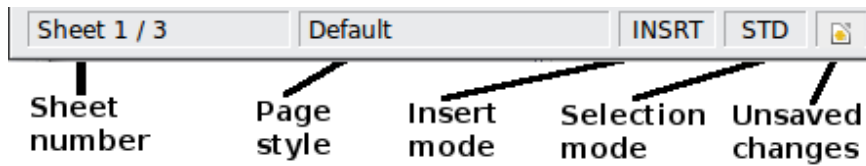


Figure 11: Left end of Calc status bar



Figure 12: Right end of Calc status bar

### Sheet sequence number ( )

Shows the sequence number of the current sheet and the total number of sheets in the spreadsheet. The sequence number may not correspond with the name on the sheet tab.

### Page style ( )

Shows the page style of the current sheet. To edit the page style, *double-click* on this field. The Page Style dialog opens.

### Insert mode ( )

Click to toggle between **INSRT** (*Insert*) and **OVER** (*Overwrite*) modes when typing. This field is blank when the spreadsheet is not in a typing mode (for example, when selecting cells).

### Selection mode ( )


Click to toggle between **STD** (*Standard*), **EXT** (*Extend*), and **ADD** (*Add*) selection. **EXT** is an alternative to *Shift+click* when selecting cells. See page 24 for more information.

### Unsaved changes ( )

This icon replaces the standard icon  if changes to the spreadsheet have not been saved.

### Digital signature ( )

If the document has not been digitally signed, *double-clicking* in this area opens the Digital Signatures dialog, where you can sign the document. See Chapter 6, Printing, Exporting, and E-mailing, for more about digital signatures.

If the document has been digitally signed, an icon  shows in this area. You can *double-click* the icon to view the certificate. A document can be digitally signed only after it has been saved.

### Cell or object information ( )

Displays information about the selected items. When a group of cells is selected, the sum of the contents is displayed by default; you can right-click on this field and select other functions, such as the average value, maximum value, minimum value, or count (number of items selected).

When the cursor is on an object such as a picture or chart, the information shown includes the size of the object and its location.

Zoom (  )

To change the view magnification, drag the Zoom slider or click on the + and – signs. You can also *right-click* on the zoom level percentage to select a magnification value or *double-click* to open the Zoom & View Layout dialog.

## Starting new spreadsheets

---

You can start a new, blank document in Calc in several ways.

- **From the operating system menu**, in the same way that you start other programs. When LibreOffice was installed on your computer, in most cases a menu entry for each component was added to your system menu. If you are using a Mac, you should see the LibreOffice icon in the Applications folder. When you *double-click* this icon, LibreOffice opens at the Start Center (Figure 14).
- **From the Quickstarter**, if it has been enabled in **Tools > Options > LibreOffice – Memory**, which is found in Windows, some Linux distributions, and (in a slightly different form) in Mac OS X. The Quickstarter is an icon that is placed in the system tray or the dock during system startup. It indicates that LibreOffice has been loaded and is ready to use. *Right-click* the **Quickstarter** icon (Figure 13) in the system tray to open a menu from which you can open a new document, open the Templates and Documents dialog box, or choose an existing document to open. You can also *double-click* the **Quickstarter** icon to display the Templates and Documents dialog box.

See Chapter 1, Introducing LibreOffice, in the *Getting Started* guide for more information about using the Quickstarter.

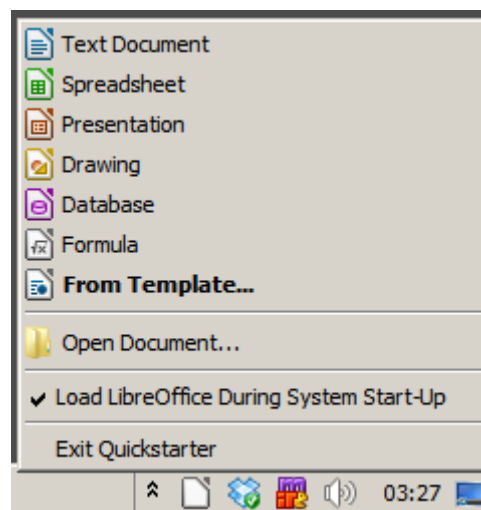


Figure 13: Quickstarter menu on Windows 7

- **From the Start Center.** When LibreOffice is open but no document is open (for example, if you close all the open documents but leave the program running), the Start Center is shown. Click one of the icons to open a new document of that type, or click the **Templates** icon to start a new document using a template. If a document is already open in LibreOffice, the new document opens in a new window.



Figure 14: LibreOffice Start Center

When LibreOffice is open, you can also start a new document in one of the following ways.

- Press the *Control+N* keys.
- Use **File > New > Spreadsheet**.
- Click the **New** button on the main toolbar.

### Starting a new document from a template

Calc documents can also be created from templates. Follow the above procedures, but instead of choosing **Spreadsheet**, choose the **Templates** icon from the Start Center or **File > New > Templates and Documents** from the Menu bar or toolbar.

On the Templates and Documents dialog (Figure 15), click the **Templates** icon on the left (if it is not already selected), then navigate to the appropriate folder and *double-click* on the required template. A new spreadsheet, based on the selected template, opens.

A new LibreOffice installation does not contain many templates, but you can add more by downloading them from <http://templates.libreoffice.org> or other sources and installing them on your computer as described in Chapter 4, Using Styles and Templates in Calc. On some websites you may find collections of templates that have been packaged into extension (.OXT) files. These are installed a little differently, as described in Chapter 14, Setting Up and Customizing Calc.

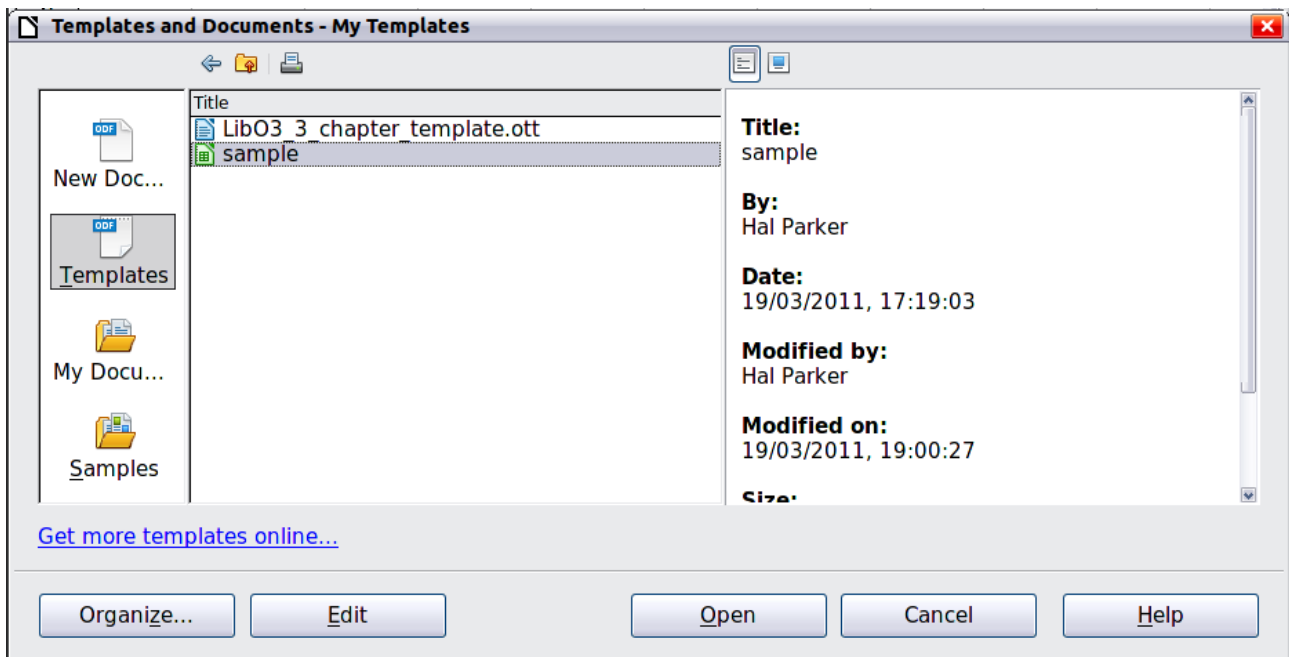
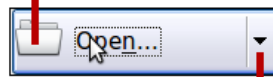


Figure 15: Starting a new spreadsheet from a template

## Opening existing spreadsheets

When no document is open, the Start Center (Figure 14) provides an icon for opening an existing document or choosing from a list of recently-edited documents.

Open a file browser



Open a list of recently edited documents

You can also open an existing document in one of the following ways. If a document is already open in LibreOffice, the second document opens in a new window.

- Choose **File > Open**
- Click the **Open** button on the main toolbar.
- Press *Control+O* on the keyboard.
- Use **File > Recent Documents** to display the last 10 files that were opened in any of the LibreOffice components.
- Use the **Open Document** selection on the Quickstarter.

In each case, the Open dialog box appears. Select the file you want, and then click **Open**. If a document is already open in LibreOffice, the second document opens in a new window.

If you have associated Microsoft Office file formats with LibreOffice, you can also open these files by double-clicking on them.

## Opening CSV files

Comma-separated-values (CSV) files are text files that contain the cell contents of a single sheet. Each line in a CSV file represents a row in a spreadsheet. Commas, semicolons, or other

characters are used to separate the cells. Text is entered in quotation marks; numbers are entered without quotation marks.

To open a CSV file in Calc:

- 1) Choose **File > Open**.
- 2) Locate the CSV file that you want to open.
- 3) If the file has a \*.csv extension, select the file and click **Open**.
- 4) If the file has another extension (for example, \*.txt), select the file, select **Text CSV (\*csv;\*txt)** in the File type box (scroll down into the spreadsheet section to find it), and then click **Open**.
- 5) On the Text Import dialog (Figure 16), select the Separator options to divide the text in the file into columns.

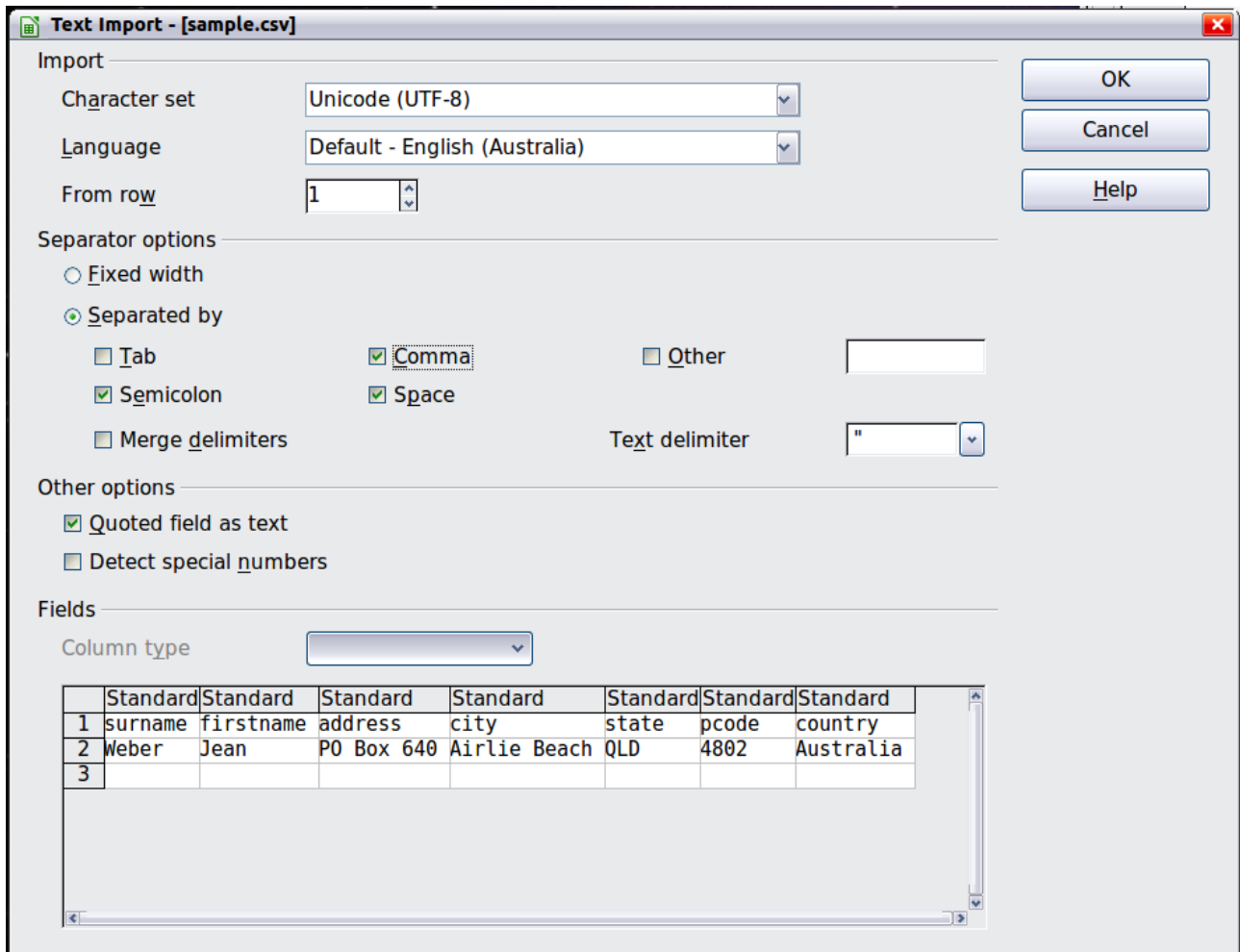


Figure 16: Text Import dialog, with Comma (,) selected as the separator and double quotation mark (") as the text delimiter.

You can preview the layout of the imported data at the bottom of the dialog. *Right-click* a column in the preview to set the format or to hide the column.

If the CSV file uses a text delimiter character that is not in the Text delimiter list, click in the box, and type the character.

- 6) The choices in the *Other options* section determine whether quoted data will always be imported as text, and whether Calc will automatically detect all number formats, including special number formats such as dates, time, and scientific notation. The detection depends on the language settings.
- 7) Click **OK** to open the file.



## Caution



If you do not select **Text CSV (\*.csv;\*.txt)** as the file type when opening the file, the document opens in Writer, not Calc.

## Saving spreadsheets

Spreadsheets can be saved in three ways.

- Press *Control+S*.
- Choose **File > Save** (or **Save All** or **Save As**).
- Click the **Save** button on the main toolbar.

If the spreadsheet has not been saved previously, then each of these actions will open the Save As dialog. There you can specify the spreadsheet name and the location in which to save it.

## Note

If the spreadsheet has been previously saved, then saving it using the **Save** (or **Save All**) command will overwrite an existing copy. However, you can save the spreadsheet in a different location or with a different name by selecting **File > Save As**.

## Saving a document automatically

You can choose to have Calc save your spreadsheet automatically at regular intervals. Automatic saving, like manual saving, overwrites the last saved state of the file. To set up automatic file saving:

- 1) Choose **Tools > Options > Load/Save > General**.
- 2) Click on **Save AutoRecovery information every** and set the time interval. The default value is 15 minutes. Enter the value you want by typing it or by pressing the up or down arrow keys.

## Saving as a Microsoft Excel document

If you need to exchange files with users of Microsoft Excel who are unwilling or unable to receive \*.ods files, you can save a document as an Excel file (\*.xls or \*.xlsx).

- 1) **Important**—First save your spreadsheet in the file format used by LibreOffice, \*.ods. If you do not, any changes you may have made since the last time you saved it will only appear in the Microsoft Excel version of the document.
- 2) Then choose **File > Save As**.
- 3) On the Save As dialog (Figure 17), in the **File type** (or **Save as type**) drop-down menu, select the type of Excel format you need. You may wish to change the file name too.
- 4) Click **Save**.

## Caution



From this point on, *all changes you make to the spreadsheet will occur only in the Microsoft Excel document*. You have changed the name and file type of your document. If you want to go back to working with the \*.ods version of your spreadsheet, you must open it again.

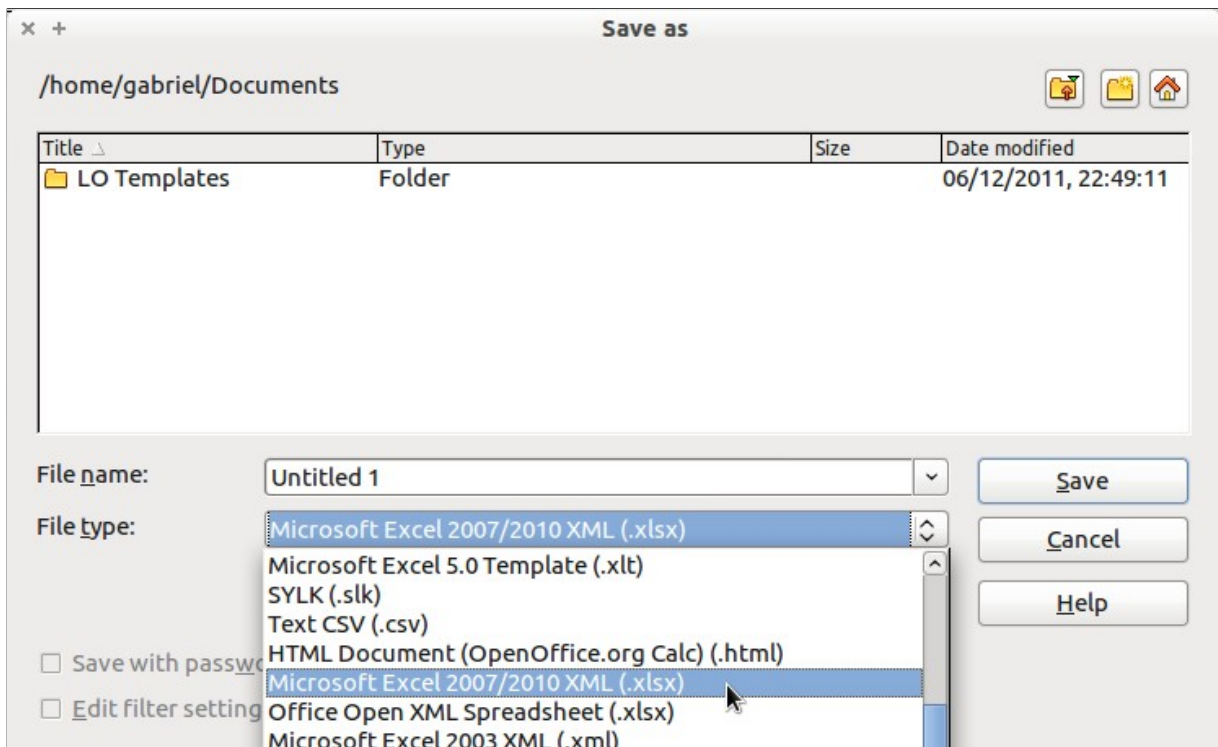


Figure 17. Saving a spreadsheet in Microsoft Excel format

### Tip

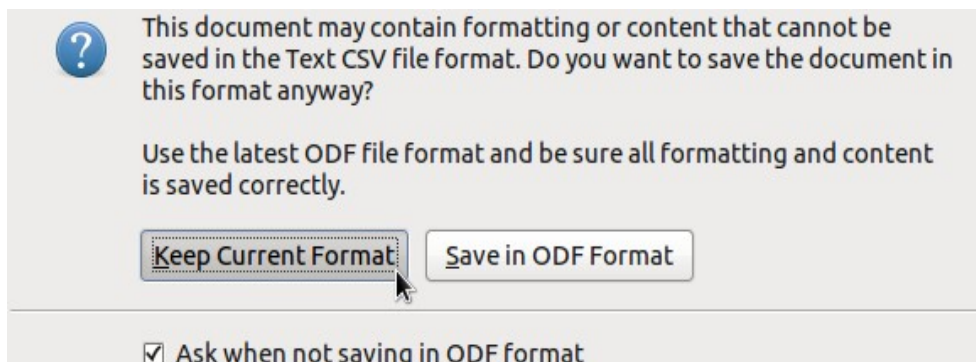
To have Calc save documents by default in a Microsoft Excel file format, go to **Tools > Options > Load/Save > General**. In the section named *Default file format and ODF settings*, under *Document type*, select **Spreadsheet**, then under *Always save as*, select your preferred file format.

## Saving as a CSV file

To save a spreadsheet as a comma separated value (CSV) file:

- 1) Choose **File > Save As**.
- 2) In the *File name* box, type a name for the file.
- 3) In the *File type* list, select **Text CSV (.csv)** and click **Save**.

You may see the message box shown below. Click **Keep Current Format**.



- 4) In the Export Text file dialog, select the options you want and then click **OK**.

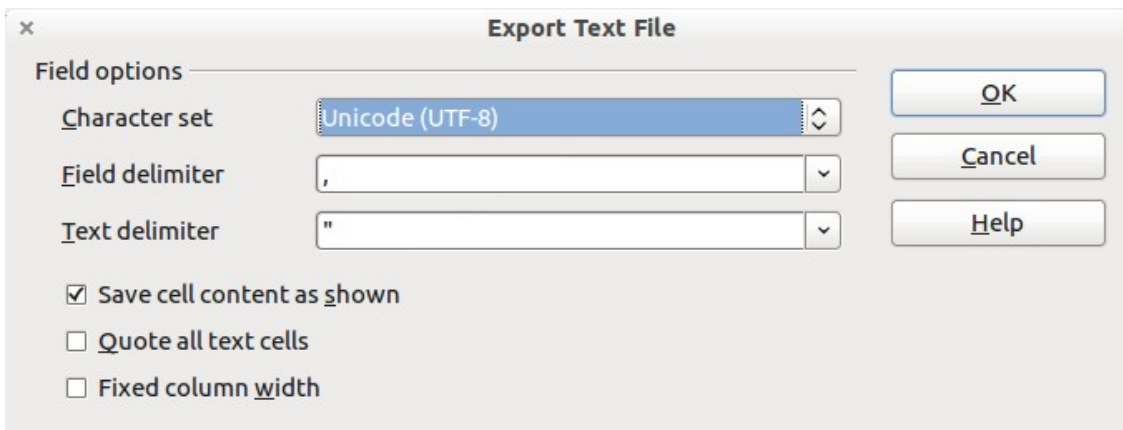


Figure 18: Choosing options when exporting to Text CSV

## Saving in other formats

Calc can save spreadsheets in a range of formats, including HTML (Web pages), through the Save As dialog. Calc can also export spreadsheets to the PDF and XHTML file formats. See Chapter 6, Printing, Exporting, and E-mailing, for more information.

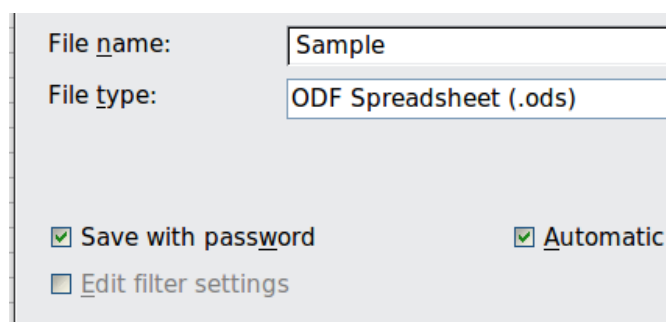
## Password protection

---

### Protecting a spreadsheet

Calc provides two levels of document protection: *read-protect* (file cannot be viewed without a password) and *write-protect* (file can be viewed in read-only mode but cannot be changed without a password). Thus you can make the content available for reading by a selected group of people and for reading and editing by a different group. This behavior is compatible with Microsoft Excel file protection.

- 1) Use **File > Save As** when saving the document. (You can also use **File > Save** the first time you save a new document.)
- 2) On the Save As dialog, type the file name, select the **Save with password** option, and then click **Save**.



- 3) The Set Password dialog (Figure 19) opens. Here you have several choices:
  - To read-protect the document, type a password in the two fields at the top of the dialog.
  - To write-protect the document, click the **More Options** button and select the **Open file read-only** option.
  - To write-protect the document but allow selected people to edit it, select the **Open file read-only** option and type a password in the two boxes at the bottom of the dialog box.

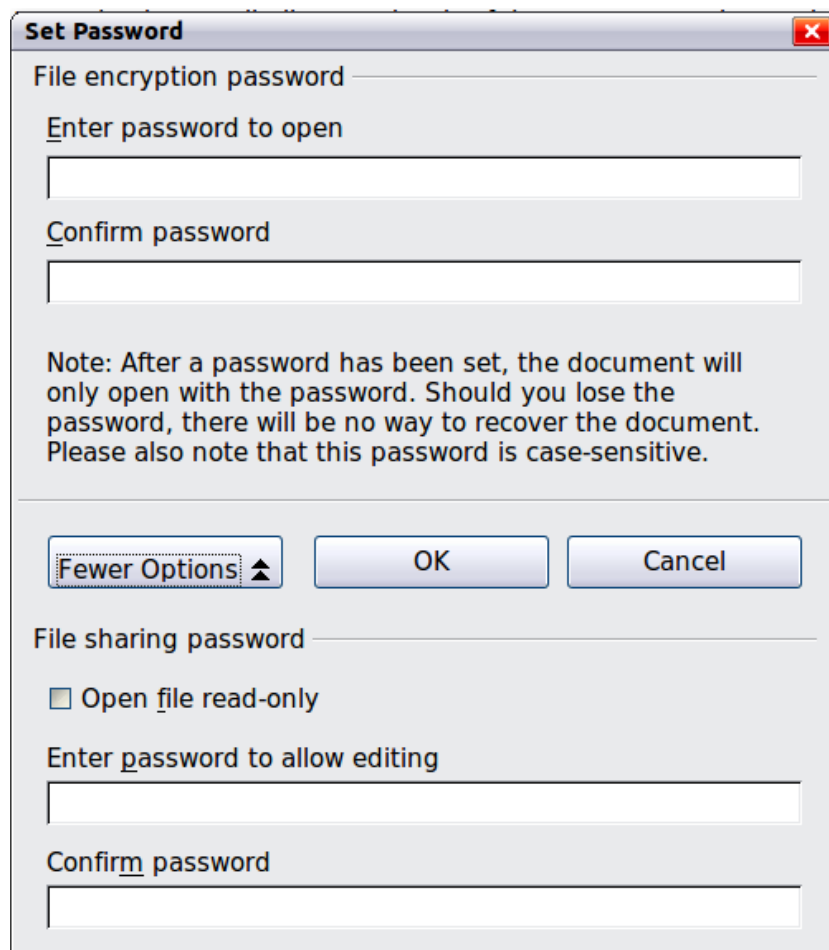


Figure 19: Two levels of password protection

- 4) Click **OK** to save the file. If either pair of passwords do not match, you receive an error message. Close the message box to return to the Set Password dialog box and enter the password again.

### Caution



LibreOffice uses a very strong encryption mechanism that makes it almost impossible to recover the contents of a document if you lose the password.

## Changing an existing password

To change an existing password while the document is open:

- 1) Use **File > Properties** to open the spreadsheet properties dialog.
- 2) In the **General** tab, click the **Change Password** button, which is located at the top right corner next to the file name.
- 3) The **Set Password** dialog opens; see Figure 19.

## Navigating within spreadsheets

Calc provides many ways to navigate within a spreadsheet from cell to cell and sheet to sheet. You can generally use whatever method you prefer.

## Going to a particular cell

### Using the mouse

Place the mouse pointer over the cell and click.

### Using a cell reference

Click on the little inverted black triangle just to the right of the Name Box (Figure 9). The existing cell reference will be highlighted. Type the cell reference of the cell you want to go to and press *Enter*. Cell references are case insensitive: a3 or A3, for example, are the same. Or just click into the Name Box, backspace over the existing cell reference, and type in the cell reference you want and press *Enter*.

### Using the Navigator

Click on the **Navigator** button in the Standard toolbar (or press *F5*) to display the Navigator. Type the cell reference into the top two fields, labeled Column and Row, and press *Enter*. In Figure 34 on page 35, the Navigator would select cell A7. For more about using the Navigator, see page 34.

## Moving from cell to cell

In the spreadsheet, one cell normally has a darker black border. This black border indicates where the *focus* is (see Figure 20). The focus indicates which cell is enabled to receive input. If a group of cells is selected, they have a highlight color (usually gray), with the focus cell having a dark border.

### Using the mouse

To move the focus using the mouse, simply move the mouse pointer to the cell where you want the focus to be and click the left mouse button. This action changes the focus to the new cell. This method is most useful when the two cells are a large distance apart.

### Using the Tab and Enter keys

- Pressing *Enter* or *Shift+Enter* moves the focus down or up, respectively.
- Pressing *Tab* or *Shift+Tab* moves the focus to the right or to the left, respectively.

### Using the arrow keys

Pressing the arrow keys on the keyboard moves the focus in the direction of the arrows.

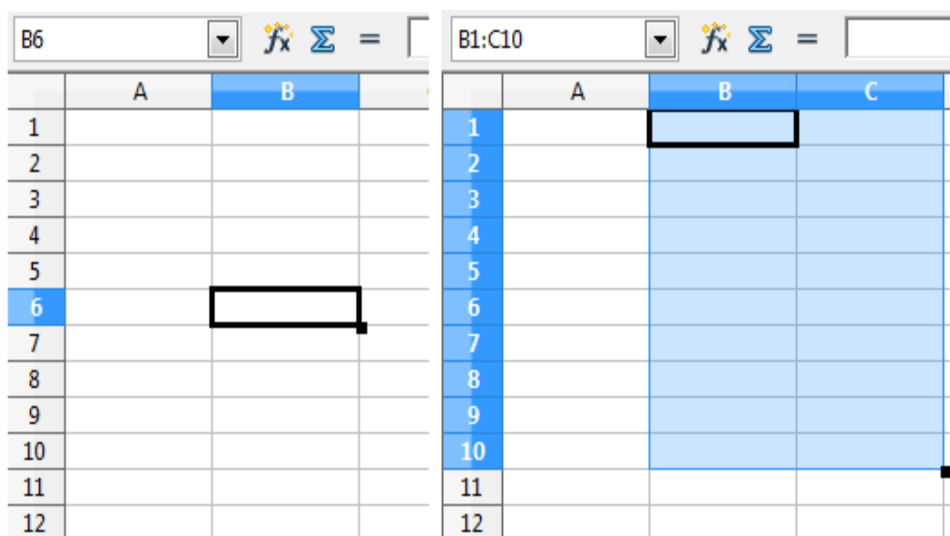


Figure 20. (left) One selected cell and (right) a group of selected cells

## Using Home, End, Page Up and Page Down

- *Home* moves the focus to the start of a row.
- *End* moves the focus to the column furthest to the right that contains data.
- *Page Down* moves the display down one complete screen and *Page Up* moves the display up one complete screen.
- Combinations of *Control* (often represented on keyboards as *Ctrl*) and *Alt* with *Home*, *End*, *Page Down* (*PgDn*), *Page Up* (*PgUp*), and the arrow keys move the focus of the current cell in other ways. Table 1 describes the keyboard shortcuts for moving about a spreadsheet.

### Tip

Use one of the two *Alt+Arrow* key combinations to resize the width of a cell. (For example: *Alt+→* increases the width of a cell.)

### Note

In this release of Calc, *Alt+Up Arrow* and *Alt+Down Arrow* as key combinations to alter row height, are not implemented in the Default key bindings.

Table 1. Moving from cell to cell using the keyboard

Key Combination	Movement
→	Right one cell
←	Left one cell
↑	Up one cell
↓	Down one cell
<i>Control+→</i>	To the next column to the right containing data in that row or to Column AMJ
<i>Control+←</i>	To the next column to the left containing data in that row or to Column A
<i>Control+↑</i>	To the next row above containing data in that column or to Row 1
<i>Control+↓</i>	To the next row below containing data in that column or to Row 1048576
<i>Control+Home</i>	To Cell A1
<i>Control+End</i>	To lower right-hand corner of the rectangular area containing data
<i>Alt+Page Down</i>	One screen to the right (if possible)
<i>Alt+Page Up</i>	One screen to the left (if possible)
<i>Control+Page Down</i>	One sheet to the right (in sheet tabs)
<i>Control+Page Up</i>	One sheet to the left (in sheet tabs)
<i>Tab</i>	To the next cell on the right
<i>Shift+Tab</i>	To the next cell on the left
<i>Enter</i>	Down one cell (unless changed by user)
<i>Shift+Enter</i>	Up one cell (unless changed by user)

## Customizing the effect of the Enter key

You can customize the direction in which the *Enter* key moves the focus, by selecting **Tools > Options > LibreOffice Calc > General**.

The four choices for the direction of the *Enter* key are shown on the right hand side of Figure 21. It can move the focus down, right, up, or left. Depending on the file being used or on the type of data being entered, setting a different direction can be useful.

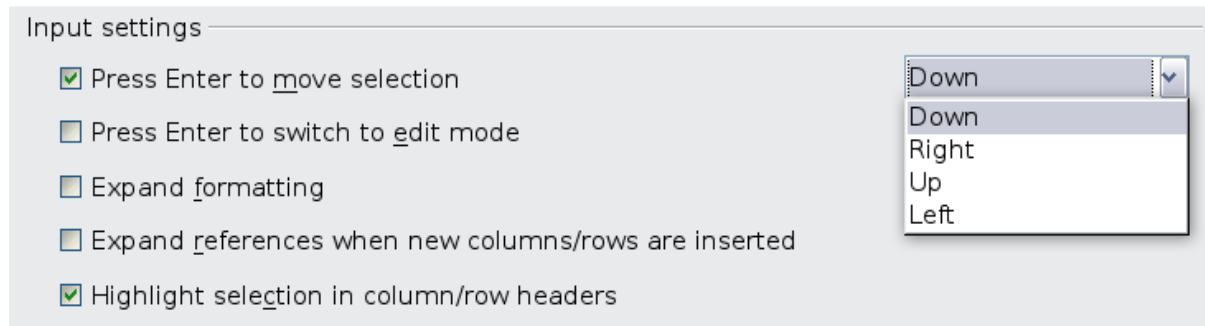


Figure 21: Customizing the effect of the Enter key

The *Enter* key can also be used to switch into and out of the editing mode. Use the first two options under *Input settings* in Figure 21 to change the *Enter* key settings.

## Moving from sheet to sheet

Each sheet in a spreadsheet is independent of the others, though they can be linked with references from one sheet to another. There are three ways to navigate between different sheets in a spreadsheet.

### Using the keyboard

Pressing *Control+Page Down* moves one sheet to the right and pressing *Control+Page Up* moves one sheet to the left.

### Using the mouse

Clicking on one of the sheet tabs at the bottom of the spreadsheet selects that sheet.

If you have a lot of sheets, then some of the sheet tabs may be hidden behind the horizontal scroll bar at the bottom of the screen. If this is the case, then the four buttons at the left of the sheet tabs can move the tabs into view. Figure 22 shows how to do this.

Notice that the sheets here are not in number order. Sheets may have their positions moved around (see *Moving and copying sheets*). The Status bar shows that Sheet7 is in position three of the eight sheets in the book.

#### Note

The sheet tab arrows that appear in Figure 22 only appear if you have some sheet tabs that can not be seen. Otherwise, they appear faded.

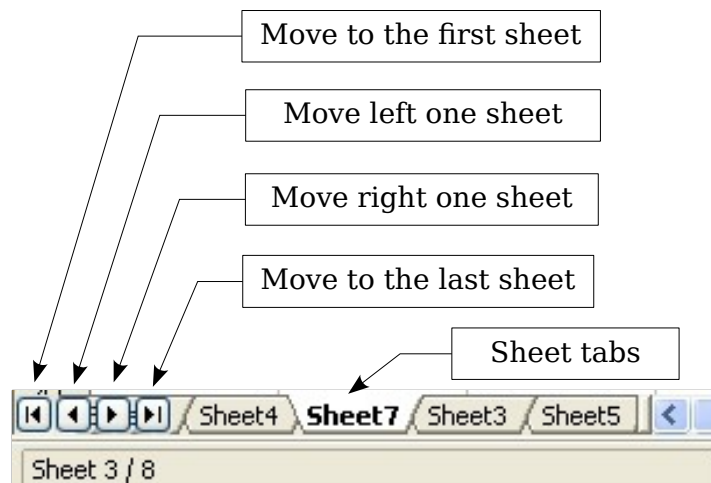


Figure 22. Sheet tab arrows

## Selecting items in a sheet or spreadsheet

### Selecting cells

Cells can be selected using a number of methods and in a variety of combinations and quantities.

#### Single cell

Left-click in the cell. The result will look like the left side of Figure 20. You can verify your selection by looking in the Name Box.

#### Range of contiguous cells

A range of cells can be selected using the keyboard or the mouse.

To select a range of cells by dragging the mouse:

- 1) Click in a cell.
- 2) Press and hold down the left mouse button.
- 3) Move the mouse around the screen.
- 4) Once the desired block of cells is highlighted, release the left mouse button.

To select a range of cells without dragging the mouse:

- 1) Click in the cell which is to be one corner of the range of cells.
- 2) Move the mouse to the opposite corner of the range of cells.
- 3) Hold down the *Shift* key and *click*.

#### Tip

You can also select a contiguous range of cells by first clicking in the **STD** field on the status bar and changing it to **EXT**, before clicking in the opposite corner of the range of cells. If you use this method, be sure to change **EXT** back to **STD** or you may find yourself extending the selection unintentionally.

To select a range of cells without using the mouse:

- 1) Select the cell that will be one of the corners in the range of cells.
- 2) While holding down the *Shift* key, use the cursor arrows to select the rest of the range.

The result of any of these methods looks like the right side of Figure 20.



### Tip

You can also directly select a range of cells using the Name Box. Click into the Name Box as described in “Using a cell reference” on page 21. To select a range of cells, enter the cell reference for the upper left-hand cell, followed by a colon (:), and then the lower right-hand cell reference. For example, to select the range that would go from A3 to C6, you would enter A3:C6.

### Range of non-contiguous cells

- 1) Select the cell or range of cells using one of the methods above.
- 2) Move the mouse pointer to the start of the next range or single cell.
- 3) Hold down the *Control* key and click or click-and-drag to select another range of cells to add to the first range.
- 4) Repeat as necessary.

### Tip

You can also select a non-contiguous range of cells by first clicking twice in the **STD** field on the status bar to change it to **ADD**, before clicking on a cell that you want to add to the range of cells in selected in step 3 above. This method works best when adding single cells to a range. If you use this method, be sure to change **ADD** back to **STD** or you may find yourself adding more selections unintentionally.

## Selecting columns and rows

Entire columns and rows can be selected very quickly in LibreOffice.

### Single column or row

To select a single column, click on the column identifier letter (see Figure 1).

To select a single row, click on the row identifier number.

### Multiple columns or rows

To select multiple columns or rows that are contiguous:

- 1) Click on the first column or row in the group.
- 2) Hold down the *Shift* key.
- 3) Click the last column or row in the group.

To select multiple columns or rows that are not contiguous:

- 1) Click on the first column or row in the group.
- 2) Hold down the *Control* key.
- 3) Click on all of the subsequent columns or rows while holding down the *Control* key.

### Entire sheet

To select the entire sheet, click on the small box between the A column header and the 1 row header. You can also press *Control+A* to select the entire sheet.

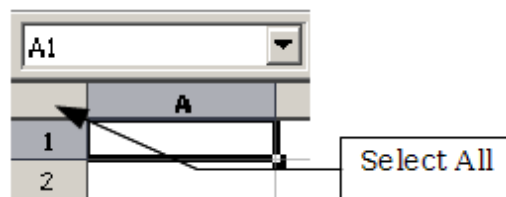


Figure 23. Select All box

## Selecting sheets

You can select either one or multiple sheets. It can be advantageous to select multiple sheets at times when you want to make changes to many sheets at once.

### Single sheet

Click on the sheet tab for the sheet you want to select. The tab for the selected sheet becomes white (see Figure 22).

### Multiple contiguous sheets

To select multiple contiguous sheets:

- 1) Click on the sheet tab for the first desired sheet.
- 2) Move the mouse pointer over the sheet tab for the last desired sheet.
- 3) Hold down the *Shift* key and click on the sheet tab.

All the tabs between these two sheets will turn white. Any actions that you perform will now affect all highlighted sheets.

### Multiple non-contiguous sheets

To select multiple non-contiguous sheets:

- 1) Click on the sheet tab for the first desired sheet.
- 2) Move the mouse pointer over the sheet tab for the second desired sheet.
- 3) Hold down the *Control* key and click on the sheet tab.
- 4) Repeat as necessary.

The selected tabs will turn white. Any actions that you perform will now affect all highlighted sheets.

### All sheets

*Right-click* any one of the sheet tabs and choose **Select All Sheets** from the context menu.

#### Note

If a color has been set for the tab, then on selection the lower edge of the tab has the color and the remainder of the tab is white.

## Working with columns and rows

### Inserting columns and rows

Columns and rows can be inserted individually or in groups.

#### Note

When you insert a single new column, it is inserted to the *left* of the highlighted column. When you insert a single new row, it is inserted *above* the highlighted row. Cells in the new columns or rows are formatted like the corresponding cells in the column or row before (or to the left of) which the new column or row is inserted.

### Single column or row

Using the **Insert** menu:

- 1) Select the cell, column, or row where you want the new column or row inserted.
- 2) Choose either **Insert > Columns** or **Insert > Rows**.

Using the mouse:

- 1) Select the cell, column, or row where you want the new column or row inserted.
- 2) *Right-click* the header of the column or row.
- 3) Choose **Insert Rows** or **Insert Columns**.

### Multiple columns or rows

Multiple columns or rows can be inserted at once rather than inserting them one at a time.

- 1) Highlight the required number of columns or rows by holding down the left mouse button on the first one and then dragging across the required number of identifiers.
- 2) Proceed as for inserting a single column or row above.

## Deleting columns and rows

Columns and rows can be deleted individually or in groups.

### Single column or row

To delete a single column or row:

- 1) Select the column or row to be deleted.
- 2) Choose **Edit > Delete Cells** from the menu bar.

Or,

- 1) Right-click on the column or row header.
- 2) Choose **Delete Columns** or **Delete Rows** from the context menu.

### Multiple columns or rows

Multiple columns or rows can be deleted at once rather than deleting them one at a time.

- 1) Highlight the required columns or rows by holding down the left mouse button on the first one and then dragging across the required number of identifiers.
- 2) Proceed as for deleting a single column or row as above.


#### Tip

Instead of deleting a row or column, you may wish to delete the contents of the cells but keep the empty row or column. See Chapter 2, Entering, Editing, and Formatting Data, for instructions.

## Working with sheets

Like any other Calc element, sheets can be inserted, copied, moved, deleted, and renamed.

### Inserting new sheets

There are several ways to insert a new sheet. The fastest method is to click on the **Add Sheet** button . This inserts one new sheet at that point, without opening the Insert Sheet dialog.

Use one of the other methods to insert more than one sheet, to rename the sheet at the same time, or to insert the sheet somewhere else in the sequence. The first step for all of the methods is to select the sheets that the new sheet will be inserted next to. Then use any of the following options.

- Choose **Insert > Sheet** from the menu bar.
- Right-click on the sheet tab and choose **Insert Sheet**.

- Click in an empty space at the end of the line of sheet tabs.

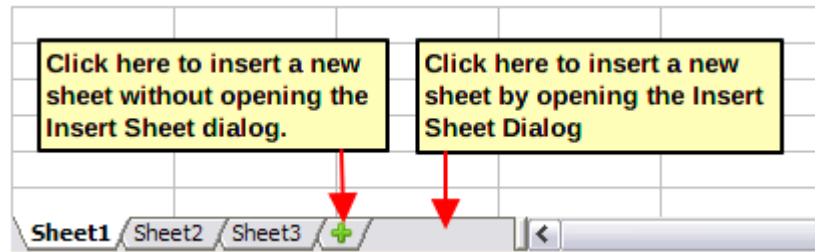


Figure 24. Creating a new sheet

Each method will open the Insert Sheet dialog (Figure 20). Here you can select whether the new sheet is to go before or after the selected sheet and how many sheets you want to insert. If you are inserting only one sheet, there is the opportunity to give the sheet a name.

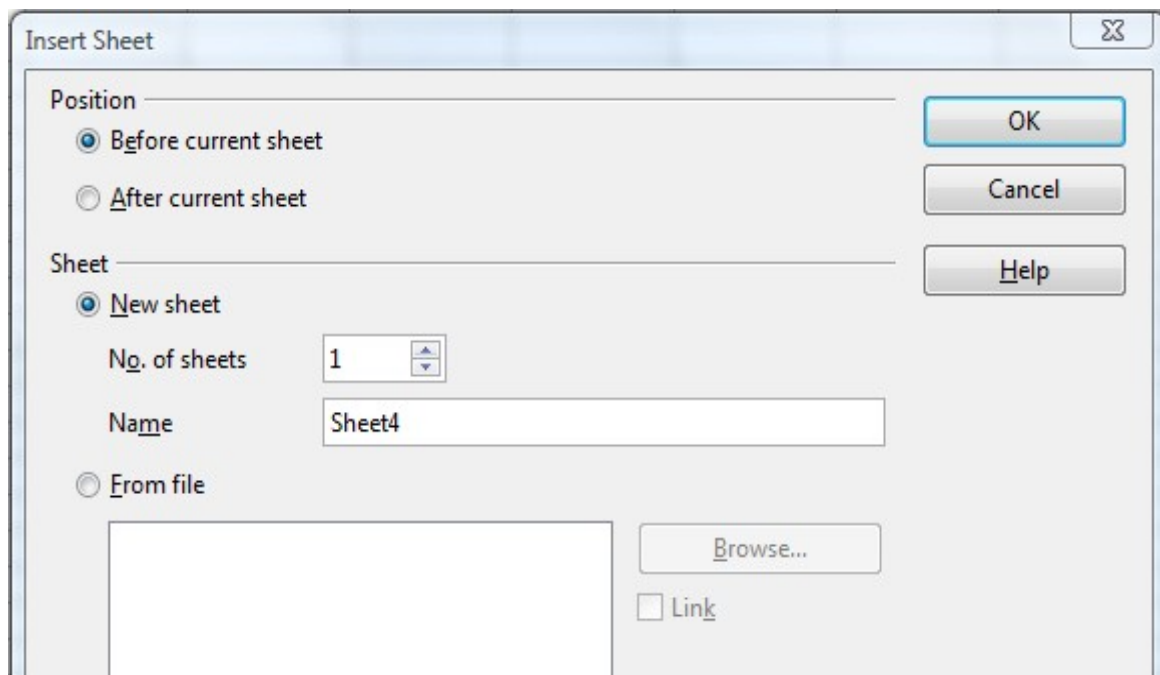


Figure 25: Insert Sheet dialog

## Moving and copying sheets

You can move or copy sheets within the same spreadsheet by using either the mouse (drag and drop) or a dialog. Drag and drop does not work if you wish to move or copy a sheet to a different spreadsheet; instead, you need to use the dialog.

### Using the mouse

To move a sheet to a different position within the same spreadsheet, click on the sheet tab and drag it. Two little triangles indicate where the sheet will be dropped (see Figure 26). The mouse pointer (not shown in the illustration) may change to include an indicator; the indicator symbol varies with your operating system.

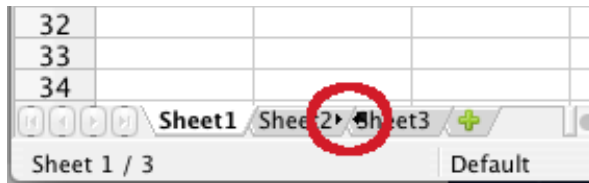


Figure 26: Dragging a sheet to move it

To *copy* a sheet within the same spreadsheet, hold down the *Control* key (*Option* key on Mac) while you click on the sheet tab and drag it. The mouse pointer may change to include a plus sign or other indicator; the symbol varies with your operating system.

### Using a dialog

The Move/Copy dialog provides the opportunity to specify exactly where you want the sheet to go (in the same or a different document, and what its name will be, at the same time as moving or copying occurs).

#### Note

When moving or copying sheets between different spreadsheets, be sure that both documents are open.

Follow these steps:

- 1) In the current document, *right-click* on the sheet tab you wish to move or copy.
- 2) Select **Move/Copy Sheet** from the context menu.
- 3) On the Move/Copy Sheet dialog (Figure 27):
  - Select the action: **Move** or **Copy**.
  - **To document:** select the document where you want to place the sheet. By default, the field will show the current location. If you have another spreadsheet document open, its name will appear in the drop-down list along with **-new document-**.
  - **Insert before:** select the position within the target document.
  - **New name:** you can rename the sheet you are moving or assign a different name to the copied sheet. If you do not enter a name, Calc creates a default name.
- 4) When you are done, click **OK**.

#### Caution



If you choose **-new document-** as the location, a new spreadsheet will be created. This may cause conflicts with formulas linked to other sheets in the previous location. If you accidentally move a sheet, you can fix it by moving or copying the sheet back to the original location.

This caution also applies for moving sheets to other existing documents.

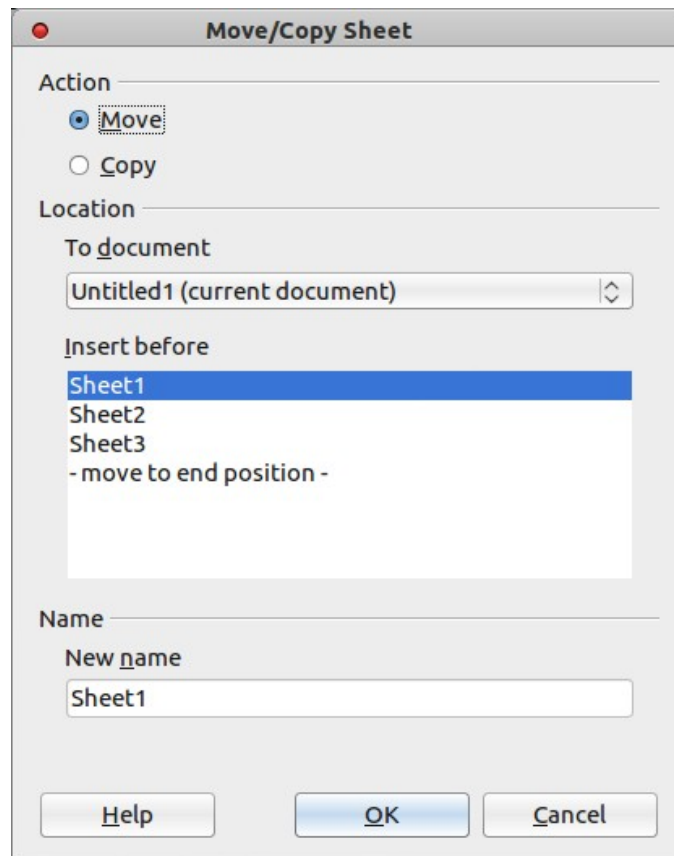


Figure 27: Move/Copy sheet dialog

## Deleting sheets

Sheets can be deleted individually or in groups.

### Single sheet

*Right-click* on the tab of the sheet you want to delete and choose **Delete Sheet** from the context menu, or choose **Edit > Sheet > Delete** from the Menu bar. Either way, an alert will ask if you want to delete the sheet permanently. Click **Yes**.

### Multiple sheets

To delete multiple sheets, select them as described earlier, then either *right-click* over one of the tabs and choose **Delete Sheet** from the context menu, or choose **Edit > Sheet > Delete** from the Menu bar.

## Renaming sheets

The default name for the a new sheet is *SheetX*, where *X* is a number. While this works for a small spreadsheet with only a few sheets, it becomes awkward when there are many sheets.

To give a sheet a more meaningful name, you can:

- Enter the name in the Name box when you create the sheet, or
- *Right-click* on a sheet tab and choose **Rename Sheet** from the context menu; replace the existing name with a different one.
- *Double-click* on a sheet tab to open the Rename Sheet dialog.

## Note

Sheet names must start with either a letter or a number; other characters including spaces are not allowed. Apart from the first character of the sheet name, allowed characters are letters, numbers, spaces, and the underscore character. Attempting to rename a sheet with an invalid name will produce an error message.

## Viewing Calc

### Using zoom

Use the zoom function to change the view to show more or fewer cells in the window.

In addition to using the Zoom slider on the Status bar (see page 13), you can open the Zoom dialog and make a selection on the left-hand side.

- Choose **View > Zoom** from the Menu bar, or
- *Double-click* on the percentage figure in the Status bar at the bottom of the window.

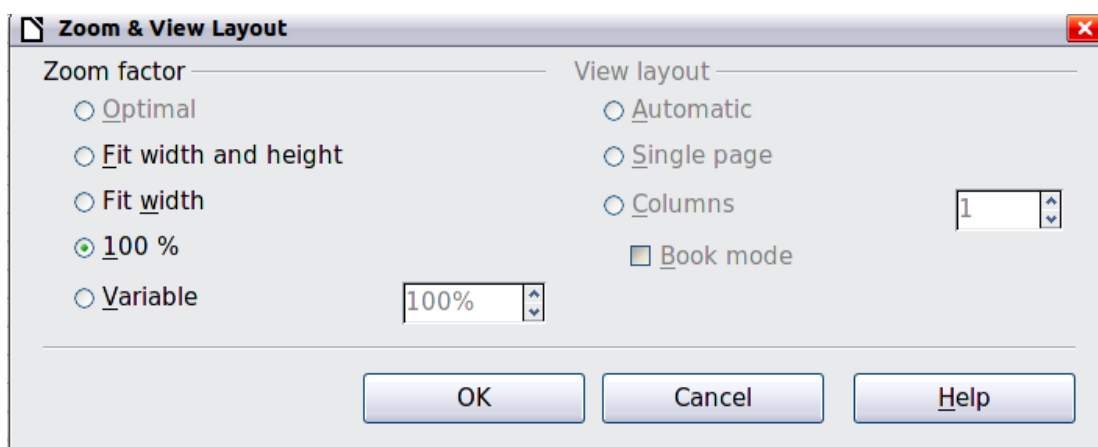


Figure 28. Zoom dialog

#### Optimal

Resizes the display to fit the width of the selected cells. To use this option, you must first highlight a range of cells.

#### Fit Width and Height

Displays the entire page on your screen.

#### Fit Width

Displays the complete width of the document page. The top and bottom edges of the page may not be visible.

#### 100%

Displays the document at its actual size.

#### Variable

Enter a zoom percentage of your choice.

### Freezing rows and columns

Freezing locks a number of rows at the top of a spreadsheet or a number of columns on the left of a spreadsheet or both. Then when scrolling around within the sheet, any frozen columns and rows remain in view.

Figure 29 shows some frozen rows and columns. The heavier horizontal line between rows 3 and 14 and the heavier vertical line between columns C and H denote the frozen areas. Rows 4 through 13 and columns D through G have been scrolled off the page. The first three rows and columns remained because they are frozen into place.

You can set the freeze point at one row, one column, or both a row and a column as in Figure 29.

### Freezing single rows or columns

- 1) Click on the header for the row below where you want the freeze or for the column to the right of where you want the freeze.
- 2) Choose **Window > Freeze**.  
A dark line appears, indicating where the freeze is put.

	A	B	C	H	I	J	K	L	M	N	O	P	Q	R	S	T
1				Safety Poster	Safety Contract	Safety Quiz 2	Unit Conv. Pop Qu	Element Quiz 1	Element Quiz 2	p. 36 15 & 16	Article Quiz	Lab #1	Chp. 1.1 #1-7	p. 35 ?'s	Chp. 1 Test	Penny Density
2		Total	Date	10-02	10-03	10-04	10-05	10-06	10-07	10-08	10-09	10-10	10-11	10-12	10-13	10-14
3	Average	267.5	Possible	28.0	1.0	3.0	12.0	18.0	28.0	4.0	6.0	6.0	3.5	4.0	78.0	11.0
14	78.6%	200.0	Smith, John	28.00	1.00	X	0.00	8.00	26.00	0.00	6.00	0.00	3.50	4.00	55.50	8.00
15	67.9%	181.5	Klein, Mike	28.00	1.00	1.00	11.50	8.00	6.00	0.00	5.00	6.00	3.50	3.50	47.50	10.00
16	72.7%	186.5	Johnson, Tom	27.00	1.00	3.00	0.00	13.00	6.00	0.00	6.00	6.00	3.50	3.00	47.50	9.00
17	82.6%	213.0	Doe, John	27.00	1.00	1.00	2.00	17.00	17.00	4.00	6.00	6.00	3.50	3.50	54.00	9.00
18	96.4%	258.0	Doe, Jane	28.00	1.00	3.00	9.00	16.00	28.00	4.00	6.00	6.00	3.50	4.00	79.50	10.00
19	67.3%	172.0	Kupfer, Peter	26.00	1.00	3.00	X	16.00	20.00	0.00	6.00	6.00	0.00	3.50	41.00	6.50
20	83.9%	224.5	Newton, Issac	28.00	1.00	3.00	6.00	15.00	23.00	4.00	6.00	6.00	3.50	3.50	57.50	9.00
21	80.6%	207.5	Lunak, Robert	26.00	0.00	2.00	5.00	15.00	17.00	4.00	6.00	6.00	3.50	0.00	62.50	9.00
22	78.1%	209.0	Matteson, Brittany	28.00	0.00	3.00	3.00	17.00	22.00	4.00	6.00	6.00	3.50	3.00	47.50	9.00
23	79.4%	212.5	Murphy, Kathleen	26.00	1.00	3.00	6.00	16.00	11.00	4.00	6.00	6.00	3.50	4.00	53.50	9.00

Figure 29. Frozen rows and columns

### Freezing a row and a column

- 1) Click into the cell that is immediately below the row you want frozen and immediately to the right of the column you want frozen.
- 2) Choose **Window > Freeze**.  
Two lines appear on the screen, a horizontal line above this cell and a vertical line to the left of this cell. Now as you scroll around the screen, everything above and to the left of these lines will remain in view.

### Unfreezing

To unfreeze rows or columns, choose **Window > Freeze**. The check mark by **Freeze** will vanish.

## Splitting the screen

Another way to change the view is by splitting the window, also known as splitting the screen. The screen can be split horizontally, vertically, or both. You can therefore have up to four portions of the spreadsheet in view at any one time.

Why would you want to do this? An example would be a large spreadsheet in which one of the cells has a number in it that is used by three formulas in other cells. Using the split-screen technique, you can position the cell containing the number in one section and each of the cells with formulas in the other sections. Then you can change the number in the cell and watch how it affects each of the formulas.



	A	B	C
1		Beta =	3.2000
2		A0 =	0.1000
5	A1=	Beta*A0*(1-A0)	0.2880
6	A2=	Beta*A1*(1-A1)	0.6562
7	A3=	Beta*A2*(1-A2)	0.7219
8	A4=	Beta*A3*(1-A3)	0.6424
9	A5=	Beta*A4*(1-A4)	0.7351
10	A6=	Beta*A5*(1-A5)	0.6231
11	A7=	Beta*A6*(1-A6)	0.7515
12	A8=	Beta*A7*(1-A7)	0.5975
13	A9=	Beta*A8*(1-A8)	0.7696
14	A10=	Beta*A9*(1-A9)	0.5675
15	A11=	Beta*A10*(1-A10)	0.7854
16	A12=	Beta*A11*(1-A11)	0.5393
17	A13=	Beta*A12*(1-A12)	0.7951
18			

Figure 30. Split screen example

### Splitting the screen horizontally

To split the screen horizontally:

- 1) Move the mouse pointer into the vertical scroll bar, on the right-hand side of the screen, and place it over the small button at the top with the black triangle.

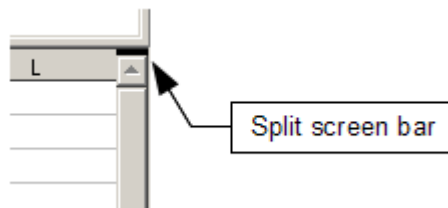


Figure 31. Split screen bar on vertical scroll bar

- 2) Immediately above this button, you will see a thick black line (Figure 31). Move the mouse pointer over this line, and it turns into a line with two arrows (Figure 32).



Figure 32. Split-screen bar on vertical scroll bar with cursor

- 3) Hold down the left mouse button. A gray line appears, running across the page. Drag the mouse downwards and this line follows.
- 4) Release the mouse button and the screen splits into two views, each with its own vertical scroll bar. You can scroll the upper and lower parts independently.

Notice in Figure 30, the Beta and the A0 values are in the upper part of the window and other calculations are in the lower part. Thus, you can make changes to the Beta and A0 values and watch their effects on the calculations in the lower half of the window.

## Tip

You can also split the screen using a menu command. Click in a cell immediately below and to the right of where you wish the screen to be split, and choose **Window > Split**.

## Splitting the screen vertically

To split the screen vertically:

- 1) Move the mouse pointer into the horizontal scroll bar at the bottom of the screen and place it over the small button on the right with the black triangle.

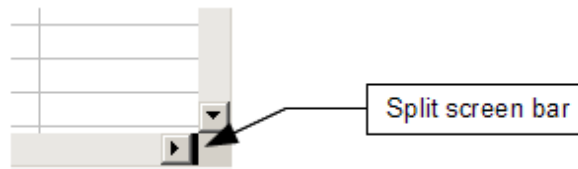


Figure 33: Split bar on horizontal scroll bar

- 2) Immediately to the right of this button is a thick black line (Figure 33). Move the mouse pointer over this line and it turns into a line with two arrows.
- 3) Hold down the left mouse button, and a gray line appears, running up the page. Drag the mouse to the left and this line follows.
- 4) Release the mouse button, and the screen is split into two views, each with its own horizontal scroll bar. You can scroll the left and right parts of the window independently.


## Removing split views

To remove a split view, do any of the following:

- *Double-click* on each split line.
- Click on and drag the split lines back to their places at the ends of the scroll bars.
- Choose **Window > Split** to remove all split lines at the same time.

## Using the Navigator

In addition to the cell reference boxes (labeled Column and Row), the Navigator provides several other ways to move quickly through a spreadsheet and find specific items.

To open the Navigator, click its icon  on the Standard toolbar, or press *F5*, or choose **View > Navigator** on the Menu bar, or *double-click* on the Sheet Sequence Number **Sheet 1 / 3** in the Status Bar. You can dock the Navigator to either side of the main Calc window or leave it floating. (To dock or float the Navigator, hold down the *Control* key and *double-click* in an empty area near the icons at the top.)

The Navigator displays lists of all the objects in a spreadsheet document, grouped into categories. If an indicator (plus sign or arrow) appears next to a category, at least one object of this kind exists. To open a category and see the list of items, click on the indicator.


To hide the list of categories and show only the icons at the top, click the **Contents** icon . Click this icon again to show the list.

Table 2 summarizes the functions of the icons at the top of the Navigator.

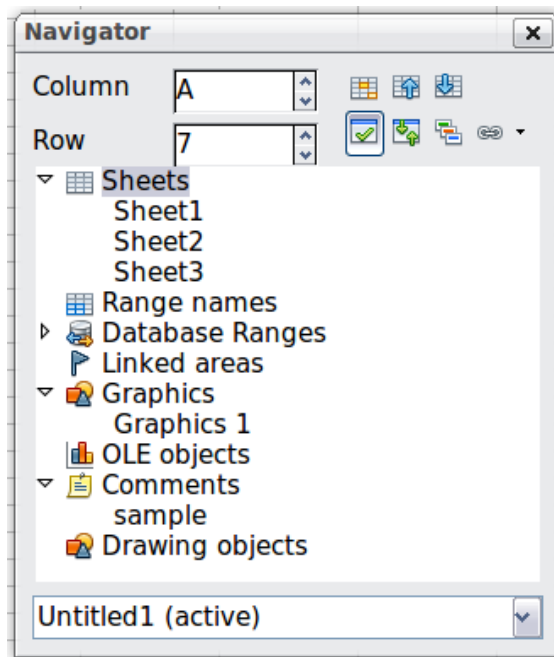


Figure 34: The Navigator in Calc

Table 2: Function of icons in the Navigator

Icon	Action
	<b>Data Range.</b> Specifies the current data range denoted by the position of the cell cursor.
	<b>Start/End.</b> Moves to the cell at the beginning or end of the current data range, which you can highlight using the <b>Data Range</b> button.
	<b>Contents.</b> Shows or hides the list of categories.
	<b>Toggle.</b> Switches between showing all categories and showing only the selected category.
	<b>Scenarios.</b> Displays all available scenarios. <i>Double-click</i> a name to apply that scenario. See Chapter 9, Data Analysis, for more information.
	<b>Drag Mode.</b> Choose hyperlink, link, or copy. See “Choosing a drag mode” for details.

## Moving quickly through a document

The Navigator provides several convenient ways to move around a document and find items in it:

- To jump to a specific cell in the current sheet, type its cell reference in the Column and Row boxes at the top of the Navigator and press the *Enter* key; for example, in Figure 34 the cell reference is A7.
- When a category is showing the list of objects in it, *double-click* on an object to jump directly to that object’s location in the document.
- To see the content in only one category, highlight that category and click the **Toggle** icon. Click the icon again to display all the categories.
- Use the **Start** and **End** icons to jump to the first or last cell in the selected data range.

## Tip

Ranges, scenarios, pictures, and other objects are much easier to find if you have given them informative names when creating them, instead of keeping Calc's default Graphics 1, Graphics 2, Object 1, and so on, which may not correspond to the position of the object in the document.

## Choosing a drag mode

Sets the drag and drop options for inserting items into a document using the Navigator.

### Insert as Hyperlink

Creates a hyperlink when you drag and drop an item into the current document.

### Insert as Link

Inserts the selected item as a link where you drag and drop an object into the current document.

### Insert as Copy

Inserts a copy of the selected item where you drag and drop in the current document. You cannot drag and drop copies of graphics, OLE objects, or indexes.

## Using document properties

To open the Properties dialog for a document, choose **File > Properties**.

The Properties dialog has six tabs. The information on the *General* page and the *Statistics* page is generated by the program. Other information (the name of the person on the Created and Modified lines of the *General* page) is derived from the User Data page in **Tools > Options**.

The *Internet* page is relevant only to HTML documents. The file sharing options on the *Security* page are discussed elsewhere in this book.

Use the *Description* and *Custom Properties* pages to hold:

- Metadata to assist in classifying, sorting, storing, and retrieving documents. Some of this metadata is exported to the closest equivalent in HTML and PDF; some fields have no equivalent and are not exported.
- Information that changes. You can store data for use in fields in your document; for example, the title of the document, contact information for a project participant, or the name of a product might change during the course of a project.

This dialog can be used in a template, where the field names can serve as reminders to users of information they need to include.

You can return to this dialog at any time and change the information you entered. When you do so, all of the references to that information will change wherever they appear in the document. For example, on the *Description* page (Figure 35) you might need to change the contents of the *Title* field from the draft title to the final title.

Use the *Custom Properties* page (Figure 36) to store information that does not fit into the fields supplied on the other pages of this dialog box.

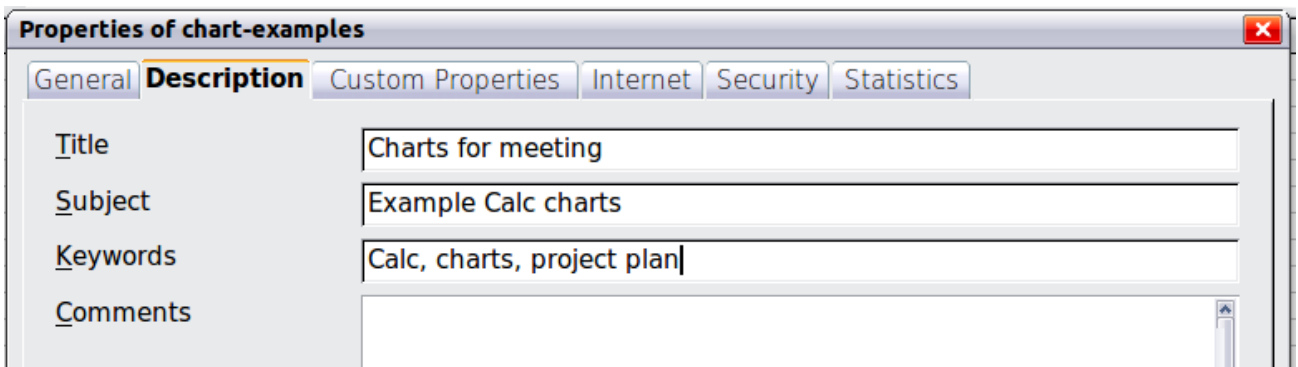


Figure 35: The Description page of the document's Properties dialog

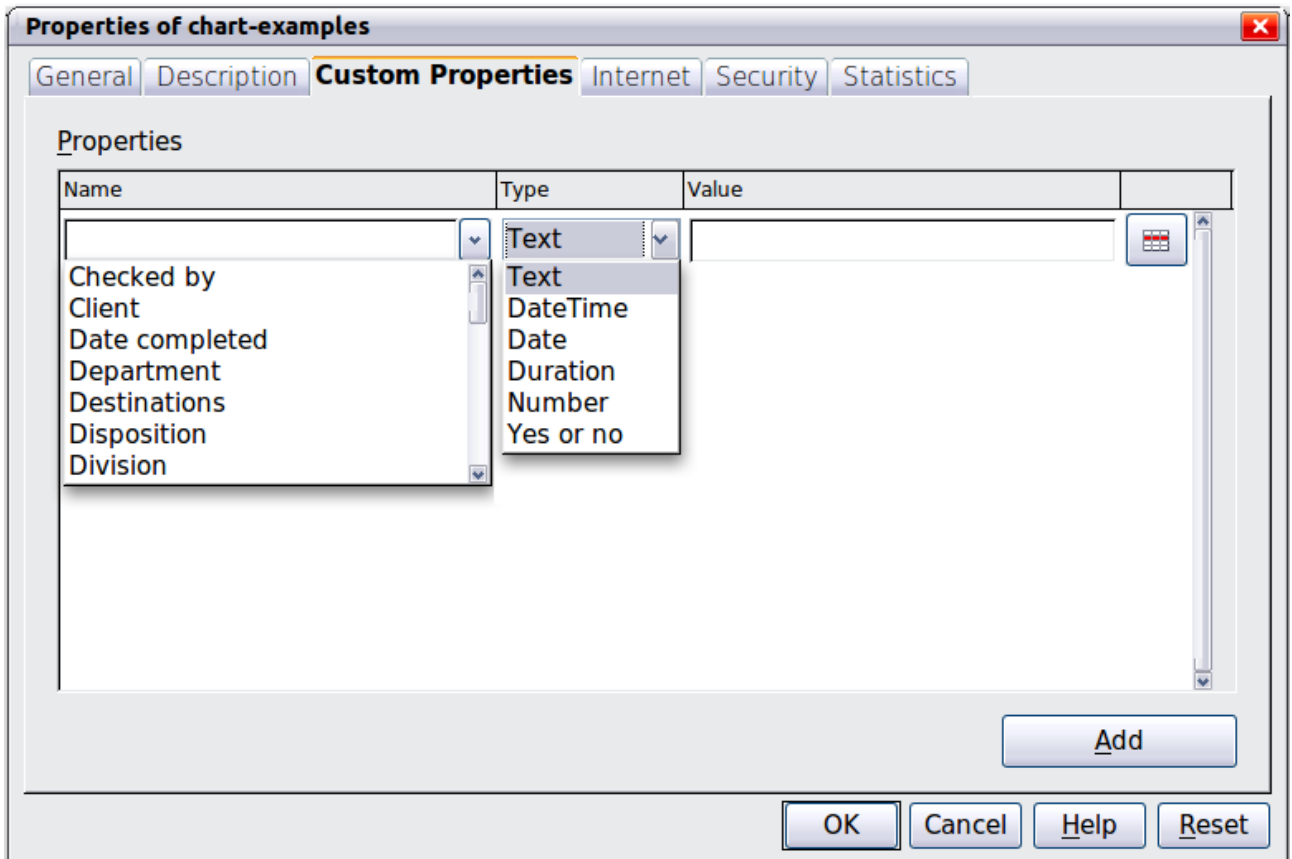


Figure 36: Custom Properties page, showing drop-down lists of names and types

When the Custom Properties page is first opened in a new document, it may be blank. However, if the new document is based on a template, this page may contain fields.

Click **Add** to insert a row of boxes into which you can enter your custom properties.

- The *Name* box includes a drop-down list of typical choices; scroll down to see all the choices. If none of the choices meet your needs, you can type a new name into the box.
- In the *Type* column, you can choose from text, date+time, date, number, duration, or yes/no for each field. You cannot create new types.
- In the *Value* column, type or select what you want to appear in the document where this field is used. Choices may be limited to specific data types depending on the selection in the Type column; for example, if the Type selection is Date, the Value for that property is limited to a date.

To remove a custom property, click the button at the end of the row.

**Tip**

To change the format of the Date value, go to **Tools > Options > Languages** and change the Locale setting. Be careful! This change affects all open documents, not just the current one.