



LibreOffice
Community



Impress Guide 7.3

Chapter 1, Introducing Impress

Presentations in LibreOffice

Contents

Copyright.....	2
Contributors.....	2
Feedback.....	2
Publication date and software version.....	2
Using LibreOffice on macOS.....	2
What is Impress?.....	5
Starting Impress.....	5
Main Impress window.....	7
Menu bar.....	7
Workspace.....	7
Slides pane.....	8
Sidebar.....	8
Properties.....	9
Styles.....	9
Gallery.....	9
Navigator.....	9
Shapes.....	9
Slide transition.....	9
Animation.....	9
Master slides.....	9
Rulers.....	10
Status bar.....	10
Navigator.....	12
Toolbars.....	12
Workspace views.....	14
Normal view.....	14
Outline view.....	15
Notes view.....	15
Slide Sorter view.....	16
Customizing Slide Sorter view.....	16
Changing slide order.....	16
Selecting a group of slides.....	16
Working in Slide Sorter view.....	17
Creating presentations.....	17
New presentation.....	18
Inserting new slide.....	18
Duplicating slides.....	18
Slide format.....	18
Slide layout.....	19
Selecting slide layout.....	19
Changing slide layout.....	20
Slide contents.....	20
Modifying slide elements.....	20
Moving contents box.....	21
Resizing contents box.....	21

Removing elements.....	21
Adding text.....	21
Adding images or objects.....	21
Modifying slide appearance.....	22
Modifying presentations.....	23
Slide order.....	23
Animations.....	23
Slide transitions.....	24
Running a presentation.....	24
Single displays.....	24
Multiple displays.....	24

What is Impress?

Impress is the presentation (slide show) program included in LibreOffice. Impress creates presentations in the Open Document Presentation (ODP) format, which can be opened by other presentation software or can be exported in different presentation formats.

Slides can be created that contain many different elements, including text, bulleted and numbered lists, tables, charts, and a wide range of graphic objects such as clipart, drawings and photographs. Impress also includes a spelling checker, a thesaurus, text styles, and background styles.

This chapter introduces the Impress user interface. The remaining chapters in this user guide explain all the features available in Impress that can be used to create more sophisticated slide shows.

To use Impress for more than very simple presentations requires some knowledge of the elements which the slides contain. Slides containing text use styles to determine the appearance of that text. Creating drawings in Impress is similar to the Draw module included in LibreOffice. It is recommended to consult the *Draw Guide* for more details on how to use the drawing tools.

Starting Impress

Impress can be started in several ways:

- From the LibreOffice Start Center that opens when LibreOffice is opened and no other LibreOffice module is open.
 - Click on **Impress Presentation** to create a new presentation;
 - Click on **Open File** and navigate to the folder where there is an existing presentation.
- From the system menu using the standard menu from which most applications are started. Details vary with the operating system. See the *Getting Started Guide* for more information, some examples are listed below:
 - Start menu in Windows.
 - Applications menu in Linux with a Gnome desktop.
 - Applications menu in macOS.
- From any open module of LibreOffice, go to **File > New > Presentation** on the Menu bar, or click on the triangle ▼ next to **New** on the Standard toolbar and select **Presentation** from the drop-down menu.

Note

When LibreOffice is installed on a computer, a menu entry for each component is normally added to the system menu. The exact name and location of these menu entries depend on the operating system and graphical user interface.

Note

The **New** icon displayed on the Standard toolbar depends on which LibreOffice module is open when creating a new presentation.

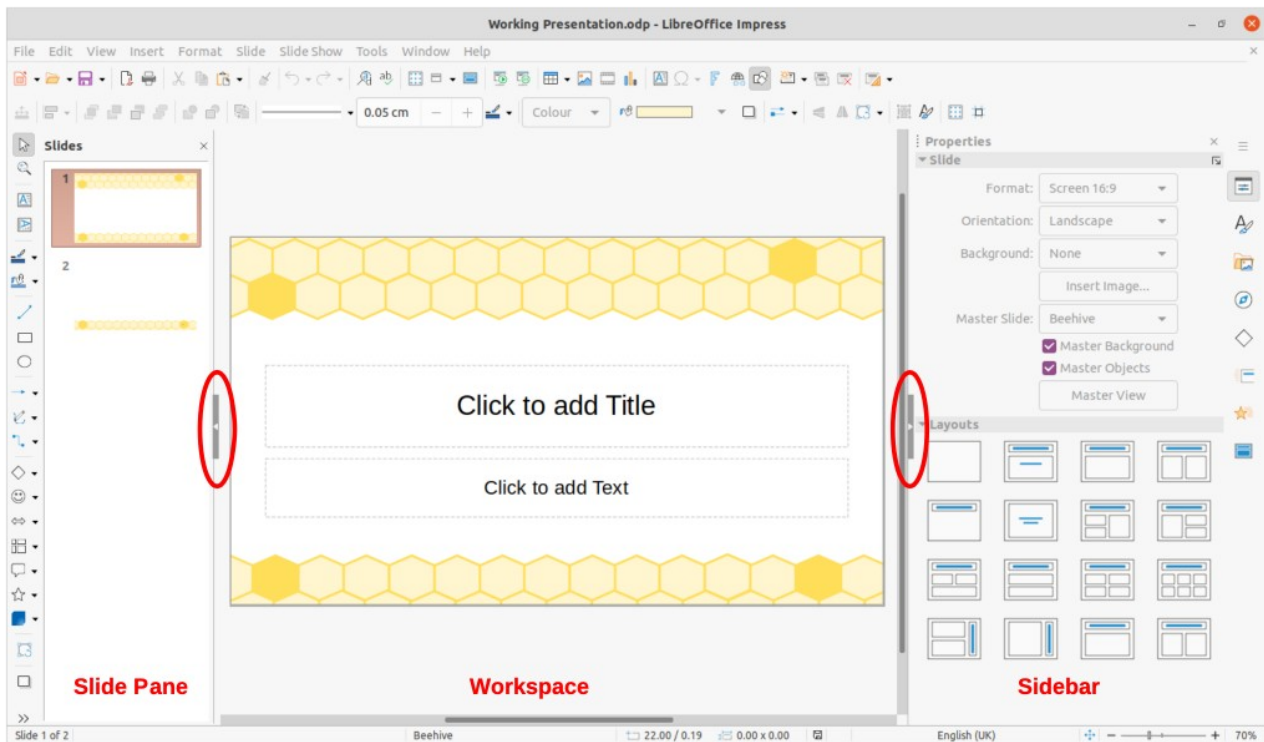


Figure 1: Impress main window

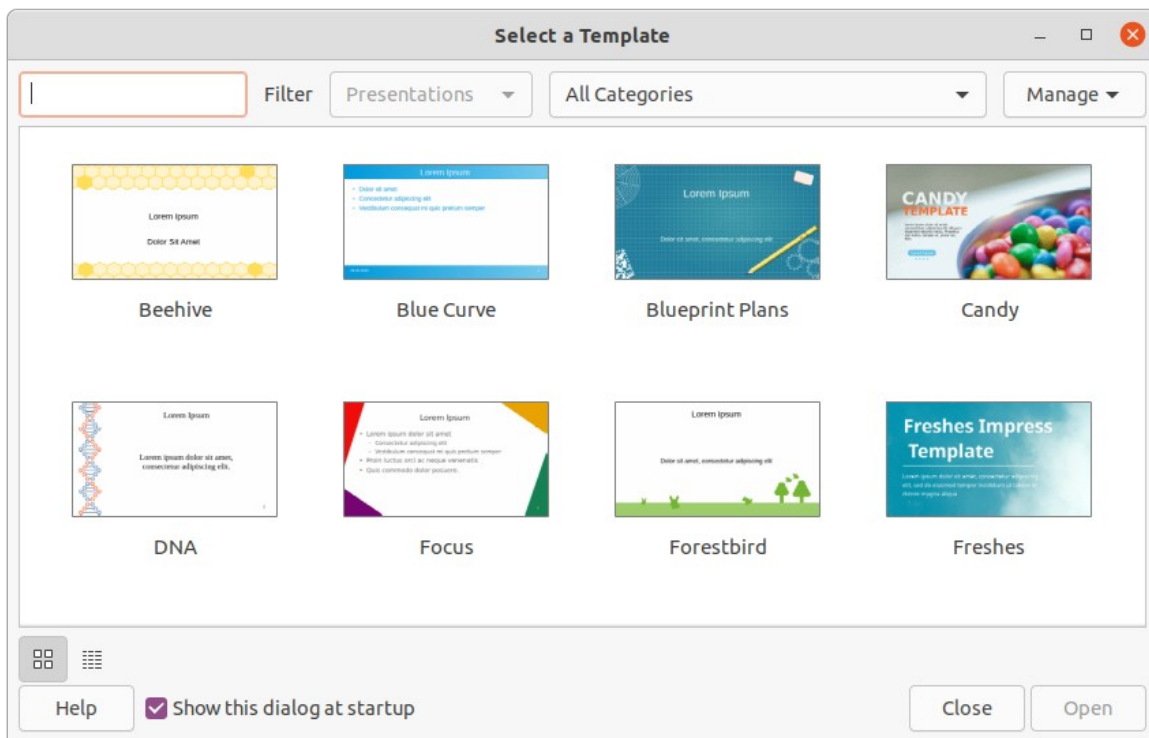


Figure 2: Select a Template dialog

When starting Impress, the main Impress window (Figure 1) opens and, as default, with the Select a Template dialog displayed (Figure 2). Templates included with Impress are designed to fit the two standard sizes of presentation slides: 4:3 and 16:9 ratios. However, templates will adapt to other sizes that are available and can be selected by going to **Slide > Slide Properties > Paper Format** on the Menu bar, or **Format** in the **Slide** panel in the Properties deck on the Sidebar.

Tip

To start Impress without the Select a Template dialog opening, deselect *Show this dialog at startup* in the lower left of the dialog.

In Windows or Linux, go to **Tools > Options > LibreOffice Impress > General** on the Menu bar and deselect *Start with Template Selection* under **New Document**.

In macOS, go to **LibreOffice > Preferences > LibreOffice Impress > General** on the Menu bar and deselect *Start with Template Selection* under **New Document**.

Main Impress window

The main Impress window (Figure 1) has three main sections: Slides pane, Workspace, and Sidebar. At the top of the main window is the Menu bar and toolbars. Toolbars can be displayed or hidden during the creation of a presentation.

Tip

The Slides pane and/or Sidebar can be closed by clicking the X in the upper right corner of each pane, or go to **View > Slides pane** or **View > Sidebar** on the Menu bar to deselect. To reopen a pane, select **View > Slides pane** or **View > Sidebar** on the Menu bar.

Tip

To maximize the Workspace area click on the **Hide/Show** marker in the middle of the vertical separator line (highlighted in Figure 1). Using the **Hide/Show** marker hides, but does not close, the Slides pane or Sidebar. To restore, click again on its **Hide/Show** marker.

Menu bar

The Impress Menu bar, at the top of the main window, provides several menus common to all LibreOffice modules. The commands may differ between each LibreOffice module for **File**, **Edit**, **View**, **Insert**, **Format**, **Tools**, **Window**, and **Help**. Impress has two extra menus for **Slide** and **Slide Show**. When a menu is selected, a submenu drops down to show commands. The Menu bar can be customized and for more information, see the *Getting Started Guide*.

Workspace

The Workspace (normally the center of the main window) opens in the **Normal** view. It has four standard views of **Normal**, **Outline**, **Notes**, and **Slide Sorter** (Figure 3). For more information on workspace views, see “Workspace views” page 14.

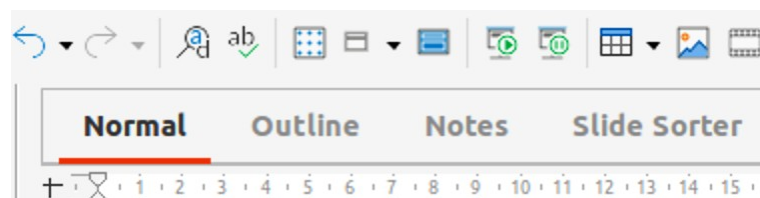


Figure 3: Workspace view tabs

If master slides are being used, then master views become available: **Master Slide**, **Master Notes** and **Master Handout**. There are no tabs for master views and are selected by going to **View** on the Menu bar. For more information on master slides, see Chapter 2, Using Slide Masters, Styles, and Templates.

Slides pane

The Slides pane contains thumbnail images of slides in a presentation in the order in which the slides are shown. The slide show order can be changed and is described in Chapter 9, Slide Shows & Photo Albums. Clicking on a slide image in the Slides pane selects it and places the slide in the Workspace where changes are made to the displayed slide.

- To display or close the Slides pane, go to **View > Slides pane** on the Menu bar.
- To close the Slides pane, click on the X in the right top corner of the Slides pane.
- To display or hide the Slides pane, use the **Hide/Show** marker on the left of the Workspace.

Several additional operations can be carried out on one or more slides in the Slides pane. Also, these additional operations are available from a context menu when right-clicking on a slide in the Slides pane.

- Add new slides to a presentation.
- Hide a slide so that it will not show in a presentation.
- Delete a slide from a presentation.
- Rename a slide.
- Duplicate a slide.
- Move a slide to another position in the slide order by dragging and dropping it to the desired position.
- The following operations can also be carried out, although there are more efficient methods than using the Slides pane:
 - Change the slide transition following the selected slide or after each slide in a group.
 - Change the sequence of slides in the presentation.
 - Change the slide design.
 - Change slide layout for a group of slides simultaneously.

Sidebar

The Impress Sidebar, normally located on the right side of the Workspace, is similar to the Sidebar in the other LibreOffice modules. It consists of eight decks, as described below. To open a deck, use one of the following methods:

- Click on its icon on the right side of the Sidebar.
- Click on **Sidebar Settings** at the top of the Sidebar and select a deck from the drop-down list.
- Go to **View** on the Menu bar and select the deck required from the submenu.

To display or hide the Sidebar, use one of the following methods:

- Go to **View > Sidebar** on the Menu bar.
- Use the keyboard shortcut *Ctrl+F5* (macOS *⌘+F5*).
- Use the **Hide/Show** marker on the right of the Workspace (Figure 1 on page 6).
- To close the Sidebar, click on the X in the right top corner of the Sidebar.

- To display the Sidebar, click on one of the Sidebar icons to open a deck.

Properties

The Properties deck has ten panels, allowing the slide layout to be changed and the formatting of any objects on a slide.

- When a slide is selected and appears in the Workspace, the Properties deck opens with the **Slide** and **Layouts** panels available.
- When an object on a slide is selected, the Properties deck has the following panels available: **Character**, **Lists**, **Paragraph**, **Area**, **Shadow**, **Line**, **Position and Size**, **Columns**, **Effect**, and **Image**. Actual panels displayed depends on the type of object selected.

Styles

On the Styles deck, drawing and presentation styles can be applied to a selected object, new styles created for drawing and presentation, and both types of styles can be modified. When saving changes to a style, the changes are applied to all of the elements formatted with that style in the presentation. For more information on styles, see Chapter 2, Using Slide Masters, Styles, and Templates.

Gallery

On the Gallery deck, an object can be inserted into a presentation either as a copy or as a link. A copy of an object is independent of the original object. Changes to the original object have no effect on the copy. A link remains dependent on the original object. Changes to the original object are also reflected in the link.

Navigator

The Navigator deck displays all objects contained in a presentation. It provides a convenient way to move between slides in a presentation or select an object on a slide. It is recommended to give slides and objects in a presentation meaningful names for easy identification when using the Navigator. For more information, see “Navigator” on page 12.

Shapes

The Shapes deck provides panels for quick selection of most items that are available on the Drawing toolbar: **Lines and Arrows**, **Curves and Polygons**, **Connectors**, **Basic Shapes**, **Symbol Shapes**, **Block Arrows**, **Flowchart**, **Callout Shapes**, **Stars and Banners**, and **3D Objects**.

Slide transition

The Slide Transition deck provides a selection of slide transitions available in Impress. Also there are controls to adjust transition speed, automatic or manual transition, and how long a selected slide is shown (automatic transition only). For more information on transitions, see Chapter 9, Slide Shows & Photo Albums.

Animation

The Animation deck provides an easy way to add, change, or remove animations for different elements or objects on a slide and adjust how they appear during a slide show. For more information on animation, see Chapter 9, Slide Shows & Photo Albums.

Master slides

Using the Master Slides deck, the slide design can be selected for a presentation. Impress includes several designs of master slides. The default master slide is blank, but the remaining master slides have backgrounds and styled text. For more information on master slides, see Chapter 2, Using Slide Masters, Styles, and Templates.

Rulers

Rulers are positioned on the upper and left-hand sides of the Workspace. If the rulers are not visible, go to **View > Rulers** in the Menu bar. Rulers show the size of a selected object on the slide using double lines (highlighted in Figure 4). Also, rulers are used to manage object handles and guide lines when positioning objects.

To change the measurement units of the rulers, right-click on a ruler and select the measurement unit from the drop-down list, as shown in Figure 5 for the horizontal ruler. The horizontal and vertical rulers can be set to different measurement units.

The page margins in the drawing area are also represented on the rulers. The margins can be changed directly on the rulers by dragging them with the cursor. The margin area is indicated by either a grayed out area on the rulers or borders around the unused area of the ruler. This margin indication depends on computer setup and operating system.

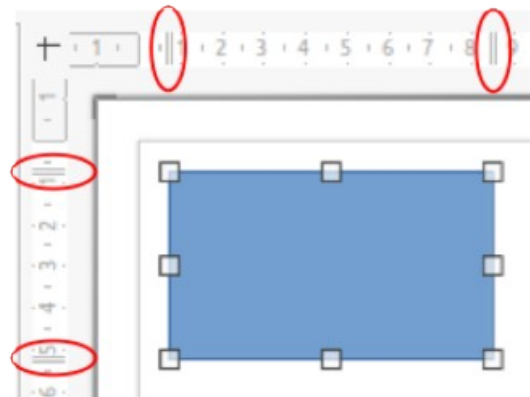


Figure 4: Rulers showing object size

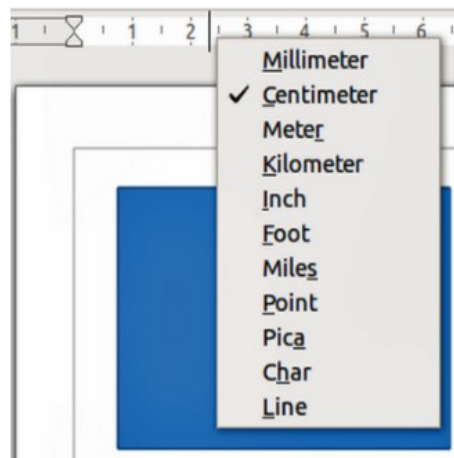


Figure 5: Changing ruler units

✓ Note

The sizes are given in the current measurement unit and might not be the same as the ruler units. The measurement unit on the Status bar is defined in **Tools > Options > LibreOffice Impress > General**.

Status bar

The Status Bar (Figure 6), located at the bottom of the Impress main window, contains information that may be useful when working on a presentation. To hide the Status Bar, go to **View** on the Menu bar and deselect **Status Bar**.

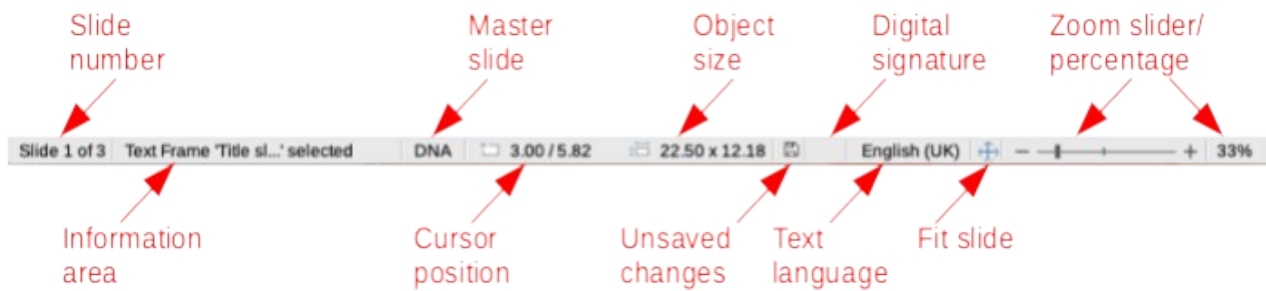


Figure 6: Status Bar

Slide number

The slide number currently displayed in the Workspace and the total number of slides in the presentation.

Information area

This changes depending on the object selected on the slide. Examples of the information displayed are shown in Table 1.

Table 1: Examples of information on Status Bar

Example selection	Examples of information shown
Text area	Text Edit: Paragraph x, Row y, Column z
Charts, spreadsheets	Embedded object (OLE) "ObjectName" selected
Graphics	Bitmap with transparency selected

Master slide

The master slide associated with the slide or notes page currently displayed in the Workspace. Right-click to open a list of available master slides and select one to apply it to the selected slide. Double-click to open the Available Master Slides dialog. For more information on master slides, see Chapter 2, Using Slide Masters, Styles and Templates.

Cursor position/Object size

Shows different information depending on whether objects are selected or not.

- When no object is selected, the position numbers show the current position (X and Y coordinates) of the cursor.
- When an object is selected and being resized with the cursor, the object size numbers show the size of the object (width and height).
- If an object is selected, the position numbers shows X and Y coordinates of the upper-left corner and the object size number pair displays the size of the object. These numbers do not relate to the object itself, but to the selection outline, which is the smallest possible rectangle that can contain the visible part or parts of the object.
- When an object is selected, clicking in either of these areas opens the Position and Size dialog.

Unsaved changes

Indicates if there are any unsaved changes in the presentation. Clicking this icon saves the document. If the presentation has not been saved before, the Save As dialog opens giving the opportunity to save the presentation.

Digital signatures

Indicates if the presentation has a digital signature.

Text language

Indicates the language used for any text on a presentation.

Fit slide

When this icon is clicked on, the slide in the Workspace zooms to fit in the Workspace.

Zoom slider

When moved, the slide changes its viewing zoom in the Workspace.

Zoom percentage

Indicates the zoom level of the slide displayed in the Workspace. Clicking on zoom percentage opens the Zoom & View Layout dialog where the settings for zoom factor and view layout are adjusted.

Navigator

The Navigator displays all objects contained in a presentation. It provides another convenient way to move around a presentation and find items in it.

To open the Navigator dialog (Figure 7) go to **View > Navigator** on the Menu bar, or use the keyboard shortcut *Ctrl+Shift+F5* (macOS *⌘+Shift+F5*). Alternatively, click on **Navigator** in the Sidebar to open the Navigator deck that is similar in appearance and function as the Navigator dialog.

The Navigator is more useful if slides and objects (pictures, spreadsheets, and so on) are given meaningful names, instead of leaving them with default names, such as “Slide 1” and “Shape 1” and so on (as shown in Figure 7). Using meaningful names allows for slides or objects to be easily identified and located in a presentation.

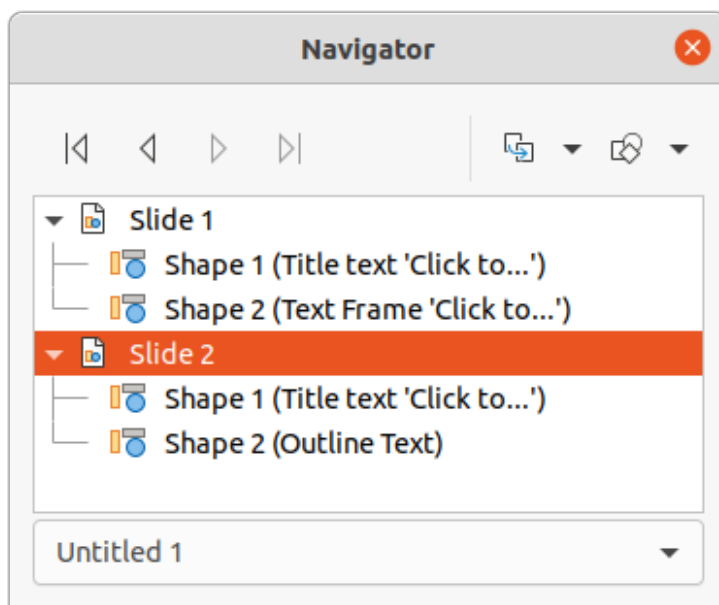


Figure 7: Navigator dialog

Toolbars

Many toolbars can be used during slide creation. To display or hide the various toolbars in Impress, go to **View > Toolbars** on the Menu bar and select the required toolbar from the submenu that appears. For example, Standard and Drawing toolbars are displayed by default, but the Line and Filling, and Text Formatting toolbars are not displayed and have to be selected.

To change the tools available on any toolbar, right-click in an empty area on the toolbar and select **Visible Buttons** from the context menu. Installed tools are indicated by a check mark next to the tool name, or the tool icon is highlighted, depending on the computer operating system. Click on a tool name to hide or show it in the toolbar. For more information, see Chapter 11, Setting Up and Customizing Impress, Appendix B, Toolbars, and the *Getting Started Guide*.

✓ Note

The appearance of the toolbar icons varies depending on the computer operating system, and the selection of icon size and style in **Tools > Options > LibreOffice > View**. For more information about working with toolbars, see Appendix B, Toolbars and the *Getting Started Guide*.

The following toolbars are widely used when creating a presentation:

Standard toolbar

The Standard toolbar (Figure 8) is the same for all LibreOffice modules and is not described in detail in this user guide. By default, it is docked and located just under the Menu bar at the top of the Workspace.

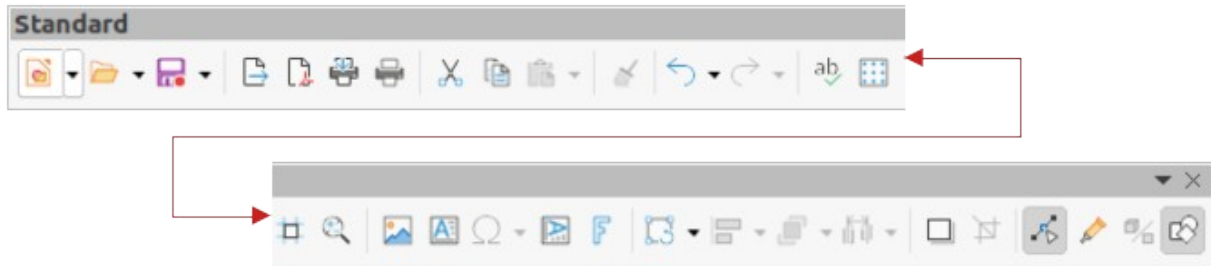


Figure 8: Standard toolbar

Drawing toolbar

The Drawing toolbar (Figure 9) contains all the necessary functions for drawing various geometric and freehand shapes, and for organizing them in a slide. By default, it is docked and located on the left of the Workspace. More information on the Drawing toolbar can be found in Chapter 5, Managing Graphic Objects.



Figure 9: Drawing toolbar

Line and Filling toolbar

The Line and Filling toolbar (Figure 10) provides the tools for modifying the properties of an object, for example line color, line style, line width, fill color and style, and other properties of a selected object. If the selected object is a text frame, the Line and Filling toolbar is automatically replaced by the Text Formatting toolbar (Figure 11).

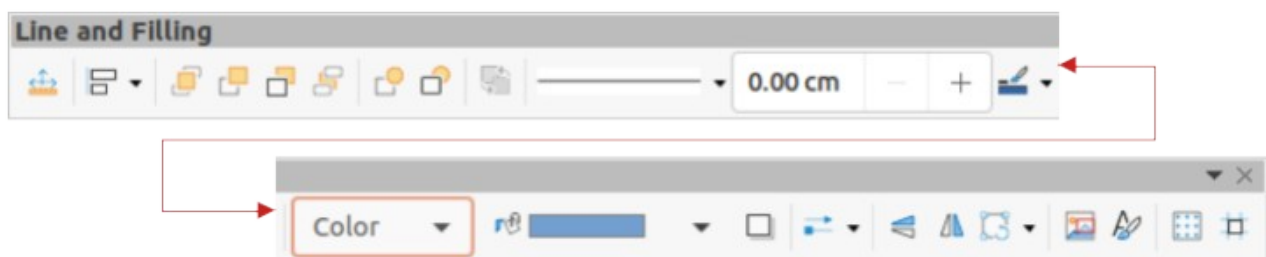


Figure 10: Line and Filling toolbar

Text Formatting toolbar

The Text Formatting toolbar (Figure 11) is similar to the Formatting toolbar in LibreOffice Writer and only appears when a text object has been selected in a presentation, automatically replacing the Line and Filling toolbar (Figure 10).

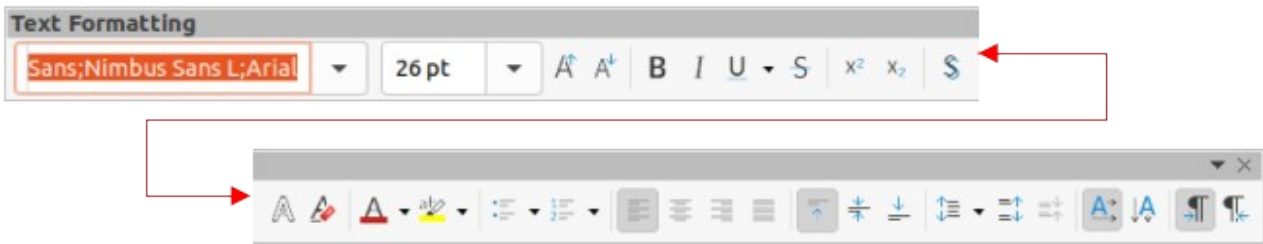


Figure 11: Text Formatting toolbar

Workspace views

The Impress workspace has four standard views selected using tabs: **Normal**, **Outline**, **Notes**, and **Slide Sorter**. These tabs are normally displayed the top of the Workspace. If the tabs are not displayed, then go to **View > Views Tab Bar** on the Menu bar. Also, different workspace views can be selected by going to **View** on the Menu bar and selecting a view from the submenu. Each of the workspace views is designed to ease the completion of certain tasks.

Master views only become available in the Workspace when **Master Slide**, **Master Notes** or **Master Handout** are selected. There are no tabs for master views and can only be selected by going to **View** on the Menu bar. For more information on master slides, see Chapter 2, Using Slide Masters, Styles, and Templates.

✓ Note

Each workspace view displays a different set of toolbars when selected. To customize these toolbar sets, go to **View > Toolbars** on the Menu bar, then check or uncheck the toolbars to add or remove.

Normal view

Normal view is the main standard view for creating individual slides in a presentation. In **Normal** view slides are designed, text or graphics added and formatted, and any animation effects added to text or graphics.

To place a slide in **Normal** view of the Workspace, either click on the slide thumbnail in the Slides pane or click on the slide name in the Navigator.

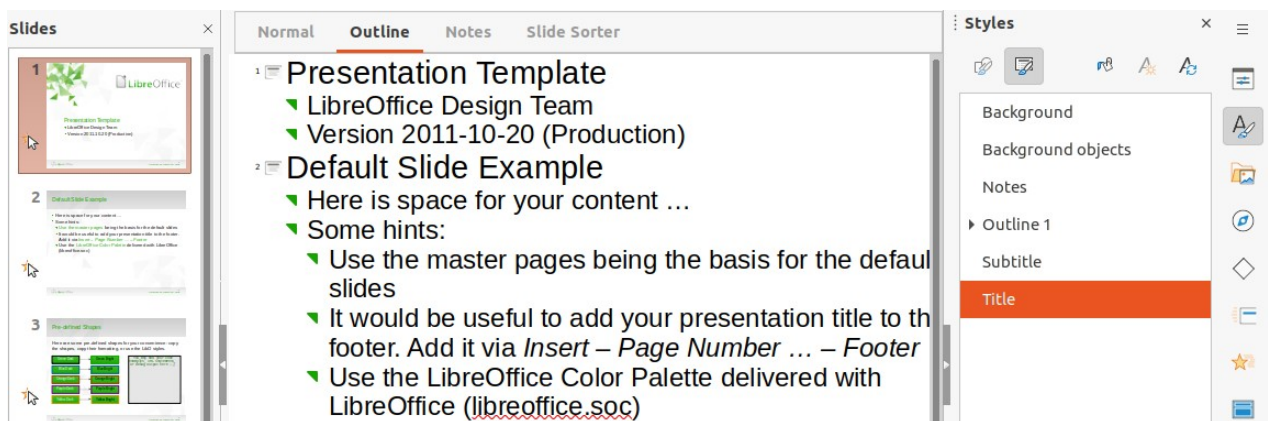


Figure 12: Example of Outline view in Workspace

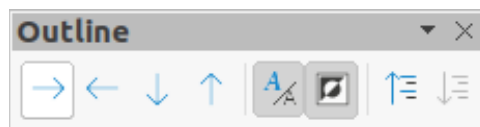


Figure 13: Outline toolbar

Outline view

Outline view in the Workspace (Figure 12) contains all of the slides of a presentation in a numbered sequence. It shows topic titles, bulleted lists, and numbered lists for each slide in outline format. Only the text contained in the default text boxes in each slide is shown. If text boxes or graphic objects have been added to the slides, then these objects are not displayed. Slide names are not included.

Outline view can be used for the following:

- Making changes in the text of a slide.
- Adding or deleting text in a slide as in **Normal** view.
- Moving a paragraph in a slide up or down by using the movement arrows on the Outline toolbar (Figure 13).
- Changing the outline level of a paragraph in a slide using the left and right arrow buttons on the Outline toolbar.
- Comparing slides with an outline, if an outline has been prepared in advance. If another slide is required, it can be created directly in **Outline** view, or **Normal** view.

Notes view

Use **Notes** view in the Workspace (Figure 14) to add notes to a slide. These notes are not seen when the presentation is shown to an audience using an external display connected to a computer.

- 1) Click on **Notes** in the Workspace to open **Notes** view.
- 2) Click a slide in the Slides pane so that the slide appears in the Workspace.
- 3) In the text box below the slide, click on the words *Click to add notes* and begin typing the required notes for the selected slide.

The *Click to add notes* text box can be resized using the resizing handles which appear when the edge of the notes box is selected. Move or change the size of the box by clicking and dragging on the box border.

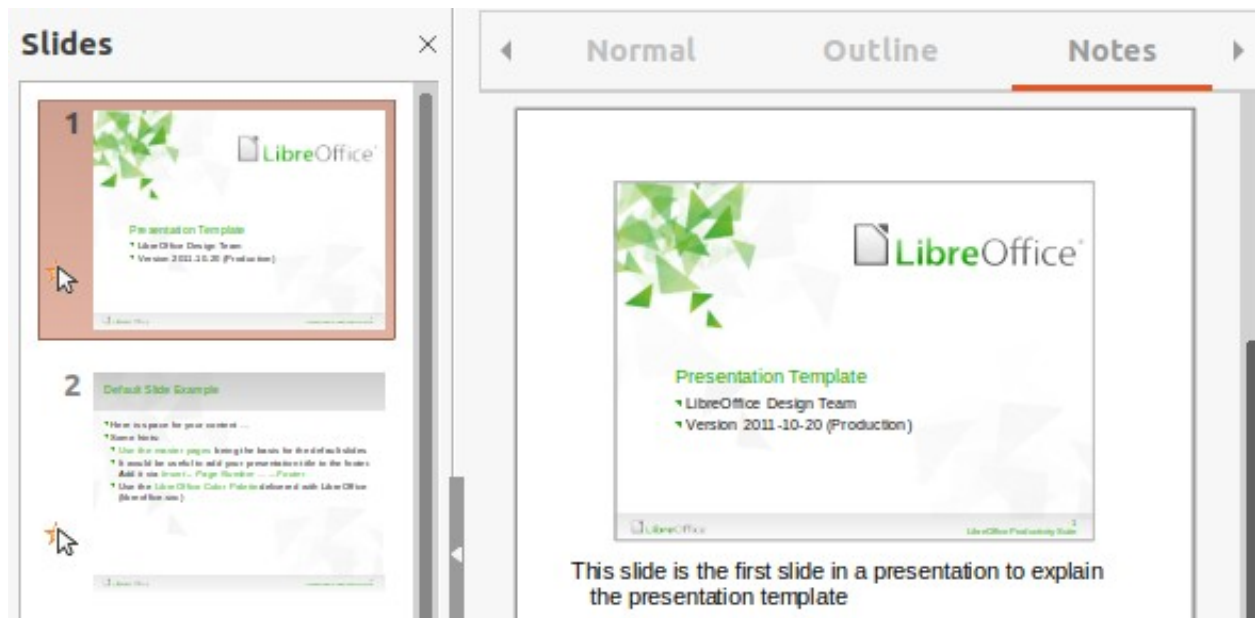


Figure 14: Example of Notes view in Workspace

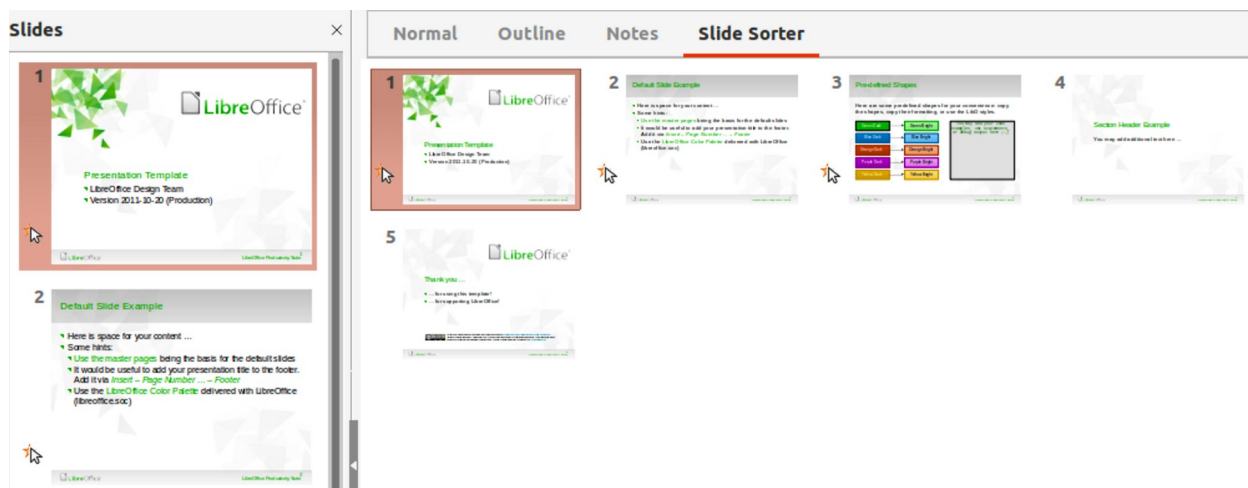


Figure 15: Example of Slide Sorter view in Workspace

When text is inserted in the *Click to add notes* text box, it is automatically formatted using the predefined *Notes* style in **Presentation Styles** in the Styles deck on the Sidebar. The *Notes* style can be formatted to the presentation requirements. For more information, see Chapter 8, Adding and Formatting Slides, and Notes.

Slide Sorter view

The **Slide Sorter** view in the Workspace (Figure 15) contains all the thumbnails of slides used in a presentation. Use this view to work with one slide or a group of slides.

Customizing Slide Sorter view

To change the number of slides per row in **Slide Sorter** view:

- 1) Go to **View > Toolbars > Slide View** on the Menu bar to show the Slide View toolbar (Figure 16).
- 2) Adjust the number of slides in the *Slides per Row* box, up to a maximum of 15.

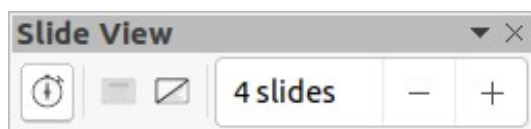


Figure 16: Slide View toolbar

Changing slide order

To change the slide order in a presentation of a single slide or a group of slides using **Slide Sorter** view is as follows:

- 1) Select a slide or a group of slides.
- 2) Drag and drop the slide or group of slides at the new position in the presentation.

Selecting a group of slides

To select a group of slides in **Slide Sorter** view, use one of the following methods:

- **Ctrl** key – click on the first slide and, while holding the **Ctrl** key (macOS ⌘), select the required slides. The selected slides do not have to be next to each other.
- **Shift** key – click on the first slide, and while pressing the **Shift** key, select the final slide for the group. This selects all of the slides between the first and the last slide selected.
- **Cursor** – position the cursor slightly to one side and outside the first slide, then click and hold dragging the cursor until all of the slides required for the group are selected.

Working in Slide Sorter view

Working with slides in **Slide Sorter** view is similar to working with slides in the Slides pane. To make changes, right-click on a slide in **Slide Sorter** view and choose one of the following from the context menu:

- **Cut** – removes the selected slide and saves it to the clipboard.
- **Copy** – copies the selected slide to the clipboard without removing it.
- **Paste** – inserts a slide from the clipboard after the selected slide.
- **New Slide** – adds a new slide after the selected slide.
- **Duplicate Slide** – creates a duplicate of the selected slide and places the new slide immediately after the selected slide.
- **Rename Slide** – renames the selected slide.
- **Hide Slide** – any slides that are hidden are not shown in the presentation.
- **Delete Slide** – deletes the selected slide.
- **Layout** – allows changes to the layout of the selected slide.
- **Move** – allows moving or repositioning of the slide in the presentation order.

Creating presentations

By default, Impress opens with the Select a Template dialog displayed to select a template for a new presentation. To create a new presentation without a template, click on **Cancel** in the Select a Template dialog and a blank slide opens in the Workspace and Slides pane.

To prevent the Select a Template dialog from opening, go to **Tools > Options > LibreOffice Impress > General** on the Menu bar to open Options LibreOffice Impress General dialog (Figure 17) and deselect the option *Start with Template Selection*.

For more information on creating presentations, slide show options, and presentation settings, see Chapter 9, Slide Shows & Photo Albums and Chapter 11, Setting Up and Customizing Impress.

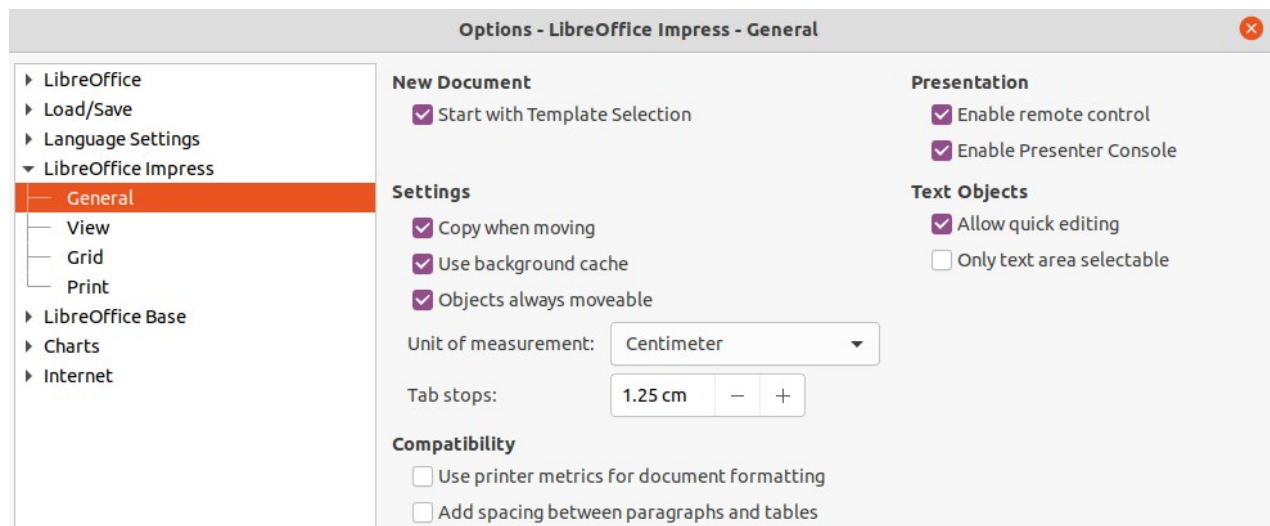


Figure 17: Options LibreOffice Impress General dialog

Tip

The first thing to do is decide on the purpose of a presentation and plan accordingly. Having an idea of the audience type, the structure, the content, and how the presentation will be delivered, will save a lot of time from the start.

New presentation

When creating a new presentation, Impress shows only one slide in the Slides pane and Workspace.

Inserting new slide

A new slide is inserted into a presentation using one of the following methods.

- Go to **Slide > New Slide** on the Menu bar.
- Right-click in the Slides pane and select **New Slide** from the context menu.
- Use the keyboard shortcut *Ctrl+M* (macOS *⌘+M*)
- Go to **Slide Sorter** view in the Workspace, right-click on a slide and select **New Slide** from the context menu.
- Click on **New Slide** in the Presentation toolbar (Figure 18). If the Presentation toolbar is not visible, go to **View > Toolbars** on the Menu bar and select **Presentation** from the drop-down list.

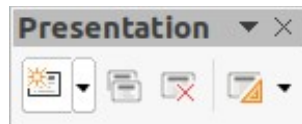


Figure 18:
Presentation toolbar

Note

A new slide is inserted after the selected slide in the presentation. If a slide is not selected, then the new slide is inserted as the last slide in the presentation.

Duplicating slides

To duplicate a slide, select a slide for duplication in the Slides pane and use one of the following methods. A duplicate slide is inserted after the selected slide in the presentation.

- Right-click on a slide in the Slides pane and select **Duplicate Slide** from the context menu.
- Go to **Slide Sorter** view in the Workspace, right-click on a slide and select **Duplicate Slide** from the context menu.
- Go to **Slide > Duplicate Slide** on the Menu bar.
- Click on **Duplicate Slide** on the Presentation toolbar.

Slide format

Click on **Properties** on the Sidebar and open the **Slide** panel (Figure 19) to display the format options available for a presentation. The **Slide** panel allows for quick formatting of all slides included in a presentation and selecting master slides for a presentation. For more information on formatting slides and using master slides, see Chapter 2, Using Slide Masters, Styles, and Templates and Chapter 8, Adding and Formatting Slides and Notes.

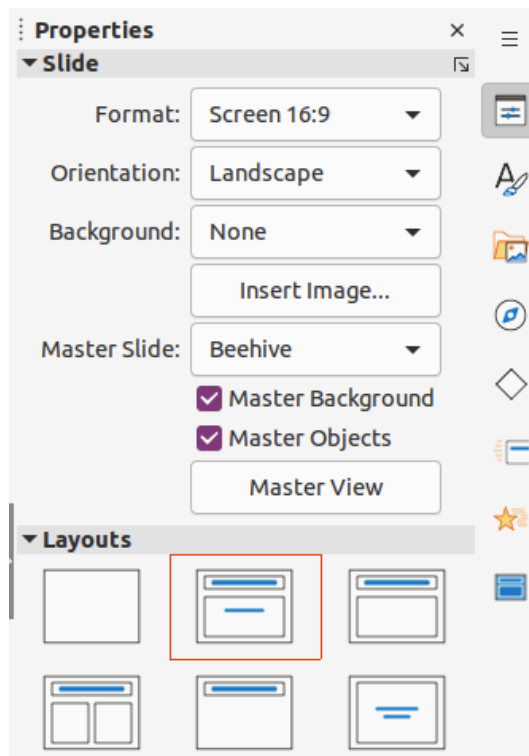


Figure 19: Slide and Layouts panels in Properties deck on Sidebar

Slide layout

By default in Impress, the *Title Slide* layout is used for the first slide when a new presentation is created. The layouts included in Impress range from a blank slide to a slide with six contents boxes and a title. For more information on slide layouts, see Chapter 8, Adding and Formatting Slides, and Notes.

The first slide in a presentation is normally a title slide. The layouts *Title Slide*, which also contains a section for a subtitle, or *Title Only* are the most suitable layouts for the first slide in a presentation. For the remaining slides, select the most suitable layout to use for the slide contents..

Impress does not have the functionality to create custom layouts. However, the different elements in a slide layout can be resized and moved. For more information, see “Modifying slide elements” on page 20.

Selecting slide layout

The available layouts are shown in the **Layouts** panel on the Properties deck on the Sidebar. After selecting a slide, select the slide layout using one of the following methods:

- Go to the Properties deck on the Sidebar to open the **Layouts** panel (Figure 19).
- Click on **Slide Layout** on the Presentation toolbar to open the **Layouts** panel on the Properties deck on the Sidebar.
- Click on **Slide > Layout** on the Menu bar to open a drop-down list showing the layouts by name.
- Right-click on the selected slide and select **Layouts** in the context menu.

Changing slide layout

After selecting a slide in a presentation, change the slide layout using one of the following methods:

- 1) Select a slide in the presentation.
- 2) Select a new layout for the slide using one of the methods described in “Selecting slide layout” above.

Slide contents

Several layouts can contain one or more content boxes. Each of these content boxes can be configured to contain the following elements:

- **Slide title** – click on *Click to add Title* and type a title in the text box. Impress enters text editing mode and the Text Formatting toolbar automatically opens. For more information on formatting text, see Chapter 3, Adding and Formatting Text.
- **Text** – click on *Click to add Text* and type the contents into the text box. Impress enters text editing mode and the Text Formatting toolbar automatically opens. For more information on formatting text, see Chapter 3, Adding and Formatting Text.
- **Table** – go to **Insert > Table** on the Menu bar and the Insert Table dialog opens. Enter the number of columns and rows, then click **OK**. The dialog closes and a table is inserted into the slide. Impress enters text editing mode and the Text Formatting toolbar automatically opens. For more information on using tables, see Chapter 3, Adding and Formatting Text.
- **Chart** – go to **Insert > Chart** on the Menu bar and the Impress default chart is placed in the slide. The **Chart Type** panel opens in the Properties deck on the Sidebar allowing editing of the chart to the presentation requirements. For more information on using charts, see Chapter 7, OLE, Spreadsheets, Charts, and Other Objects.
- **Image** – go to **Insert > Image** on the Menu bar and a file browser opens. Navigate to where the required image is located. Select the file and click on **Open**. The image is placed into the slide and the file browser closes. The **Image** panel opens in the Properties deck on the Sidebar allowing editing of the image file. For more information on using images, see Chapter 4, Adding and Formatting Images, and Chapter 7, OLE, Spreadsheets, Charts, and Other Objects.
- **Audio or video** – go to **Insert > Audio or Video** on the Menu bar and a file browser opens. Navigate to where the required audio or video file is located. Select the file and click on **Open**. The audio or video file is placed into the slide and the file browser closes. The Media Playback toolbar opens allowing operation of the audio or video file. For more information, see Chapter 7, OLE, Spreadsheets, Charts, and Other Objects.

Note

Text and graphic elements can be readjusted at any time during the preparation of a presentation. However, changing slide layout that already has contents can have a dramatic effect. If the layout is changed after contents have been added, the contents are not lost, but they may need to be reformatted.

Modifying slide elements

When a slide is inserted into a presentation, it contains elements that were included in the selected slide layout. However, it is unlikely that the predefined layouts will suit all requirements for a presentation. Elements required maybe removed or objects inserted such as text and/or graphics.

Although Impress does not have the functionality to create new layouts, it allows for the resizing and moving of the slide elements. It is also possible to add slide elements without being limited to the size and position of content boxes.

Note

It is recommended that changes to slide elements in the layouts included in Impress are only made using **Normal** view, which is the default. Attempting any changes to a slide element when in **Master** view is possible, but may result in unpredictable results and requires extra care as well as a certain amount of trial and error.

Moving contents box

- 1) Click on the outer frame of the contents box so that the selection handles are displayed.
- 2) Place the cursor on the frame so that the cursor changes shape. This is normally a clenched hand, but depends on the computer setup and operating system.
- 3) Click and drag the contents box to its new position on the slide, then release.

Resizing contents box

- 1) Click on the outer frame so that the selection handles are displayed.
- 2) Place the cursor on a selection handle the frame so that the cursor changes shape.
- 3) Click and drag the selection handle on the frame to resize the contents box, then release.
 - Top and bottom selection handles change the height of a contents box.
 - Left and right selection handles change the width of a contents box.
 - Corner selection handles change width and height of a contents box.

Removing elements

- 1) Click a contents box or an element to highlight it and the selection handles are displayed.
- 2) Press the *Delete* (macOS *Ctrl+D*) or *Backspace* key to remove the contents box or element.

Adding text

There are two ways of adding text to a slide – contents box or text box. For more information on text, see Chapter 3, Adding and Formatting Text.

- **Contents box** – click *Click to add Text* in the contents box and type the text. Outline styles are automatically applied to the text as it is inserted. If required, change the outline level of each paragraph as well as its position within the contents box by using the arrow buttons on the Outline toolbar and Workspace **Outline** view.
- **Text box** – click on **Insert Text Box** on the Standard toolbar or Drawing toolbar to select text mode, then click on the slide. A text box is created and the Text Formatting toolbar automatically opens. Type the text and click outside the text box to end text mode.

Adding images or objects

To add images or objects to a slide, for example a picture, clipart, drawing, photograph, or spreadsheet, click on **Insert** on the Menu bar and select in the drop-down menu the image or object type required. For more information on adding objects, see the following chapters:

- Chapter 4, Adding and Formatting Images
- Chapter 5, Managing Graphic Objects
- Chapter 6, Formatting Graphic Objects

- Chapter 7, OLE, Spreadsheets, Charts, and Other Objects

Modifying slide appearance

To change the background and other characteristics of all slides in the presentation, the master slide has to be modified or a different master slide selected.

A master slide has a specified set of characteristics that acts as a template and is used as the starting point for creating other slides. These characteristics include slide background, objects in the background, formatting of any text used, and any background graphics.

Impress has a range of master slides, found in the Master Slides deck on the Sidebar. Additional master slides can be created or and saved, or added from other sources. See Chapter 2, Using Slide Masters, Styles, and Templates for information on creating and modifying master slides.

For example, to change the background of an individual slide or a master slide:

- 1) Right click on a slide or master slide and select **Slide Properties** from the context menu to open the Slide Properties dialog (Figure 20).
- 2) Select **Background** and then select the type of background to use from *None*, *Color*, *Gradient*, *Bitmap*, *Pattern* and *Hatch*.
- 3) Make a selection from the various properties available for each type of background.
- 4) Click **OK** to apply save the changes and close the dialog.

✓ Note

Inserting and correctly formatting background is beyond the scope of this chapter. For more information, see Chapter 6, Formatting Graphic Objects.

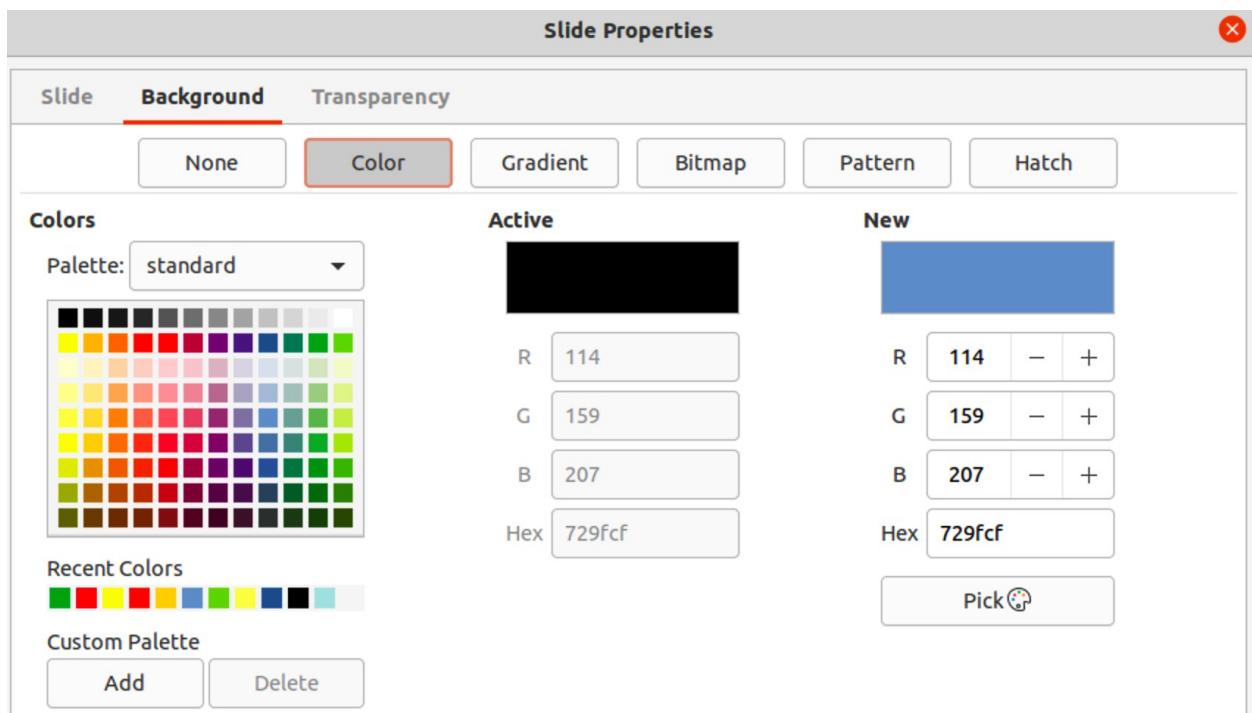


Figure 20: Slide Properties dialog - Background page

Modifying presentations

By default, a presentation displays all the slides in the same order as they appear in **Slide Sorter** view on the Workspace. It is recommended to review the entire presentation and answer some questions. Run the presentation at least once (see “Running a presentation” on page 24), then answer the following questions. Also there maybe more questions after running a presentation for the first time.

- Are the slides in the correct order? If not, some of the slides have to be moved.
- Is the information well spaced and visible to members of an audience at the back of a large room? The audience may not be able to see information at the bottom of a slide, so redesign the presentation to fit the top three-quarters of a screen.
- Would an additional slide make a particular point clearer? If so, create another slide.
- Are some of the slides unnecessary? Hide or delete the slides not required.
- Would animations help some of the slides? This is considered an advanced technique.
- Should some of the slides have a different slide transition than others? The transition of those slides should be changed.

Once the questions have been answered, make the necessary changes. Making changes can be carried out in **Slide Sorter** view on the Workspace.

Tip

If one or more slides seem to be unnecessary, hide the slide or slides, and view the slide show a few more times to make sure they are not required. To hide a slide, right-click the slide in the Slides pane and select **Hide Slide** from the context menu. Do not delete a slide until this is done or the slide may have to be created again.

Slide order

Change the slide order in a presentation using one of the following methods:

- In **Slide Sorter** view, click on the slide that has to be moved and drag it to its new position in the presentation.
- In the Slides pane, click on the slide that has to be moved and drag it to its new position in the presentation.

Animations

If animations are going to be added to slides in a presentation, click on **Animation** on the Sidebar to open the Animation deck giving access to the various animation options as follows:

- Animation category.
- Animation effect.
- How the animation starts.
- Animation direction, duration and delay.
- Automatic preview.

Animation is an advanced technique and is beyond the scope of this chapter. For more information on animation, see Chapter 9, Slide Shows & Photo Albums.

Slide transitions

To give a presentation a professional look, it is recommended to add transitions between each slide in a presentation. Click on **Slide Transition** on the Sidebar to open the Slide Transition deck giving access to the various transition options as follows:

- Transition type.
- Modify the transition.
- How the slide advances in the presentation.
- Automatic preview

Adding slide transitions is an advanced technique and is beyond the scope of this chapter. For more information on slide transitions, see Chapter 9, Slide Shows & Photo Albums.

Running a presentation

When a presentation is completed, it is recommended to test run the presentation and make sure that everything is correct before showing the presentation in front of an audience. To display a presentation in front of an audience, a Presenter Console is available in LibreOffice Impress. However, the Presenter Console does require multiple displays to be connected to the computer for it to function.

For more information and details about running a presentation and showing it to an audience, see Chapter 9, Slide Shows & Photo Albums.

Single displays

Running a slide show using a single display is as follows:

- 1) Start the slide using one of the following methods:
 - Go to **Slide Show** on the Menu bar and select **Start from First Slide** from the submenu or use the keyboard shortcut *F5*.
 - Go to **Slide Show** on the Menu bar and select **Start from Current Slide** from the submenu or use the keyboard shortcut *Shift+F5*.
- 2) To display each slide in the presentation during the slide show, use one of the following methods:
 - Press the spacebar to advance to the next slide in the presentation.
 - Press the arrow keys to show the next or previous slide in the presentation.
 - If the option *Change slide by clicking on background* has been selected in Slide Show Settings, position the cursor on the slide and click to move to the next slide.
- 3) When the slide show has ended or to exit the slide show before it has finished, press the *Esc* key to close the slide show and return to Impress.

Multiple displays

When multiple displays are connected to a computer, the Presenter Console (Figure 21) in LibreOffice Impress becomes available providing extra control over a presentation as follows:

- On the multiple displays, the audience sees the current slide in the presentation.
- The current slide, next slide in the presentation, any slide notes, and a presentation timer are displayed on the computer display providing control of how the slide show is presented to the audience.

- Starting a slide show using Presenter Console and multiple displays is similar to running a slide show on a single display. For more information and details about using the Presenter Console, see Chapter 9 Slide Shows & Photo Albums.

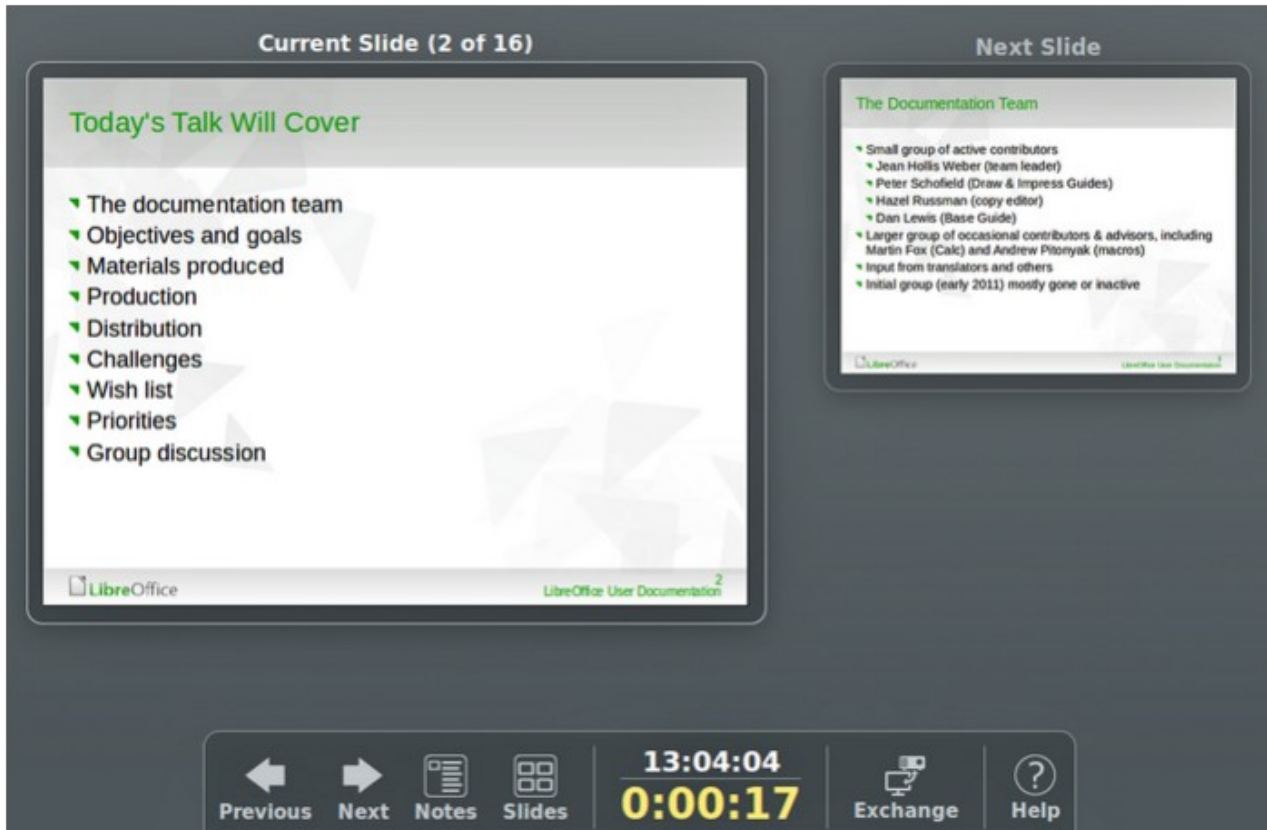


Figure 21: Presenter Console