



Calc Guide

Chapter 5

Using Graphics in Calc

Copyright

This document is Copyright © 2019 by the LibreOffice Documentation Team. Contributors are listed below. You may distribute it and/or modify it under the terms of either the GNU General Public License (<http://www.gnu.org/licenses/gpl.html>), version 3 or later, or the Creative Commons Attribution License (<http://creativecommons.org/licenses/by/4.0/>), version 4.0 or later.

All trademarks within this guide belong to their legitimate owners.

Contributors

This book is adapted and updated from the *LibreOffice 4.1 Calc Guide*.

To this edition

Jean Hollis Weber

Drew Jensen

Kees Kriek

To previous editions

Barbara Duprey

Jean Hollis Weber

John A Smith

Peter Schofield

Christian Chenal

Martin Saffron

Feedback

Please direct any comments or suggestions about this document to the Documentation Team's mailing list: documentation@global.libreoffice.org



Note

Everything you send to a mailing list, including your email address and any other personal information that is written in the message, is publicly archived and cannot be deleted.

Publication date and software version

Published December 2019. Based on LibreOffice 6.2.

Using LibreOffice on macOS

Some keystrokes and menu items are different on macOS from those used in Windows and Linux. The table below gives some common substitutions for the instructions in this book. For a more detailed list, see the application Help.

<i>Windows or Linux</i>	<i>macOS equivalent</i>	<i>Effect</i>
Tools > Options menu	LibreOffice > Preferences	Access setup options
Right-click	<i>Control</i> +click or right-click depending on computer setup	Open a context menu
<i>Ctrl</i> (Control)	⌘ (Command)	Used with other keys
<i>F5</i>	<i>Shift</i> +⌘+ <i>F5</i>	Open the Navigator
<i>F11</i>	⌘+ <i>T</i>	Open the sidebar Styles panel

Contents

Copyright.....	2
Contributors.....	2
To this edition.....	2
To previous editions.....	2
Feedback.....	2
Publication date and software version.....	2
Using LibreOffice on macOS.....	2
Introduction.....	4
Adding graphics (images) to a spreadsheet.....	4
Inserting an image file.....	4
Drag and drop.....	4
Insert Image dialog.....	4
Linking or embedding an image file.....	5
Embedding linked images.....	6
Inserting an image from the clipboard.....	6
Inserting an image using a scanner.....	7
Inserting an image from the Gallery.....	7
Modifying images.....	8
Using the Image toolbar.....	8
Using the Properties pane in the Sidebar.....	8
Adding text.....	9
Positioning, resizing, and arranging images.....	9
Using the mouse.....	9
Using the Position and Size dialog.....	10
Arranging images.....	10
Anchoring images.....	11
Aligning images.....	11
Grouping and ungrouping images.....	11
Using LibreOffice’s drawing tools.....	12
Drawing toolbar.....	12
Setting the properties of drawing objects.....	13
Resizing drawing objects.....	14
Grouping and ungrouping drawing objects.....	14
Additional tools.....	14
Using Fontwork.....	14
Creating a Fontwork object.....	15
Editing a Fontwork object.....	15

Introduction

Calc is used to present and analyze data and to make forecasts and predictions. Graphics can turn an average spreadsheet into a more memorable document. Calc can import various vector (line drawing) and raster (bitmap or photo) file formats. The most commonly used graphic formats are GIF, JPG, and PNG. See LibreOffice Help for a full list of the formats that Calc can import.

Graphics in Calc are of three basic types:

- Image files, such as photographs, drawings, and scanned images
- Diagrams created using LibreOffice's drawing tools
- Charts and graphs created using LibreOffice's Chart facility; see Chapter 3, Creating Charts and Graphs, for more information

Using graphics in Calc is similar to using graphics in other components of LibreOffice. For more detailed descriptions, please refer to the *Getting Started Guide* or the *Draw Guide*.



Note

In LibreOffice, the terms *graphics* and *images* refer to both pictures and drawing objects. Often the word images is used when referring to pictures and other graphics that are not drawing objects.

Adding graphics (images) to a spreadsheet

Graphics or images (sometimes called pictures in LibreOffice), such as corporate logos and photographs, are probably the most common types of graphics added to a spreadsheet. They may be downloaded from the Internet, scanned, created with a graphics program, photographs taken with a digital camera, or clip art in the Gallery.

Inserting an image file

When the image is in a file stored on the computer, you can insert it into a spreadsheet using either of the following methods.

Drag and drop

- 1) Open a file browser window and locate the image you want to insert.
- 2) Drag the image into the spreadsheet and drop it where you want it to appear. A faint vertical line marks where the image will be dropped.

This method embeds (saves a copy of) the image file in the document. To link the file instead of embedding it, hold down the *Ctrl+Shift* keys while dragging the image.

Insert Image dialog

- 1) Click in the spreadsheet where you want the image to appear.
- 2) Choose **Insert > Image** from the Menu bar.
- 3) On the Insert Image dialog (Figure 1), navigate to the file to be inserted, and select it.
- 4) At the bottom of the dialog is an Insert as Link option. See page 5 for the use of links.
- 5) Click **Open**. The file is inserted into the spreadsheet as a floating image and is anchored to the cell in which the cursor was placed.

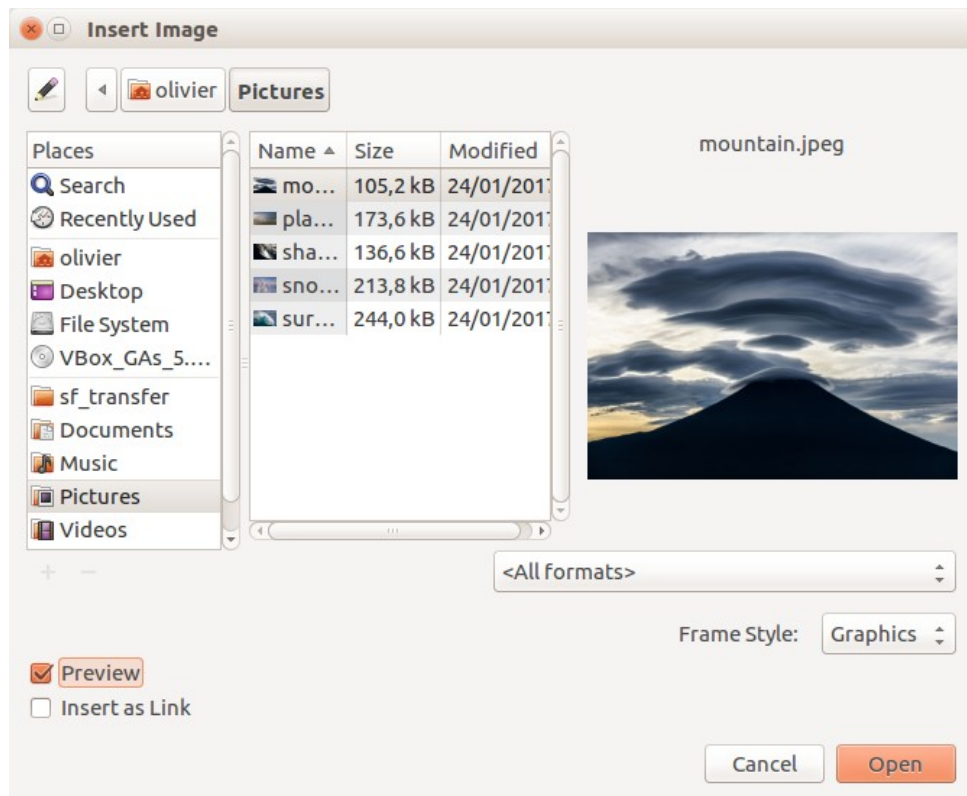


Figure 1: Insert Image dialog



Note

The Insert Image dialog may look different from the one shown in Figure 1, depending on your operating system.

Linking or embedding an image file

Embedding an image into a spreadsheet makes the image a permanent part of the spreadsheet file. Any changes you make to an embedded image will appear only in that spreadsheet; the original image will not be affected.

If you select the **Insert as Link** option in the Insert Image dialog, LibreOffice creates a link to the file containing the image instead of embedding it. The image is displayed in the document, but when the document is saved, it contains only a reference to the image file, not the image itself. The document and the image remain as two separate files, and they are merged together only when you open the document again.

Linking an image has two advantages and one disadvantage:

- Advantage – You can modify the image file separately. The modified image will appear when you next open the spreadsheet. This can be a big advantage if you (or someone else, perhaps a graphic artist) is updating images.
- Advantage – Linking can reduce the file size of the spreadsheet when it is saved, because the image file itself is not included. However, file size is usually not a problem on modern computers, and Calc can easily handle large files.
- Disadvantage – If you send the document to someone else, or move it to a different computer, you must also send the image files and keep the same file structure. For example, you might keep image files in a subfolder named Images inside the same folder containing the Calc document. Any recipient of the spreadsheet needs to put the image files in a subfolder with the same name in the same named folder as the spreadsheet.



Note

When inserting the same image several times in a document, it might appear beneficial to create links. However, this is not necessary, as LibreOffice embeds only one copy of the image file in the document. Deleting one or more of the copies does not affect the other copies of the same file.

Embedding linked images

If you originally linked the images, you can easily embed one or more of them later.

- 1) Open the spreadsheet in Calc.
- 2) Choose **Edit > Links to External Files** on the Menu bar to open the Edit Links dialog (Figure 2), which shows all the linked files.

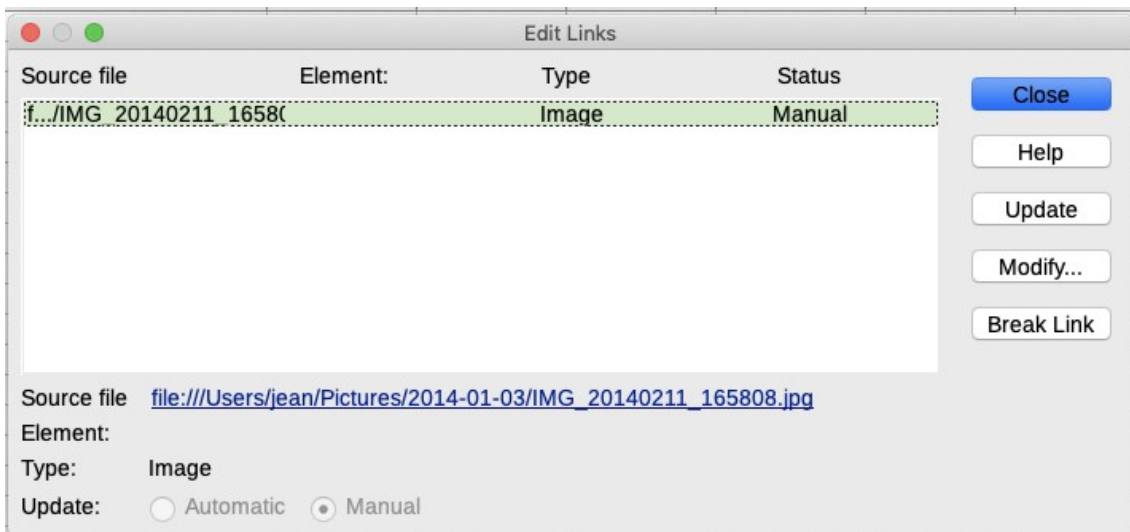


Figure 2: Edit Links dialog

- 3) Select the files you want to change from linked to embedded.
- 4) Click **Break Link** and confirm you want to remove the selected link. The file then becomes embedded into the spreadsheet.



Note

Going from embedded to linked images is not so easy. You must replace them one at a time, selecting the **Insert as Link** option when you reinsert each file.

Inserting an image from the clipboard

Using the clipboard, you can copy images into a Calc spreadsheet from another LibreOffice document and from other programs. To do this:

- 1) Open both the source document and the target document.
- 2) In the source document, right-click on the image to be copied and select **Copy** from the context menu.
- 3) Switch to the target document. Click to place the cursor in the cell where the image is to be anchored. Right-click and select **Paste** to insert the image.



Caution

If the application from which the image was copied is closed before the image is pasted into the target, the image stored on the clipboard could be lost.

Inserting an image using a scanner

If a scanner is connected to your computer, LibreOffice can call the scanning application and insert the scanned item into the LibreOffice document as an image. To start this procedure, choose **Insert > Media > Scan > Select Source**. After selecting the scanner, place the cursor where you want the image to be inserted, and choose **Insert > Media > Scan > Request**.

Although this practice is quick and easy, it is unlikely to result in a high-quality image of the correct size. You may get better results by passing scanned material into a graphics program and cleaning it up there before inserting the resulting image into LibreOffice.

Inserting an image from the Gallery

The Gallery (Figure 3) provides a convenient way to group reusable objects such as images and sounds that you can insert into your documents. The Gallery is available in all components of LibreOffice. You can add your own images as well as using the ones supplied with LibreOffice. For more information, see the *Getting Started Guide* Chapter 11, Graphics, the Gallery, and Fontwork.

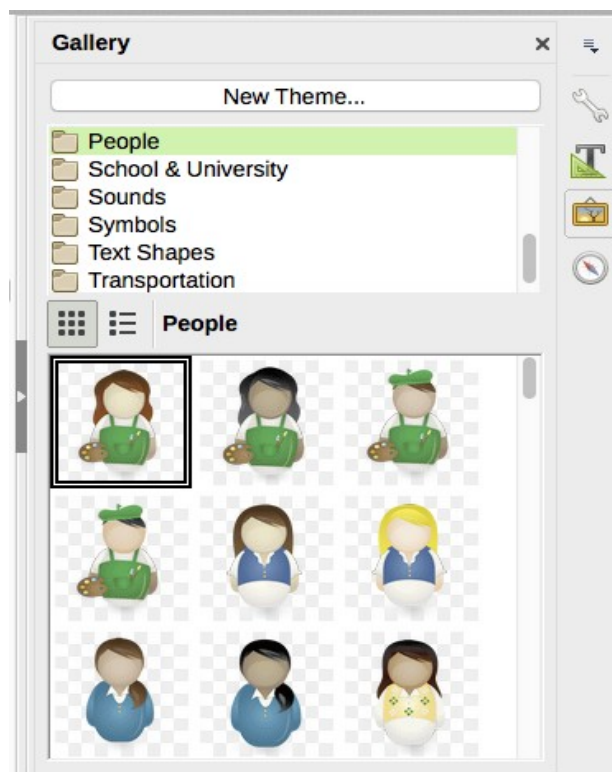


Figure 3: The Gallery in the Sidebar

To insert an image from the Gallery:

- 1) Click the **Gallery** icon in the Sidebar.
- 2) Select a theme.
- 3) Select an object with a single click.
- 4) Drag and drop the image into the document.

You can also right-click on the object and choose **Insert**.



Note

To insert an image as a link, hold down the *Shift* and *Ctrl* keys while dragging the object into the document.

Modifying images

When you insert a new image, you may need to modify it to suit the document. Any changes made in Calc do not affect the original image, whether it is an embedded or linked image file.

Calc provides several tools for working with images. These tools are sufficient for most requirements. However, for professional results it is generally better to use LibreOffice Draw or other software designed to modify image files, and then insert the result into Calc.

Using the Image toolbar

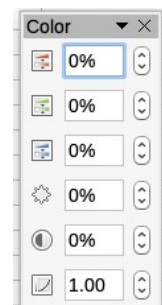
When you insert an image or select one already present in the spreadsheet, the Image toolbar replaces the Formatting toolbar. If it does not appear, go to **View > Toolbars > Image** on the Menu bar. The tools available on the Image toolbar are described below.



Note

Image properties selections affect only the display and printing of the image. The original image file remains unchanged.

- **Anchor** – choose between anchoring the image to a cell or to a page. See “Anchoring images” on page 11.
- **Align** – if two or more images are selected, you can adjust the horizontal and vertical alignment of the images in relation to each other. See “Aligning images” on page 11.
- Six buttons for arrangement (the position of images in the stacking order): **Bring to Front**, **Forward One**, **Back One**, **Send to Back**, **To Background**. See “Arranging images” on page 10.
- **Line Style**, **Line Width**, **Line Color** – set the attributes of the border around the image.
- **Area Style/Filling** – sets the color or other characteristics of the background area that contains the image, not the image itself. To see the background, you must set the transparency of the image to a suitably high value. See the *Draw Guide* for more information on how to modify areas.
- **Shadow** – sets the default shadow effect around the image. To adjust the shadow effect, open the Area dialog and choose the *Shadow* tab.
- **Filter** – opens the Image Filter toolbar. See the *Draw Guide* for details on image filters.
- **Image Mode** – changes the display of the image from color to grayscale, black and white, or a watermark. This setting affects only the display and printing of the image; the original image file remains unchanged.
- **Crop** – places cropping handles around the image. Drag a handle to crop (hide) the edges of the image.
- **Flip Horizontally** and **Flip Vertically** – changes the orientation of the image.
- **Rotate** – places rotation handles around the image.
- **Transparency** – adjusts the degree of transparency of the picture between 0% (opaque) and 100% (fully transparent).
- **Color** – opens the Color toolbar to adjust the values of the Red, Green, Blue colors, brightness, contrast and Gamma.



Using the Properties pane in the Sidebar

Some of the settings in the Image toolbar are also available in the Properties pane in the Sidebar when an image is selected. These include the **Color**, **Line**, and **Transparency** settings.

Adding text

You can add text to an image or drawing object. That text will move with the image when the image is repositioned. For more information on adding text to images, see the *Draw Guide*.

- 1) Double-click on the image. The text cursor flashes in the center of the image. The Text Formatting toolbar automatically opens at the top of the spreadsheet.



Figure 4: Text Formatting toolbar for images

- 2) Type your text and use the tools on the Text Formatting toolbar to format it. Most of the tools are the same as those for formatting text in cells.
- 3) To adjust the position of the text or how it appears in the image, right-click on the image and select **Text** from the context menu to open the Text dialog (Figure 5).

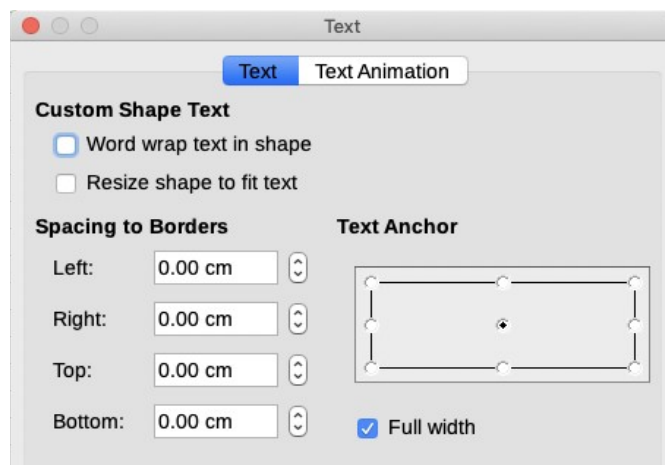


Figure 5: Text dialog

- 4) Make any necessary changes and click **OK** to close the dialog.

Positioning, resizing, and arranging images

Using the mouse

To move an image to a new position in your spreadsheet, click on the image and drag it to a new position. The image will still be anchored to the cell or page it was originally anchored to.

To resize an image:

- 1) Click on the image to display the selection handles.
- 2) Position the cursor over one of the selection handles. The cursor changes shape, giving a graphical representation of the direction of the resizing. The corner handles resize both the width and the height of the image simultaneously. The top, bottom, left and right handles only resize one dimension at a time.
- 3) Click and drag to resize the image.



Tip

To retain the original proportions of the image, *Shift+click* one of the corner handles, then drag.

Using the Position and Size dialog

To accurately position and size an image in your spreadsheet, go to **Format > Object > Position and Size** on the Menu bar, or right-click on an image and select **Position and Size** from the context menu.

On the Position and Size tab (Figure 6), you can set these values:

- **Position** – the location of the selected image on the spreadsheet.
 - *Position X* – the horizontal distance from the base point selected in the grid.
 - *Position Y* – the vertical distance from the base point selected in the grid.

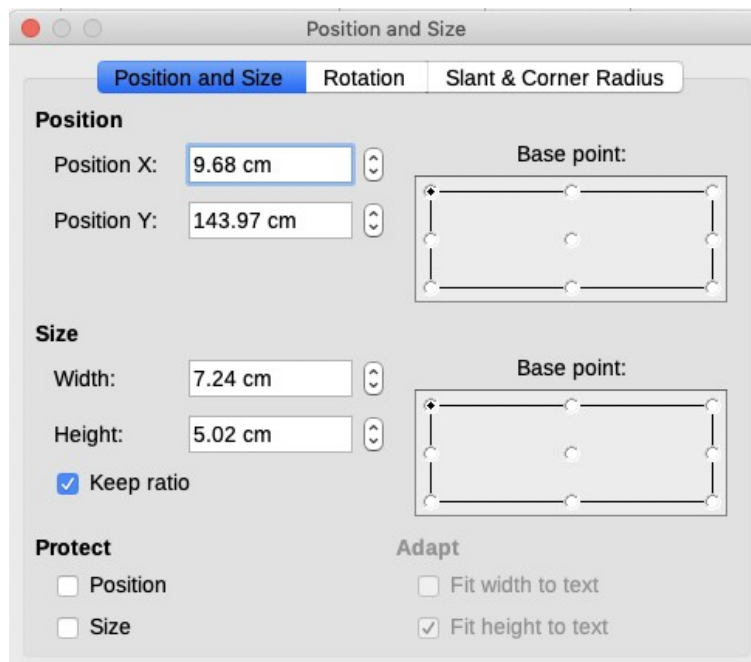


Figure 6: Position and Size dialog

- **Size** – the width and height of the image with respect to the selected base point.
- **Protect** – To prevent accidental movement or resizing of the image, select the relevant option.

The units of measurement used for X/Y coordinates and the width and height of the image are set by going to **Tools > Options > LibreOffice Draw > General**.

The default location of the base points for position and size is the upper left corner of the spreadsheet. You can temporarily change this base point to make positioning or dimensioning simpler by clicking on a position corresponding to the location of the base point you want to use. This change in base point is only valid for single use and the base point is reset to the standard position of top left corner when you close the Position and Size dialog.

You can also rotate or slant an image (using the *Rotation* or *Slant & Corner Radius* tabs of the Position and Size dialog). See the *Draw Guide* for details.

Arranging images

Each image that you place in a spreadsheet is successively stacked on the preceding image, whether or not they overlap. Use the arrange commands to change the stacking order of images. You cannot change the stacking order of text.

- 1) Select the image you want to change.
- 2) Go to **Format > Arrange** on the Menu bar, or right-click on the image and select one of the arrangement options described below.

- 3) Alternatively, click on the **Bring to Front** icon or the **Send to Back** icon on the Image toolbar to quickly move the image to the front or rear of the stack.

The arrangement options are as follows:

- **Bring to Front** – moves the selected image to the top of the stacking order, so that it is in front of other images.
- **Forward One** – moves the selected image up one level, so that it is closer to top of the stacking order. Not available on the Picture toolbar.
- **Back One** – moves the selected image down one level, so that it is closer to the bottom of the stacking order. Not available on the Image toolbar.
- **Send to Back** – moves the selected image to the bottom of the stacking order, so that it is behind the other images.
- **To Foreground** – moves the selected image in front of text.
- **To Background** – moves the selected image behind text. To select a background image so that you can modify or replace it, you have to use the Navigator. Other methods of selection, such as clicking or double-clicking, do not work.

Anchoring images

Anchor images so they stay in their position in relation to other items.

- **To Page** – anchor an image to the page to position it in a specific place. The image does not move when cells are added or deleted; it will always stay in the same position on the page where it is placed.
- **To Cell** – anchor an image to a cell to ensure that the image always stays with the content it is originally anchored to. If an image is anchored to cell B10, and a new row is inserted above row 10, the image will then be anchored to cell B11.

To anchor an image or change the type of anchor used:

- Go to **Format > Anchor > To Page** or **To Cell** on the Menu bar, or right-click on the image and select **Anchor > To Page** or **To Cell** from the context menu.
- Alternatively, click on the **Change Anchor** icon on the Image toolbar and the anchor type will toggle between **To Page** or **To Cell**.

Aligning images

When you have more than one image in your spreadsheet, you can align these images to give your spreadsheet a more professional look. The options include three for aligning the images horizontally (left, centered, right) and three for aligning the images vertically (top, center, bottom).

- 1) Select all of the images to be aligned.
- 2) Go to **Format > Align** on the Menu bar, or right-click on the image and select **Align** from the context menu, or click on the **Alignment** icon on the Picture toolbar.
- 3) Select one of the six options available for alignment.

Grouping and ungrouping images

To group several images so that they become a single object in the spreadsheet:

- 1) Select the images you want to group (select one and hold down the *Shift* key while selecting others).
- 2) Go to **Format > Group > Group** on the Menu bar, or right-click on the selected images and select **Group** from the context menu.

To ungroup images:

- 1) Select the image group you want to ungroup.
- 2) Go to **Format > Group > Ungroup** on the Menu bar, or right-click on the selected images and select **Ungroup** from the context menu.

To edit an image in a group:

- 1) Select the image group where you want to edit an image within the group.
- 2) Go to **Format > Group > Enter Group** on the Menu bar, or right-click on the selected images and select **Enter Group** from the context menu.
- 3) Select the image you want to make changes to and make the changes.
- 4) Go to **Format > Group > Exit Group** on the Menu bar, or right-click on the selected images and select **Exit Group** from the context menu.

Using LibreOffice's drawing tools

Calc, like all other components of LibreOffice, has a range of tools to create drawings such as simple diagrams, using rectangles, circles, lines, text, and other shapes. You can group several drawing objects to make sure they maintain their relative position and proportion if you move or resize them.

You can also use the drawing tools to annotate photographs, screen captures, or other illustrations produced by other programs, but this is not recommended because you cannot include images in a group with drawing objects, so they may not remain aligned in the document. If you need to create complex drawings, it is recommended to use LibreOffice Draw and then insert the drawing into your spreadsheet. For a more detailed explanation, see the *Draw Guide*.

Drawing toolbar

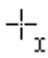
To begin using the drawing tools, go to **View > Toolbars > Drawing** to open the Drawing toolbar, which appears in its default position at the bottom of the spreadsheet. You can make this toolbar a floating toolbar and move it to a convenient position.

When the Drawing toolbar opens, it opens with a default set of tools as shown in Figure 7. Hover the mouse pointer over a tool to see a tooltip describing its function. Tools with small arrows to the right side open with palettes of tools. To add tools to the Drawing toolbar, right-click in an empty area on the toolbar and select **Visible Buttons** from the context menu.



Figure 7: Drawing toolbar

To use a drawing tool:

- 1) Click in the document where you want the drawing to be anchored. You can change the anchor later, if necessary.
- 2) Choose the tool from the Drawing toolbar (Figure 7). The mouse pointer changes to a drawing-functions pointer  and the normal Formatting Toolbar changes to Drawing Object Properties toolbar (Figure 8).
- 3) Move the cross-hair pointer to the place in the document where you want the drawing object to appear and then click and drag to create the object. Release the mouse button. The selected drawing function remains active, so that you can draw another object of the same type.
- 4) To cancel the selected drawing function, press the *Esc* key or click on the **Select** icon (the arrow) on the Drawing toolbar.

- 5) You can now change the properties (fill color, line type and weight, anchoring, and others) of the drawing object using the Drawing Object Properties toolbar (Figure 8), the Properties pane in the Sidebar, or the choices reached by right-clicking on the drawing object.

Setting the properties of drawing objects

For more information on the properties of drawing objects, see the *Draw Guide*.

You can set some default properties for a drawing object before you draw an object. These default properties are applied only to the current spreadsheet and are not retained when you close the spreadsheet. The properties apply only to drawing objects.

- 1) Click **Select** on the Drawing toolbar (Figure 7).
- 2) On the Drawing Object Properties toolbar (Figure 8), set the values you want to use for each property. When you select area or line properties, dialogs open where you can set the values used for area or line.



Figure 8: Drawing Object Properties toolbar

- 3) After you draw an object or group it with another object, more properties become active. These appear on the toolbar (Figure 9) and some are shown in the Properties pane of the Sidebar (Figure 10).



Figure 9: Drawing Object Properties toolbar after inserting an object

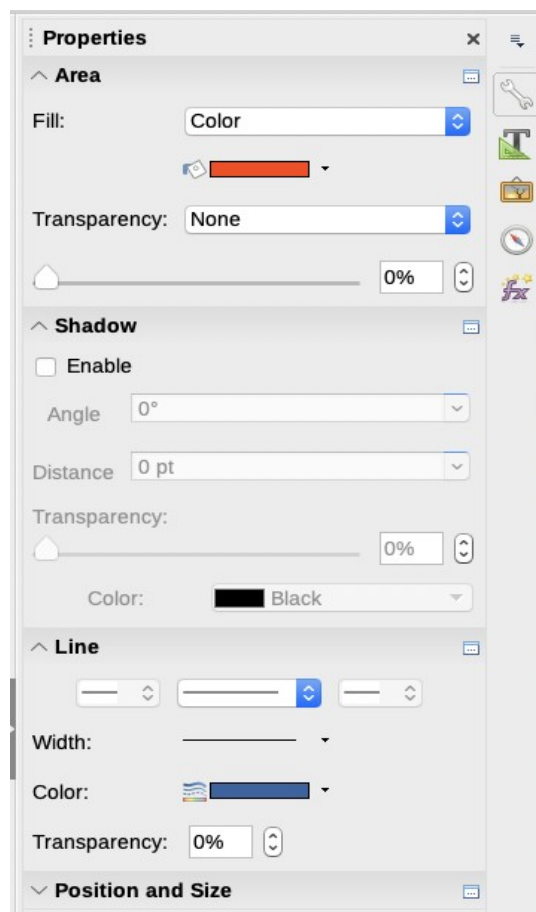


Figure 10: Drawing Object Properties in Sidebar

You can change the properties of an existing drawing object (fill color, line type and weight, anchoring, and so on) using the Drawing Object Properties toolbar (Figure 8), the Properties pane in the Sidebar, or the context menu when you right-click on the drawing object.

Resizing drawing objects

Select the object and click on one of the selection handles then drag the object to its new size. For a scaled resizing, select one of the corner handles and keep the *Shift* key pressed while dragging the handle. For more information, see “Positioning, resizing, and arranging images” on page 9.

Grouping and ungrouping drawing objects

For grouping, ungrouping, and editing grouped drawing objects, see “Grouping and ungrouping images” on page 11.

Additional tools

Some additional tools are available when you right-click on an image or drawing object and open the context menu.

Description

You can add metadata in the form of a title and description to an image. This information is used by accessibility tools (such as screen reader software) and as ALT (alternative text) attributes if you export the document to HTML.

Name

You can add a custom name to be assigned to an image; this will make the image easier to find in the Navigator. Also, assigning names to images helps identify them when teams of people are working on the same multi-page spreadsheet.

Rotate or Flip

You can rotate the image or flip it horizontally or vertically.

Assign Macro

Opens the Assign Macro dialog so you can add programmable functionality to the graphic. Calc has a very good macro functionality. For more information, see Chapter 12, Calc Macros.

Edit Hyperlink

You can define a hyperlink from an image to another location in your spreadsheet, another document, or a web page. Select **Edit Hyperlink** from the context menu to open the Hyperlink dialog. See Chapter 10, Linking Calc Data, for more information on hyperlinks.

Compress

You can compress images to reduce the file size of the spreadsheet. Select **Compress** from the context menu to open a dialog where you can set the compression options.

Edit with external tool

You can edit an image with an external tool. The dialog that opens will depend on your computer setup.

Using Fontwork

With Fontwork, you can create graphical text art objects to make your work more attractive. There are many different settings for text art objects (line, area, position, size, and more), so you have a large choice.

Fontwork is available with each component of LibreOffice, but you will notice small differences in the way that each component displays it.

Creating a Fontwork object

- 1) On the Fontwork toolbar (**View > Toolbars > Fontwork**) or the Drawing toolbar (**View > Toolbars > Drawing**), click the Fontwork icon.
- 2) In the Fontwork Gallery (Figure 11), select a Fontwork style, then click **OK**. The Fontwork object will appear in the document.

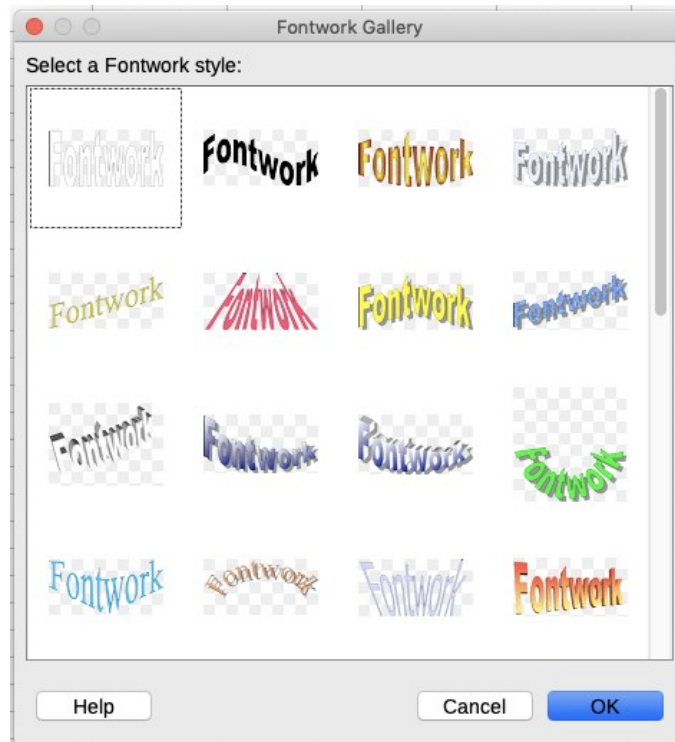


Figure 11: The Fontwork Gallery

- 3) Double-click the object to edit the Fontwork text (see Figure 12). Select the text and type your own text in place of the black Fontwork text that appears over the object.



Figure 12: Editing Fontwork text

- 4) Click anywhere in a free space or press *Esc* to apply your changes.

Editing a Fontwork object

Now that the Fontwork object is created, you can edit some of its attributes. To do this, you can use the Fontwork toolbar, the Formatting toolbar, or menu options. For more information, see Chapter 11, Graphics, Gallery, Fontwork, in the *Getting Started Guide*.