



**LibreOffice**  
The Document Foundation

## Getting Started Guide

# *Chapter 1*

## *Introducing LibreOffice*

## Copyright

---

This document is Copyright © 2010–2011 by its contributors as listed below. You may distribute it and/or modify it under the terms of either the GNU General Public License (<http://www.gnu.org/licenses/gpl.html>), version 3 or later, or the Creative Commons Attribution License (<http://creativecommons.org/licenses/by/3.0/>), version 3.0 or later.

All trademarks within this guide belong to their legitimate owners.

## Contributors

Ron Faile Jr.  
Jeremy Cartwright  
Jean Hollis Weber

## Feedback

Please direct any comments or suggestions about this document to:  
[documentation@global.libreoffice.org](mailto:documentation@global.libreoffice.org)

## Acknowledgments

This chapter is based on Chapter 1 of *Getting Started with OpenOffice.org*. The contributors to that chapter are:

Thomas Astleitner	Richard Barnes	Agnes Belzunce
Daniel Carrera	Laurent Duperval	Richard Holt
Ian Laurenson	Alan Madden	Carol Roberts
Iain Roberts	Gary Schnabl	Janet M. Swisher
Jean Hollis Weber	Linda Worthington	Michele Zarri

## Publication date and software version

Published 19 June 2010. Based on LibreOffice 3.3.

## Note for Mac users

---

Some keystrokes and menu items are different on a Mac from those used in Windows and Linux. The table below gives some common substitutions for the instructions in this chapter. For a more detailed list, see the application Help.

<i>Windows/Linux</i>	<i>Mac equivalent</i>	<i>Effect</i>
<b>Tools</b> → <b>Options</b> menu selection	<b>LibreOffice</b> → <b>Preferences</b>	Access setup options
<i>Right-click</i>	<i>Control+click</i>	Opens a context menu
<i>Ctrl (Control)</i>	⌘ ( <i>Command</i> )	Used with other keys
<i>F5</i>	<i>Shift+⌘+F5</i>	Opens the Navigator
<i>F11</i>	⌘+T	Opens the Styles & Formatting window

# Contents

---

Copyright.....	2
Note for Mac users.....	2
What is LibreOffice?.....	5
Writer (word processor).....	5
Calc (spreadsheet).....	5
Impress (presentations).....	5
Draw (vector graphics).....	5
Base (database).....	5
Math (formula editor).....	5
The advantages of LibreOffice.....	6
Minimum requirements.....	6
How to get the software.....	7
How to install the software.....	7
Extensions and add-ons.....	7
How to get help.....	7
Help system.....	7
Free online support.....	8
Paid support and training.....	8
Starting LibreOffice.....	8
Starting from an existing document.....	8
Using the Quickstarter under Windows.....	9
Using the Quickstarter in Linux and Mac OS X.....	10
Parts of the main window.....	10
Menu bar.....	10
Toolbars.....	11
Right-click (context) menus.....	13
Status bar.....	13
What are all these things called?.....	14
Starting a new document.....	15
Opening an existing document.....	16
Saving a document.....	17
Password protection.....	17
Saving a document automatically.....	18
Renaming and deleting files.....	18
Using the Open and Save As dialogs.....	18
Using the Navigator.....	19
Undoing and redoing changes.....	21
Closing a document.....	21
Closing LibreOffice.....	22



## What is LibreOffice?

---

LibreOffice is a freely available, full-featured office productivity suite. Its native file format is OpenDocument, an open standard format that is being adopted by governments worldwide as a required file format for publishing and accepting documents. LibreOffice can also open and save documents in many other formats, including those used by several versions of Microsoft Office.

LibreOffice includes the following components:

### Writer (word processor)

Writer is a feature-rich tool for creating letters, books, reports, newsletters, brochures, and other documents. You can insert graphics and objects from other components into Writer documents. Writer can export files to HTML, XHTML, XML, Adobe's Portable Document Format (PDF), and several versions of Microsoft Word files. It also connects to your email client.

### Calc (spreadsheet)

Calc has all of the advanced analysis, charting, and decision-making features expected from a high-end spreadsheet. It includes over 300 functions for financial, statistical, and mathematical operations, among others. The Scenario Manager provides "what if" analysis. Calc generates 2-D and 3-D charts, which can be integrated into other LibreOffice documents. You can also open and work with Microsoft Excel workbooks and save them in Excel format. Calc can export spreadsheets to Adobe's PDF and to HTML.

### Impress (presentations)

Impress provides all the common multimedia presentation tools, such as special effects, animation, and drawing tools. It is integrated with the advanced graphics capabilities of LibreOffice's Draw and Math components. Slide shows can be further enhanced with Fontwork's special effects text, as well as sound and video clips. Impress is compatible with Microsoft's PowerPoint file format and can also save your work in numerous graphics formats, including Macromedia Flash (SWF).

### Draw (vector graphics)

Draw is a vector drawing tool that can produce everything from simple diagrams or flowcharts to 3-D artwork. Its Smart Connectors feature allows you to define your own connection points. You can use Draw to create drawings for use in any of LibreOffice's other components, and you can create your own clip art and add it to the Gallery. Draw can import graphics from many common formats and save them in over 20 formats, including PNG, HTML, PDF, and Flash.

### Base (database)

Base provides tools for day-to-day database work within a simple interface. It can create and edit forms, reports, queries, tables, views, and relations, so that managing a connected database is much the same as in other popular database applications. Base provides many new features, such as the ability to analyze and edit relationships from a diagram view. Base incorporates HSQLDB as its default relational database engine. It can also use dBASE, Microsoft Access, MySQL, or Oracle, or any ODBC-compliant or JDBC-compliant database. Base also provides support for a subset of ANSI-92 SQL.

### Math (formula editor)

Math is LibreOffice's formula or equation editor. You can use it to create complex equations that include symbols or characters not available in standard font sets. While it is most commonly used

to create formulas in other documents, such as Writer and Impress files, Math can also work as a standalone tool. You can save formulas in the standard Mathematical Markup Language (MathML) format for inclusion in web pages and other documents not created by LibreOffice.

## The advantages of LibreOffice

---

Here are some of the advantages of LibreOffice over other office suites:

- **No licensing fees.** LibreOffice is free for anyone to use and distribute at no cost. Many features that are available as extra cost add-ins in other office suites (like PDF export) are free with LibreOffice. There are no hidden charges now or in the future.
- **Open source.** You can distribute, copy, and modify the software as much as you wish, in accordance with either of LibreOffice's Open Source licenses.
- **Cross-platform.** LibreOffice runs on several hardware architectures and under multiple operating systems, such as Microsoft Windows, Mac OS X and Linux,.
- **Extensive language support.** LibreOffice's user interface is available in over 40 languages, and the LibreOffice project provides spelling, hyphenation, and thesaurus dictionaries in over 70 languages and dialects. LibreOffice also provides support for both Complex Text Layout (CTL) and Right to Left (RTL) layout languages (such as Urdu, Hebrew, and Arabic).
- **Consistent user interface.** All the components have a similar "look and feel," making them easy to use and master.
- **Integration.** The components of LibreOffice are well integrated with one another.
  - All the components share a common spelling checker and other tools, which are used consistently across the suite. For example, the drawing tools available in Writer are also found in Calc, with similar but enhanced versions in Impress and Draw.
  - You do not need to know which application was used to create a particular file. For example, you can open a Draw file from Writer.
- **Granularity.** Usually, if you change an option, it affects all components. However, LibreOffice options can be set at a component level or even document level.
- **File compatibility.** In addition to its native OpenDocument formats, LibreOffice includes PDF and Flash export capabilities, as well as support for opening and saving files in many common formats including Microsoft Office, HTML, XML, WordPerfect, and Lotus 1-2-3 formats. Using an extension (included): the ability to import and edit some PDF files.
- **No vendor lock-in.** LibreOffice uses OpenDocument, an XML (eXtensible Markup Language) file format developed as an industry standard by OASIS (Organization for the Advancement of Structured Information Standards). These files can easily be unzipped and read by any text editor, and their framework is open and published.
- **You have a voice.** Enhancements, software fixes, and release dates are community-driven. You can join the community and affect the course of the product you use.

You can read more about LibreOffice and The Document Foundation on their websites at <http://www.libreoffice.org/> and <http://www.documentfoundation.org/>.

## Minimum requirements

---

LibreOffice 3.x requires one of the following operating systems:

- **Microsoft Windows** 2000 (Service Pack 4 or higher), XP, Vista, or 7
- **GNU/Linux** Kernel version 2.6.18 and glibc2 version 2.5 or higher is required

- **Mac OS X 10.4 (Tiger) or higher**

Some LibreOffice features (wizards and the HSQLDB database engine) require that the Java Runtime Environment (JRE) 1.6.x or higher be installed on your computer. Although LibreOffice will work without Java support, some features will not be available. If you have an older PC and do not need the features requiring the JRE, you can disable it to speed up the loading of the program.

For a more detailed listing of requirements, see the LibreOffice website, <http://www.libreoffice.org/get-help/system-requirements/>.

## How to get the software

---

The software can be downloaded from <http://www.libreoffice.org/>. You can also download the software by using a Peer-to-Peer client, such as BitTorrent, at the same address.

Linux users will find LibreOffice included in many of the latest Linux distributions (Ubuntu is just one example).

## How to install the software

---

Information on installing and setting up LibreOffice on the various supported operating systems is given here: <http://www.libreoffice.org/get-help/installation/>.

## Extensions and add-ons

---

Extensions and add-ons are available to enhance LibreOffice. Several extensions are installed with the program and others are available from the official extensions repository, <http://extensions.libreoffice.org/>. See Chapter 14, Customizing LibreOffice, for more information on installing them.

## How to get help

---

This book, the other LibreOffice user guides, the built-in Help system, and user support systems assume that you are familiar with your computer and basic functions such as starting a program, opening and saving files.

### Help system

LibreOffice comes with an extensive Help system. This is your first line of support for using LibreOffice.

To display the full Help system, press *F1* or select **LibreOffice Help** from the Help menu. In addition, you can choose whether to activate Tips, Extended tips, and the Help Agent (using **Tools** → **Options** → **LibreOffice** → **General**).

If Tips are enabled, place the mouse pointer over any of the icons to see a small box (“tooltip”) with a brief explanation of the icon’s function. For a more detailed explanation, select **Help** → **What's This?** and hold the pointer over the icon.

## Free online support

The LibreOffice community not only develops software, but provides free, volunteer-based support. Users of LibreOffice can get comprehensive online support from the community through mailing lists or forums. There are also other websites run by users that offer free tips and tutorials.

<b>Free LibreOffice support</b>	
FAQs	Answers to Frequently Asked Questions <a href="http://www.libreoffice.org/get-help/faq/">http://www.libreoffice.org/get-help/faq/</a>
Documentation	User guides, how-tos, and other documentation. <a href="http://www.libreoffice.org/get-help/documentation/">http://www.libreoffice.org/get-help/documentation/</a>
Mailing Lists	Free community support is provided by a network of experienced users. <a href="http://www.libreoffice.org/get-help/mailling-lists/">http://www.libreoffice.org/get-help/mailling-lists/</a>
International Support	The LibreOffice website in your language. <a href="http://www.libreoffice.org/international-sites/">http://www.libreoffice.org/international-sites/</a> International mailing lists <a href="http://wiki.documentfoundation.org/Local_Mailing_Lists">http://wiki.documentfoundation.org/Local_Mailing_Lists</a>
Accessibility Options	Information in accessibility options are available. <a href="http://www.libreoffice.org/get-help/accessibility/">http://www.libreoffice.org/get-help/accessibility/</a>
Mac Support	Support for installing and using LibreOffice on Mac OS X. <a href="http://www.libreoffice.org/get-help/installation/">http://www.libreoffice.org/get-help/installation/</a>

## Paid support and training

Alternatively, you can pay for support services. Service contracts can be purchased from a vendor or consulting firm specializing in LibreOffice.

## Starting LibreOffice

The most common way to launch any component of LibreOffice is by using the system menu, the standard menu from which most applications are started. On Windows, it is called the Start menu. On GNOME, it is called the Applications menu. On KDE it is identified by the KDE logo. On Mac OS X, it is the Applications menu.

When LibreOffice was installed on your computer, in most cases a menu entry for each component was added to your system menu. The exact name and location of these menu entries depend on the operating system and graphical user interface.

## Starting from an existing document

You can start LibreOffice by double-clicking the filename of an LibreOffice document in a file manager such as Windows Explorer. The appropriate component of LibreOffice will start and the document will be loaded.



### Note for Windows users

If you have associated Microsoft Office file types with LibreOffice, then when you double-click on a **\*.doc** (Word) file, it opens in Writer; **\*.xls** (Excel) files open in Calc, and **\*.ppt** (PowerPoint) files open in Impress.

If you did not associate the file types, then when you double-click on a Microsoft Word document, it opens in Microsoft Word (if Word is installed on your computer), Excel files open in Excel, and PowerPoint files open in PowerPoint.

You can use another method to open Microsoft Office files in LibreOffice and save in those formats from LibreOffice. See “Opening an existing document” on page 16 for more information.

## Using the Quickstarter under Windows

The Quickstarter is an icon that is placed in the Windows system tray during system startup. It indicates that LibreOffice has been loaded and is ready to use. (The Quickstarter loads library **\*.DLL** files required by LibreOffice, shortening the startup time for LibreOffice components). If the Quickstarter is disabled, see “Reactivating the Quickstarter” if you want to enable it.

### Using the Quickstarter icon

Right-click the **Quickstarter** icon in the system tray to open a pop-up menu (Figure 1) from which you can open a new document, open the Templates and Documents dialog, or choose an existing document to open. You can also double-click the **Quickstarter** icon to display the Templates and Documents dialog.

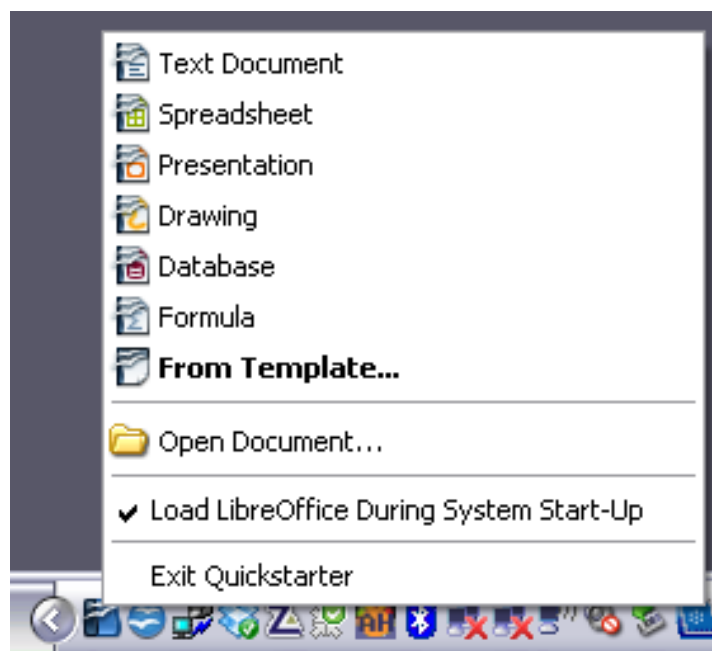


Figure 1: Quickstarter pop-up menu in Windows

## Disabling the Quickstarter

To close the Quickstarter, right-click on the icon in the system tray, and then click **Exit Quickstarter** on the pop-up menu. The next time the computer is restarted, the Quickstarter will be loaded again.

To prevent LibreOffice.org from loading during system startup, deselect the **Load LibreOffice during system start-up** item on the pop-up menu. You might want to do this if your computer has insufficient memory, for example.

## Reactivating the Quickstarter

If the Quickstarter has been disabled, you can reactivate it by selecting the **Load LibreOffice during system start-up** checkbox in **Tools** → **Options** → **LibreOffice** → **Memory**.

## Using the Quickstarter in Linux and Mac OS X

LibreOffice under Linux has a Quickstarter that looks and acts like the one described above for Windows (the checkbox on the Memory page is labeled **Enable systray quickstarter**).

Mac OS X provides similar functionality through a popup menu from the dock.

## Parts of the main window

---

The main window is similar in each component of LibreOffice, although some details vary. See the chapters in this book about Writer, Calc, Draw, and Impress for descriptions of those details.

Common features include the menu bar, the standard toolbar, and the formatting toolbar at the top of the window and the status bar at the bottom.

### Menu bar

The *Menu bar* is located across the top of the LibreOffice window, just below the Title bar. When you choose one of the menus listed below, a submenu drops down to show commands.

- **File** contains commands that apply to the entire document such as Open, Save, and Export as PDF.
- **Edit** contains commands for editing the document such as Undo: xxx (where xxx is the command to undo) and Find & Replace. It also contains commands to cut, copy, and paste selected parts of your document.
- **View** contains commands for controlling the display of the document such as Zoom and Web Layout.
- **Insert** contains commands for inserting elements into your document such as Header, Footer, and Picture.
- **Format** contains commands, such as Styles and Formatting and AutoCorrect, for formatting the layout of your document.
- **Table** shows all commands to insert and edit a table in a text document.
- **Tools** contains functions such as Spelling and Grammar, Customize, and Options.
- **Window** contains commands for the display window.
- **Help** contains links to the LibreOffice Help file, What's This?, and information about the program. See "How to get help" on page 7.

## Toolbars

LibreOffice has several types of toolbars: docked (fixed in place), floating, and tear-off. Docked toolbars can be moved to different locations or made to float, and floating toolbars can be docked.

The top docked toolbar, just under the Menu bar is called the *Standard* toolbar. It is consistent across the LibreOffice applications.

The second toolbar at the top is the *Formatting* bar. It is context-sensitive; that is, it shows the tools relevant to the cursor's current position or selection. For example, when the cursor is on a graphic, the Formatting bar provides tools for formatting graphics; when the cursor is in text, the tools are for formatting text.

### Displaying or hiding toolbars

To display or hide toolbars, choose **View** → **Toolbars**, then click on the name of a toolbar in the list. An active toolbar shows a checkmark beside its name. Tear-off toolbars are not listed in the View menu.

### Submenus and tear-off toolbars

Toolbar icons with a small triangle to the right will display *submenus*, *tear-off toolbars*, and other ways of selecting things, depending on the icon.

Figure 2 shows a tear-off toolbar from the Drawing toolbar.

Tear-off toolbars can be floated or docked along an edge of the screen or in one of the existing toolbar areas. To move a floating tear-off toolbar, drag it by the title bar, as shown in Figure 4.

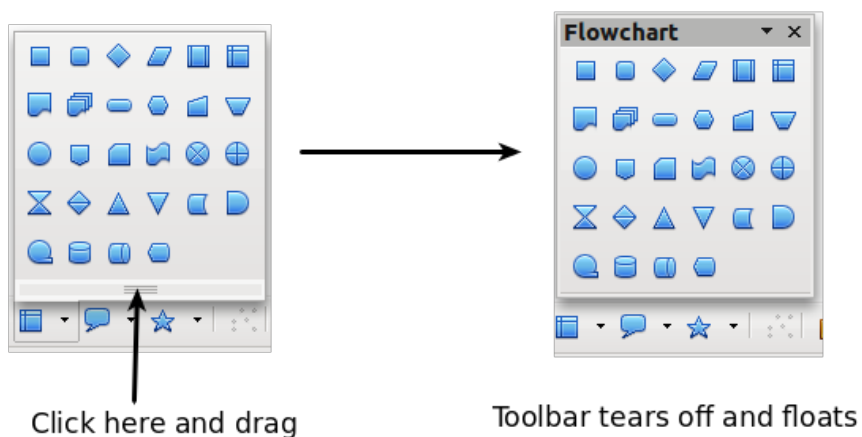


Figure 2: Example of a tear-off toolbar

### Moving toolbars

To move a docked toolbar, place the mouse pointer over the toolbar handle (the small vertical bar to the left of the toolbar), hold down the left mouse button, drag the toolbar to the new location, and then release the mouse button (Figure 3). To move a floating toolbar, click on its title bar and drag it to a new location (Figure 4).

Handles of docked toolbars

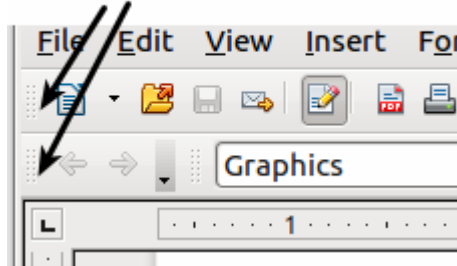


Figure 3: Moving a docked toolbar

Title bar of floating toolbar

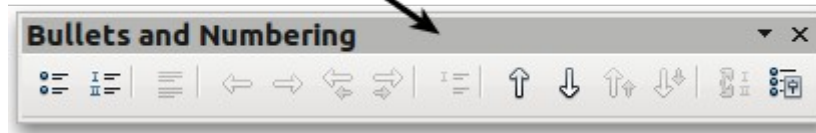


Figure 4: Moving a floating toolbar

### Floating toolbars

LibreOffice includes several additional context-sensitive toolbars, whose defaults appear as floating toolbars in response to the cursor's current position or selection. For example, when the cursor is in a table, a floating *Table* toolbar appears, and when the cursor is in a numbered or bullet list, the *Bullets and Numbering* toolbar appears. You can dock these toolbars to the top, bottom, or side of the window, if you wish (see "Moving toolbars" above).

### Docking/floating windows and toolbars

Toolbars and some windows, such as the Navigator and the Styles and Formatting window, are dockable. You can move, resize, or dock them to an edge.

To dock a window or toolbar, hold down the *Control* key and double-click on the frame of the floating window (or in a vacant area near the icons at the top of the floating window) to dock it in its last position.

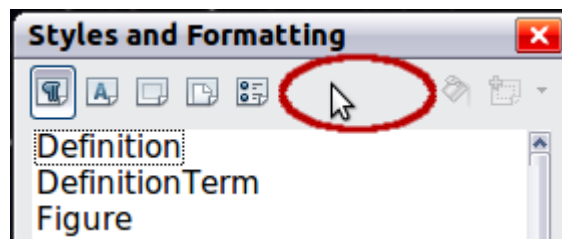


Figure 5: Control+click to dock or undock

To undock a window, hold down the *Control* key and double-click on the frame (or a vacant area near the icons at the top) of the docked window.

### Customizing toolbars

You can customize toolbars in several ways, including choosing which icons are visible and locking the position of a docked toolbar. You can also add icons and create new toolbars, as described in Chapter 14.

To access a toolbar's customization options, use the down-arrow at the end of the toolbar or on its title bar.

## Toolbar customization options



Figure 6: Customizing toolbars

To show or hide icons defined for the selected toolbar, choose **Visible Buttons** from the drop-down menu. Visible icons are indicated by an outline around the icon. Click on icons to select or deselect them.

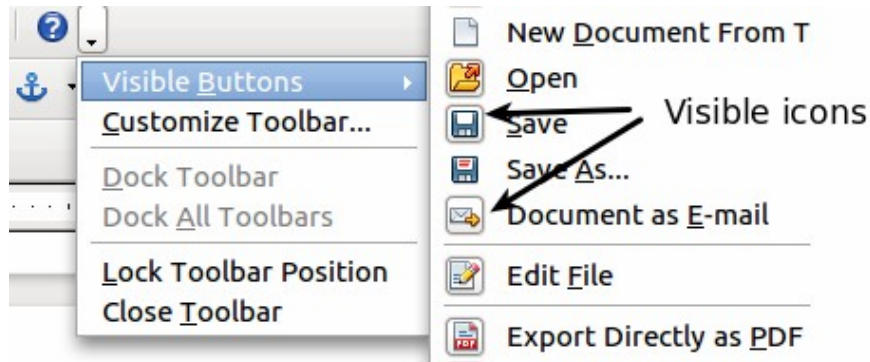


Figure 7: Selection of visible toolbar icons

## Right-click (context) menus

You can quickly access many menu functions by right-clicking on a paragraph, graphics, or other object. A context menu will pop up. Often the context menu is the fastest and an easier way to reach a function. If you are not sure where a function is located in the menus or toolbars, you can often find it by right-clicking.

## Status bar

The status bar is located at the bottom of the workspace. It provides information about the document and convenient ways to quickly change some features. It is similar in Writer, Calc, Impress, and Draw, although each component includes some component-specific items.

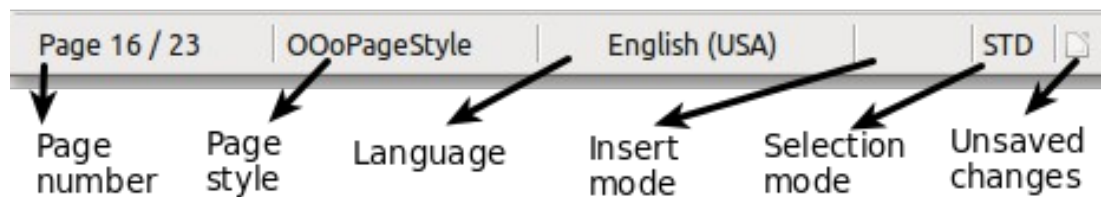


Figure 8: Left end of status bar in Writer

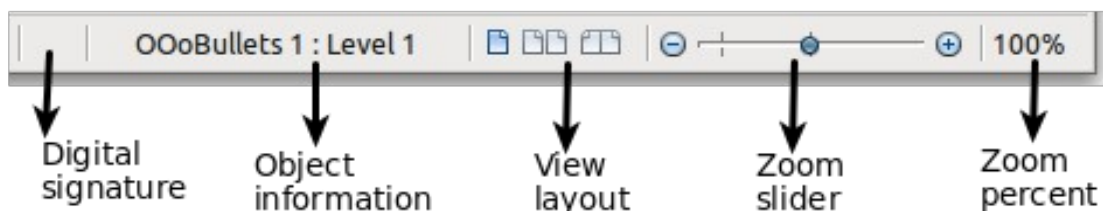


Figure 9: Right end of status bar in Writer

Common status bar items are described below.


### Page, sheet, or slide number

Shows the current page, sheet, or slide number and the total number of pages, sheets, or slides in the document. Double-click on this field to open the Navigator. Other uses of this field depend on the component.


### Page style or slide design

Shows the current page style or slide design. To edit the current page style or slide design, double-click on this field.

### Unsaved changes

An icon  appears here if changes to the document have not been saved.

### Digital signature

If the document has been digitally signed, an icon  shows here. You can double-click the icon to view the certificate.

### Object information

Displays information relevant to the cursor's position or the selected element of the document. Double-clicking in this area usually opens a relevant dialog.

### Zoom slider and percent

To change the view magnification, drag the Zoom slider, or click on the + and – signs, or right-click on the zoom level percent to pop up a list of magnification values from which to choose.

Double-clicking on the zoom level percent opens the **Zoom & View Layout** dialog.

## What are all these things called?

---

The terms used in LibreOffice for most parts of the *user interface* (the parts of the program you see and use, in contrast to the behind-the-scenes code that actually makes it work) are the same as for most other programs.

A *dialog* is a special type of window. Its purpose is to inform you of something, or request input from you, or both. It provides controls for you to use to specify how to carry out an action. The technical names for common controls are shown in Figure 10; not shown is the list box (from which you select an item). In most cases we do not use the technical terms in this book, but it is useful to know them because the Help and other sources of information often use them.

In most cases, you can interact only with the dialog (not the document itself) as long as the dialog remains open. When you close the dialog after use (usually, clicking **OK** or another button saves your changes and closes the dialog), then you can again work with your document.

Some dialogs can be left open as you work, so you can switch back and forth between the dialog and your document. An example of this type is the Find & Replace dialog.

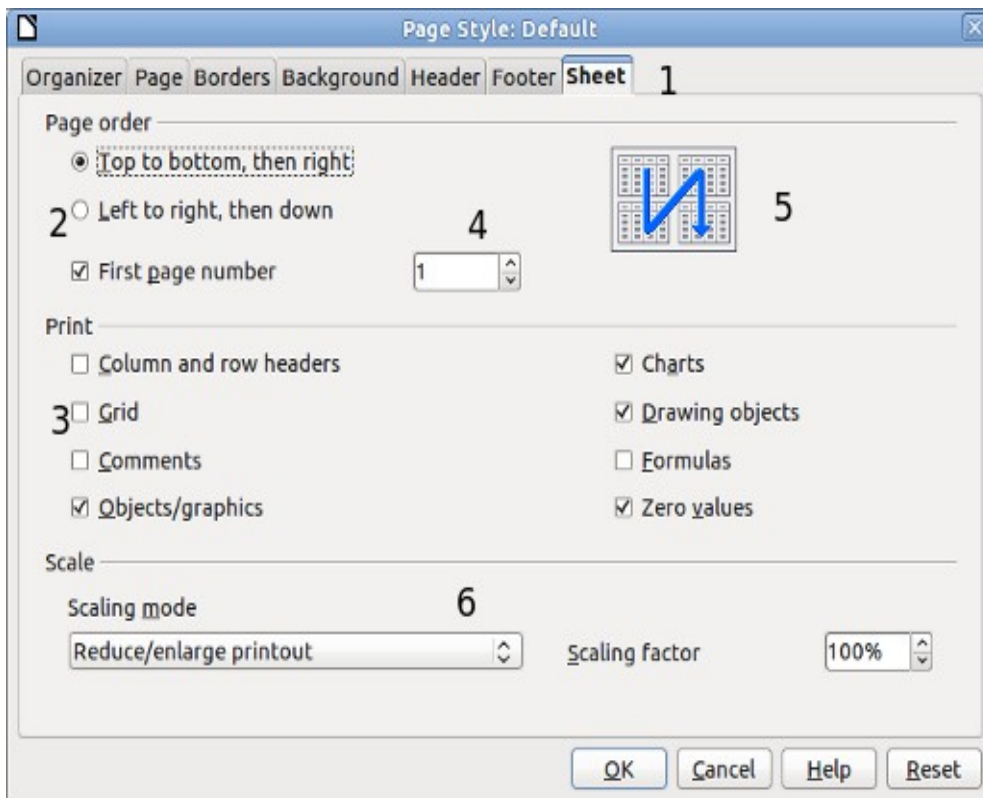


Figure 10: Dialog showing common controls:  
 1=Tabbed page (not strictly speaking a control)  
 2=Radio buttons (only one can be selected at a time)  
 3=Checkbox (more than one can be selected at a time)  
 4=Spin box (click the up and down arrows to change the number shown in the text box next to it, or type in the text box)  
 5=Thumbnail or preview  
 6=Drop-down list from which to select an item  
 7=Push buttons

## Starting a new document

---

You can start a new, blank document in LibreOffice in several ways.

When LibreOffice is open but no document is open (for example if you close all the open documents but leave the program running), the Start Center is shown. Click one of the icons to open a new document of that type, or click the Templates icon to start a new document using a template.

You can also start a new document in one of the following ways.

- Use **File** → **New** and choose the type of document.
- Use the arrow next to the **New** button on the main toolbar. From the drop-down menu, select the type of document to be created.
- Press **Control+N** on the keyboard.
- Use **File** → **Wizards** for some special types of documents.

If a document is already open in LibreOffice, the new document opens in a new window.

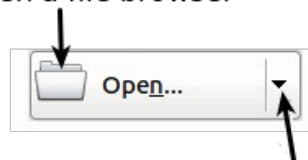


Figure 11: LibreOffice Start Center

## Opening an existing document

When no document is open, the Start Center provides an icon for opening an existing document or choosing from a list of recently-edited documents.

Open a file browser



Open a list of recently opened documents

You can also open an existing document in one of the following ways.

- Choose **File** → **Open...**
- Click the **Open** button on the main toolbar.
- Press *Control+O* on the keyboard.

In each case, the Open dialog appears. Select the file you want, and then click **Open**. If a document is already open in LibreOffice, the second document opens in a new window.

In the Open dialog, you can reduce the list of files by selecting the type of file you are looking for. For example, if you choose **Text documents** as the file type, you will only see documents Writer can open (including **.odt**, **.doc**, **.txt**); if you choose **Spreadsheets**, you will see **.ods**, **.xls**, and other files that Calc opens.

You can also open an existing document that is in an OpenDocument format by double-clicking on the file's icon on the desktop or in a file manager such as Windows Explorer.

If you have associated Microsoft Office file formats with LibreOffice, you can also open these files by double-clicking on them.



## Note

Under Microsoft Windows you can use either the LibreOffice Open and Save As dialogs or the ones provided by Microsoft Windows. See “Using the Open and Save As dialogs” on page 18.

## Saving a document

To save a new document, do one of the following:

- Press *Control+S*.
- Choose **File** → **Save** from the menu bar.
- Click the **Save** button on the main toolbar.

When the Save As dialog appears, enter the file name, verify the file type (if applicable), and click **Save**.

To save an open document with the current file name, choose **File** → **Save**. This will overwrite the last saved state of the file.

## Password protection

To protect a document from being viewable without a password, use the option on the Save As dialog to enter a password.

- 1) On the Save As dialog, select the **Save with password** option, and then click **Save**. You will receive a prompt (Figure 12).
- 2) Type the same password in both fields, and then click **OK**. If the passwords match, the document is saved password protected. If the passwords do not match, you receive an error message. Close the message box to return to the Set Password dialog and enter the password again.

## Caution



LibreOffice uses a very strong encryption mechanism that makes it almost impossible to recover the contents of a document in case you lose the password.



Figure 12: Entering a password for a document

Writer and Calc provide a second level of protection, which allows a file to be viewed but not changed without a password; that is, the file opens in read-only mode.

To protect a document from being changed:

- 1) Choose More Options from the Set Password dialog.
- 2) Enter the password in the *Enter password to allow editing* field. Repeat the password in the *Confirm password* field. Click **OK**.

## Saving a document automatically

You can choose to have LibreOffice save files for you automatically. Automatic saving, like manual saving, overwrites the last saved state of the file. To set up automatic file saving:

- 1) Choose **Tools** → **Options...** → **Load/Save** → **General**.
- 2) Mark **Save AutoRecovery information every**, and set the time interval.

## Renaming and deleting files

---

You can rename or delete files within the LibreOffice dialogs, just as you can in your usual file manager. However, you cannot copy or paste files within the dialogs.

## Using the Open and Save As dialogs

---

You can choose whether to use the LibreOffice Open and Save As dialogs or the ones provided by your operating system.

To view or change which type of dialog LibreOffice uses:

- 1) Choose **Tools** → **Options** → **LibreOffice** → **General**.
- 2) Select the **Use LibreOffice dialogs** option.

This section discusses the LibreOffice Open and Save As dialogs. Figure 13 shows the Save As dialog; the Open dialog is similar.

The three buttons in the top right of the LibreOffice Open and Save As dialogs are, from left to right:

- **Go Up One Level** in the folder (directory) hierarchy. Click and hold this button for a second to drop down a list of higher level folders; to go to one of the folders on the list, move the mouse pointer over its name and release the mouse button.
- **Create New Folder**.
- **Default Directory**.

For LibreOffice documents that have been saved with more than one version, use the **Version** drop-down to select which version you wish to open in read-only mode. For Microsoft Office documents, only the current version can be opened.

Use the **File type** field to specify the type of file to be opened or the format of the file to be saved.

The **Read-only** option on the Open dialog opens the file for reading and printing only. Consequently, most of the toolbars disappear, and most menu options are disabled. An **Edit File** button is displayed on the Standard toolbar to open the file for editing.

You can open files from the Web by typing a URL in the **File name** field on the Open dialog.

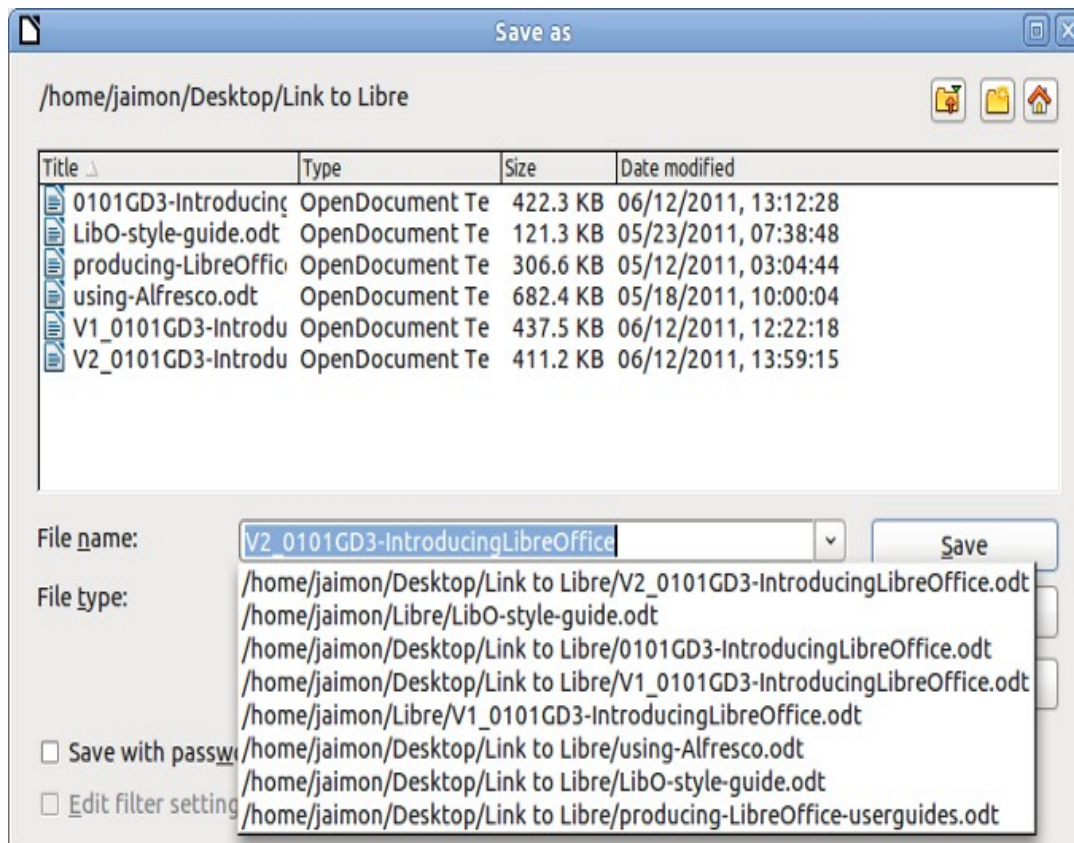



Figure 13: The LibreOffice Save as dialog

## Using the Navigator

The Navigator lists objects contained in a document, collected into categories. For example, in Writer it shows Headings, Tables, Text frames, Comments, Graphics, Bookmarks, and other items, as shown in Figure 14. In Calc it shows Sheets, Range Names, Database Ranges, Graphics, Drawing Objects, and other items. In Impress and Draw it shows Slides, Pictures, and other items.

To open the Navigator, click its icon  on the Standard toolbar, or press *F5*, or choose **View** → **Navigator** on the menu bar.

You can dock the Navigator to either side of the main LibreOffice window or leave it floating (see “Docking/floating windows and toolbars” on page 12).

Click the marker (+ or triangle) by any of the categories to display the list of objects in that category.

To hide the list of categories and show only the toolbars at the top, click the **List Box On/Off** icon



. Click this icon again to show the list box.

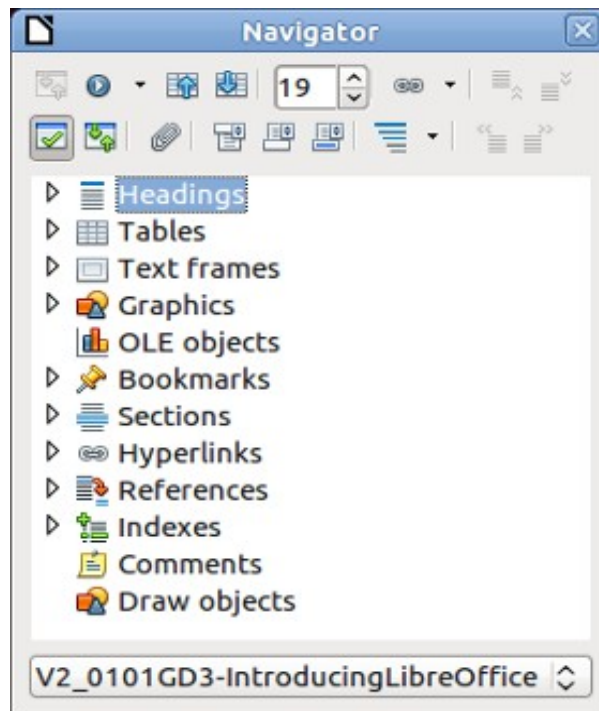



Figure 14: The Navigator


The Navigator provides several convenient ways to move around a document and find items in it:

- When a category is showing the list of objects in it, double-click on an object to jump directly to that object's location in the document.

Objects are much easier to find if you have given them names when creating them, instead of keeping LibreOffice's default graphics1, graphics2, Table1, Table2, and so on—which may not correspond to the position of the object in the document.

If you only want to see the content in a certain category, highlight the category and click the

**Content View** icon . Until you click the icon again, only the objects of that category will be displayed.

- Click the Navigation icon  (second icon from the left at the top of the Navigator) to display the Navigation toolbar. Here you can pick one of the categories and use the **Previous** and **Next** icons to move from one item to the next. This is particularly helpful for finding items like bookmarks and indexes, which can be difficult to see.

The names of the icons (shown in the tooltips) change to match the selected category; for example, **Next Graphic** or **Next Bookmark**.

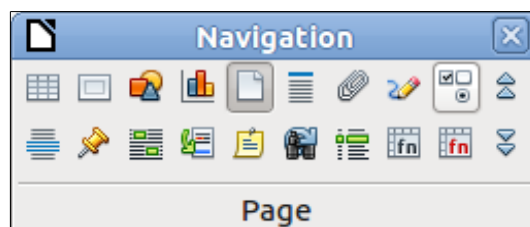



Figure 15: Navigation toolbar

- To jump to a specific page in the document, type its page number in the box at the top of the Navigator.

A bit of experimentation with the other icons will demonstrate their functions. Some component-specific uses are described in the chapters on Writer and the other components.

## Undoing and redoing changes

---

To undo the most recent change, press *Control*+*Z*, or click the **Undo** icon  on the Standard toolbar, or choose **Edit** → **Undo** from the menu bar.

The Edit menu shows the latest change that can be undone (see below for an example from Writer).

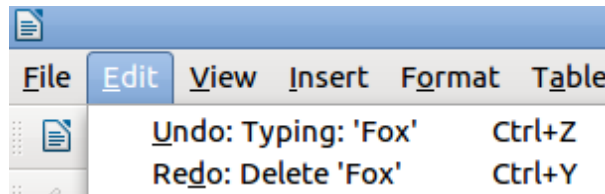


Figure 16: Edit → Undo last action

Click the small triangle to the right of the **Undo** icon to get a list of all the changes that can be undone. You can select multiple changes and undo them at the same time.

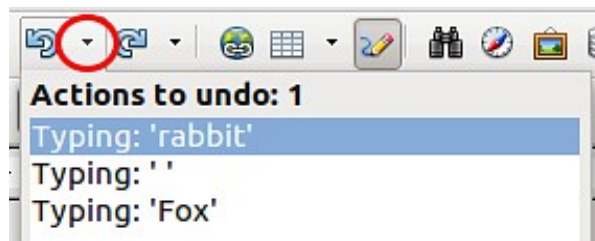



Figure 17: List of actions that can be undone

After changes have been undone, **Redo** becomes active. To redo a change, select **Edit** → **Redo**, or press *Control*+*Y* or click on the Redo icon . As with Undo, click on the triangle to the right of the arrow to get a list of the changes that can be reapplied.

To modify the number of changes LibreOffice.org remembers, choose **Tools** → **Options** → **LibreOffice** → **Memory** and in the Undo section change **Number of steps**. Be aware that asking LibreOffice to remember more changes consumes more computer memory.

## Closing a document

---

To close a document, choose **File** → **Close**.

You can also close a document by clicking on the **Close** icon on the document window. This button looks like the X shown in Figure 18. It may be in a different location on your operating system.



Figure 18. Close icons

If more than one LibreOffice window is open, each window looks like the sample shown on the left in Figure 18. Closing this window leaves the other LibreOffice windows open.

If only one LibreOffice window is open, it looks like the sample shown on the right in Figure 18. Notice the small x below the large X. Clicking the small x closes the document but leaves LibreOffice open. Clicking the large X closes LibreOffice completely.

If the document has not been saved since the last change, a message box is displayed. Choose whether to save or discard your changes.

- **Save:** The document is saved and then closed.
- **Discard:** The document is closed, and all modifications since the last save are lost.
- **Cancel:** Nothing happens, and you return to the document.

### Caution



Not saving your document could result in the loss of recently made changes, or worse still, your entire file.

## Closing LibreOffice

To close LibreOffice completely, choose **File** → **Exit**, or close the last open document as described in “Closing a document” above.

If all the documents have been saved, LibreOffice closes immediately. If any documents have been modified but not saved, a warning message appears. Follow the procedure in “Closing a document” to save or discard your changes.

## Using LibreOffice on a Mac

Some keystrokes and menu items are different on a Mac from those used in Windows and Linux. The following table gives some common substitutions for the instructions in this book. For a more detailed list, see the application Help.

<i>Windows/Linux</i>	<i>Mac equivalent</i>	<i>Effect</i>
<b>Tools</b> → <b>Options</b> menu selection	<b>LibreOffice</b> → <b>Preferences</b>	Access setup options
Right-click	Control+click	Opens a context menu
Ctrl (Control)	⌘ ( <i>Command</i> )	Used with other keys
F5	Shift+⌘+F5	Opens the Navigator
F11	⌘+T	Opens the Styles and Formatting window