



**LibreOffice**  
Community



## Writer Guide 7.5

# *Chapter 14, Mail Merge*

*Form Letters, Mailing Labels, and Envelopes*

## Copyright

---

This document is Copyright © 2023 by the LibreOffice Documentation Team. Contributors are listed below. You may distribute it and/or modify it under the terms of either the GNU General Public License (<https://www.gnu.org/licenses/gpl.html>), version 3 or later, or the Creative Commons Attribution License (<https://creativecommons.org/licenses/by/4.0/>), version 4.0 or later.

All trademarks within this guide belong to their legitimate owners.

## Contributors

### To this edition

Jean Hollis Weber                      Kees Kriek

### To previous editions

Jean Hollis Weber                      Kees Kriek                      Felipe Viggiano  
Bruce Byfield                              Gillian Polack                      Ron Faile Jr.  
John A Smith

## Feedback

Please direct any comments or suggestions about this document to the Documentation Team’s forum at <https://community.documentfoundation.org/c/documentation/loguides/> (registration is required) or send an email to: [loguides@community.documentfoundation.org](mailto:loguides@community.documentfoundation.org). Emails sent to the forum are moderated.



### Note

Everything you send to a forum, including your email address and any other personal information that is written in the message, is publicly archived and cannot be deleted.

## Publication date and software version

Published February 2023. Based on LibreOffice 7.5.

## Using LibreOffice on macOS

Some keystrokes and menu items are different on macOS from those used in Windows and Linux. The table below gives some common substitutions for the instructions in this document. For a detailed list, see the application Help.

<i>Windows or Linux</i>	<i>macOS equivalent</i>	<i>Effect</i>
<b>Tools &gt; Options</b> menu selection	<b>LibreOffice &gt; Preferences</b>	Access setup options
Right-click	<i>Control</i> +click or right-click depending on computer setup	Open a context menu
<i>Ctrl</i> (Control)	⌘ (Command)	Used with other keys
<i>Alt</i>	⌥ (Option) or <i>Alt</i> , depending on keyboard	Used with other keys
<i>F11</i>	⌘+T	Open Styles deck in Sidebar

## Contents

---

<b>Copyright.....</b>	<b>2</b>
Contributors.....	2
Feedback.....	2
Publication date and software version.....	2
Using LibreOffice on macOS.....	2
<b>What is mail merge?.....</b>	<b>4</b>
<b>Creating and registering an address data source.....</b>	<b>4</b>
<b>Creating a form letter.....</b>	<b>6</b>
Suppressing blank lines (optional).....	8
Saving merged documents.....	9
<b>Printing mailing labels.....</b>	<b>10</b>
Preparing for printing.....	10
Printing.....	12
Editing a saved file of mailing labels.....	12
<b>Printing envelopes.....</b>	<b>12</b>
Setting up envelopes for printing.....	13
Merging and printing the envelopes.....	13
<b>Using the Mail Merge Wizard to create a form letter.....</b>	<b>14</b>
Step 1: Select starting document.....	14
Step 2: Select document type.....	15
Step 3: Insert address block.....	15
Selecting the data source (address list).....	16
Selecting and optionally editing the address block.....	17
Matching the fields.....	18
Step 4: Create salutation.....	19
Step 5: Adjust layout.....	21

## What is mail merge?

---

Writer's mail merge provides features to create and print multiple copies of one item (such as return address labels, promotional stickers, or t-shirt transfers) or to produce copies that include variable information (for example names, addresses, and amounts due):

- Form letters (a document to send to a list of recipients)
- Mailing labels, labels for physical file folders, and similar purposes
- Envelopes

Variable data is typically derived from a data source, as discussed below. If all output is to be the same (for example, return address labels), the merge can use manually entered text or images.

This chapter describes the mail merge process. The steps include:

- 1) Create and register a data source.
- 2) Create and print form letters, mailing labels, and envelopes.
- 3) Optionally, save the output in an editable file instead of printing it directly.

## Creating and registering an address data source

---

An address data source is a database containing the name and address records from which mailing labels and envelopes can be derived. LibreOffice can create the database from spreadsheets, text files including Writer documents, and databases such as MySQL. If the information to be used in the mail merge is currently in a format that LibreOffice cannot access directly, you need to convert it, for example by exporting to a comma-separated values (CSV) file.

For a data source to be directly accessible from within a Writer document, it must be registered. You need to do this only once.

- 1) From within a Writer document, or from the LibreOffice Start Center, choose **File > Wizards > Address Data Source**.
- 2) The choices on the first page of the wizard (Figure 1) vary with your operating system. Select the appropriate type of external address book. For a spreadsheet, it is **Other external data source**. Depending on your choice, the list of steps on the left may change. Click **Next**.

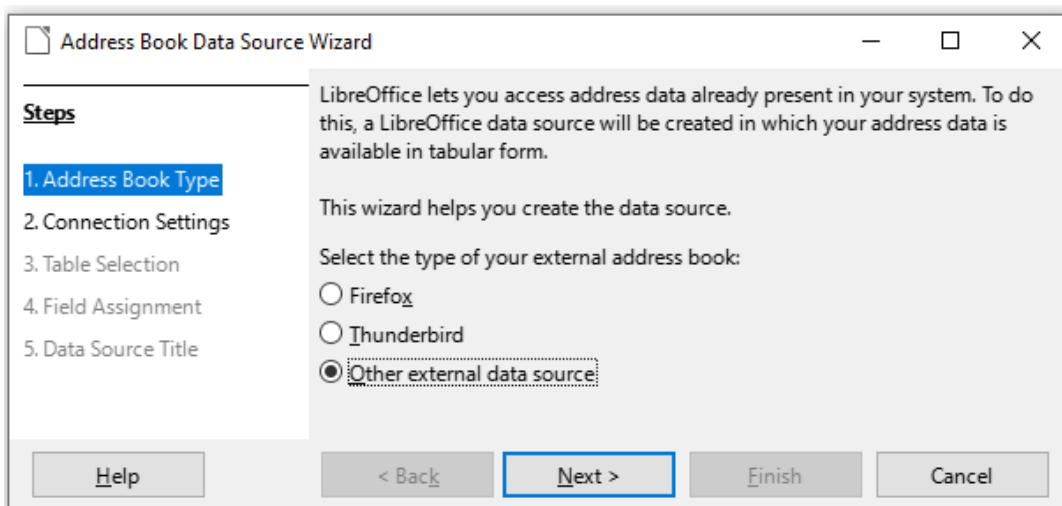


Figure 1: Select type of external address book

- 3) On the next page of the Wizard (Figure 2), click on the **Settings** button.

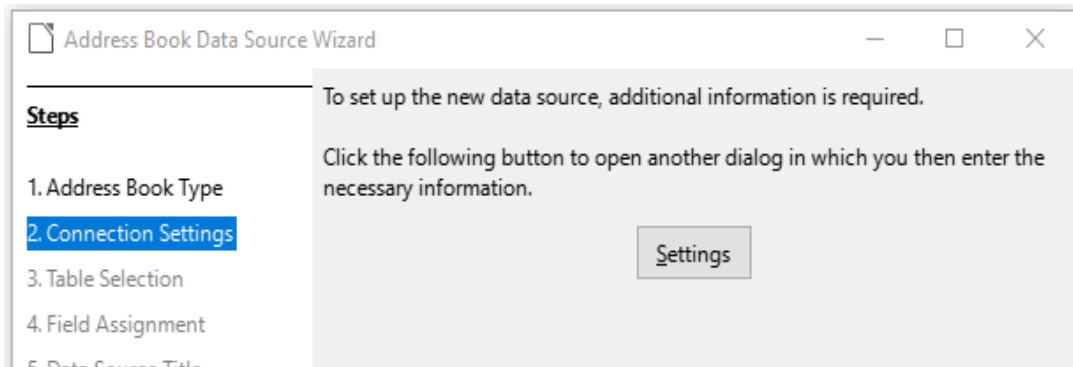


Figure 2: Starting the Settings part of the Wizard

- 4) On the *Create Address Data Source* page (Figure 3), select the Database type. In our example, it is **Spreadsheet**. Click **Next**.

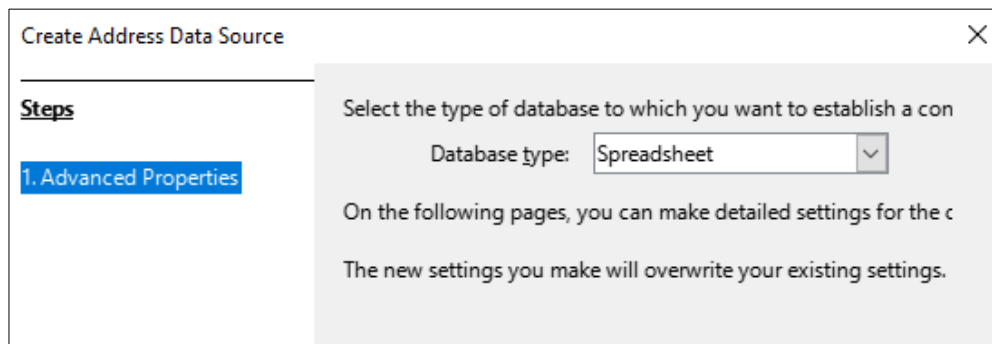


Figure 3: Selecting the database type

- 5) On the next page (Figure 4), click **Browse** and navigate to the spreadsheet that contains the address information. Select the spreadsheet and click **Open** to return to this dialog.

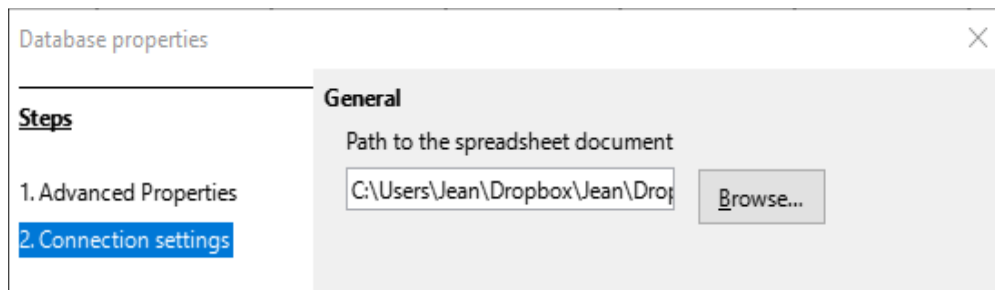


Figure 4: Selecting the spreadsheet document

- 6) To test that the connection has been correctly established, click the **Test Connection** button in the lower right of the dialog (not shown in Figure 4). You should get the message *The connection was established successfully*; otherwise, you will get an error message.
- 7) Click **Finish**.
- 8) On the next page (Figure 5), click **Next**. You do not need to click the **Field Assignment** button. (When you are using the Mail Merge Wizard, you may need to do the Field Assignment step; see page 18.)

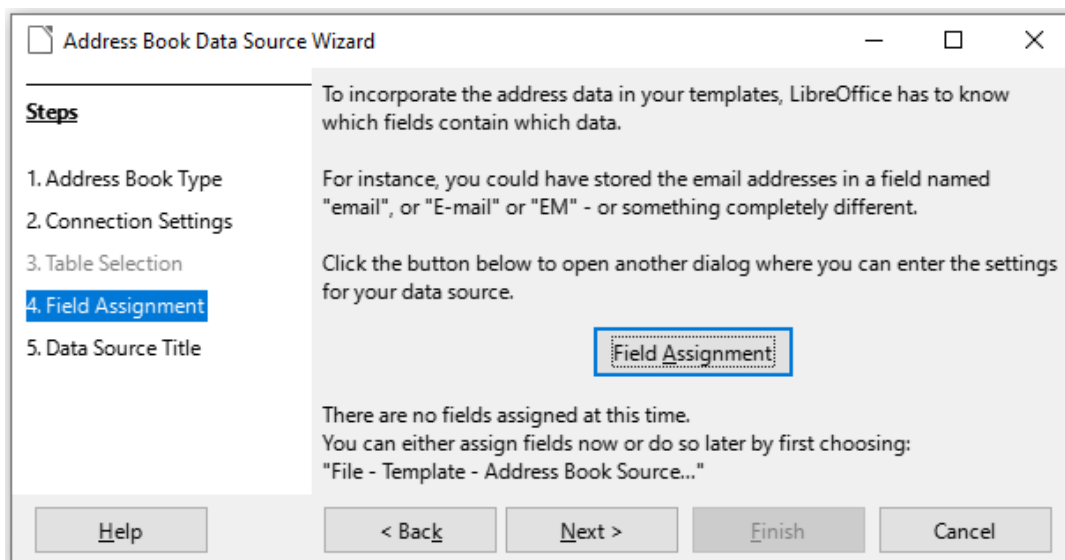


Figure 5: For a spreadsheet, do not click the Field Assignment button

- 9) On the Data Source Title page (Figure 6), the name and location of the new database (.odb) is shown in the *Location* field. You can change this name or store the database file in a different location; deselect *Embed this address book definition into the current document*, then click **Browse** to choose the location and name the file.

You can also change the name in the *Address book name* field. This is the registered name, which LibreOffice displays in data source listings. In our example, the name *Addresses* was used for both.

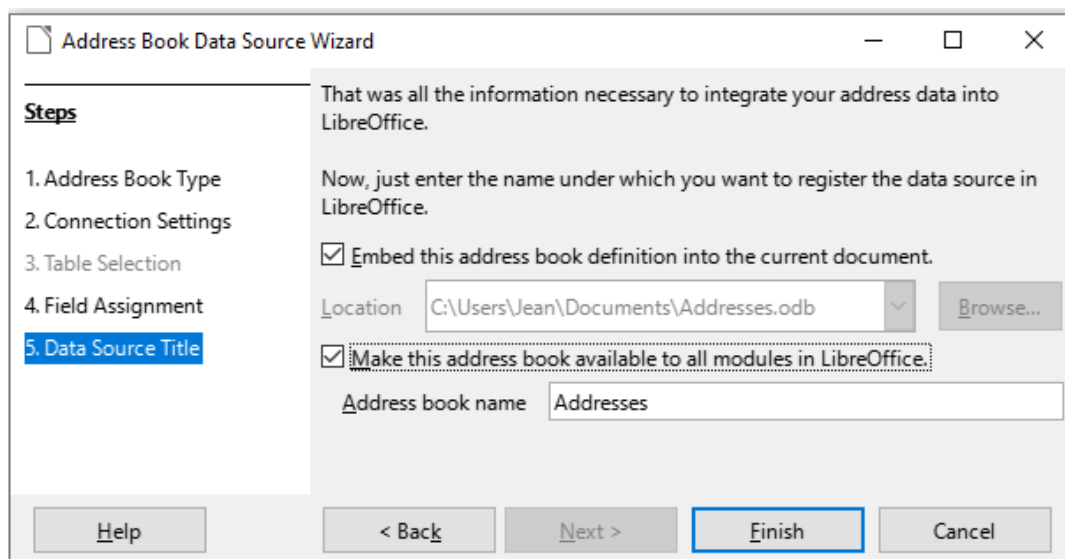


Figure 6: Name the file and the address book

- 10) Click **Finish**. The data source is now registered.

## Creating a form letter

You can create a form letter manually—the simplest and most comprehensive method, which is described here—or you can use the Mail Merge wizard starting on page 14.

- 1) Create a new Writer document (**File > New > Text Document**) or open an existing form letter with **File > Open**.

- 2) Display the registered data sources: **View > Data Sources** (or press *Shift+Ctrl+F4*).
- 3) Find the data source that you wish to use for the form letter, in this case *Addresses*. Expand this folder and the *Tables* folder, and select *Sheet1*. The address data file is displayed.

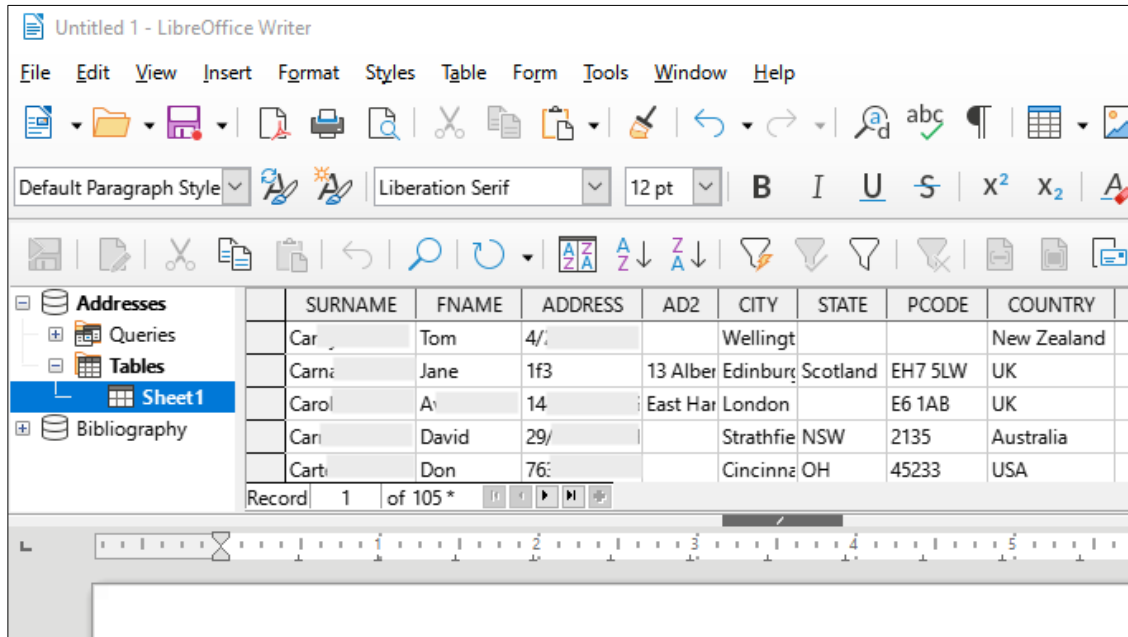


Figure 7: Selecting the data source

- 4) Now create or modify the form letter by typing in the text, punctuation, line breaks, and so on that will be present in all of the letters.

To add the mail-merge fields where needed (such as names and addresses), click in the field heading and drag it to the appropriate point in the letter. Be sure to add spaces or other punctuation as needed. Press *Enter* at the end of each line in the address block.

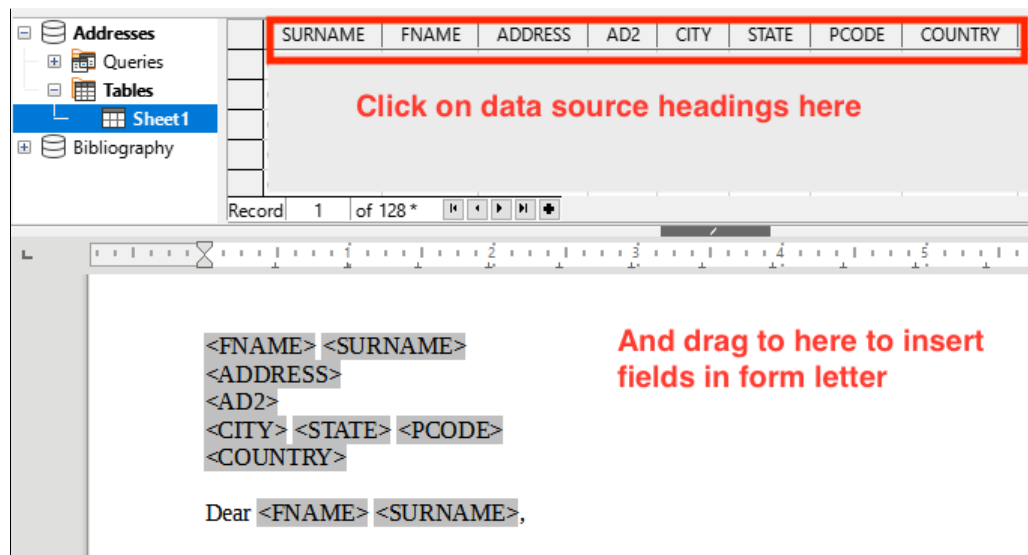


Figure 8: Dragging fields to the body of the form letter

- 5) Our example database (Figure 7) contains a field for a second address line (*AD2*) that is blank for some addresses. If you wish to remove any blank lines that may appear in the address block when the letters are printed, you can use the procedure described in “Suppressing blank lines (optional)” on page 8. Otherwise, continue to the next step.

- 6) The document is now ready to be printed.
- a) Choose **File > Print** and click **Yes** in the message box.

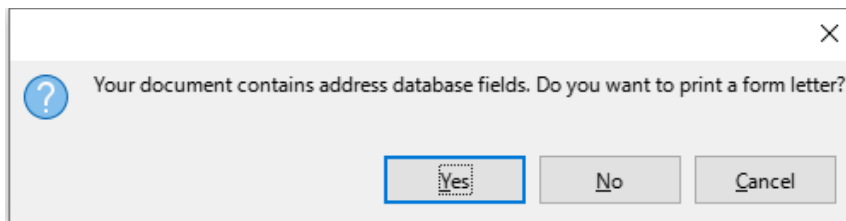


Figure 9: Mail merge confirmation message

- b) In the Mail Merge dialog (Figure 10), in the *Records* section, you can choose to print all records or selected records. To select individual records to be printed, *Ctrl+click* on each one. To select a block of records, select the first record in the block, scroll to the last record in the block, and *Shift+click* on the last record. You can also specify a range of record numbers to print.
- c) To send the letters directly to the printer, select **Printer** in the Output section and click **OK**. Or, you can save the letters to a file for further editing or formatting; see “Saving merged documents” on page 9.
- d) If you have not saved the original, prototype form letter document (template) previously, then you should do so now. Having a form letter template could greatly simplify the creation of other form letters and is highly recommended.

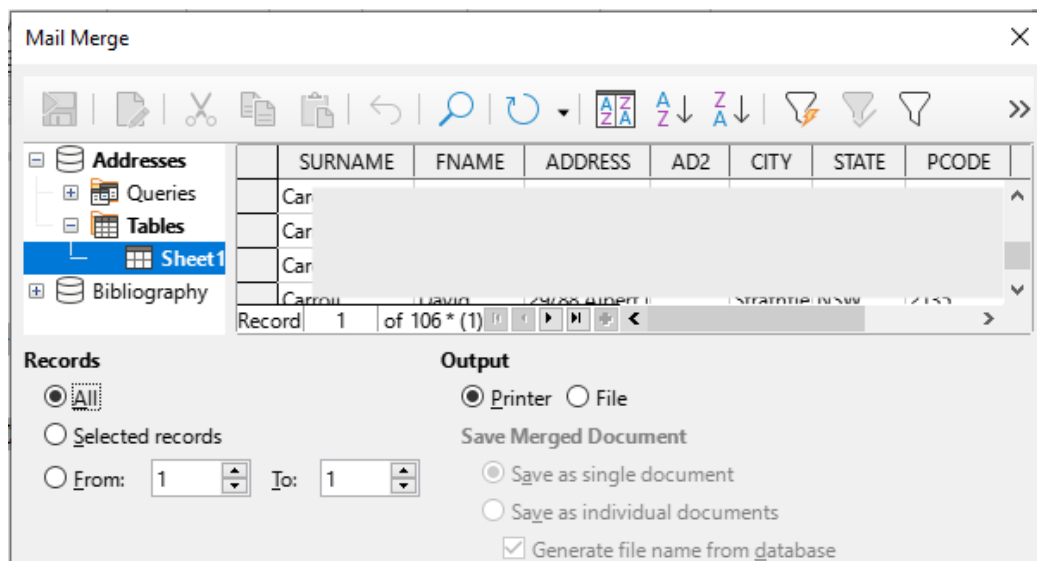


Figure 10: The Mail Merge dialog

## Suppressing blank lines (optional)

If you wish to suppress blank lines, follow this procedure:

- 1) Click at the end of a paragraph to be suppressed if empty, and then choose **Insert > Field > More Fields** to display the Fields dialog.
- 2) Select the *Functions* tab and then choose **Hidden Paragraph** in the *Type* column.

### ✓ Note

When using the Mail Merge Wizard (page 14), you can select automatic suppression of blank lines and avoid the work described in this step.



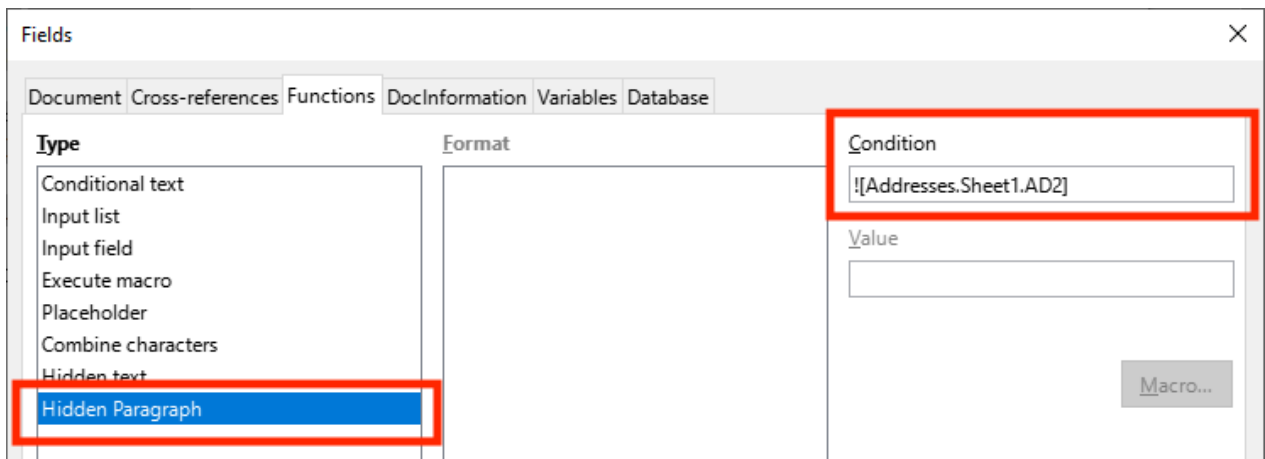


Figure 11: Defining a conditional hidden paragraph

- 3) Now click in the **Condition** box and enter the details of the condition that defines a blank address field. It has the general form of:

`! [Database .Table .Database field]`

For example, in our database the condition to test if the AD2 field is empty would be:

`! [Addresses .Sheet1 .AD2]` as illustrated in Figure 11.

Alternative ways to express this condition include `NOT Addresses .Sheet1 .AD2` and `Addresses .Sheet1 .AD2 EQ ""`.

- 4) Click **Insert**.

## Saving merged documents

You may prefer to save the letters in a file, to allow for proofreading or formatting. To do this:

- 1) In the Mail Merge dialog (Figure 10), select the records to be included, then select **File** in the *Output* section to activate some other choices on the page (Figure 12).
- 2) You can choose whether to save the output as a single document (containing all of the letters) or save the letters as individual documents; and you can specify the name, location, and format of the files.

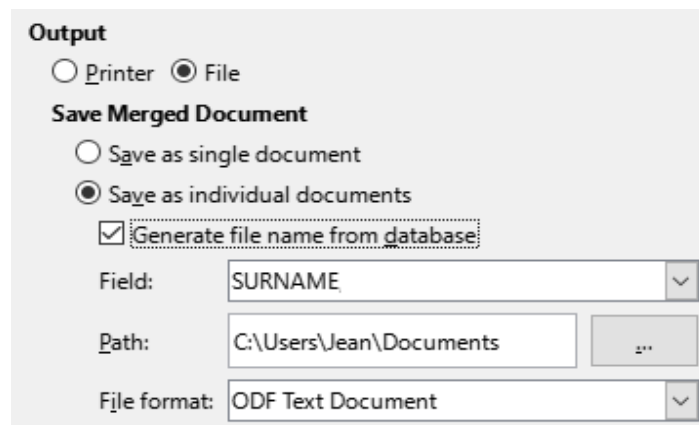


Figure 12: Saving output to a file

- 3) Click **OK**. In the Save as dialog, enter a file name for the saved letters and choose a folder in which to save them. The letters will be saved consecutively as separate pages in the single document, or numbered consecutively in individual files.

You can now open the letters and edit them individually as you would edit any other document.

## Printing mailing labels

Labels are commonly used for printing address lists (where each label shows a different address), but they can also be used for making multiple copies of one label only, for example return-address stickers, or labels for CDs/DVDs or other items.

Before beginning this process, note the brand and type of labels you intend to use. You can also define your own label size; see Step 6).

### Tip

If you are printing the same information on each label, you may find the Business Cards dialog useful. Access it through **File > New > Business Cards**. The Labels and Business Cards dialogs are very similar.

## Preparing for printing

To prepare mailing labels for printing:

- 1) Choose **File > New > Labels**. The Labels dialog opens.
- 2) On the *Labels* page (Figure 13), select the *Database* and *Table*.
- 3) From the Database field drop-down list, select the first field to be used in the label (in this example, FNAME), then click the left arrow button to move it to the Label text area.
- 4) Continue adding fields and inserting desired punctuation, spaces, and line (paragraph) ends until the label is composed. Figure 13 shows the completed label.

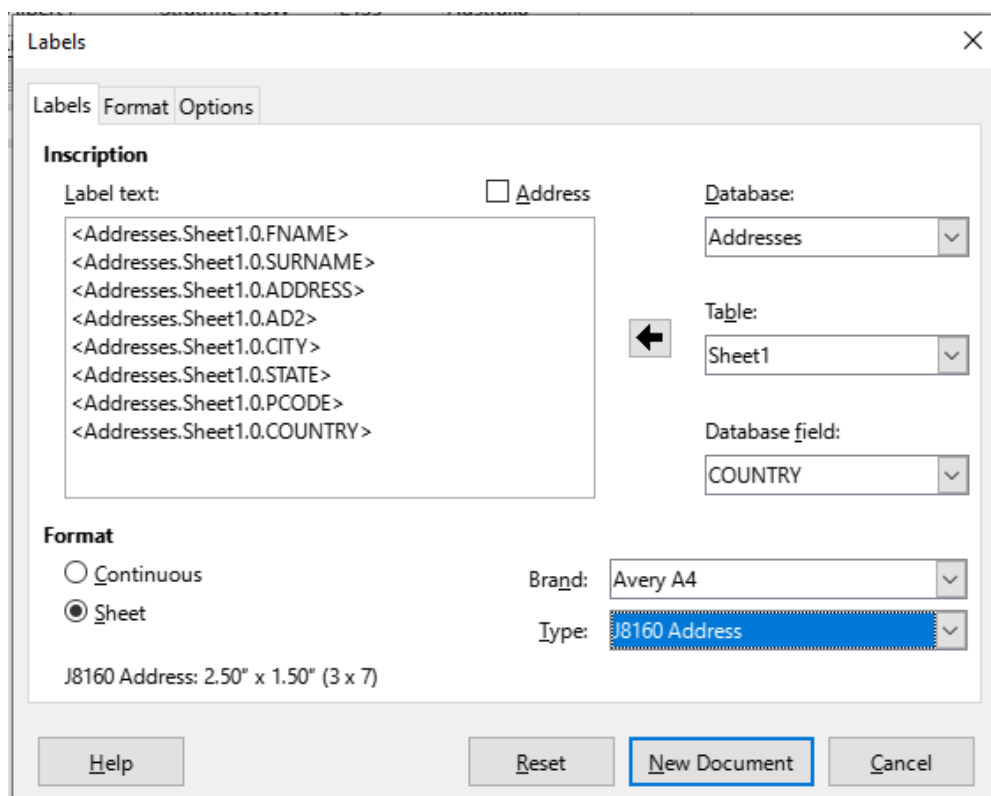


Figure 13: The completed label

On some operating systems, a scroll bar will appear below the *Label text* box and you can see where the paragraph ends are located. On others (as in the example), the fields may appear in a list and you cannot see where the paragraph ends are located. You can check them later in the procedure (Step 8)).

- 5) Select the label stock in the *Brand* drop-down list. The types for that brand then appear in the *Type* drop-down list. Select the size and type of labels required, and then go to Step 7). If your label sheets are not listed, go to Step 6).
- 6) To define labels that are not on the list:
  - a) Select **[User]** in the **Type** box on the *Labels* page. Then, click the *Format* page of the Labels dialog (Figure 14). Measure on your labels those dimensions illustrated and enter them into the respective boxes on the left side.
    - *Horizontal pitch* is the distance between the left edges of adjacent labels.
    - *Vertical pitch* is the distance between the upper edge of a label and the upper edge of the label directly below.

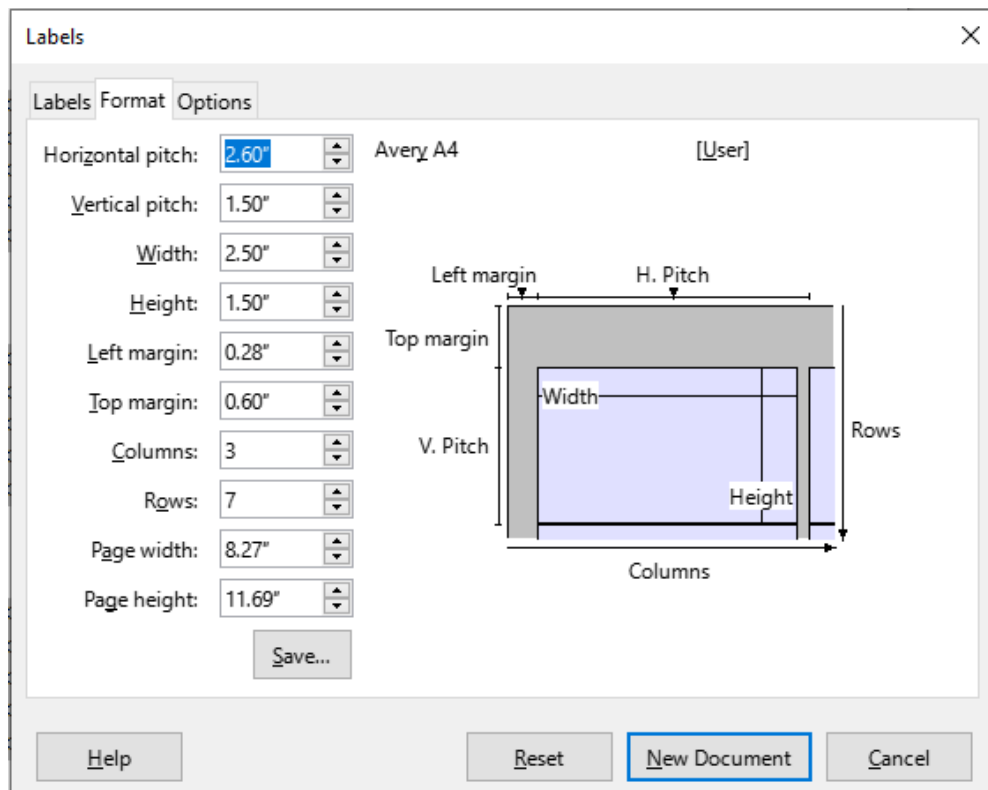


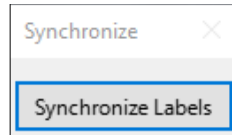
Figure 14: Specify settings, if necessary

- b) You can now save the label template if you are likely to use it again. Click **Save**.
  - c) In the Save Label Format dialog that pops up, type names for your label Brand and Type. Click **OK**.
- 7) On the *Options* tab of the Labels dialog (Figure 15), select **Synchronize contents**.



Figure 15: Options tab of the Labels dialog

- 8) Click **New Document**. You now have a one-page document containing a series of frames, one for each label of the selected type and filled with the data source address fields that you selected. Although this document appears to have only one page of labels, the printed or saved output will be expanded to include enough pages for all of the selected records from the data source.
- 9) In this document you can see the paragraph ends if you use the **Toggle Formatting Marks** toolbar button or **View > Formatting Marks** on the Menu bar.
- 10) You should also see a small window containing a **Synchronize Labels** button, usually in the upper left corner of the screen.



- 11) If any paragraph ends or other punctuation are missing, or if you wish to change the font or other characteristics of one or more fields or lines (paragraphs) of all the labels, you can do so now. In the upper left label, select the field(s) that you wish to change, then change them manually or by selecting a paragraph style or character style. Add any missing punctuation. Then click the **Synchronize Labels** button to automatically add these changes to all of the labels.

## Printing

- 1) Choose **File > Print**. The message shown in Figure 9 appears. Click **Yes** to print.
- 2) In the Mail Merge dialog (Figure 10), you can choose to print all records or selected records. To select records to be printed, use *Ctrl+click* to select individual records. To select a block of records, select the first record in the block, scroll to the last record in the block, and *Shift+click* on the last record.
- 3) Click **OK** to send the labels directly to the printer. If you prefer to save the labels to a file, then select **File** in the *Output* section, where **Save as single document** is preselected. In this case, clicking **OK** opens the Save As dialog, where you can enter a file name and location, as described in Step 6) on page 8.

### Note

Blank lines in addresses on labels are suppressed automatically, as they are when using the Mail Merge Wizard (page 14).

---

## Editing a saved file of mailing labels

To edit a saved file of mailing labels, open the file in the same way as any other Writer document.

You can edit individual records manually (for example, to correct a spelling error without needing to change the source spreadsheet and regenerate the labels), but you cannot edit all labels at once (for example, to change the font used) by a manual technique. However, you can edit the paragraph and/or character styles associated with the label records:

- 1) Right-click in a label record. Choose **Paragraph > Edit Style** in the context menu.
- 2) Then in the Paragraph Style dialog, you can make changes to the font name, the font size, the indents, and other attributes.

## Printing envelopes

Instead of printing mailing labels, you may wish to print directly onto envelopes.

The production of envelopes involves two steps, setup and printing. For general instructions on setting up envelopes for printing using the Format and Printer pages of the Envelope dialog, see Chapter 7, Printing, Exporting, Emailing, and Signing.

To produce a single envelope, you can type or paste the name and address into the Addressee box, or you can get information from an address data source as described in this section.

### Setting up envelopes for printing

- 1) Choose **Insert > Envelope** on the Menu bar.
- 2) On the *Envelope* tab of the Envelope dialog (Figure 21), choose whether to add Sender information (the “from” address) to the envelope. If so, type the information in the *Sender* box. If you’re using envelopes preprinted with sender information, either leave this box empty or deselect the **Sender** checkbox.

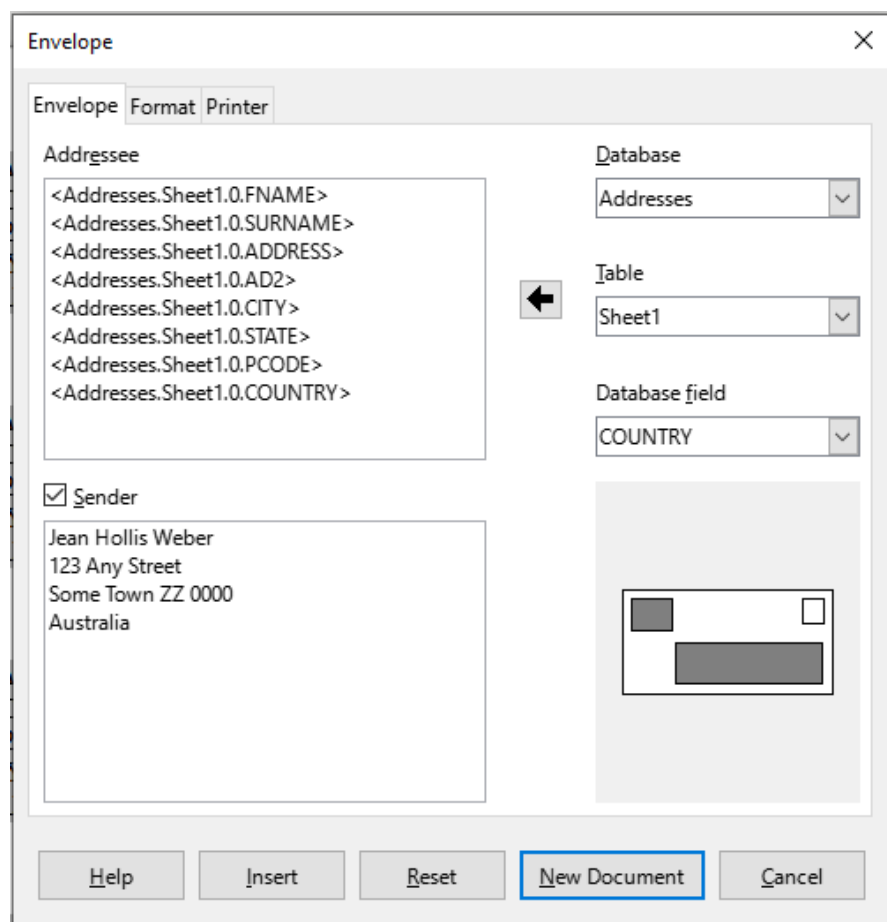


Figure 16: Choosing addressee and sender information for envelopes

- 3) Create the *Addressee* fields by dragging and dropping from the data source headings, as described in “Printing mailing labels” on page 10, then click the **New Document** button to create the envelope template.

Alternatively, click **New Document**, open the Data Sources window above the envelope template, then drag the data source headings into the *Addressee* box on the envelope.

- 4) At this point you may wish to save this document as a template.

## Merging and printing the envelopes

To merge addresses and print the envelopes:

- 1) Choose **File > Print**. The message shown in Figure 9 appears. Click **Yes** to print.
- 2) The Mail Merge dialog (Figure 10) appears. As with form letters and mailing labels, you can choose to print envelopes for one, several, or all address records in the database.
- 3) Make your selections and then click **OK** to print direct to the printer. To check the envelopes before printing them, see “Saving merged documents” on page 9 for instructions. Blank lines are automatically suppressed.

## Using the Mail Merge Wizard to create a form letter

The manual method of creating a form letter is described in “Creating a form letter” on page 6. If you prefer to use the Mail Merge wizard, the technique is described in this section.

Open a new document with **File > New > Text Document** and choose **Tools > Mail Merge Wizard** on the Menu bar.

### Step 1: Select starting document

The Mail Merge Wizard (Figure 17) gives several options for the starting document:

- Use the current document
- Create a new document
- Start from existing document
- Start from a template
- Start from a recently saved starting document

For the purposes of this example, we opened a new text document.

Select **Use the current document** and click **Next**.

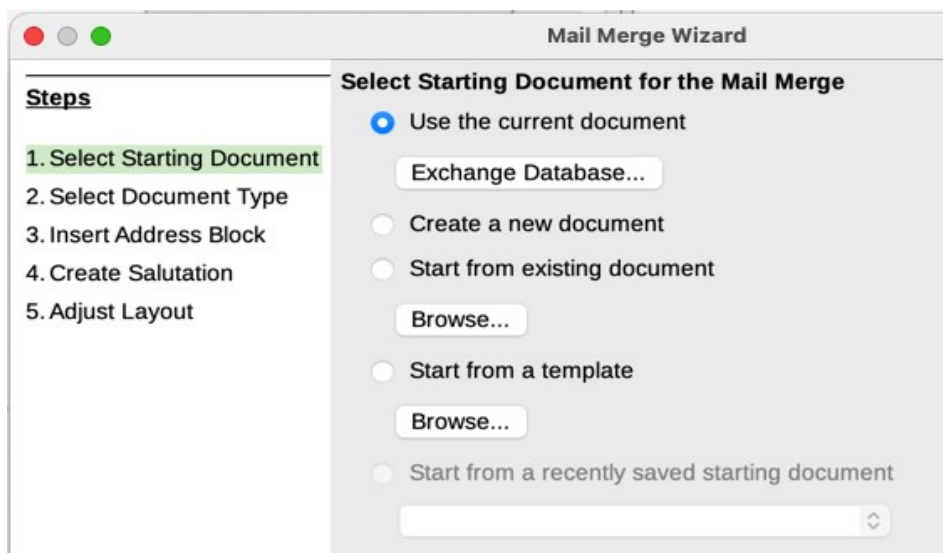


Figure 17: Select starting document

If the current document does not have a registered data source associated, a warning message is displayed. Click the **Exchange Database** button to open the Exchange Databases dialog (Figure 18) and select the required database from the *Available Databases* list. If necessary, click the **Browse** button to open a file browser and find the required database to register. Click **Define** to close the dialog and associate the selected database with the document.

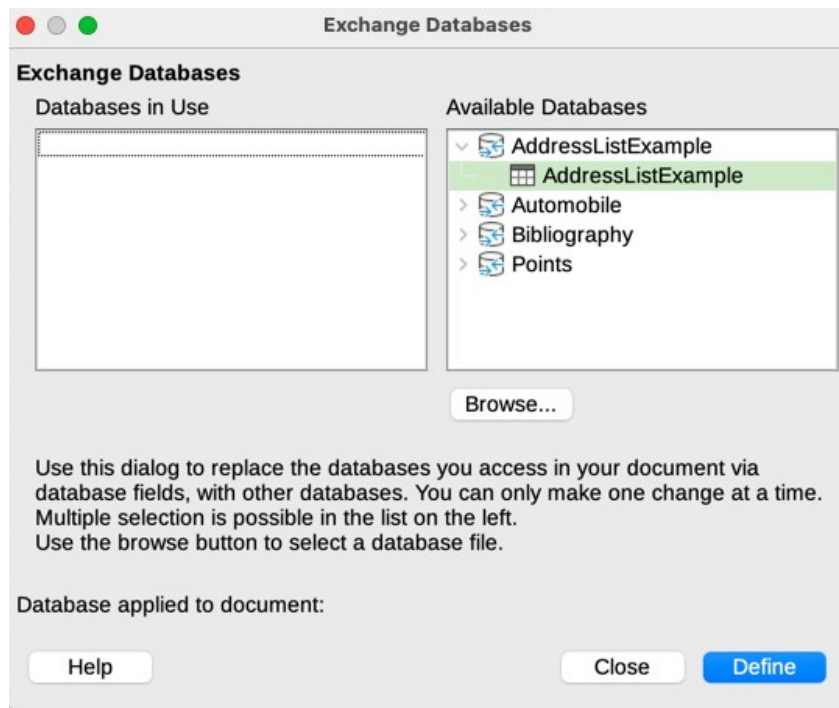


Figure 18: Exchange Databases dialog

## Step 2: Select document type

The wizard can produce letters or email messages. In this example, we are producing a letter. Select Letter and click Next.

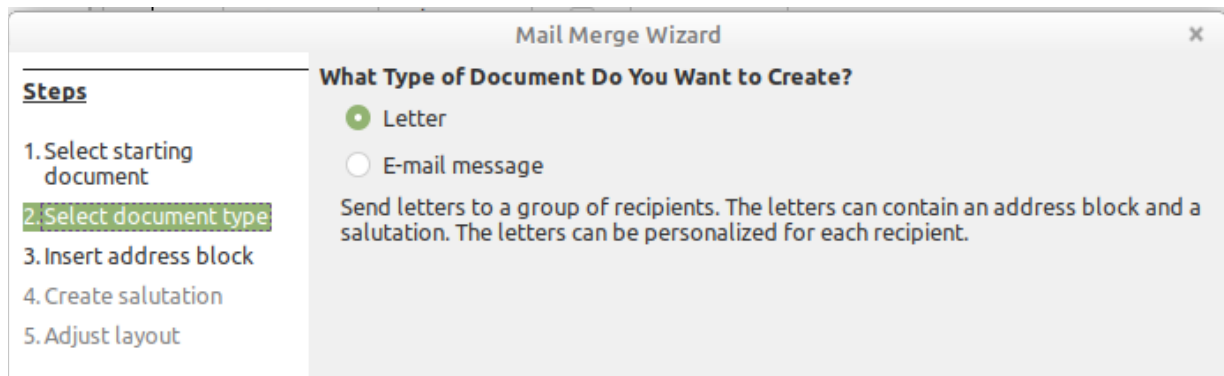


Figure 19: Choose document type

## Step 3: Insert address block

This is the most complex step in the wizard. In this step (Figure 20) you will do three things:

- 1) Tell the wizard which data source to use. The data source must be an existing file.
- 2) Select the address block to use in the document. This means choosing which fields appear (for example, whether the country is included) and how they look.
- 3) Make sure that the fields all match correctly. This is very important. For example, the UK English version of the wizard has a field called <Surname>. If your spreadsheet has a column called “Last Name”, you need to tell the wizard that <Surname> and “Last Name” are equivalent. This is described in “Matching the fields” on page 18.

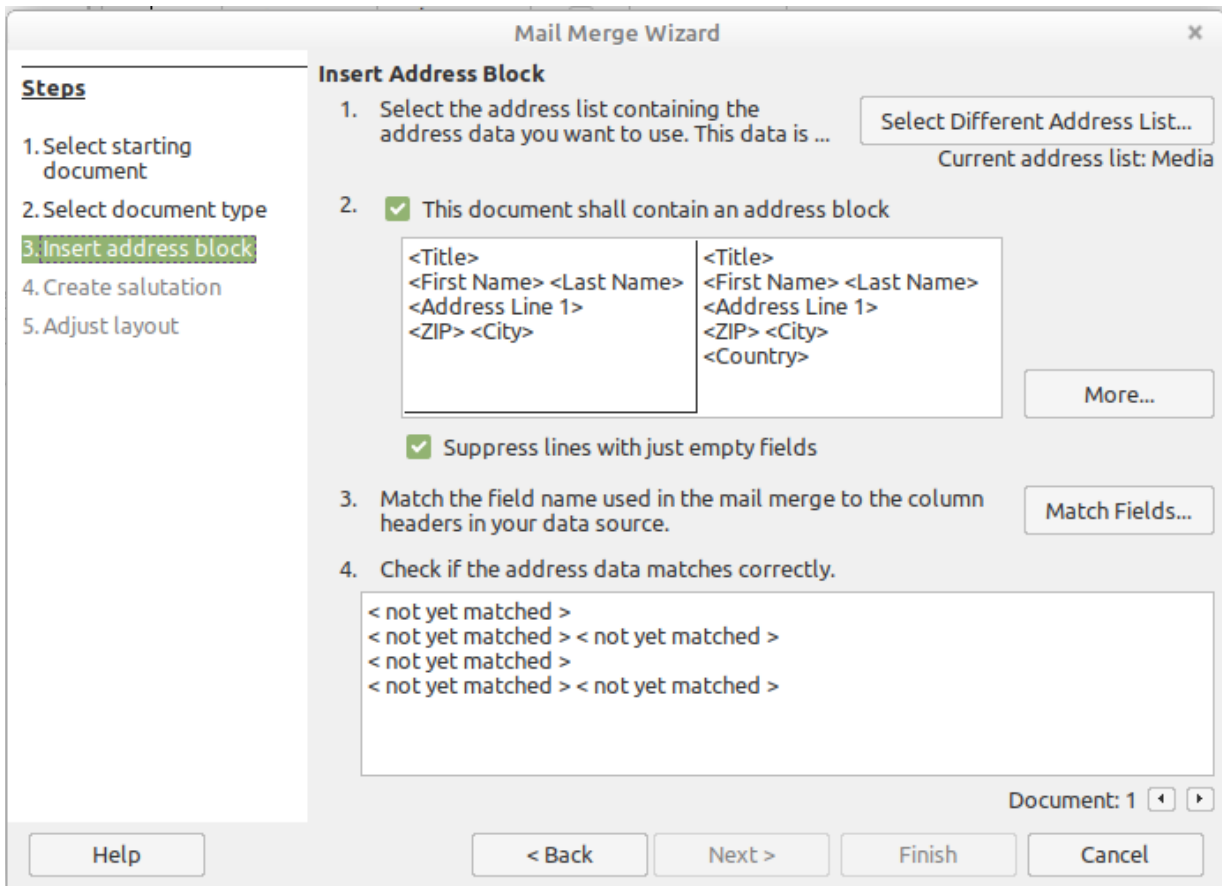


Figure 20: Insert address block

### Selecting the data source (address list)

- 1) If the current address list, identified beneath the **Select Different Address List** button in section 1 (Figure 20), is not the one you wish to use, click the button to open the Select Address List dialog (Figure 21) for choosing a data source.

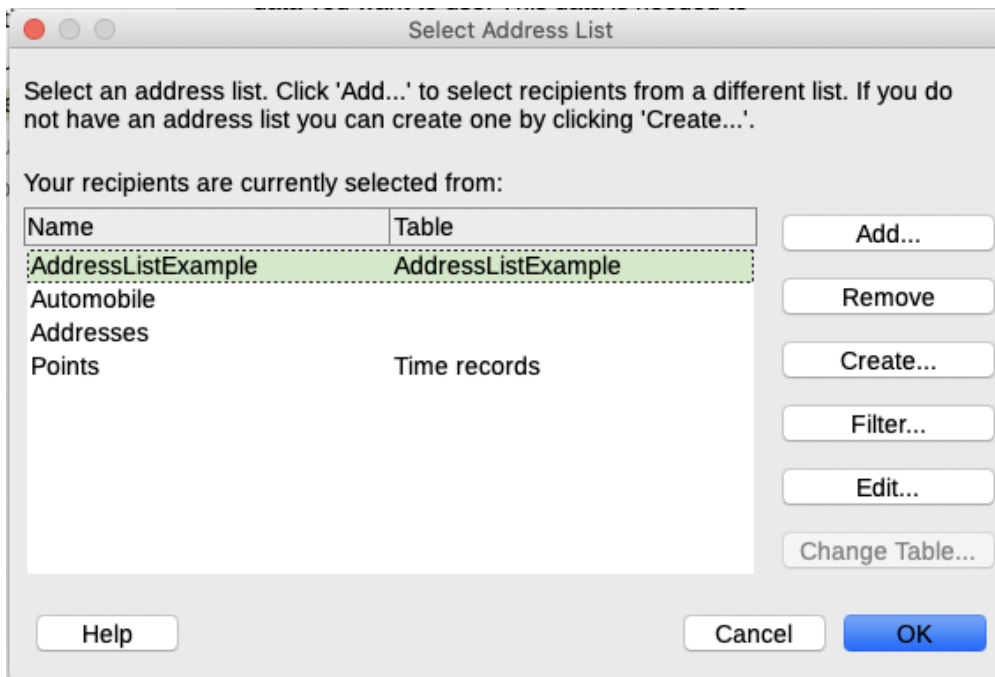


Figure 21: Select address list dialog



If you have not already created the address list, you may click **Create** to do so now. This step will allow you to create a .csv (Comma Separated Values) file with a new list of address records. If you have an address list that is not registered in LibreOffice, but which you wish to use, click **Add** and select the file from the location in which it is saved.

In each of these cases a new data source (.odb file) will be created and registered.

- 2) Select the address list and click **OK** to return to the Insert Address Block dialog. We retain Addresses as our address book for this example. The wizard can also exclude certain records; click **Filter** to choose them.

### Selecting and optionally editing the address block

- 1) In section 2 (Figure 20), select the address block to appear on the letter, define its appearance, and choose the fields it contains. The main page gives two choices. Click More to open the Select Address Block dialog for more choices.
- 2) The Select Address Block dialog (Figure 22) displays the original two blocks plus other choices for the format of the address block (you may need to scroll down to see all of the choices). You can also optionally include or exclude the country (for example, only include the country if it is not England) in the *Address Block Settings* section. The formats provided are relatively common, but they might not exactly match your preference. If this is the case, select the address block that is closest to what you want and click Edit, which opens the Edit Address Block dialog.
- 3) In the Edit Address Block dialog (Figure 23), you can add or delete address elements using the arrow buttons between the boxes. To move elements around, use the arrow buttons on the right. For example, to add an extra space between the first and the last names in Figure 23, click <Last Name> and then click the **Move right** arrow button on the right-hand side.

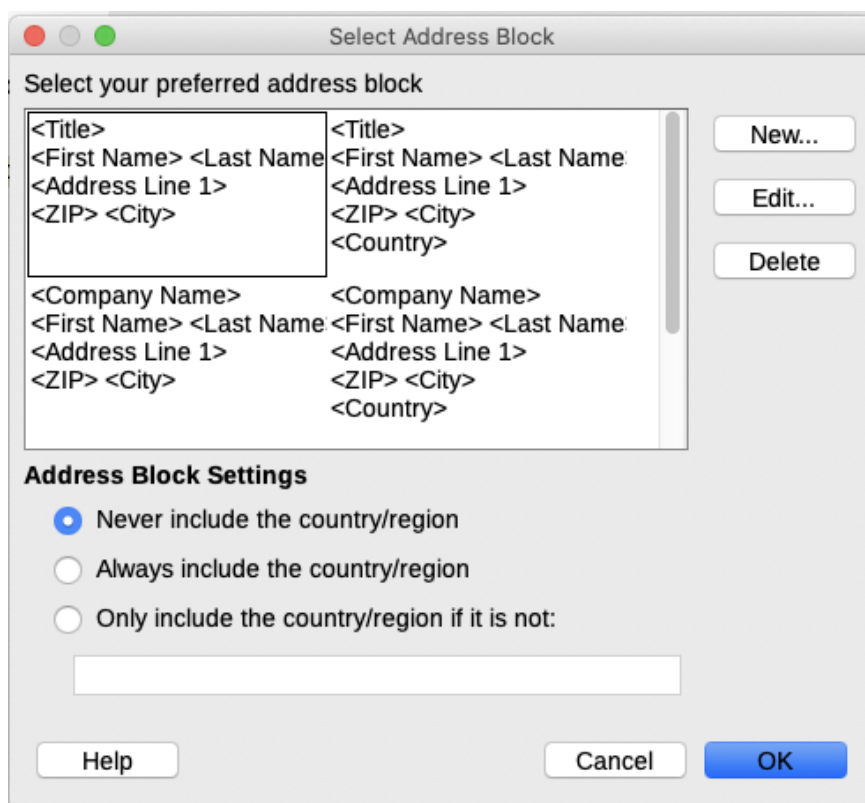


Figure 22: Select address block

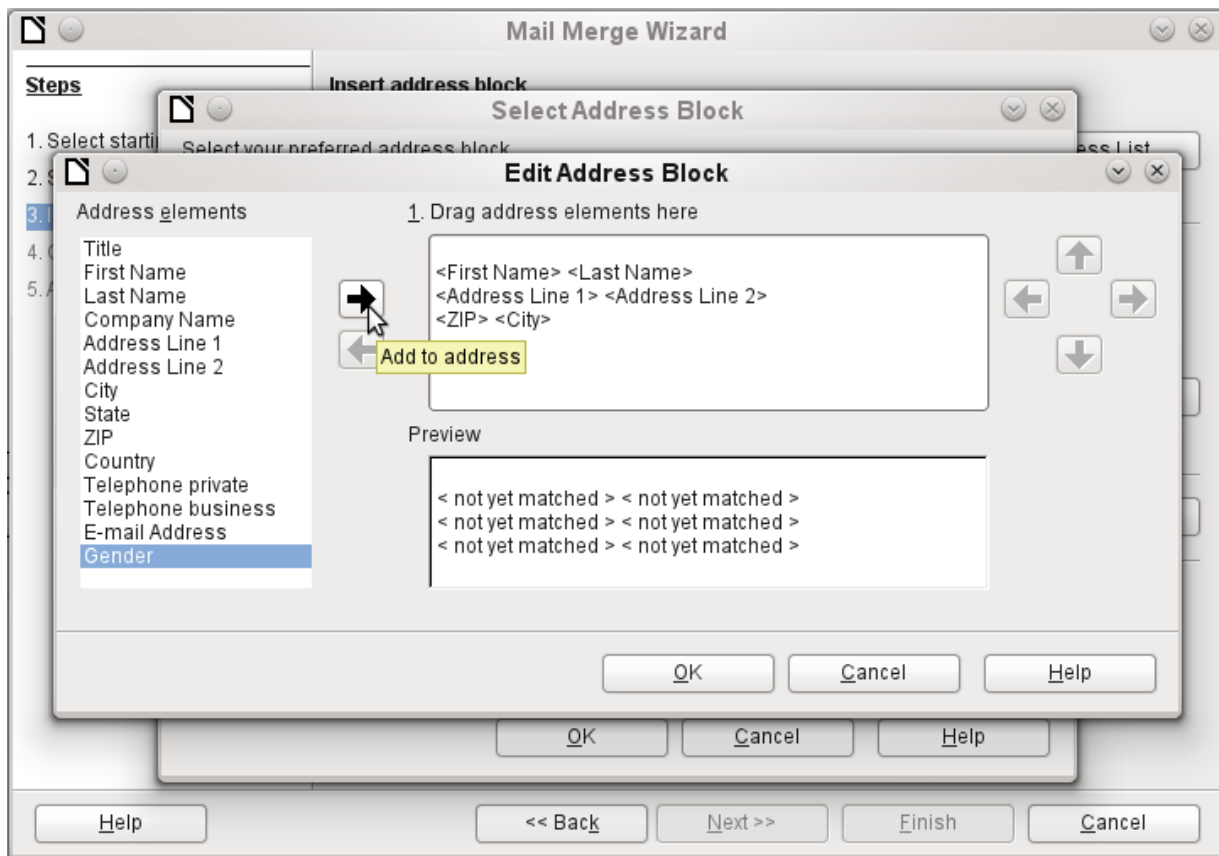


Figure 23: Edit address block

- 4) Click **OK** to close the Edit Address Block dialog, then click **OK** on the Select Address Block dialog to save your changes and return to the Mail Merge Wizard.

### Matching the fields

Finally, it is time to match the wizard's fields with the spreadsheet fields, so that items like <Surname> and "Last Name" match correctly.

- 1) Look at section 3 of the wizard (shown in Figure 20 on page 16). The box at the bottom displays one record at a time, using the address block format you specified. Use the right and left arrow buttons below that address box to step through the addresses, checking that they display correctly. Do not assume that all the records display correctly, just because one or two do.
- 2) If the addresses do not display correctly, click **Match Fields**. The Match Fields dialog (Figure 24) has three columns:
  - Address elements are the terms the wizard uses for each field, such as <First Name> and <Last Name>.
  - Use the *Matches to field* column to select, for each address element, the field from your data source that matches it.
  - The *Preview* column shows what will be shown for this field from the selected address block, so you can double-check that the match is correct.
- 3) When you have matched all the fields, click **OK** to return to the Insert Address Block dialog. Now, when you use the arrow buttons to look at all the addresses, they should all look correct. If not, go back and change anything you're not happy with, before clicking **Next** to move to the next step.

Note that you will not be able to continue until you have correctly matched all the fields in your chosen address block. If you see <not yet matched> in a field position it indicates

that the field in question is not correctly matched.

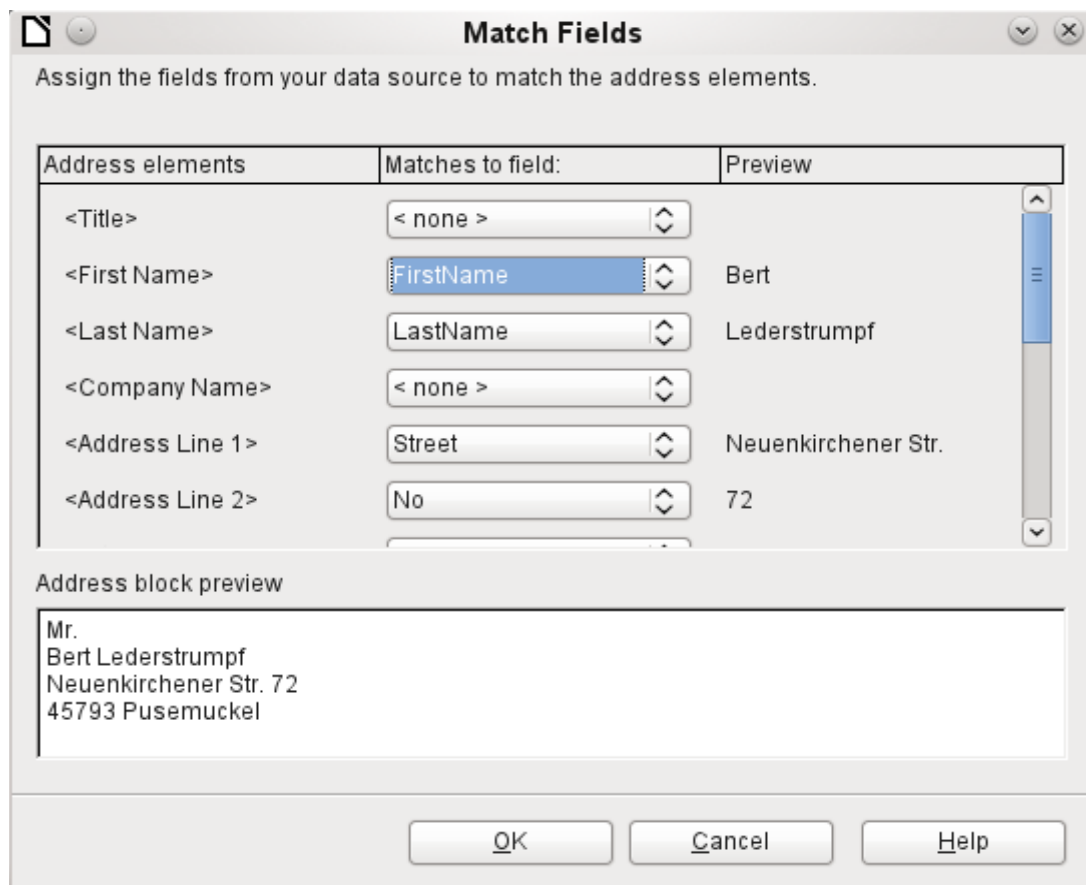


Figure 24: Match fields dialog

- 4) Notice the option for **Suppress lines with empty fields** in section 2 of Figure 20. Using the Wizard, you do not have to create your own conditional suppression fields, as you do when using the manual form letter method described earlier in this chapter.

## Step 4: Create salutation

It is possible to create just about any salutation you want in this step (see Figure 25).

Select **This document should contain a salutation** to enable the *General salutation* list box. Some general texts are available in the list box, or you can enter your own text. A preview pane displays your choice.

Select **Insert personalized salutation** to enable further salutation constructs.

You can, for example, use a different greeting for men and women. To do this, Writer must have some way of knowing whether a person is male or female. In a spreadsheet, you might have a column called Gender. In the section *Address list field indicating a female recipient*, set the **Field name** to Gender and the **Field value** to F. The Male salutation is then printed for all men and the Female salutation for all women. Unfortunately, LibreOffice does not provide for other genders; however, you can use a non-gendered salutation.

If you do not have such a column in your spreadsheet, or if you do not need to distinguish between genders in the salutation, then you can leave the **Field name** and **Field value** boxes empty and use the customized content of the *Male* list box for the salutation to all recipients.

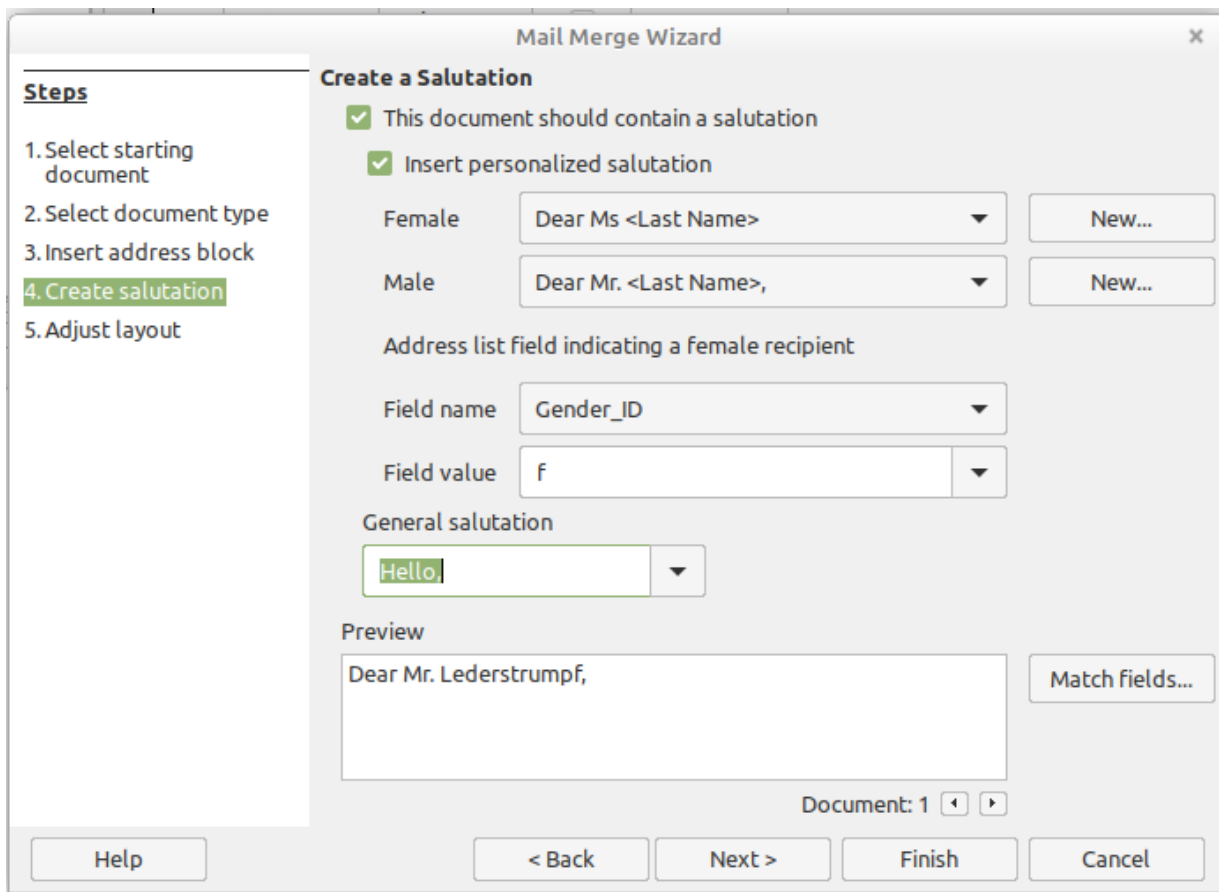


Figure 25: Create a salutation

As an example:

- 1) Click the **New** button alongside the *Male* list box. The Custom Salutation (Male Recipients) dialog opens (see Figure 26).
- 2) Select **Salutation** in the *Salutation elements* list on the right and drag it into box 1 on the right.
- 3) In the *Customize salutation* box, select an appropriate greeting or type your own text into the box. Edit it as needed.
- 4) Select and move **First Name** from the *Salutation elements* list into box 1, using either the Add to salutation arrow button or by dragging it. Then click the **Move right** arrow button on the right-hand side to add space between the salutation and the first name.
- 5) Select and move **Last Name** from the *Salutation elements* list into box 1, then click the **Move right** arrow button to add space between the first and the last names.
- 6) Finally, move Punctuation Mark across and select the comma from the choices in the *Customize salutation* box.
- 7) The construct is shown in the **Preview** box.
- 8) Carry out any final editing. Click **OK**.

This method allows you to use gender neutral titles such as Doctor (Dr) and Reverend (Rev), or titles such as Ms, or omit titles.

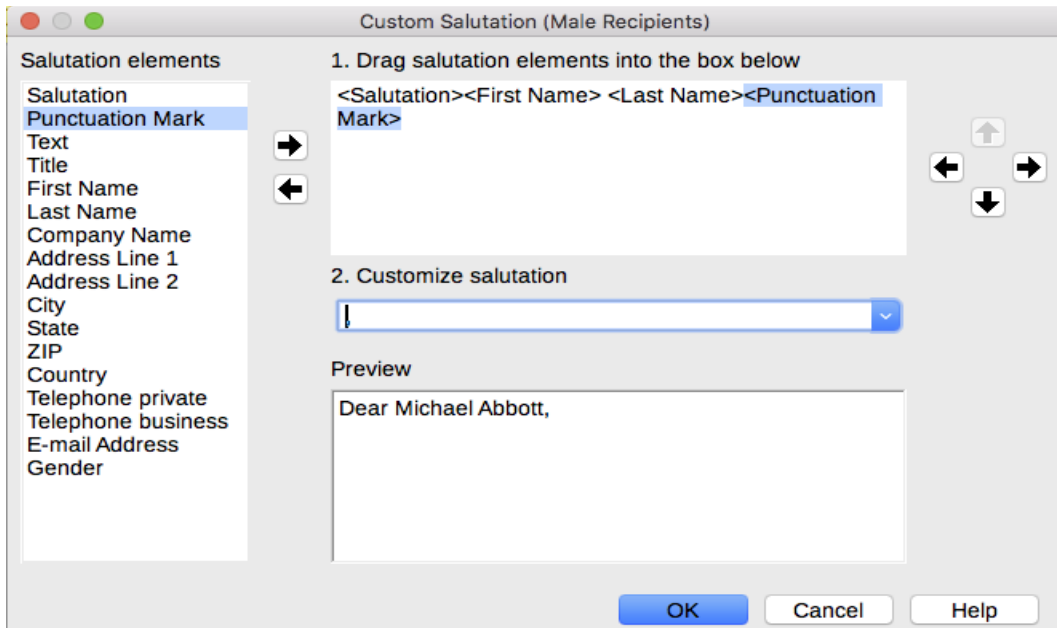


Figure 26: Customizing the salutation

### Step 5: Adjust layout

In Step 5: Adjust layout, you can adjust the position of the address block and salutation on the page. You can place the address block anywhere on the page. The salutation is always on the left, but you can move it up and down the page. Use the buttons shown in Figure 27 to move the elements.

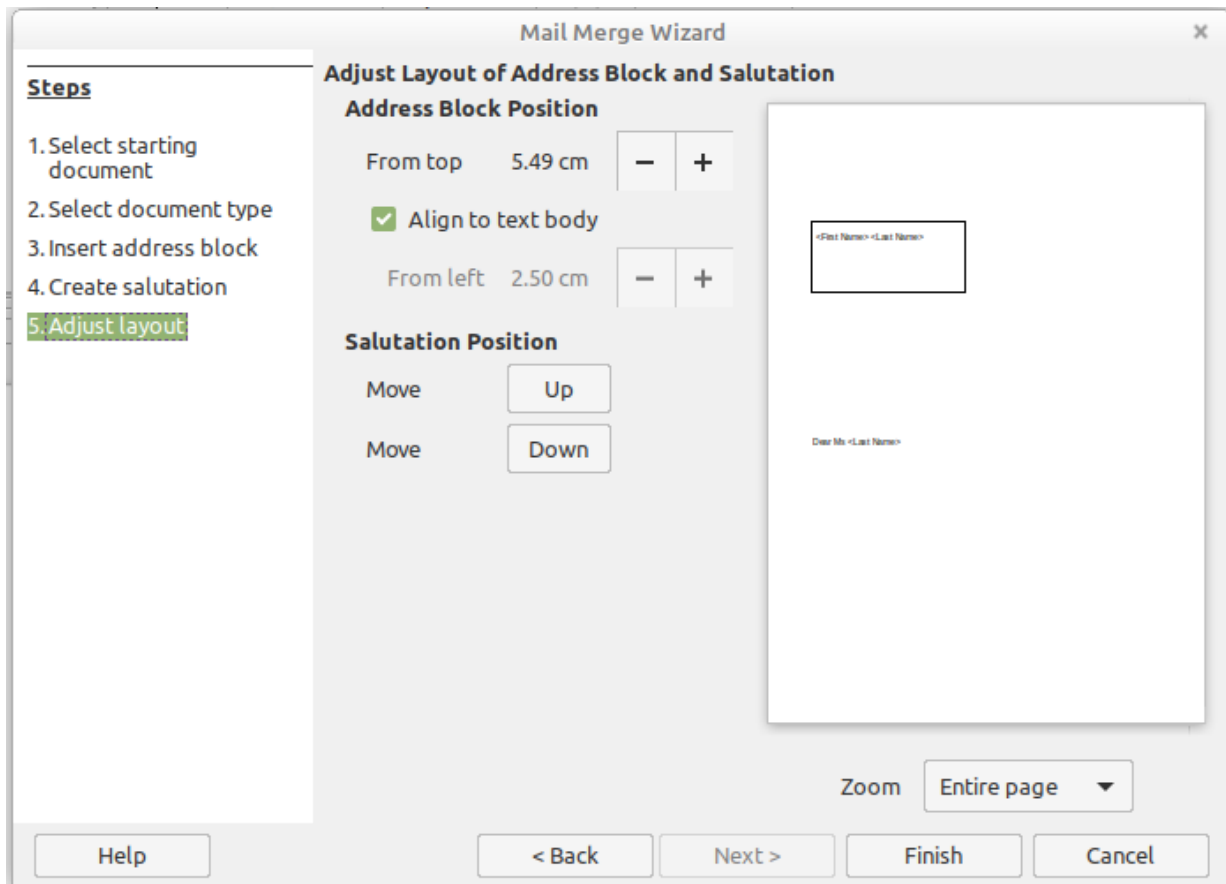


Figure 27: Adjust layout

You now have a Writer document into which you can type the contents of the letter. To merge the fields and print the letters, choose **File > Print** on the Menu bar. A message pops up, asking if you want to print a form letter. Click **Yes**.

The Mail Merge dialog (Figure 10) is now displayed, where you can optionally select records to include or exclude (in the top section) and, in the *Output* section, choose to print the letters immediately (**Printer**) or save them (**File**) for further editing or printing at a later time.

If you choose **File**, you can then choose whether to save the output as a single document (containing all of the letters) or save the letters as individual documents, and you can specify the name, location, and format of the files. Click **OK** to save the letters. You can now open the letters and edit them individually as you would edit any other document.