



LibreOffice
The Document Foundation

Writer Guide

Chapter 5

Printing, Exporting, Faxing, and E-Mailing

Copyright

This document is Copyright © 2010–2014 by the LibreOffice Documentation Team. Contributors are listed below. You may distribute or modify it under the terms of either the GNU General Public License (<http://www.gnu.org/licenses/gpl.html>), version 3 or later, or the Creative Commons Attribution License (<http://creativecommons.org/licenses/by/4.0/>), version 4.0 or later.

All trademarks within this guide belong to their legitimate owners.

Contributors

John A Smith

Jean Hollis Weber

Ron Faile Jr.

Feedback

Please direct any comments or suggestions about this document to the Documentation Team's mailing list: documentation@global.libreoffice.org

Note: Everything you send to a mailing list, including your email address and any other personal information that is written in the message, is publicly archived and cannot be deleted.

Acknowledgments

This chapter is adapted and updated from Chapter 5 of the *Writer Guide* for OpenOffice.org. The contributors to that chapter are:

Jean Hollis Weber
Peter Kupfer

Michele Zarri
Robert Scott

Agnes Belzunce
Janet M. Swisher

Publication date and software version

Published 17 March 2014. Based on LibreOffice 4.2.

Note for Mac users


Some keystrokes and menu items are different on a Mac from those used in Windows and Linux. The table below gives some common substitutions for the instructions in this chapter. For a more detailed list, see the application Help.

Windows or Linux	Mac equivalent	Effect
Tools > Options menu selection	LibreOffice > Preferences	Access setup options
<i>Right-click</i>	<i>Control+click</i> and/or <i>right-click</i> depending on computer setup	Opens a context menu
<i>Ctrl (Control)</i>	⌘ (<i>Command</i>)	Used with other keys
<i>F5</i>	<i>Shift+⌘+F5</i>	Opens the Navigator
<i>F11</i>	⌘+T	Opens the Styles and Formatting window

Contents

Copyright	2
Contributors.....	2
Feedback.....	2
Acknowledgments.....	2
Publication date and software version.....	2
Note for Mac users	2
Quick printing	4
Controlling printing	4
Selecting general printing options for a document.....	5
Printing multiple pages on a single sheet of paper.....	5
Selecting what to print.....	7
Printing a brochure.....	7
Printing in black and white (on a color printer).....	9
Previewing pages before printing.....	9
Printing envelopes	10
Printing labels	12
Sending a fax	14
Exporting to PDF	14
Quick export to PDF.....	14
Controlling PDF content and quality.....	14
General page of PDF Options dialog.....	15
Initial View page of PDF Options dialog.....	16
User Interface page of PDF Options dialog.....	17
Links page of PDF Options dialog.....	18
Security page of PDF Options dialog.....	18
Exporting to XHTML.....	20
E-mailing Writer documents	20
E-mailing a document to several recipients.....	20
Digital signing of documents	23
Removing personal data	24

Quick printing

Click the **Print File Directly** icon  to send the entire document to the default printer defined for your computer.

Note

You can change the action of the **Print File Directly** icon to send the document to the printer defined for the document instead of the default printer for the computer. Go to **Tools > Options > Load/Save > General** and select the **Load printer settings with the document** option.

Controlling printing

For more control over printing, use the Print dialog (**File > Print** or **Ctrl+P**).

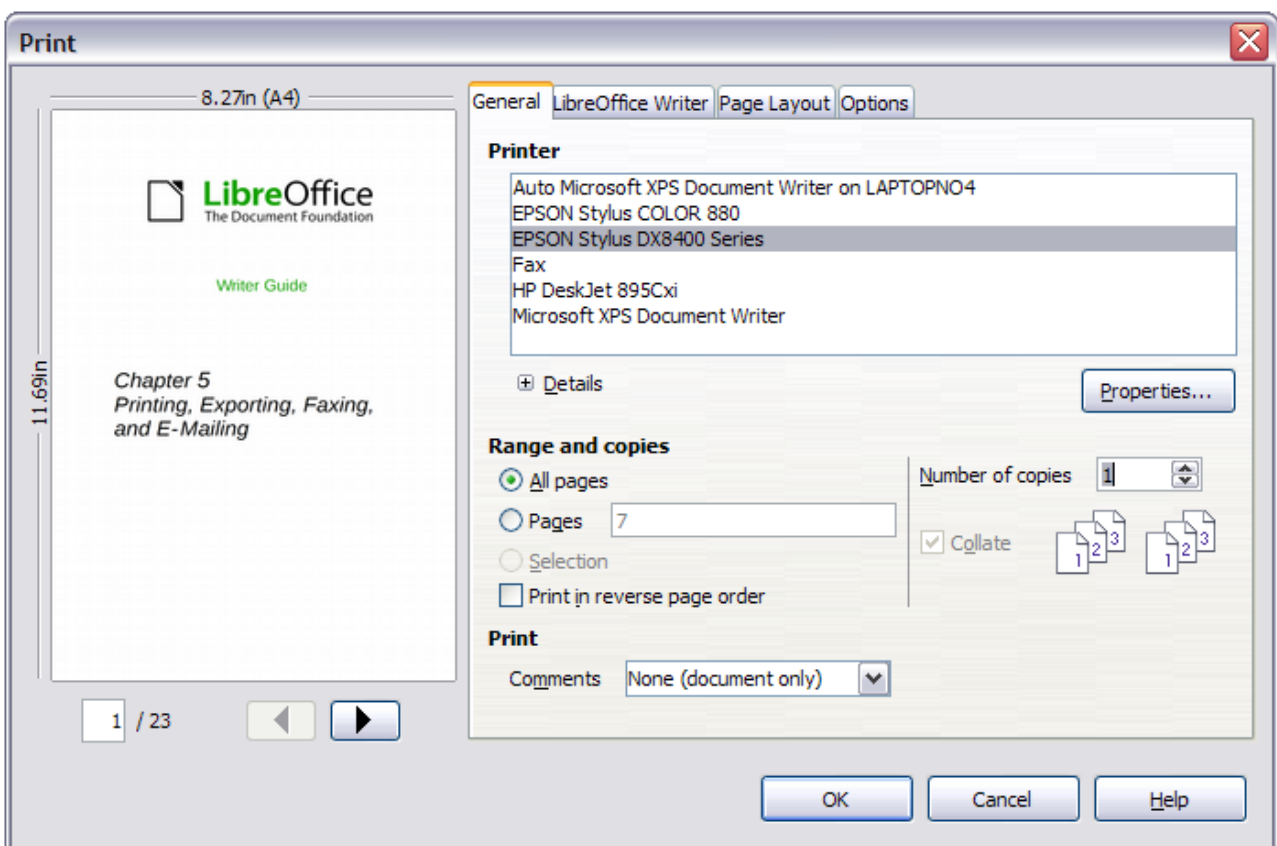


Figure 1: The Print dialog

Note

The options selected on the Print dialog apply to this printing of this document only.

To specify default printing settings for LibreOffice, go to **Tools > Options > LibreOffice > Print** and **Tools > Options > LibreOffice Writer > Print**. See Chapter 2, Setting Up Writer, for more details.

The Print dialog has four tabs, from which you can choose a range of options, as described in the following sections.

Selecting general printing options for a document

On the *General* tab of the Print dialog, you can choose:

- The **printer** (from the printers available)
- Which **pages** to print (the current page number is displayed here), the number of copies to print, and whether to collate multiple copies (*Range and copies* section)
- Whether to print any **comments** that are in the document, and where to print the comments.

Some selections may not be available all the time. For example, if the document contains no comments, the Print – Comments drop-down list does not work.

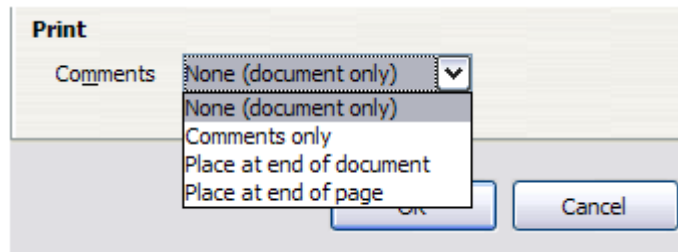


Figure 2: Choosing whether and where to print comments

Click the **Properties** button to display a dialog where you can choose portrait or landscape orientation, which paper tray to use, and the paper size to print on.

On the *Options* tab of the Print dialog, you can choose various other options for printing.

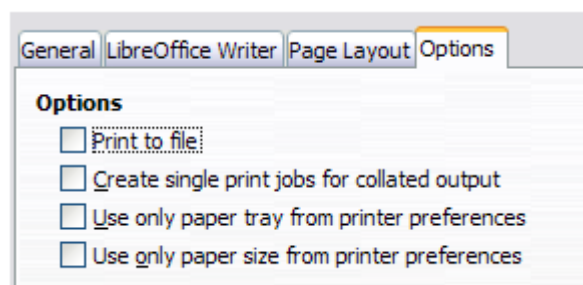


Figure 3: General print options

Printing multiple pages on a single sheet of paper

You can print multiple pages of a document on one sheet of paper. To do this:

- 1) In the Print dialog, select the *Page Layout* tab (Figure 4).

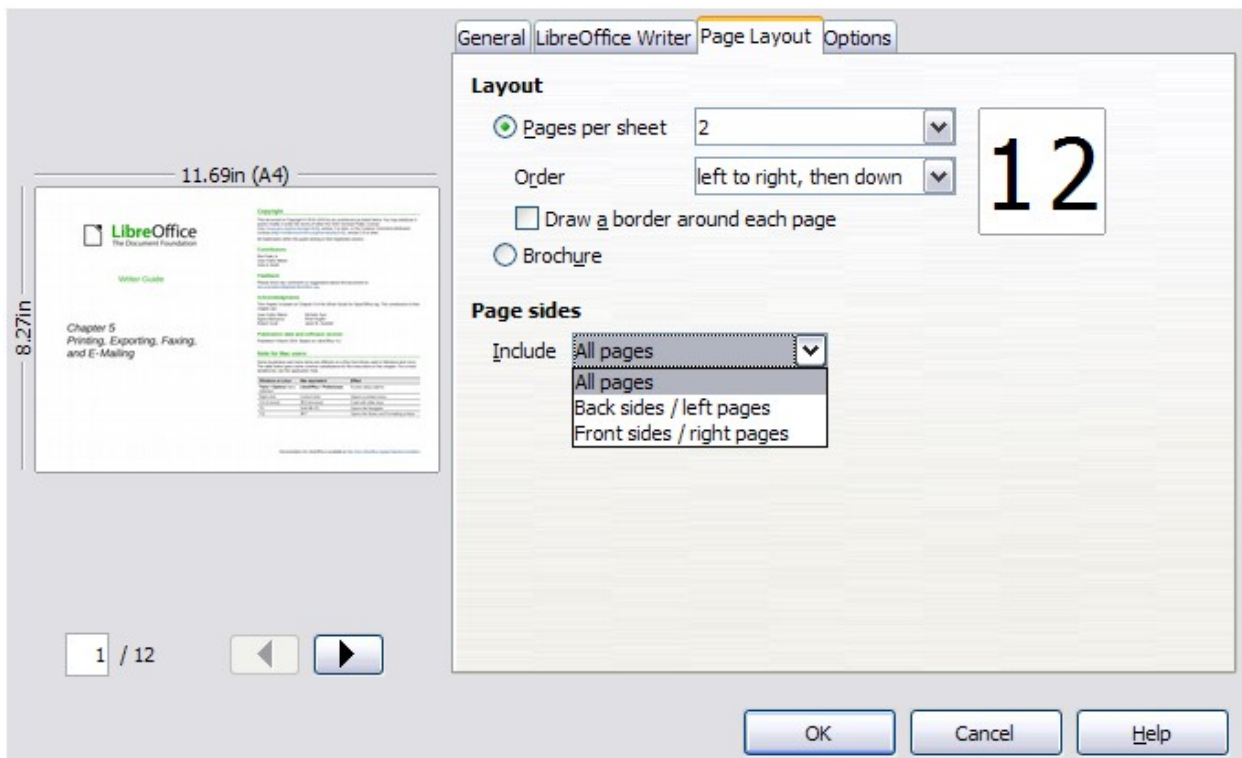
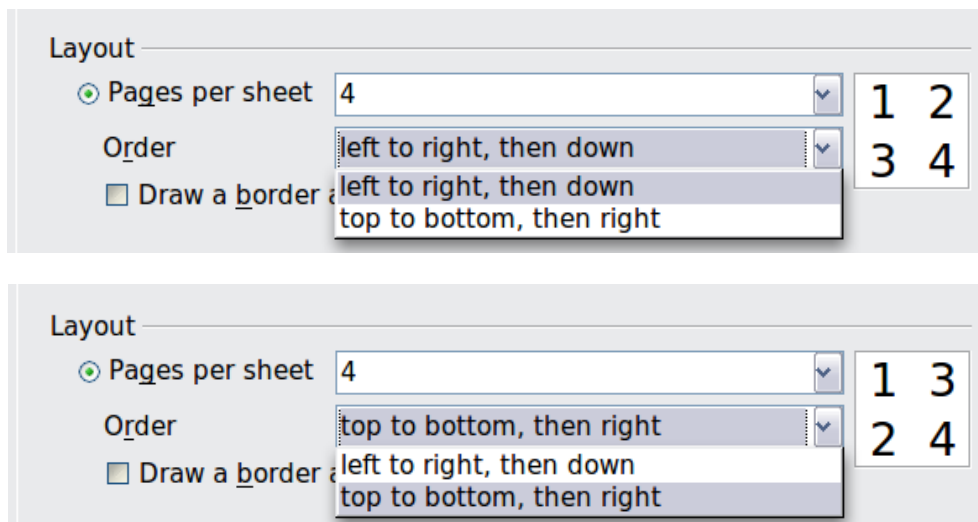


Figure 4: Printing multiple page per sheet of paper

- 2) In the *Layout* section, select from the drop-down list the number of pages to print per sheet. The preview panel on the left of the Print dialog shows how the printed document will look. When printing more than 2 pages per sheet, you can choose the order in which they are printed across and down the paper. The two pictures below show the difference.



- 3) In the *Page sides* section, select whether to print all pages or only some pages.
- 4) Click the **OK** button.

Tip

To print two pages per sheet in “facing pages” (book layout) style, print from Print Preview instead. See page 9.

Selecting what to print

In addition to printing a full document, you can choose to print individual pages, ranges of pages, or a selection of a document, as described in this section.

Printing an individual page:

- 1) Choose **File > Print** from the Menu bar.
- 2) On the Print dialog, select the page to print.
- 3) In the *Range and copies* section of the General page, select the *Pages* option.
- 4) Enter the *sequence number* of the page you want to print. This may differ from the page number if you have restarted page numbering within the document. The preview box changes to show the selected page.
- 5) Click the **OK** button.

Printing a range of pages:

- 1) Choose **File > Print** from the Menu bar.
- 2) On the Print dialog, select the range of pages to print.
- 3) In the *Ranges and copies* section of the General page, select the *Pages* option.
- 4) Enter the sequence numbers of the pages to print (for example, 1–4 or 1,3,7,11).
- 5) Click the **OK** button.

Printing a selection of text:

- 1) In the document, select the material (text and graphics) to print.
- 2) Choose **File > Print** from the menu bar.
- 3) The *Ranges and copies* section of the Print dialog now includes a *Selection* option and the preview box shows the selected material. See Figure 5.
- 4) Click the **OK** button.

Printing a brochure

In Writer, Impress, and Draw, you can print a document with two pages on each side of a sheet of paper, arranged so that when the printed pages are folded in half, the pages are in the correct order to form a booklet or brochure.

Tip

Plan your document so it will look good when printed half size; choose appropriate margins, font sizes, and so on. You may need to experiment.

To print a brochure on a single-sided printer:

- 1) Choose **File > Print**.
- 2) On the *General* page of the Print dialog, click **Properties**.
- 3) Check the printer is set to the same orientation (portrait or landscape) as specified in the page setup for your document. Usually the orientation does not matter, but it does for brochures. Click **OK** to return to the Print dialog.
- 4) Select the *Page layout* tab in the Print dialog.
- 5) Select the **Brochure** option.
- 6) In the *Page sides* section, select *Back sides / left pages* option from the Include drop-down list. (See Figure 6.)
- 7) Click the **OK** button.

Selecting what to print

In addition to printing a full document, you can choose to print individual pages, ranges of pages, or a selection of a document, as described in this section.

Printing an individual page:

- 1) Choose **File > Print** from the Menu bar.
- 2) On the Print dialog box, select the page to print.
- 3) In the *Range and copies* section, select the page to print.
- 4) Enter the sequence number if you have changes to show.
- 5) Click the **OK** button.

Printing a range of pages:

- 1) Choose **File > Print** from the Menu bar.
- 2) On the Print dialog box, select the page to print.
- 3) In the *Ranges and copies* section, select the page to print.
- 4) Enter the sequence number if you have changes to show.
- 5) Click the **OK** button.

Printing a selection of text:

- 1) In the document, select the text to print.
- 2) Choose **File > Print** from the Menu bar.
- 3) In the *Ranges and copies* section, select the page to print.
- 4) Click the **OK** button.

Printing a brochure

In Writer, Impress, and Draw, you can print a document as a booklet or a brochure. In Writer, Impress, and Draw, you can print a document as a booklet or a brochure.

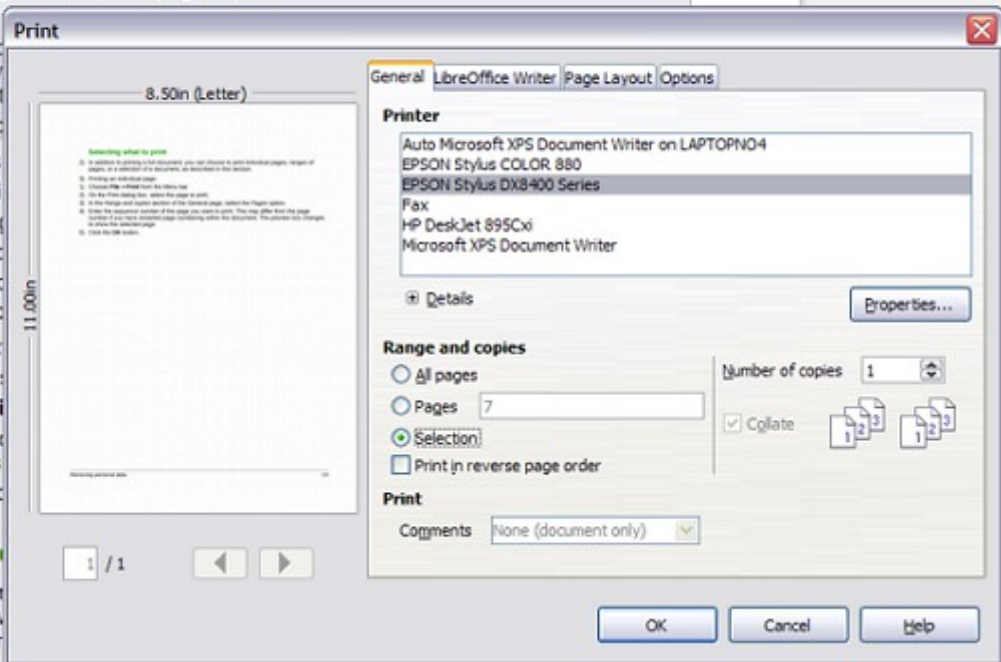


Figure 5: Printing a selection of text

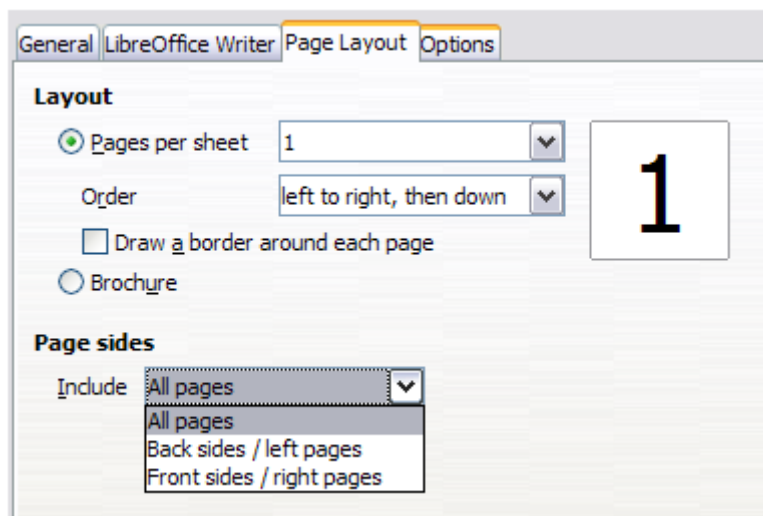


Figure 6: Selecting which pages to print

- 8) Take the printed pages out of the printer, turn the pages over, and put them back into the printer in the correct orientation to print on the blank side. You may need to experiment a bit to find out what the correct arrangement is for your printer.
- 9) On the Print dialog, in the *Page sides* section, select *Front sides / right pages* option from the Include drop-down box.
- 10) Click the **OK** button.

Tip

If your printer can print double-sided automatically, choose **All pages**.

Printing in black and white (on a color printer)

You may wish to print documents in black and white on a color printer. Several choices are available. Please note that some color printers may print in color regardless of the settings you choose.

Change the printer settings to print in black and white or grayscale:

- 1) Choose **File > Print** to open the Print dialog.
- 2) Click **Properties** to open the Properties dialog for the printer. The available choices vary from one printer to another, but you should find options for the Color settings. See your printer's help or user manual for more information.
- 3) The choices for color might include *black and white* or *grayscale*. Choose the required setting.
- 4) Click **OK** to confirm your choice and return to the Print dialog,
- 5) Click the **OK** button to print the document.

Tip

Grayscale is best if you have any graphics in the document.

Change the LibreOffice settings to print all color text and graphics as grayscale:

- 1) Choose **Tools > Options > LibreOffice > Print**.
- 2) Select the **Convert colors to grayscale** option. Click **OK** to save the change.
- 3) Open the Print dialog (**File > Print**).
- 4) Click the **OK** button to print the document.

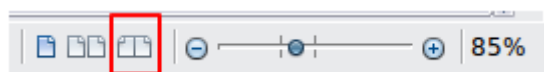
Change the LibreOffice Writer settings to print all color text as black, and all graphics as grayscale:

- 1) Choose **Tools > Options > LibreOffice [Component] > Print**.
- 2) Under *Contents*, select the **Print text in black** option. Click **OK** to save the change.
- 3) Open the Print dialog (**File > Print**).
- 4) Click the **OK** button to print the document.

Previewing pages before printing

The normal page view in Writer shows you what each page will look like when printed and you can edit the pages in that view. If you are designing a document to be printed double-sided, you may want to see what facing pages look like. Writer provides two ways to do this:

- View Layout (editable view): use the Facing Pages (Book Preview) button on the status bar.







- Page Preview (read-only view).

To use Page Preview:

- 1) Choose **File > Page Preview** (or click the **Page Preview** button  on the Standard toolbar). Writer now displays the **Page Preview** toolbar instead of the Formatting toolbar.



Figure 7: Page Preview toolbar

- 2) Select the required preview button: **Two Pages** , **Multiple Pages**  or **Book Preview** .
- 3) To print the document from this view, click the **Print document** button  to open the Print dialog.
- 4) Choose the print options and click the **OK** button.

Printing envelopes

Printing envelopes involves two steps: setup and printing.

To set up an envelope to be printed by itself or with your document:

- 1) Click **Insert > Envelope** from the Menu bar.
- 2) In the Envelope dialog, start with the *Envelope* tab. Verify, add, or edit the information in the Addressee and Sender (the “from” on the envelope) boxes.

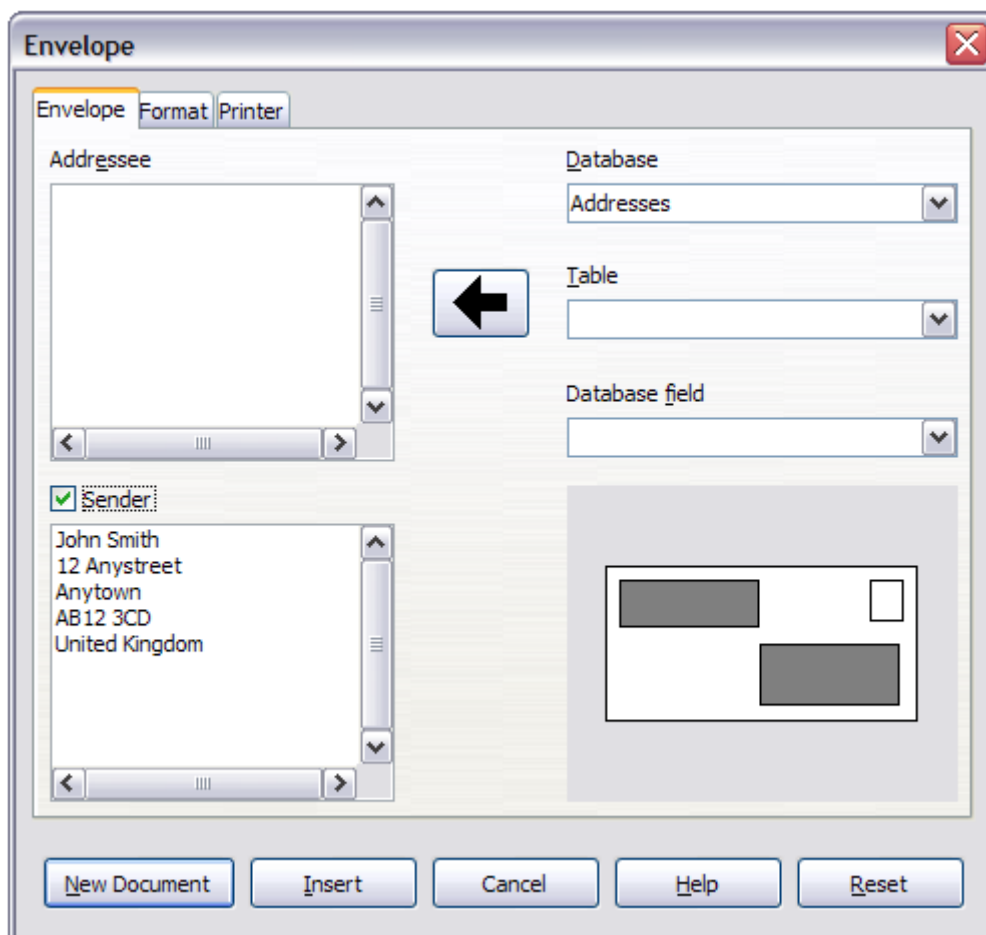


Figure 8: Choosing addressee and sender information for an envelope

You can type information directly into the Addressee and Sender boxes, or use the right-hand drop-down lists to select the database or table from which you can draw the envelope information, if desired. See Chapter 11, Using Mail Merge, for details on how to print envelopes from a database.

- 3) On the *Format* page, verify or edit the positioning of the addressee and the sender information. The preview area on the lower right shows the effect of your positioning choices.

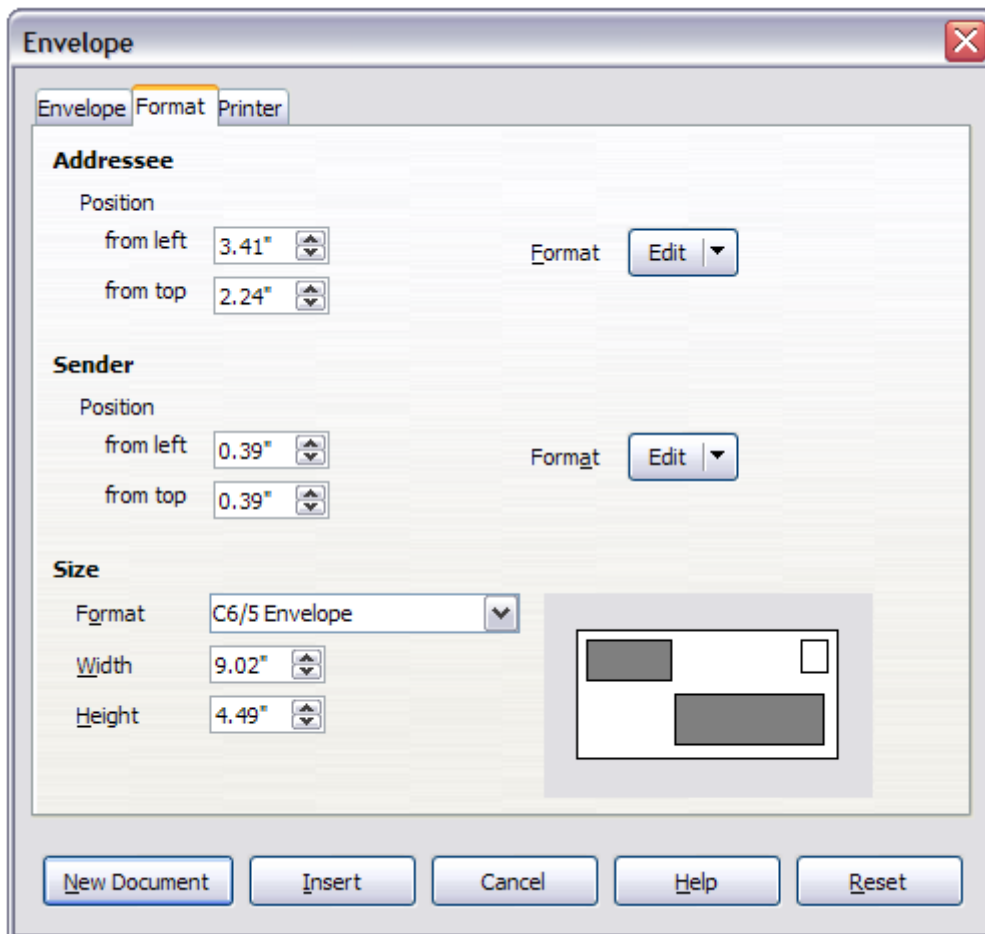


Figure 9: Choosing positioning and size of elements for an envelope

- 4) To format the text of these blocks, click the **Edit** buttons to the right. In the drop-down list you have two choices for each button: Character and Paragraph.
 - Selecting Character opens a Character dialog, similar to the standard Character dialog, but omitting Borders, allowing you to set the formatting of the text's attributes.
 - Selecting Paragraph opens a Paragraph dialog, similar to the standard Paragraph dialog, but omitting Outline & Numbering, allowing you to set the paragraph's attributes.

- 5) In the lower left of this page, the Size section, choose the envelope format from the drop-down list. The width and height of the selected envelope then show in the boxes below the selected format. If you chose a pre-existing format, just verify these sizes. If you chose *User defined* in the Format list, then you can edit the sizes.

- 6) After formatting, go to the *Printer* page to choose printer options such as envelope orientation and shifting. You may need to experiment a bit to see what works best for your printer.

You can also choose a different printer or alter printer setup (for example, specify the tray that holds envelopes) for this print job by clicking the **Setup** button and making selections on the Printer Setup dialog.

- 7) When you have finished formatting and are ready to print, click either the **New Document** or **Insert** button to finish. **New Document** makes only an envelope or starts a new document with the envelope. **Insert** puts the envelope into your existing document as page 1.

To not proceed with this envelope, click **Cancel** or press the *Esc* key. You can also click **Reset** to remove your changes and return to the original settings when the dialog opened.

When the Envelope dialog closes, you are returned to your document, which now has the envelope in the same file as the document. Save this file before you do anything else.

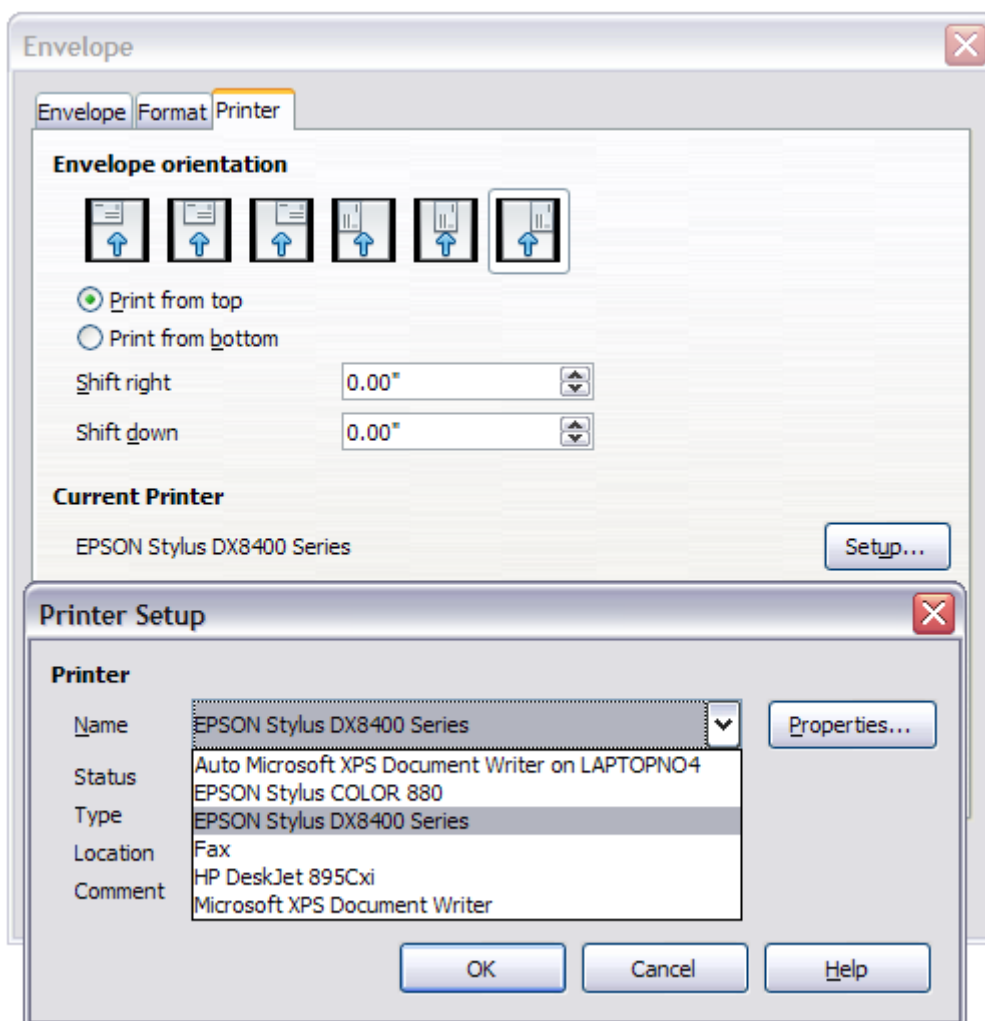


Figure 10: Choosing printer options for an envelope

To print the envelope:

- 1) Choose **File > Print** from the menu bar.
- 2) On the Print dialog, under **Print range**, choose **Pages** and type **1** in the box. Click **OK** to print.

Printing labels

Labels are commonly used for printing address lists (where each label shows a different address), but they can also be used for making multiple copies of one label only, for example return-address stickers. To print labels:

- 1) Choose **File > New > Labels** on the Menu bar. The Labels dialog opens.
- 2) On the *Labels* page, fill in your own label text in the Inscription box, or use the **Database** and **Table** drop-down lists to choose the required information, as described in Chapter 11, Using Mail Merge.

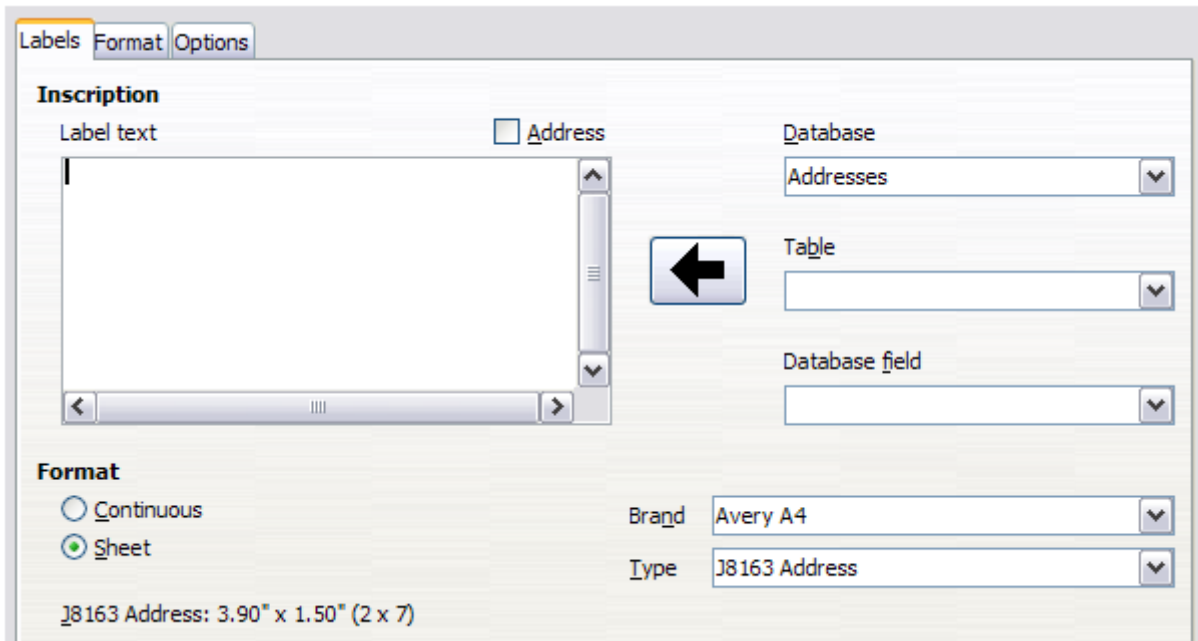


Figure 11: Labels dialog, Labels page

- 3) Select the label stock in the **Brand** drop-down list. The types for that brand then appear in the **Type** drop-down list. Select the size and type of labels required. You can also select **User** in the **Type** drop-down list and then make specific selections on the *Format* page.
- 4) On the *Format* page, choose the pitch, sizes, margins, columns and rows for user-defined labels, or just verify with a brand of label stock you have loaded into the printer.

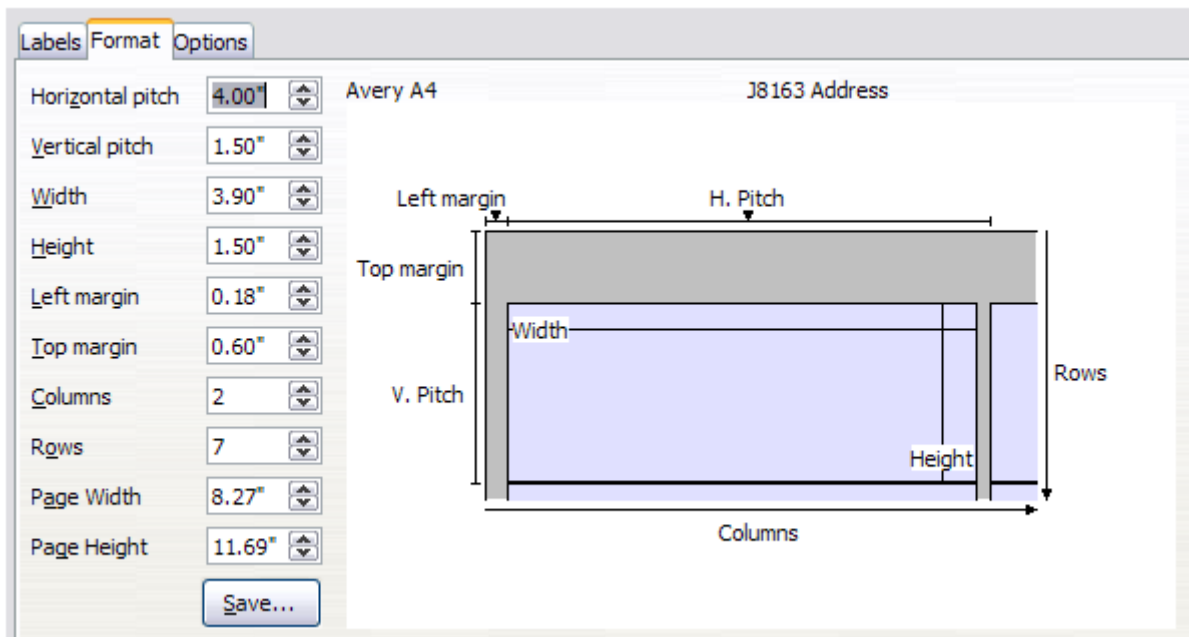


Figure 12: Labels dialog, Format page

- 5) Click **Save** to save your new format.
- 6) On the *Options* page, choose to print the entire page of labels or one single label, then select which one by the column and row. You can also change printer setup.

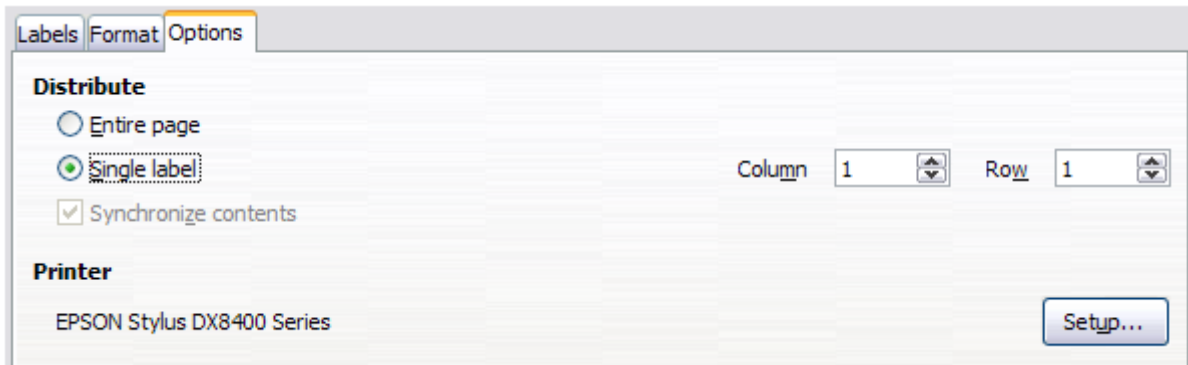


Figure 13: Labels dialog, Options page

- 7) When you have finished formatting, click **New Document** to create your sheet of labels or click **Cancel** (or press the *Esc* key). You can also click **Reset** to remove your changes and return to the original settings when the dialog is opened.
- 8) You can print using the **Print File Directly** icon on the toolbar or by choosing **File > Print** from the Menu bar, or you can save the file to print later.

Sending a fax

To send a fax directly from LibreOffice, you need a fax modem and a fax driver that allows applications to communicate with the fax modem.


- 1) Open the Print dialog (Figure 1) by choosing **File > Print** and select the fax driver in the **Printer** list.
- 2) Click **OK** to open the dialog for your fax driver, where you can select the fax recipient.

You can set up a toolbar button so that a single click sends the current document as a fax. To add a button for this purpose to a toolbar, see Chapter 16, Customizing Writer.

Exporting to PDF

LibreOffice can export documents to PDF (Portable Document Format). This industry-standard file format for file viewing is ideal for sending the file to someone else to view using Acrobat Reader or other PDF viewer.

Quick export to PDF

Click the **Export Directly as PDF** button  to export the entire document using the PDF settings you most recently selected in the PDF Options dialog. You are asked to enter the file name and location for the PDF file, but you do not get a chance to choose a page range, the image compression, or other options.

Controlling PDF content and quality

For more control over the content and quality of the resulting PDF, use **File > Export as PDF**. The PDF Options dialog opens. This dialog has five pages (General, Initial View, User Interface, Links, and Security). Select the appropriate settings, and then click **Export**. On the Export dialog, enter the location and file name of the PDF to be created, then click **Export** to export the file.

General page of PDF Options dialog

On the *General* page (Figure 14), you can choose which pages to include in the PDF, the type of compression to use for images (which affects the quality of images in the PDF), and other options.

Range section

- **All:** Exports the entire document.
- **Pages:** To export a range of pages, use the format **3-6** (pages 3 to 6). To export single pages, use the format **7;9;11** (pages 7, 9, and 11). You can also export a combination of page ranges and single pages, by using a format like **3-6;8;12**.
- **Selection:** Exports whatever material is selected.

Images section

- **Lossless compression:** Images are stored without any loss of quality. Tends to make large files when used with photographs. Recommended for other kinds of images or graphics.
- **JPEG compression:** Allows for varying degrees of quality. A setting of 90% works well with photographs (small file size, little perceptible loss of quality).
- **Reduce image resolution:** Lower-DPI (dots per inch) images have lower quality. For viewing on a computer screen generally a resolution of 72dpi (for Windows) or 96dpi (GNU/Linux) is sufficient, while for printing it is generally preferable to use at least 300 or 600 dpi, depending on the capability of the printer. Higher dpi settings greatly increase the size of the exported file.

Note

EPS (Encapsulated PostScript) images with embedded previews are exported only as previews. EPS images without embedded previews are exported as empty placeholders.

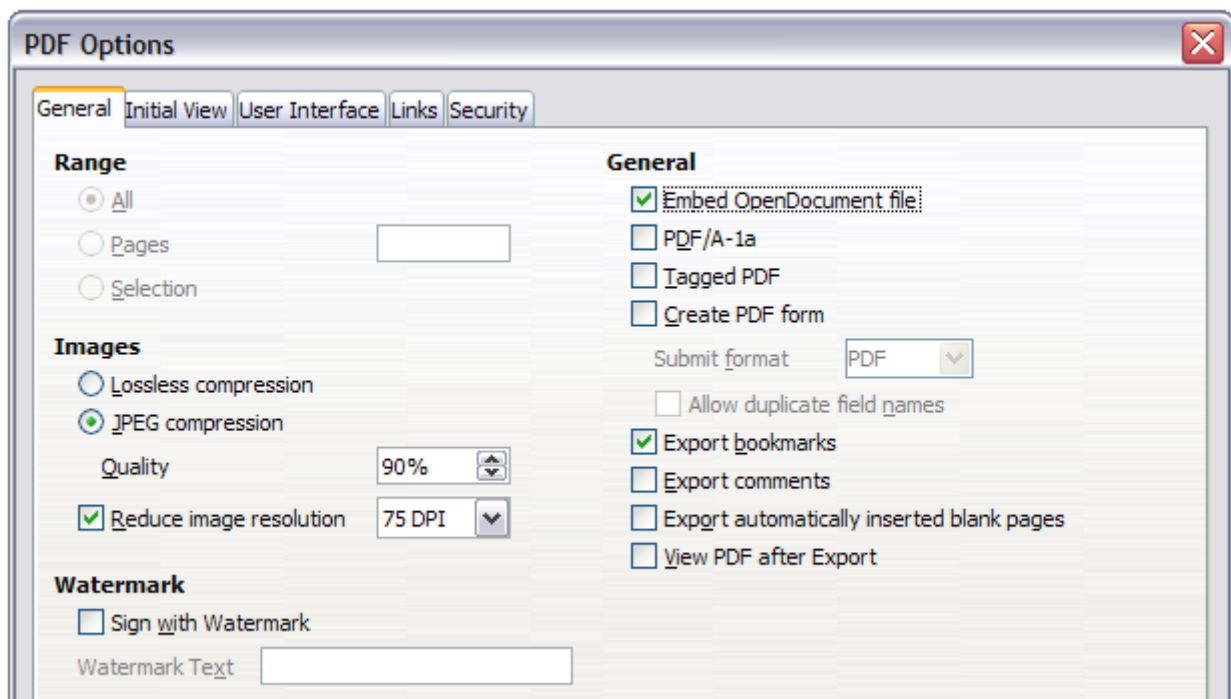


Figure 14: General page of PDF Options dialog

Watermark section

- **Sign with Watermark:** When this option is selected, a transparent overlay of the text you enter into the **Watermark Text** box will appear on each page of the PDF.

General section

- **Embed OpenDocument file:** Use this setting to export the document as a PDF file containing two file formats: PDF and ODF. In PDF viewers it behaves like a normal PDF file, and it remains fully editable in LibreOffice.
- **PDF/A-1a:** PDF/A-1a is an ISO standard for long-term preservation of documents, by embedding all the information necessary for faithful reproduction (such as fonts) while forbidding other elements (including forms, security, and encryption). PDF tags are written. If you select PDF/A-1a, the forbidden elements are grayed-out (not available).
- **Tagged PDF:** Tagged PDF contains information about the structure of the document's contents. This can help to display the document on devices with different screens, and when using screen reader software. Some tags that are exported are table of contents, hyperlinks, and controls. This option can increase file sizes significantly.
- **Create PDF form – Submit format:** Choose the format of submitting forms from within the PDF file. This setting overrides the control's URL property that you set in the document. There is only one common setting valid for the whole PDF document: PDF (sends the whole document), FDF (sends the control contents), HTML, and XML. Most often you will choose the PDF format.
- **Export bookmarks:** Creates PDF bookmarks (a table of contents list displayed by most PDF viewers, including Adobe Reader) for all headings in the document.
- **Export comments:** Exports comments as PDF notes. You may not want this!
- **Export automatically inserted blank pages:** If selected, automatically inserted blank pages are exported to the PDF. This is best if you are printing the PDF double-sided. For example, books usually have chapters set to always start on an odd-numbered (right-hand) page. When the previous chapter ends on an odd page, LibreOffice inserts a blank page between the two odd pages. This option controls whether to export that blank page.

Earlier versions of LibreOffice had the option:

- **Embed standard fonts:** Normally the 14 standard PostScript fonts were not embedded in a PDF file, because PDF reader software already contained these fonts. However, you could choose to embed these fonts in all PDF documents created by LibreOffice to enhance display accuracy in PDF viewers.

The PostScript fonts are now embedded by default.

Initial View page of PDF Options dialog

On the *Initial View* page, you can choose how the PDF opens by default in a PDF viewer. The selections should be self-explanatory.

If you have Complex Text Layout enabled (in **Tools > Options > Language settings > Languages**), an additional selection is available under *Continuous facing: First page is left* (normally, the first page is on the right when using the *Continuous facing* option).

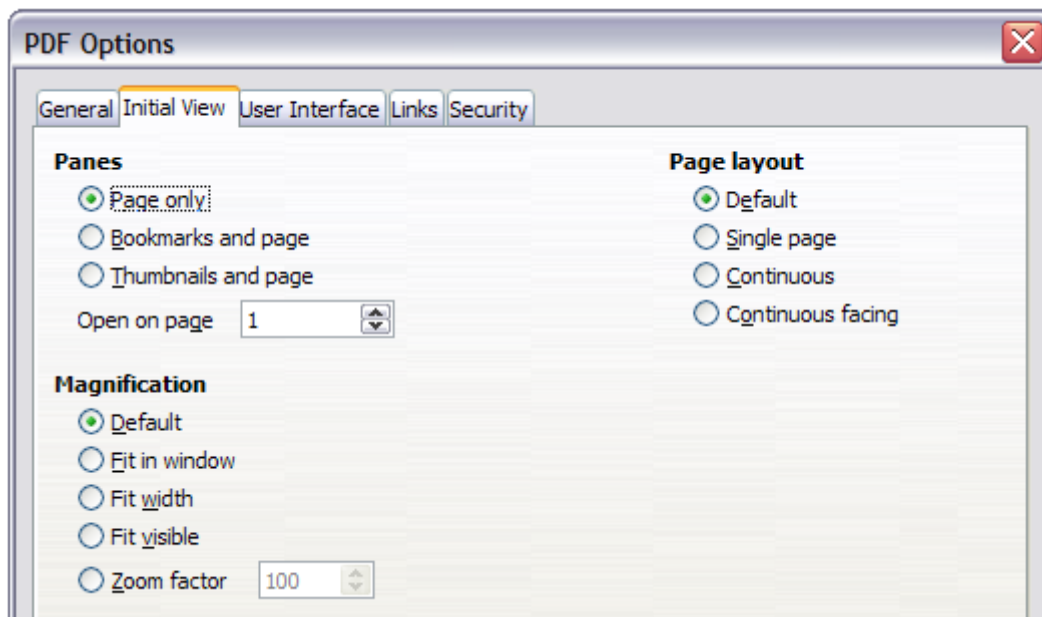


Figure 15: Initial View page of PDF Options dialog

User Interface page of PDF Options dialog

On the *User Interface* page, you can choose more settings to control how a PDF viewer displays the file. Some of these choices are particularly useful when you are creating a PDF to be used as a presentation or a kiosk-type display.

Window options section

- **Resize window to initial page.** Causes the PDF viewer window to resize to fit the first page of the PDF.
- **Center window on screen.** Causes the PDF viewer window to be centered on the computer screen.
- **Open in full screen mode.** Causes the PDF viewer to open full-screen instead of in a smaller window.
- **Display document title.** Causes the PDF viewer to display the document's title in the title bar.

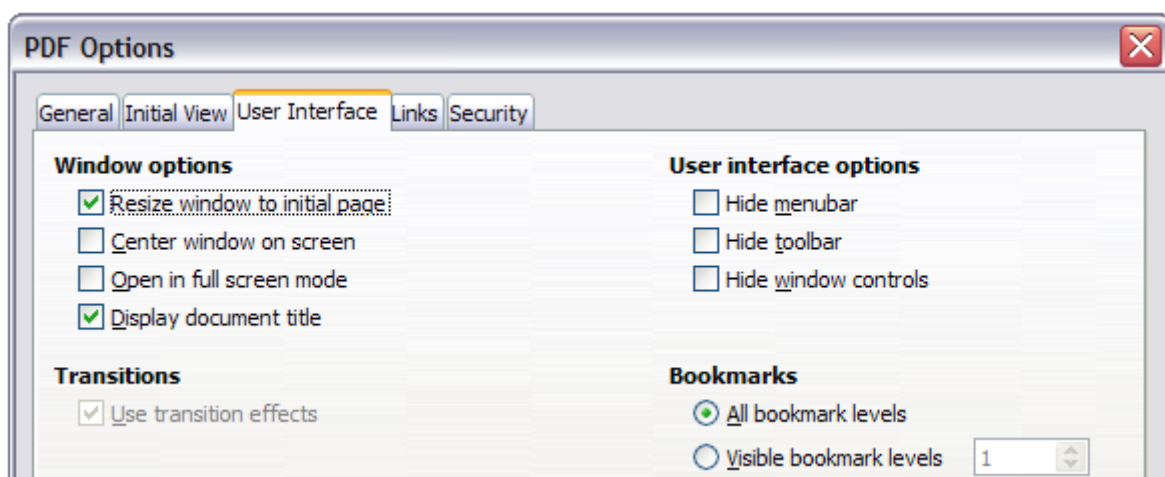


Figure 16: User Interface page of PDF Options dialog

User interface options section

- **Hide menu bar.** Causes the PDF viewer to hide the menu bar.
- **Hide toolbar.** Causes the PDF viewer to hide the toolbar.
- **Hide window controls.** Causes the PDF viewer to hide other window controls.

Bookmarks

Select how many heading levels are displayed as bookmarks, if *Export bookmarks* is selected on the General page.

Links page of PDF Options dialog

On the *Links* page, you can choose how links in documents are exported to PDF.

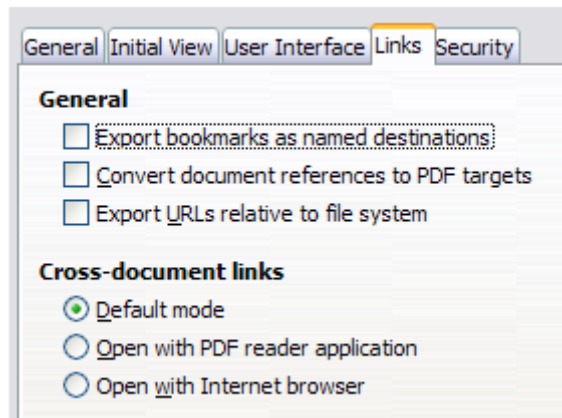


Figure 17: Links page of PDF Options dialog

Export bookmarks as named destinations

If you have defined Writer bookmarks, this option exports them as “named destinations” to which Web pages and PDF documents can link.

Convert document references to PDF targets

If you have defined links to other documents with OpenDocument extensions (such as .odt, .ods, and .odp), this option converts the files names to .pdf in the exported PDF document.

Export URLs relative to the file system

If you have defined relative links in a document, this option exports those links to the PDF.

Cross-document links

Set up the behavior of the PDF links to other files. Select one among the following alternatives:

- **Default mode:** The PDF links will be handled as specified in your operating system.
- **Open with PDF reader application:** Use the same application used to display the PDF document to open linked PDF documents.
- **Open with Internet browser:** Use the default Internet browser to display linked PDF documents.

Security page of PDF Options dialog

PDF export includes options to encrypt the PDF (so it cannot be opened without a password) and apply some digital rights management (DRM) features.

- With an *open password* set, the PDF can only be opened with the password. Once opened, there are no restrictions on what the user can do with the document (for example, print, copy, or change it).

- With a *permissions password set*, the PDF can be opened by anyone, but its permissions can be restricted. See Figure 18. After you set a password for permissions, the other choices on the Security page become available.
- With *both the open password and permission password set*, the PDF can only be opened with the correct password, and its permissions can be restricted.

Note

Permissions settings are effective only if the user's PDF viewer respects the settings.

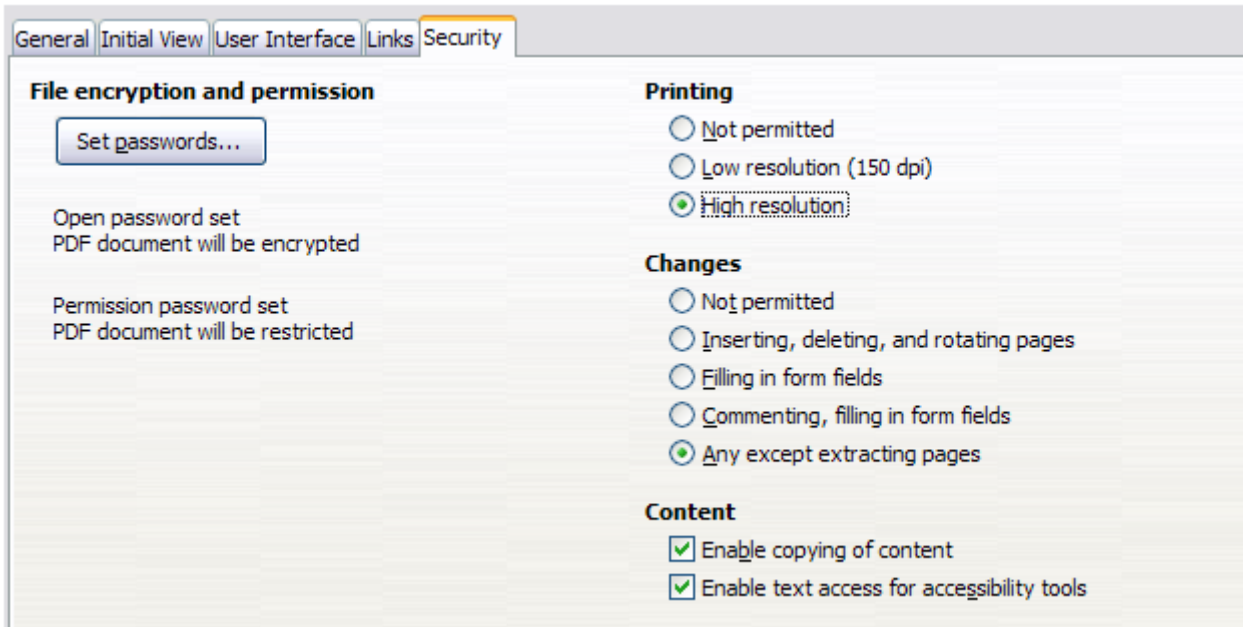


Figure 18: Security page of PDF Options dialog with passwords set

Figure 19 shows the pop-up dialog displayed when you click the **Set passwords** button on the Security page of the PDF Options dialog.

Once you have set all the options you require, click on **Export** to open the Export dialog, where you can set the file name and the save location.

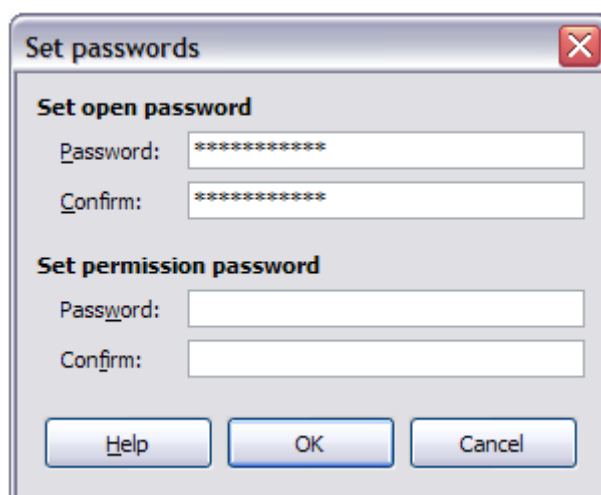


Figure 19: Setting a password to encrypt a PDF

Note

Another choice is to use **File > Export**. This opens the Export dialog. Select the PDF file format, file name and location and click **Export**. This then opens the PDF Options dialog, as described above. Click **Export** when all the selections have been made.

Exporting to XHTML

LibreOffice uses the term “export” for some file operations involving a change of file type. LibreOffice can export files to XHTML. Other formats may be made available through extensions.

To export to XHTML, choose **File > Export**. On the Export dialog, specify a file name for the exported document, then select the XHTML in the *File format* list and click the **Export** button.

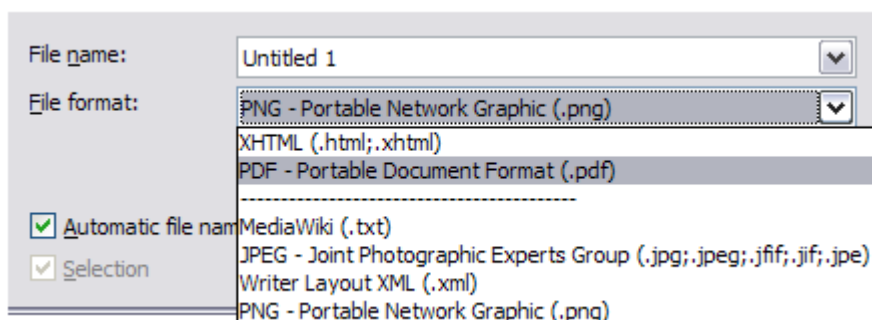


Figure 20: Export file formats

E-mailing Writer documents

LibreOffice provides several ways to quickly and easily send a Writer document as an e-mail attachment in one of three formats: ODT (OpenDocument Text, Writer’s default format), DOC (Microsoft Word format), or PDF.

Note

Documents can only be sent from the LibreOffice mail merge wizard if a mail profile has been set up in **Tools > Option > LibreOffice Writer > Mail Merge E-mail**.

To send the current document in ODT format, choose:

- 1) **File > Send > Document as E-mail**, or **File > Send > E-mail as OpenDocument Text**. Writer opens your default e-mail program. The document is attached.
- 2) In your e-mail program, enter the recipient, subject, and any text you want to add, then send the e-mail.

If you choose **E-mail as Microsoft Word**, Writer first creates a DOC file and then opens your e-mail program with the DOC file attached. Similarly, if you choose **E-mail as PDF**, Writer opens the PDF Options dialog where you can select the settings you want, then creates a PDF and then opens your email program with the PDF file attached.

E-mailing a document to several recipients

To e-mail a document to several recipients, you can use the features in your e-mail program or you can use LibreOffice’s mail merge facilities to extract email addresses from an address book.

You can use LibreOffice’s mail merge to send e-mail in two ways:

- Use the Mail Merge Wizard to create the document and send it. See Chapter 11, Using Mail Merge, for details.

- Create the document in Writer without using the Wizard, then use the Wizard to send it. This method is described here.

To use the Mail Merge Wizard to send a previously-created Writer document:

- 1) Open the document in Writer. Click **Tools > Mail Merge Wizard**. On the first page of the wizard, select **Use the current document** and click **Next**.

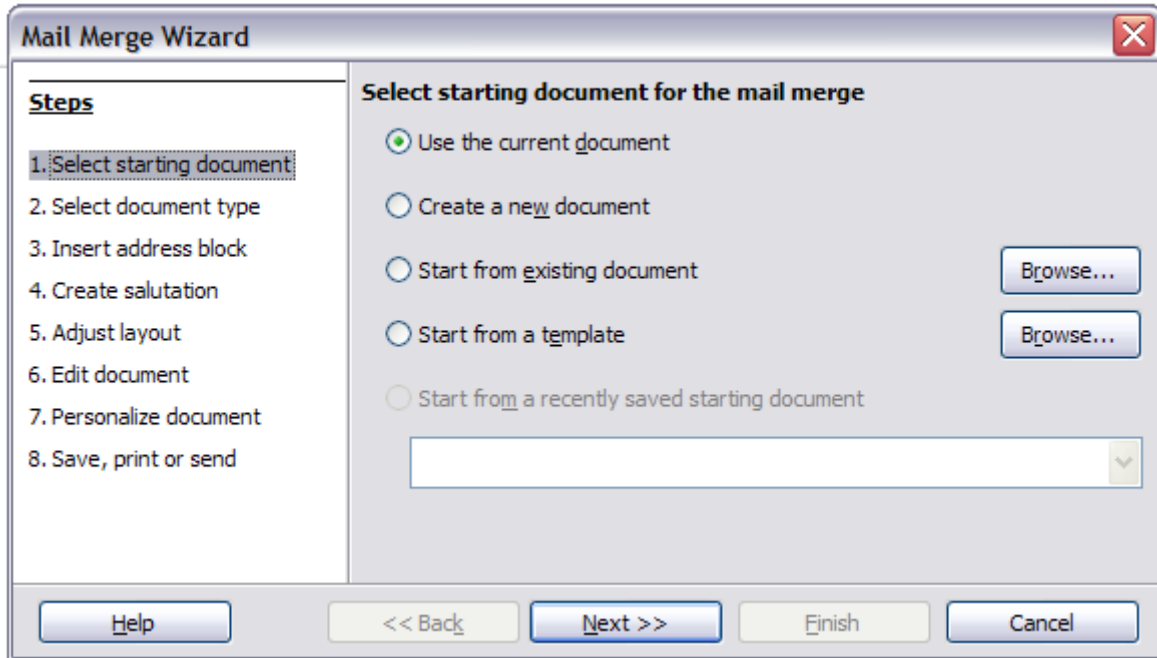


Figure 21: Select starting document

- 2) On the second page, select **E-mail message** for the type of document to create and click **Next**.

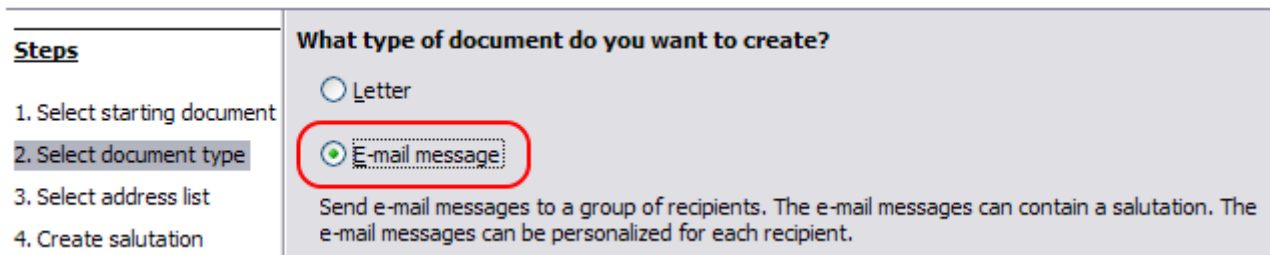


Figure 22: Select document type

- 3) On the third page, click the **Select Address List** button. Select the required address list (even if only one is shown) and then click **OK**. (If the address list you need is not shown here, you can click **Add** to find and add it to the list.)

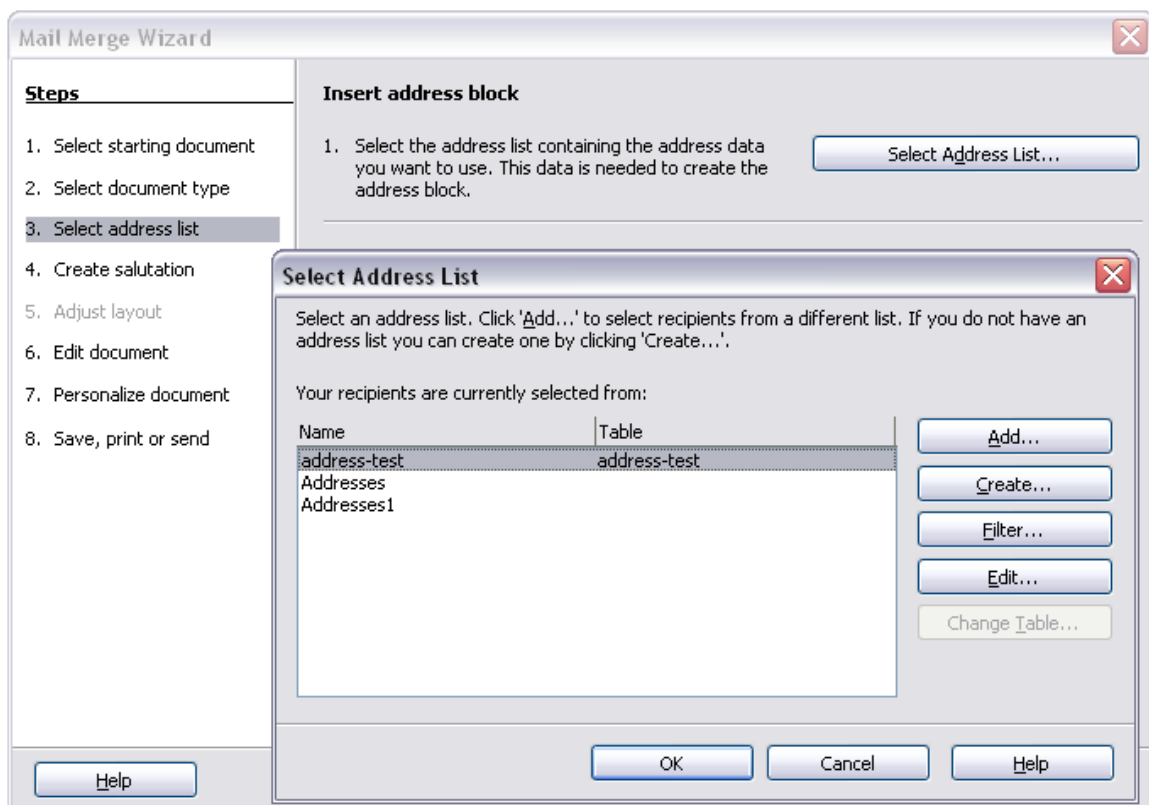


Figure 23: Selecting an address list

- 4) Back on the *Select address list* page, click **Next**. On the *Create salutation* page, deselect the checkbox by **This document should contain a salutation**.

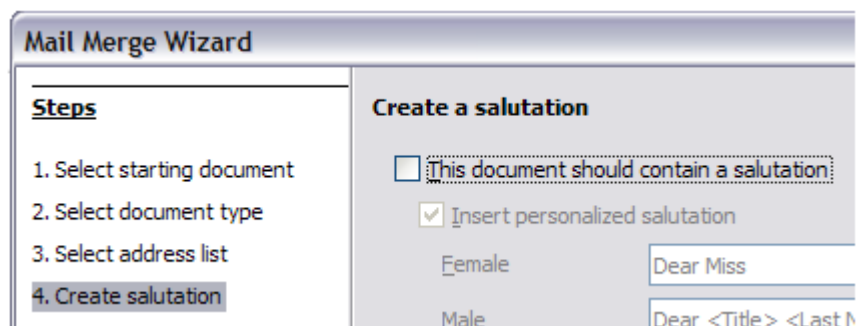


Figure 24: Deselecting a salutation

- 5) In the left-hand list, click **Step 8. Save, print or send**. LibreOffice displays a “Creating documents” message and then displays the *Save, print or send* page of the Wizard.
- 6) Select **Send merged document as E-Mail**. The lower part of the page changes to show e-mail settings choices.
- 7) Type a subject for your email and click **Send documents**. LibreOffice sends the e-mails.

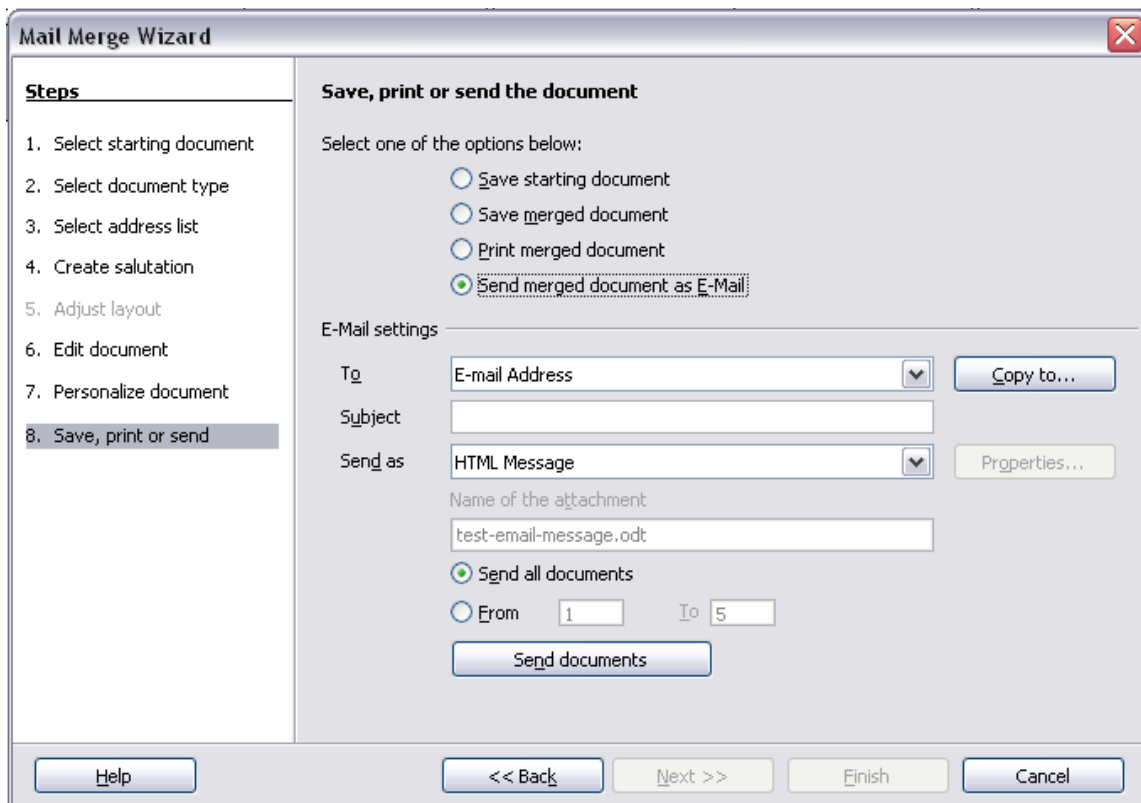


Figure 25: Sending a document as an email message

Digital signing of documents

To sign a document digitally, you need a personal key, also known as a certificate. A personal key is stored on your computer as a combination of a private key, which must be kept secret, and a public key, which you add to your documents when you sign them. You can get a certificate from a certification authority, which may be a private company or a governmental institution.

When you apply a digital signature to a document, a kind of checksum is computed from the document's content plus your personal key. The checksum and your public key are stored together with the document.




When someone later opens the document on any computer with a recent version of LibreOffice, the program will compute the checksum again and compare it with the stored checksum. If both are the same, the program will signal that you see the original, unchanged document. In addition, the program can show you the public key information from the certificate. You can compare the public key with the public key that is published on the web site of the certificate authority.

Whenever someone changes something in the document, this change breaks the digital signature.

On Windows operating systems, the Windows features of validating a signature are used. On Solaris and Linux systems, files that are supplied by Thunderbird, Mozilla or Firefox are used. For a more detailed description of how to get and manage a certificate, and signature validation, see "Digital Signatures" in the LibreOffice Help.

To sign a document:

- 1) Choose **File > Digital Signatures**.
- 2) If you have not saved the document since the last change, a message box appears. Click **Yes** to save the file.
- 3) The Digital Signatures dialog opens. Click **Sign Document** to add a public key to the document.

- 4) In the Select Certificate dialog, select your certificate and click **OK** to return to the Digital Signatures dialog.
- 5) The certificate used is displayed in the dialog with an icon next to its name. This icon indicates the status of the digital signature.
 - An icon with a red seal  indicates that the document was signed and the certificate was validated.
 - An icon with a yellow caution triangle overlaying the red seal  indicates that the document is signed but that the certificate could not be validated.
 - An icon of a yellow caution triangle  indicates an invalid digital signature.
- 6) Click **Close** to apply the digital signature.

A signed document shows an icon in the status bar. You can double-click the icon to view the certificate. More than one signature can be added to a document.

Removing personal data

You may wish to ensure that personal data, versions, comments, hidden information, or recorded changes are removed from files before you send them to other people or create PDFs from them.

In **Tools > Options > LibreOffice > Security > Options**, you can set LibreOffice to remind (warn) you when files contain certain information and remove personal information automatically on saving.

To remove personal and some other data from a file, go to **File > Properties**. On the *General* tab, uncheck **Apply user data** and then click the **Reset** button. This removes any names in the created and modified fields, deletes the modification and printing dates, and resets the editing time to zero, the creation date to the current date and time, and the version number to 1.

To remove version information, either (a) go to **File > Versions**, select the versions from the list and click **Delete**, or (b) use **Save As** and save the file with a different name.