



LibreOffice
The Document Foundation

Writer Guide

Chapter 11 *Using Mail Merge*

Form Letters, Mailing Labels, and Envelopes

Copyright

This document is Copyright © 2011–2014 by the LibreOffice Documentation Team. Contributors are listed below. You may distribute it and/or modify it under the terms of either the GNU General Public License (<http://www.gnu.org/licenses/gpl.html>), version 3 or later, or the Creative Commons Attribution License (<http://creativecommons.org/licenses/by/4.0/>), version 4.0 or later.

All trademarks within this guide belong to their legitimate owners.

Contributors

Ron Faile Jr.
Jean Hollis Weber
John A Smith

Feedback

Please direct any comments or suggestions about this document to the Documentation Team's mailing list: documentation@global.libreoffice.org

Note: Everything you send to a mailing list, including your email address and any other personal information that is written in the message, is publicly archived and cannot be deleted.

Acknowledgments

This chapter is adapted and updated from Chapter 11 of the *OpenOffice.org 3.3 Writer Guide*. The contributors to that chapter are:

Agnes Belzunce	Dick Detwiler	Peter Hillier-Brook
Peter Kupfer	Alan Madden	Iain Roberts
Barbara M. Tobias	Jean Hollis Weber	Michele Zarri

Publication date and software version

Published 19 July 2014. Based on LibreOffice 4.2.

Note for Mac users

Some keystrokes and menu items are different on a Mac from those used in Windows and Linux. The table below gives some common substitutions for the instructions in this chapter. For a more detailed list, see the application Help.

<i>Windows or Linux</i>	<i>Mac equivalent</i>	<i>Effect</i>
Tools > Options menu selection	LibreOffice > Preferences	Access setup options
<i>Right-click</i>	<i>Control+click</i> and/or <i>right-click</i> depending on computer setup	Opens a context menu
<i>Ctrl (Control)</i>	⌘ (<i>Command</i>)	Used with other keys
<i>F5</i>	<i>Shift+⌘+F5</i>	Opens the Navigator
<i>F11</i>	⌘+T	Opens the Styles and Formatting window

Contents

Copyright.....	2
Contributors.....	2
Feedback.....	2
Acknowledgments.....	2
Publication date and software version.....	2
Note for Mac users.....	2
What is mail merge?.....	4
Creating and registering the data source.....	4
Deregistering a data source.....	7
Re-registering an existing data source.....	7
Creating a form letter.....	7
Editing merged documents.....	11
Printing mailing labels.....	11
Preparing for printing.....	11
Removing blank lines from labels.....	14
Printing.....	15
Editing a saved file of mailing labels.....	15
Printing envelopes.....	16
Setting up envelopes for printing.....	16
Merging and printing the envelopes.....	19
Creating an envelope template.....	19
Using the Mail Merge Wizard to create a form letter.....	20
Step 1: Select starting document.....	20
Step 2: Select document type.....	20
Step 3: Insert address block.....	21
Selecting the data source (address list).....	22
Selecting the address block.....	22
Matching the fields.....	23
Step 4: Create salutation.....	24
Step 5: Adjust layout.....	26
Step 6: Edit document and insert extra fields.....	27
Step 7: Personalize documents.....	28
Step 8: Save, print or send.....	29

What is mail merge?

LibreOffice Writer provides very useful features to create and print:

- Multiple copies of a document to send to a list of different recipients (form letters)
- Mailing labels
- Envelopes

All these facilities, though different in application, are based around the concept of a registered data source, from which is derived the variable address information necessary to their function.

This chapter describes the entire process. The steps include:

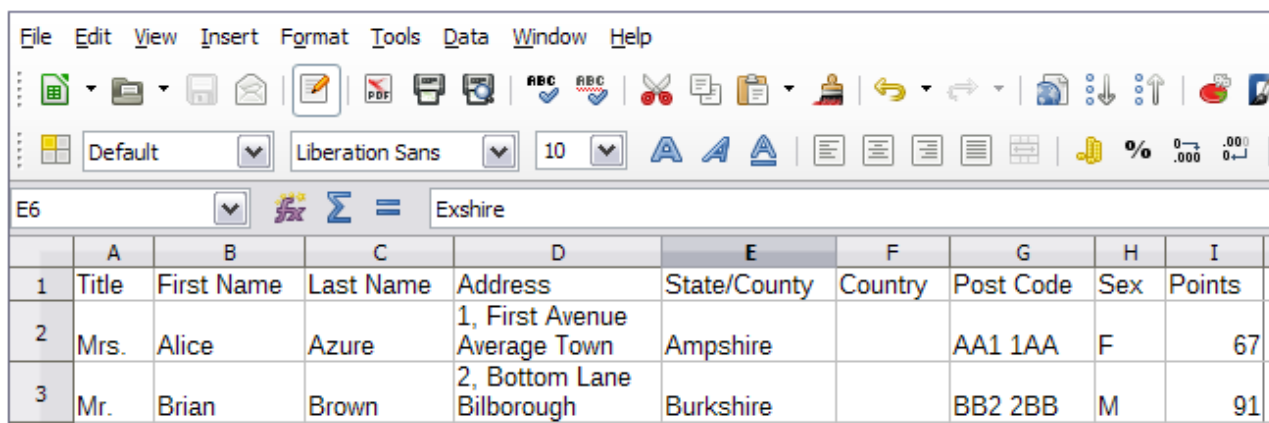
- 1) How to create and register a data source.
- 2) How to create and print form letters, mailing labels, and envelopes.
- 3) Optionally, how to save the output in an editable file instead of printing it directly.

Creating and registering the data source

A *data source* is a database containing the name and address records (and optionally other information) from which a mailing list may be derived. Although you can create and print mailing labels and envelopes without using a data source, in most cases using one is the best approach. This chapter assumes that you are using a data source.

LibreOffice can access a wide variety of sources of data to create the database, including spreadsheets, text files and databases such as MySQL, Adabas, and ODBC. If the information to be used in the mail merge is currently in a format that LibreOffice cannot access directly, you need to convert it, for example by exporting it to a comma-separated values (CSV) file.

For the following example we start with a spreadsheet with the following column (field) headers: *Title, First Name, Last Name, Address, State/County, Country, Post Code, Sex, and Points*. A sample of data is shown in Figure 1.

The image shows a screenshot of a LibreOffice spreadsheet application. The menu bar at the top includes File, Edit, View, Insert, Format, Tools, Data, Window, and Help. Below the menu bar is a toolbar with various icons for file operations, editing, and formatting. The spreadsheet itself has a grid with columns labeled A through I and rows numbered 1 through 3. The data in the spreadsheet is as follows:

	A	B	C	D	E	F	G	H	I
1	Title	First Name	Last Name	Address	State/County	Country	Post Code	Sex	Points
2	Mrs.	Alice	Azure	1, First Avenue Average Town	Ampshire		AA1 1AA	F	67
3	Mr.	Brian	Brown	2, Bottom Lane Bilborough	Burkshire		BB2 2BB	M	91

Figure 1: Spreadsheet data example

After being created as described below, for a data source to be directly accessible from within a Writer document, it must be registered. You only need to do this once; after that, the data source is available to all components of LibreOffice.

- 1) From within any Writer document, or from the LibreOffice Start Center, choose **File > Wizards > Address Data Source**.

- 2) The choices on the first page of the wizard vary with your operating system. Select the appropriate type of external address book. In this example, it is **Other external data source**. Click **Next**.

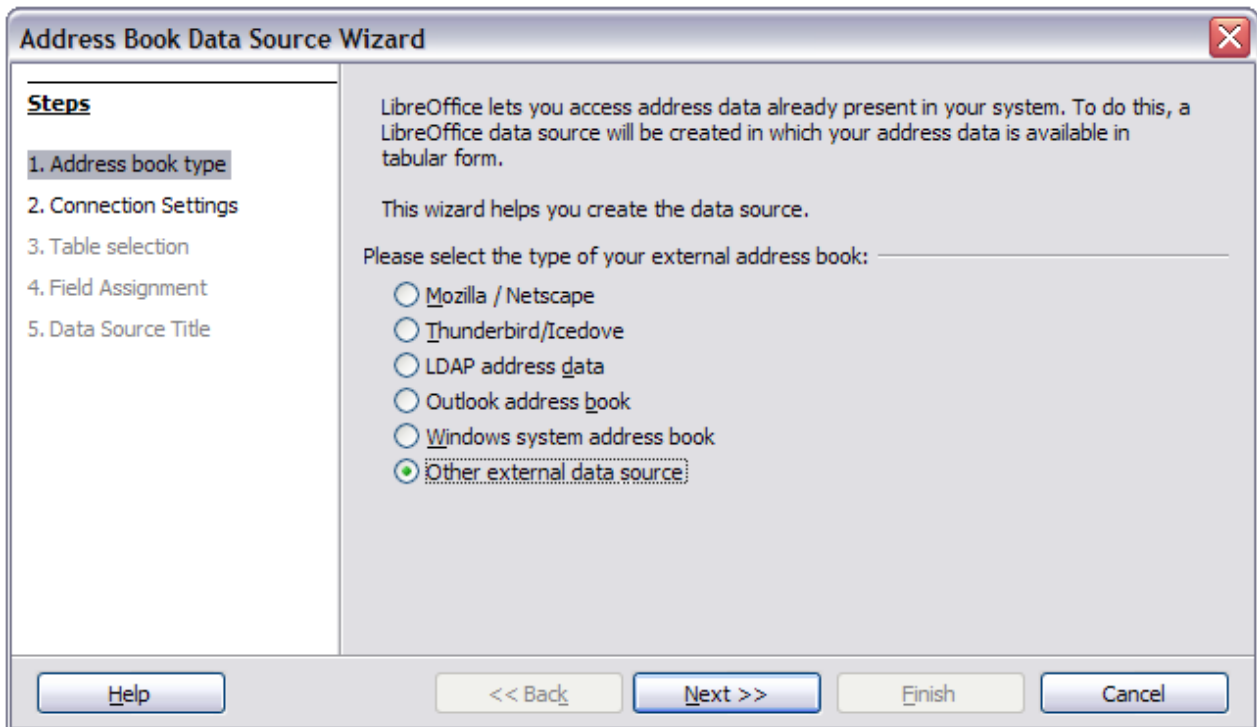


Figure 2: Select type of external address book

- 3) On the next page of the Wizard, click the **Settings** button.

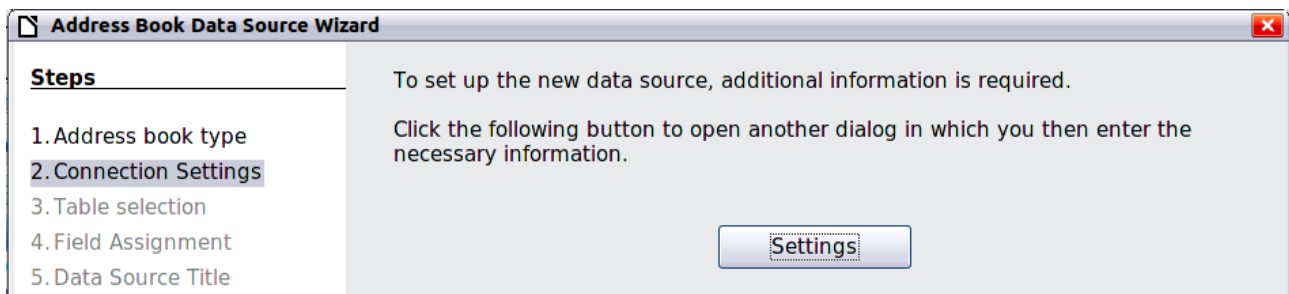


Figure 3: Starting the Settings part of the Wizard

- 4) In the Data Source Properties page, select the Database type. In our example, it is **Spreadsheet**. Click **Next**.

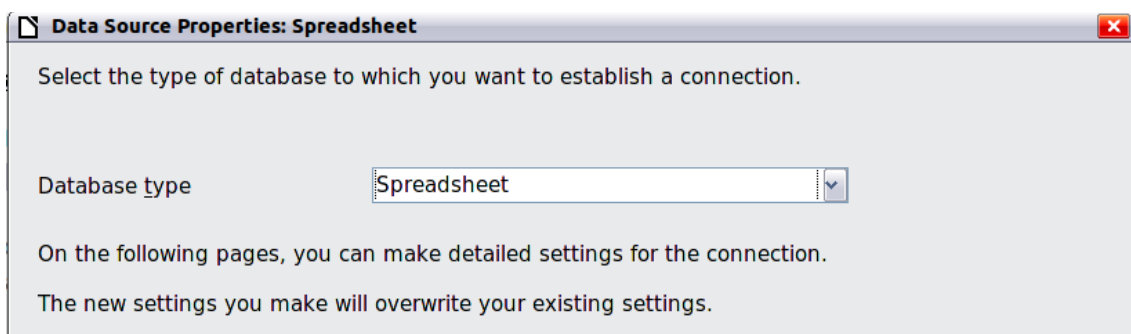


Figure 4: Selecting the database type

- 5) In the next dialog, click **Browse** and navigate to the spreadsheet that contains the address information. Select the spreadsheet and click **Open** to return to this dialog. At this time you may wish to test that the connection has been correctly established by clicking on the **Test Connection** button (not shown in illustration).

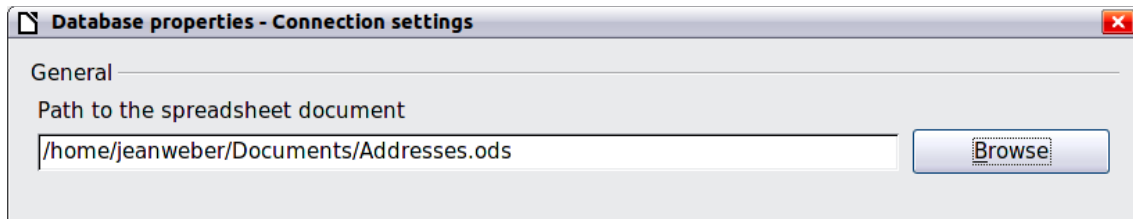


Figure 5: Selecting the spreadsheet document

- 6) Click **Finish**.
- 7) On the following page, click **Next**. Because this is a spreadsheet, *do not* click **Field Assignment**.

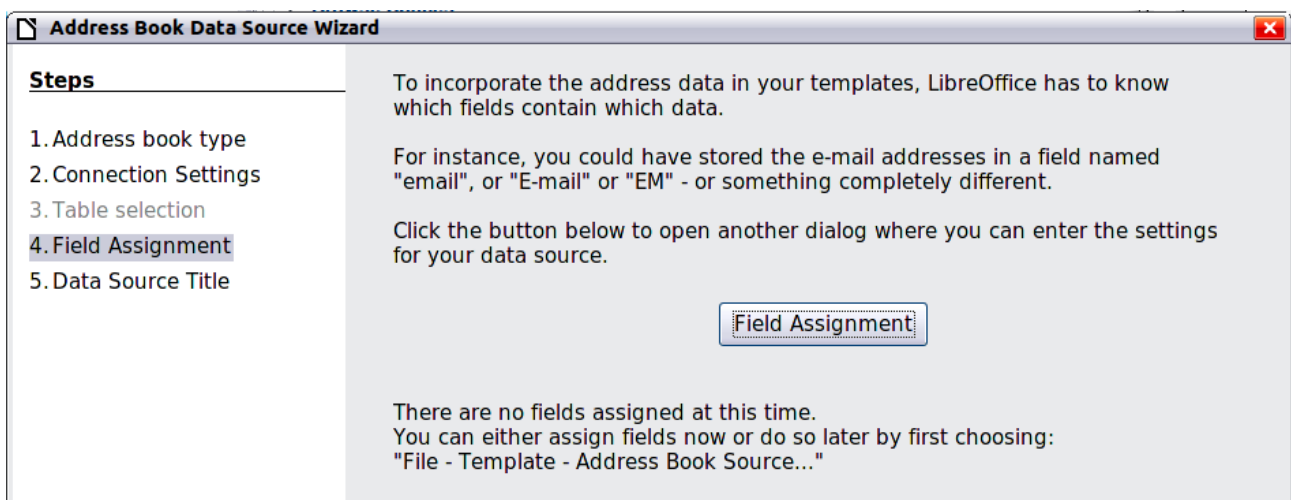


Figure 6: Because this is a spreadsheet, *do not* click **Field Assignment**

- 8) A database file will be created. Name the file in the path in the Location field. The default is **Addresses.odt**; but you may replace **Addresses** with another name if you wish. You may also change the name in the "Address book name" field. The name in this field is the registered name, which LibreOffice will display in data source listings. In our example, the name "Points" was used for both.

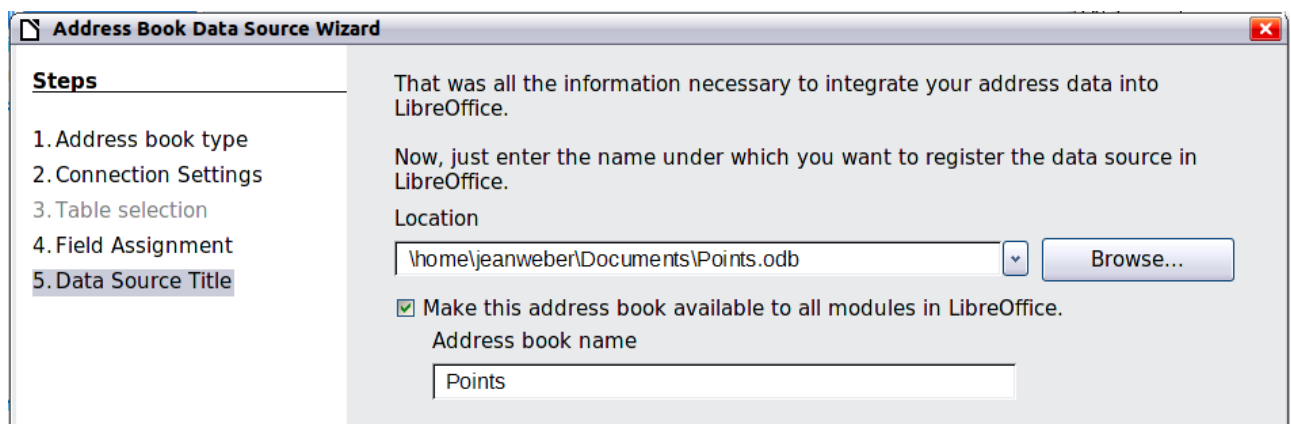


Figure 7: Name the .odb file and the address book

- 9) Click **Finish**. The data source is now registered.

Deregistering a data source

To remove a registered data source from LibreOffice so it is no longer available for use, as for example an obsolete address list, do the following:

- 1) Open the *Data sources* window (by selecting **View > Data Sources** from the Menu bar, or by pressing *F4*, or by selecting the Data Sources icon on the Standard toolbar).
- 2) In the left pane, the *Data source explorer*, right-click a data source.
- 3) Select **Registered databases** from the context menu.
- 4) In the *Registered databases* dialog which opens, select the data source to be removed.
- 5) Click **Delete**, then click **Yes** in the confirmation box which opens.
- 6) Repeat steps 4) and 5) as required.
- 7) Click **OK** to close the *Registered databases* dialog.

This does not delete the database from your system. It can be registered again using the methods outlined below.

Re-registering an existing data source

To re-register an existing database file of addresses do the following:

- 1) Open the *Data sources* window (by selecting **View > Data Sources** from the Menu bar, or by pressing *F4*, or by selecting the Data Sources icon on the Standard toolbar).
- 2) In the left pane, the *Data source explorer*, right-click a data source.
- 3) Select **Registered databases** from the context menu.
- 4) In the *Registered databases* dialog which opens, click the **New** button
- 5) In the *Create Database Link* dialog which opens, click the **Browse** button and navigate to the database file location and select it. Click the **Open** button to return to the *Create Database Link* dialog.
- 6) Change the **Registered name** if required.
- 7) Click the **OK** button to exit this dialog.
- 8) Click the **OK** button to exit the *Registered databases* dialog.

Creating a form letter

Example: Sending a letter to your customer base

A mail order company organized a campaign to assign credit points to their customers according to the quantity of goods they buy during one year. At the end of the year, they want to send a letter to each customer to show the total of credit points collected.

You can create a form letter manually, which is the simplest and most comprehensive method and is described here, or you can use the Mail Merge wizard as described in “Using the Mail Merge Wizard to create a form letter” starting on page 20. If you elect to use the wizard, pay close attention to its current limitations, as identified within its description.

- 1) Create a new text document: **File > New > Text Document**, or open a pre-existing form letter with **File > Open**.
- 2) Display the registered data sources: **View > Data sources** (or press *F4*).

- Find the data source that you wish to use for the form letter, in this case **Points**. Expand the **Points** and **Tables** folders, and select **Sheet1**. The address data file is displayed.

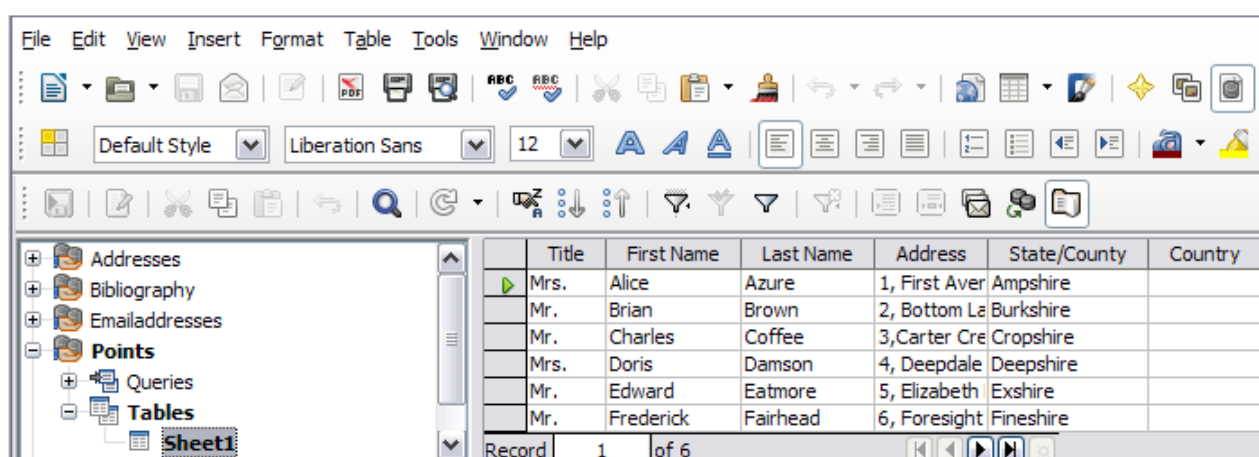


Figure 8: Selecting the data source

- Now create or modify the form letter by typing in the text, punctuation, line breaks, and so on that will be present in all of the letters.

To add the mail-merge fields where needed (such as names and addresses), click in the field heading and drag it to the appropriate point in the letter.

Note that address lines should be in individual paragraphs, not separated by line breaks as might seem preferable. The reason for this will be made clear in the next step.

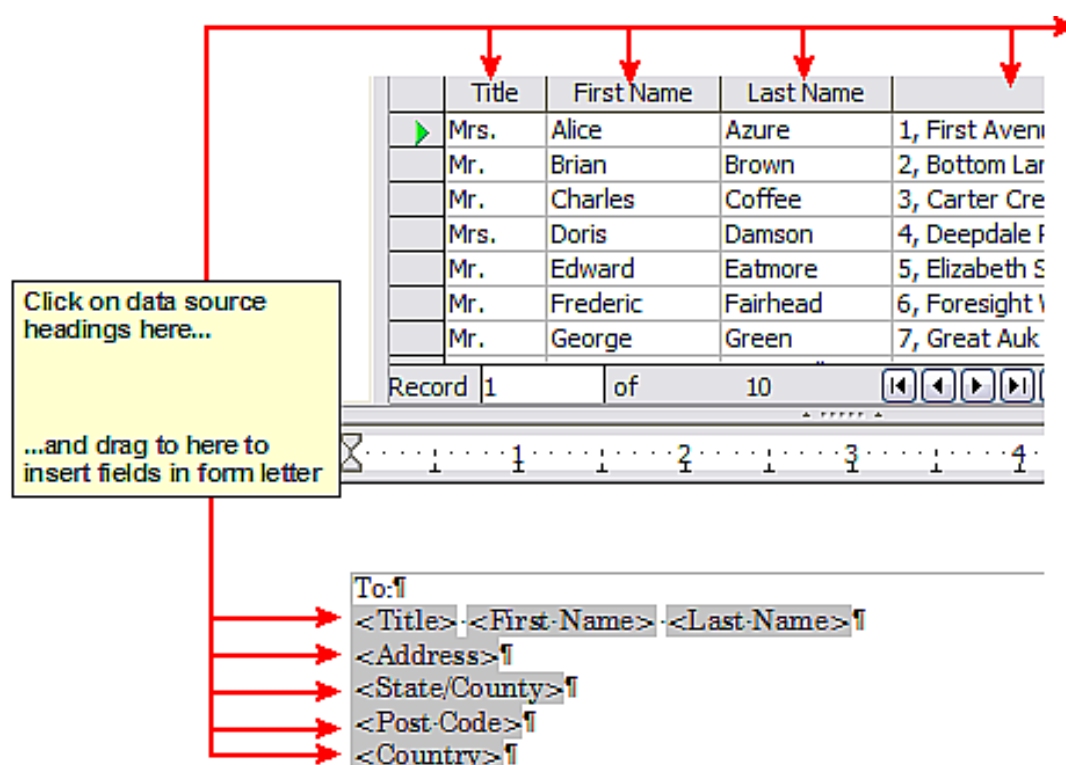


Figure 9: Dragging fields to the body of the form letter

- Continue until you have composed the entire document. At this time you may wish to consider suppressing any blank lines that may appear in the resulting letters. If not, skip ahead to Step 7.

To:¶
 <Title> <First-Name> <Last-Name>¶
 <Address>¶
 <State/County>¶
 <Post-Code>¶
 <Country>¶
 5-November-2007¶
 Dear <Title> <Last-Name>,¶
 Thank-you-very-much-for-your-participation-in-our-“Points”-promotion-We-are-pleased
 to-inform-you-that-you-have-earned-<Points>-this-year.¶
 Your-loyalty-to-our-company-is-greatly-appreciated-and-we-hope-to-be-of-continuing
 service-in-the-future.¶
 Yours-sincerely¶
 General-Supply-plc-
 Wetherbridge → XX7-1YY¶

Figure 10: The completed form letter

- 6) To suppress blank lines:
 - a) Click at the end of the first paragraph to be suppressed if empty, and then choose **Insert > Fields > Other** to display the Fields dialog.
 - b) Select the *Functions* tab and then click on **Hidden Paragraph** in the *Type* column.

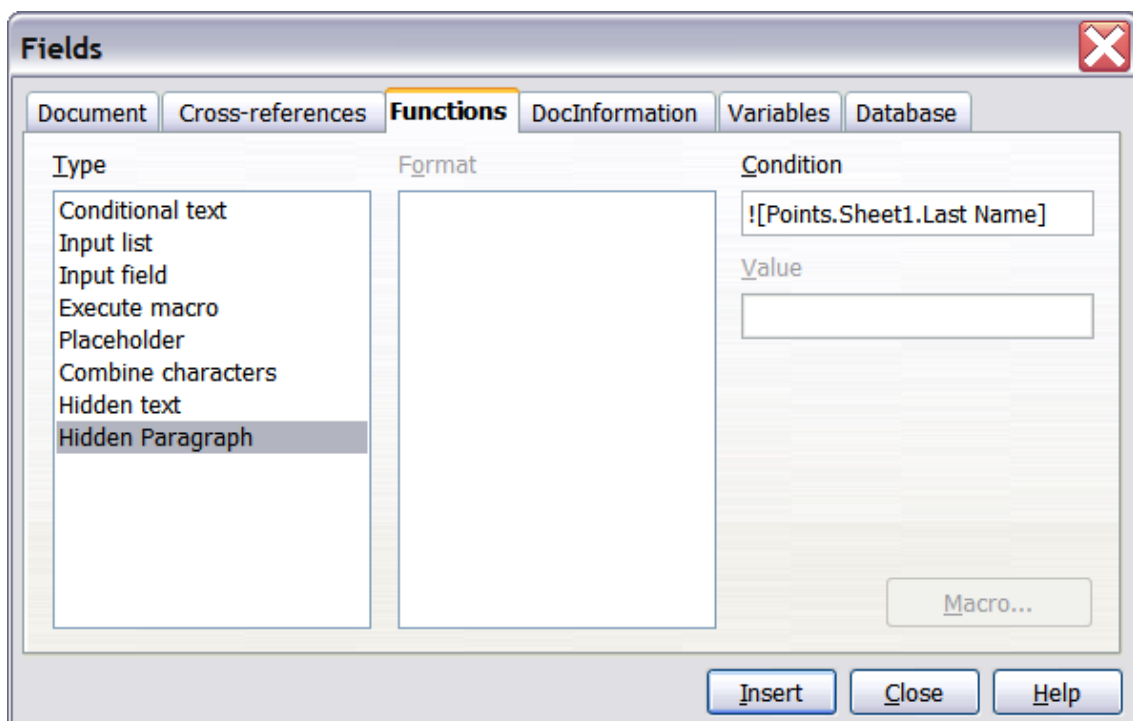


Figure 11: Hidden paragraph insertion

- c) Now click in the **Condition** box and enter the details of the condition that defines a blank address field. It has the general form of:
 ![Database.Table.Database field]
 where the '!' (NOT) character indicates the negative case and the square brackets indicate the condition.
 For example, in our Points database the condition to test if the *Last Name* field is empty would be:
 ![Points.Sheet1.Last Name] as illustrated in Figure 11.
- To test for multiple conditions use the operators *AND* and/or *OR* between the conditional statements, for example:
 ![Points.Sheet1.Title]AND![Points.Sheet1.Last Name]
- d) Click **Insert**, but do not close the dialog until you have amended all the lines that should be suppressed.
- 7) The document is now ready to be printed.
- a) Choose **File > Print** and respond with **Yes** in the message box.

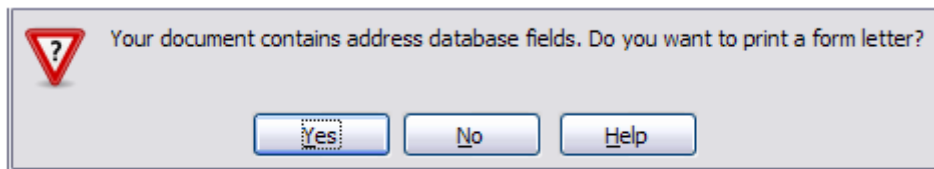


Figure 12: Mail merge confirmation message

- b) In the Mail Merge dialog (Figure 13), you can choose to print all records or selected records. To select records to be printed, use *Ctrl+click* to select individual records. To select a block of records, select the first record in the block, scroll to the last record in the block, and *Shift+click* on the last record.
- c) Click **OK** to send the letters directly to the printer. Or, you can save the letters to a file for further editing or formatting; see “Editing merged documents” below.
- d) If you have not saved the original, prototype form letter document (template) previously, then you should do so now. Having a form letter template could greatly simplify the creation of other form letters in the future and is highly recommended.

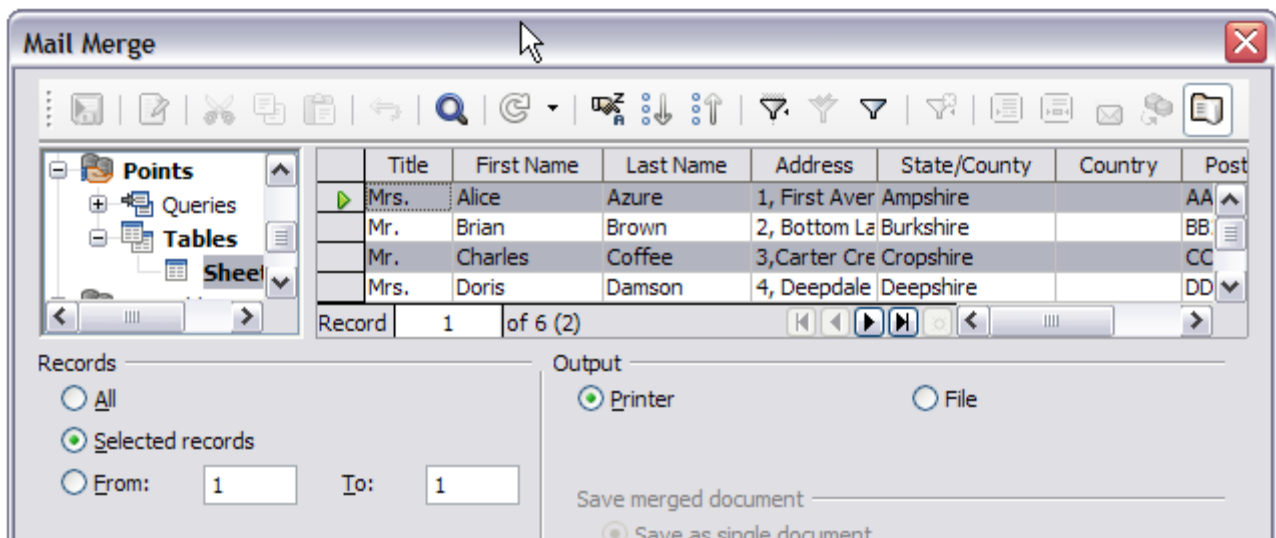
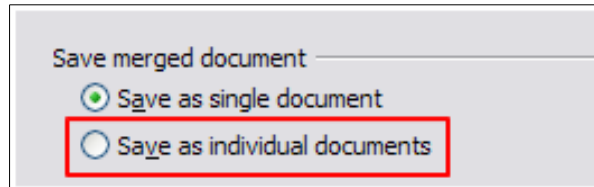


Figure 13: The Mail Merge dialog

Editing merged documents

You may prefer to save the letters to a file, to allow for proofreading or some later formatting. To do this:

- 1) In the Mail Merge dialog (Figure 13), select **File** in the output section, instead of using the default **Printer** selection.
- 2) This changes the dialog to display the *Save merged document* section, where **Save as single document** is preselected. You can choose to save each letter as an individual document instead.



- 3) Click **OK**. In the Save as dialog, enter a file name for the saved letters and choose a folder in which to save them. The letters will be saved consecutively as separate pages in the single document, or numbered consecutively in individual files if saved as individual documents.

You can now open the letters and edit them individually as you would edit any other document.

Printing mailing labels

Before beginning this process, note the brand and type of labels you intend to use.

Preparing for printing

To prepare mailing labels for printing:

- 1) Choose **File > New > Labels**.
- 2) On the **Options** tab, ensure that the **Synchronize contents** option is selected.
- 3) On the **Labels** tab (Figure 15), select the **Database** and **Table**. Select the **Brand** of labels to be used, and then select the **Type** of label.
- 4) If you are unable to identify your label product in the list, then you can define the labels you have. Select the **User** setting in the *Type* selection box. Click on the **Format** tab of the Labels dialog. The default settings are shown in Figure 16. Take a ruler and measure on your labels those dimensions illustrated in Figure 14, and enter them into the respective boxes on the left side.

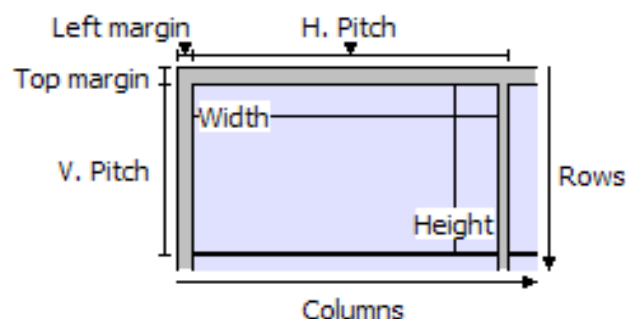


Figure 14: Required information for label set-up

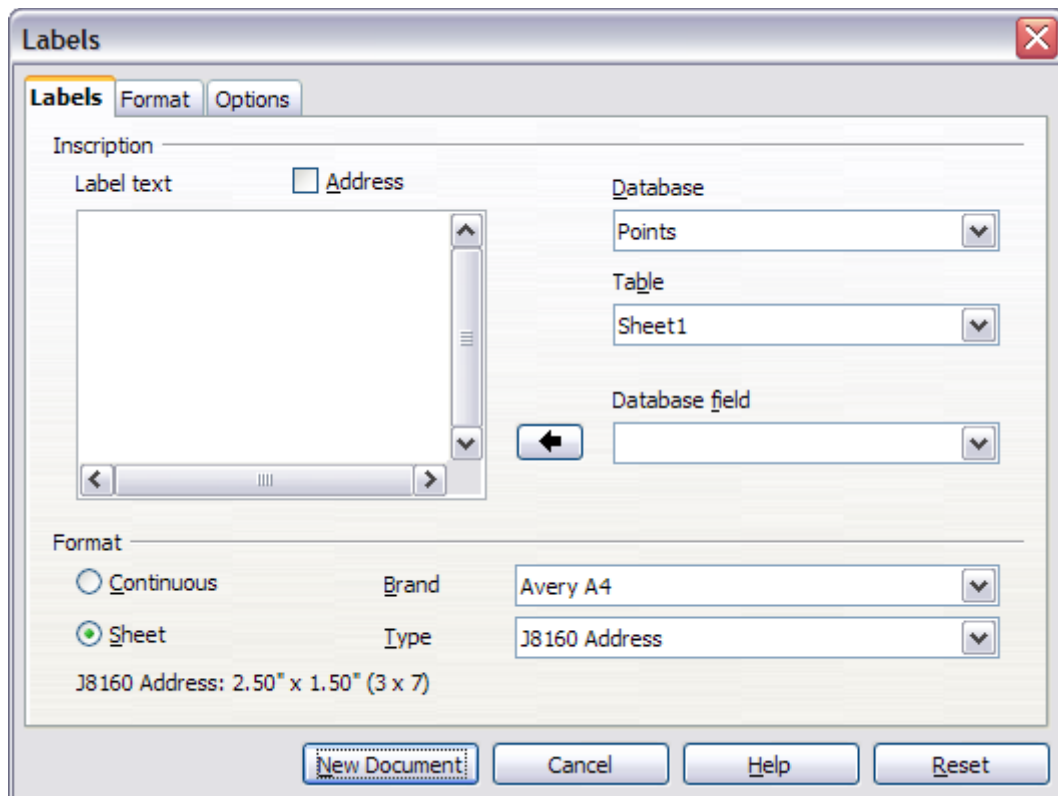


Figure 15: Select Database, Table, label Brand, and label Type

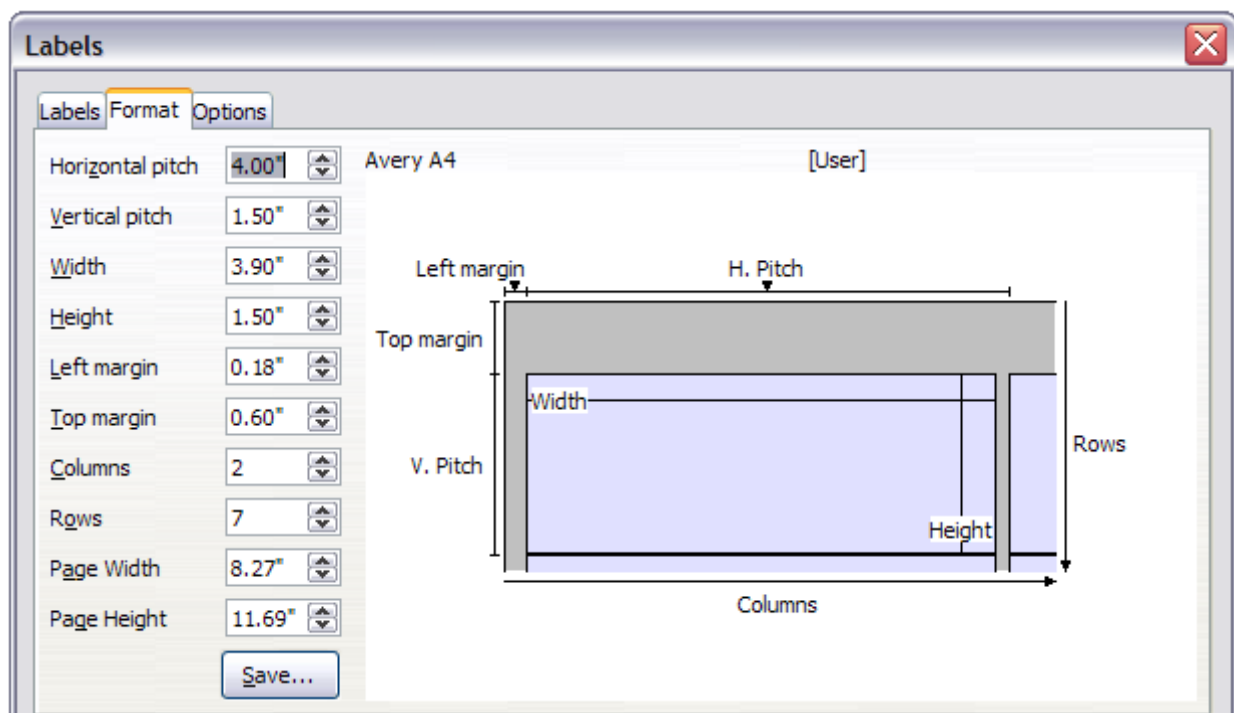


Figure 16: User label default settings

- 5) You can now save your label template if you are likely to use it again. Click **Save**.
- 6) In the Save Label Format dialog that opens (Figure 17), enter names for your label **Brand** and **Type**. Click **OK**.

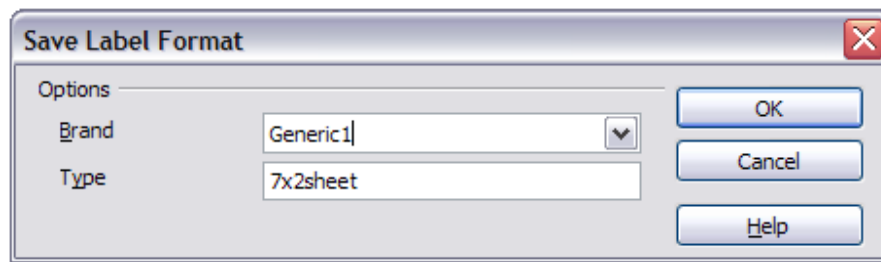


Figure 17: Name and save the label.

- 7) Click the **Labels** tab. Click the drop-down arrow under **Database field**. Select the first field to be used in the label (in this example, **Title**). Click the left arrow button to move this field to the **Label text** area, as shown in Figure 18.

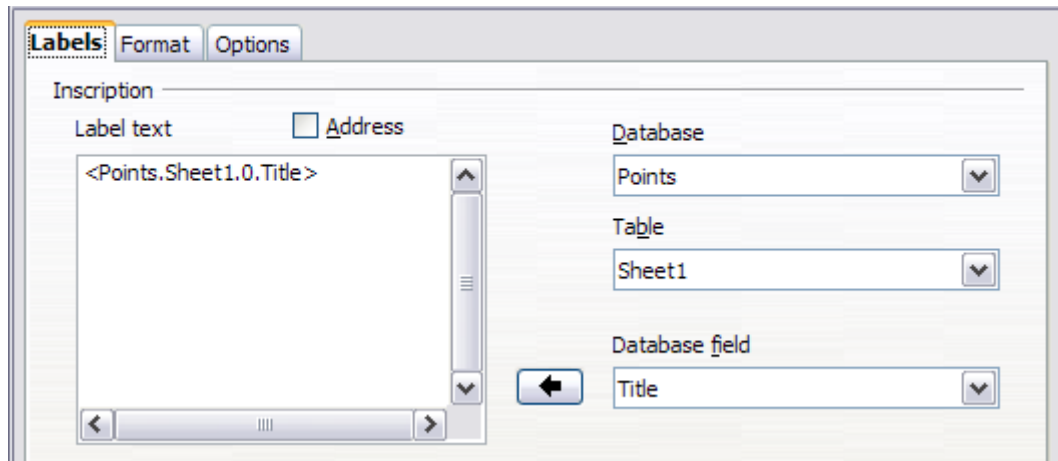


Figure 18: Move fields from Database field list to Label text area

- 8) Continue adding fields and inserting desired punctuation, spaces, and line breaks until the label is composed. Figure 19 shows the completed label.

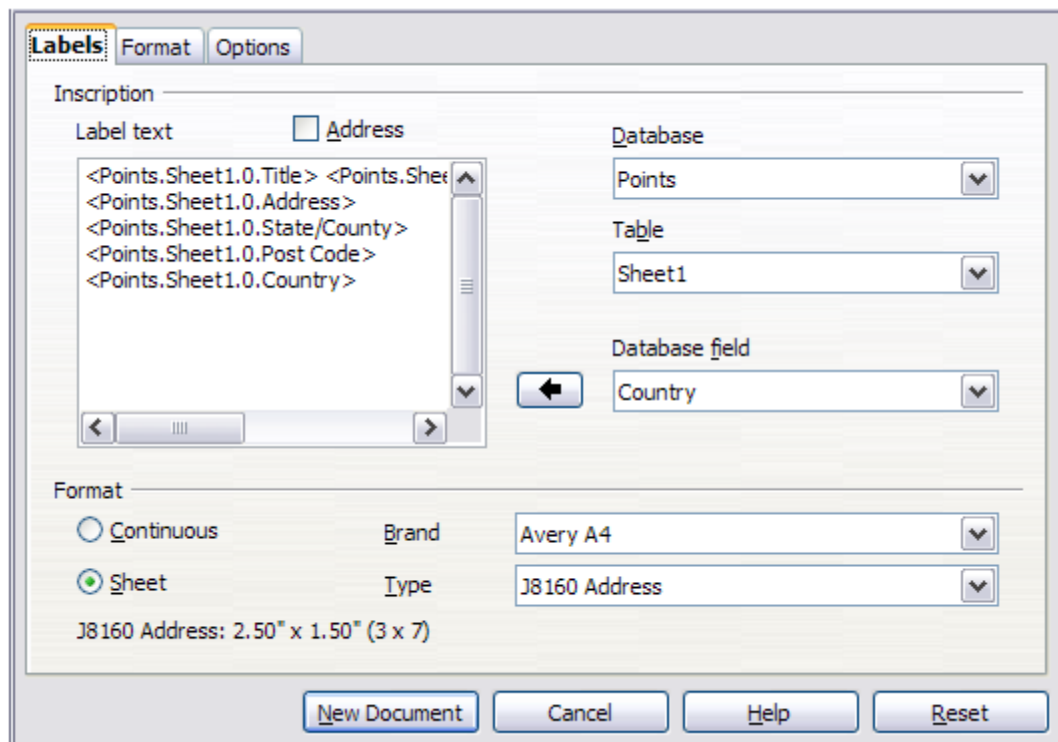



Figure 19: The completed label

- 9) Click **New Document**. You now have a new, single-page document containing a series of frames, one for each label of the selected type and filled with the data source address fields that you selected. Quite often some of the fields in your address data source will be unused, leading to blank lines in your labels. If this is not important, go to “Printing” on page 15; otherwise, continue with “Removing blank lines from labels”.

Removing blank lines from labels

- 1) First ensure that the label frames are showing the field contents (data source headings), rather than their underlying field names. If this is not the case, then either press *Ctrl+F9* or choose **View > Field Names** to toggle the view.
- 2) Next, ensure that you can see non-printing characters, such as paragraph marks, line breaks and so on. If these are not already visible, choose **View > Nonprinting Characters**

from the Menu bar, or press *Ctrl+F10*, or click on the **Nonprinting Characters** icon () on the Standard toolbar.

You will now see that address field separation is created by line breaks (↵), rather than paragraphs (¶). As the suppression of blank address fields depends on hiding paragraphs, not lines, you need to replace line breaks with paragraphs as follows.

- 3) Click in the first label, at the end of the last data source address field in the first line of the label. Press *Delete* to remove the new line character and then press *Return* (or the *Enter* key) to insert a paragraph marker. Repeat this action for each line in the address.

If the line spacing in the first label is not satisfactory, you may wish to correct this before proceeding, by modifying the paragraph style associated with the address. Unless you have changed it, the address uses the Default style.

Caution



The objective of step 3) is to replace all line breaks at the end of data source address fields with paragraphs. Sometimes the address data field may be longer than the width of the label and will wrap to the next physical line: make sure that you are not misled by this into deleting and replacing anything other than line break characters.

- 4) Click again at the end of the first paragraph to be conditionally suppressed and then choose **Insert > Fields > Other**. Select the **Functions** tab and then click on **Hidden Paragraph** in the *Type* column. Now click in the **Condition** box and enter the details of the condition that defines a blank address field. It has the general form of:

`![Database.Table.Database field]`

where the ‘!’ (NOT) character indicates the negative case and the square brackets indicate the condition.

For example, in our Points database the condition to test if the *Last Name* field is empty would be

`![Points.Sheet1.Last Name]` as illustrated in Figure 11.

To test for multiple conditions, use the operators **AND** and/or **OR** between the conditional statements, for example:

`![Points.Sheet1.Title]AND![Points.Sheet1.Last Name]`

Click **Insert**, but do not close the dialog until all lines have been amended.

- 5) Repeat for each paragraph to be conditionally suppressed, remembering to advance the cursor to the end of the line in question before changing the last element of the condition and **Inserting** the result.

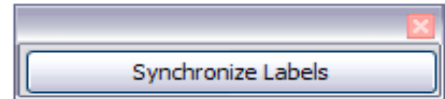
Caution



The last paragraph of the label address block ends with a special field, `Next record:Database.Table` (`Next record:Points.Sheet1` in our example), and the Hidden paragraph field **must** be inserted before this field. This can generally be accomplished by clicking at the end of the paragraph and then using the *Left Arrow* key once to skip back over it.

A clue that you omitted this action is the observation that some records have been skipped and are missing from the final output.

- 6) Remembering that we selected **Synchronize contents** earlier, you should now be able to see a small window containing a **Synchronize Labels** button. Click on this button and the hidden paragraph fields are propagated to all the labels in your document.



You now have a template suitable for future use with the same data source and type of label. If you wish to save it, use **File > Templates > Save as Template** to save it as an Open Document Text Template (.ott) into the My Templates folder in the Templates Manager dialog.

Printing

- 1) Choose **File > Print**. The message shown in Figure 12 appears. Click **Yes** to print.
- 2) In the Mail Merge dialog (Figure 13), you can choose to print all records or selected records. To select records to be printed, use *Ctrl+click* to select individual records. To select a block of records, select the first record in the block, scroll to the last record in the block, and *Shift+click* on the last record.
- 3) Click **OK** to send the labels directly to the printer.

If you prefer to save the labels to a file, perhaps to allow some later editing such as changing the typeface or paragraph format, then you should select **File** in the output section of the Mail Merge dialog, rather than using the default **Printer** selection. This changes the dialog to highlight the *Save merged document* section, where **Save as single document** is preselected.

In this case, clicking **OK** brings up the Save as dialog, where a file name can be entered for the saved labels.

If you did not save the prototype label fields document (template) in Step 6 of the *Removing blank lines from documents* paragraph, then you are prompted to do so now by another Save as dialog.

In either case, whether printing or saving to file, despite there apparently being only one page of labels, the printed or saved output will be expanded to include all of the selected records from the data source.

Editing a saved file of mailing labels

To edit a saved file of mailing labels, open the saved label file in the normal way. You will be prompted to update all links. Choose **No** for the following reason: The first label on the page is termed the “Master Label” and all other labels are linked to it. If you update the links, then all labels will end up containing the same data, which may not be what you want.

You can edit individual records in the normal way, by highlighting and changing the font name, for example.

However, you cannot edit all labels globally (for example, to change the font name for all records) by the technique of selecting the entire document. To achieve this result you have to edit the paragraph style associated with the label records as follows.

- 1) Right-click any correctly spelled word in a label record. Select **Edit Paragraph Style** from the context menu. (Note: If you click on a misspelled word, a different menu appears.)
- 2) Then from the Paragraph Style dialog, you can make changes to the font name, the font size, the indents, and other attributes.

Printing envelopes

Instead of printing mailing labels, you may wish to print directly onto envelopes. By selecting **Insert > Envelope** from the Menu bar, you may select one of two methods for their production. The first is where the envelope is embedded within a letter, generally as the first page (**Insert** in the Envelope dialog), and the second is where the envelope is an independent document (**New Document** in the dialog). In each case the addressing data may be manually entered, for example by copying and pasting from the letter with which it is associated, or it may originate within an address data source.

This section assumes the use of an address data source and, for convenience, a free-standing envelope. The production of envelopes involves two steps, setup and printing.

Setting up envelopes for printing

- 1) Choose **Insert > Envelope** from the Menu bar.
- 2) In the Envelope dialog, select the **Format** tab (Figure 20), where you can select the envelope format to use. You can then arrange the layout of the envelope to suit your requirements, together with the character and paragraph attributes to be used in the *Sender* and *Addressee* areas. These attributes are accessed using the **Edit** buttons to the right of the dialog, next to the word *Format*.

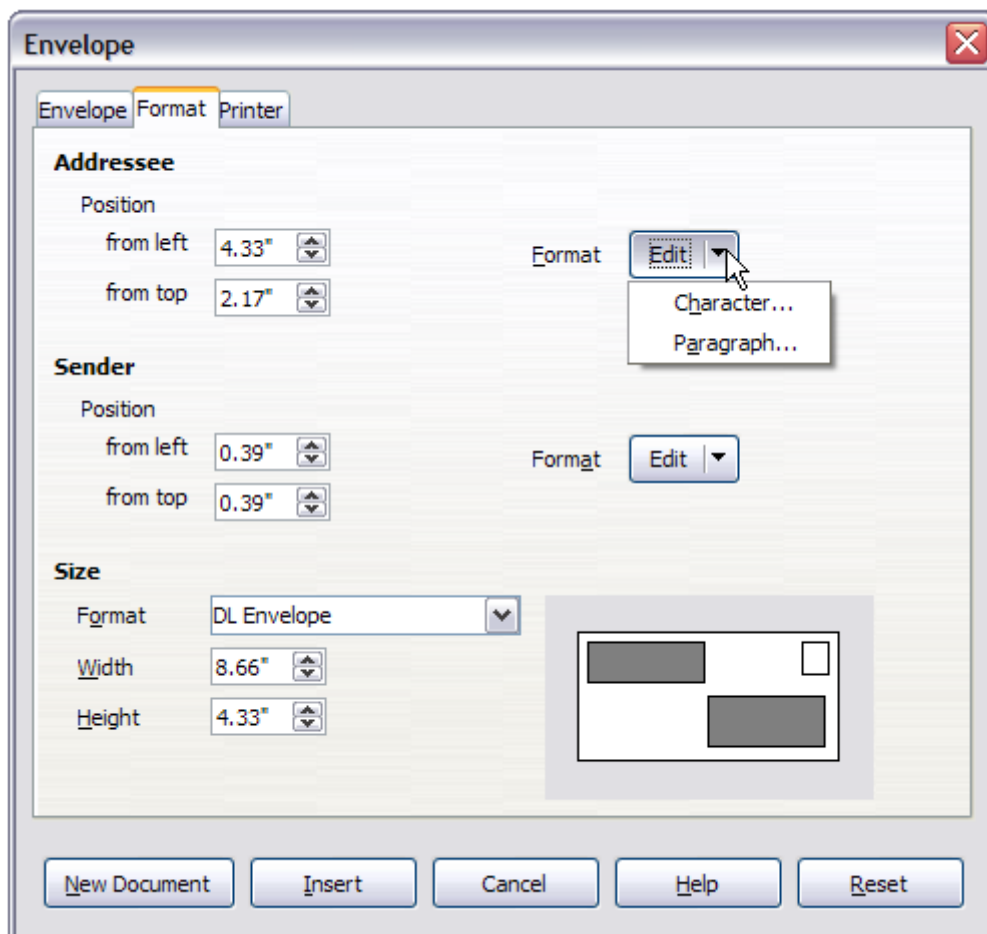


Figure 20: Envelope formatting dialog

Note

If the list of envelope formats in the *Size* section of this dialog does not include the size you need, choose **User Defined** (at the bottom of the list) and specify the envelope size using the **Width** and **Height** boxes.

Tip

At this stage it is only possible to vary the position of the origin points (upper left corners) of the frames that will hold the Sender and Addressee information, but once the envelope has been created, full adjustment of size and position will become possible and you may wish to make some cosmetic adjustments.

- 3) The next step is to select the **Printer** tab (Figure 21), from where you may choose the printer you intend to use, its setup—for example, specification of the tray holding envelopes—and other printer-related options such as envelope orientation and shifting. You may need to experiment with these settings to achieve the best results with your printer.

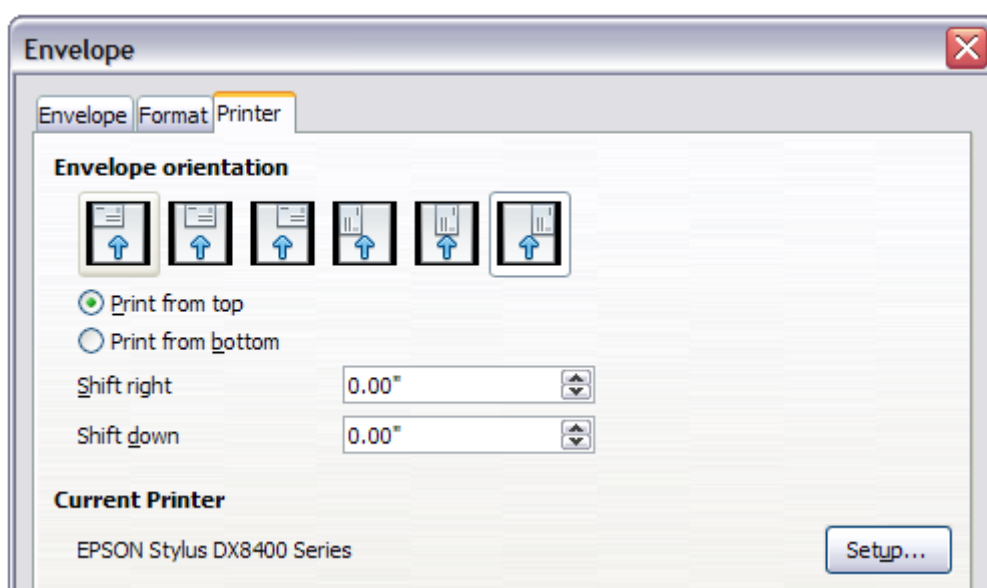


Figure 21: Choosing printer options for an envelope

- 4) Select the **Envelope** tab (Figure 22).
- 5) Choose whether or not to add *Sender* information to the envelope by selecting or deselecting the **Sender** option. If wanted, edit the information in the *Sender* box (Sender is the “from” on the envelope).
- 6) You now have the choice of creating the Addressee fields by dragging and dropping from the data source headings (as described in “Creating a form letter” on page 7, and in particular in Figure 9) or using the facilities of the **Envelope** tab.
- 7) If you prefer dragging and dropping, then click **New Document**, drag your data source headings into the *Addressee* area on your new envelope and skip to step 10), otherwise continue with the next step.
- 8) Verify, add, or edit the information in the *Addressee* box. You can use the right-hand drop-down lists to select the database and table from which you can access the Addressee information, in a similar fashion to that described for “Printing mailing labels”, paragraphs 3, 4 and 5. The similarity of the method with Figure 18 and Figure 19 will be clear.

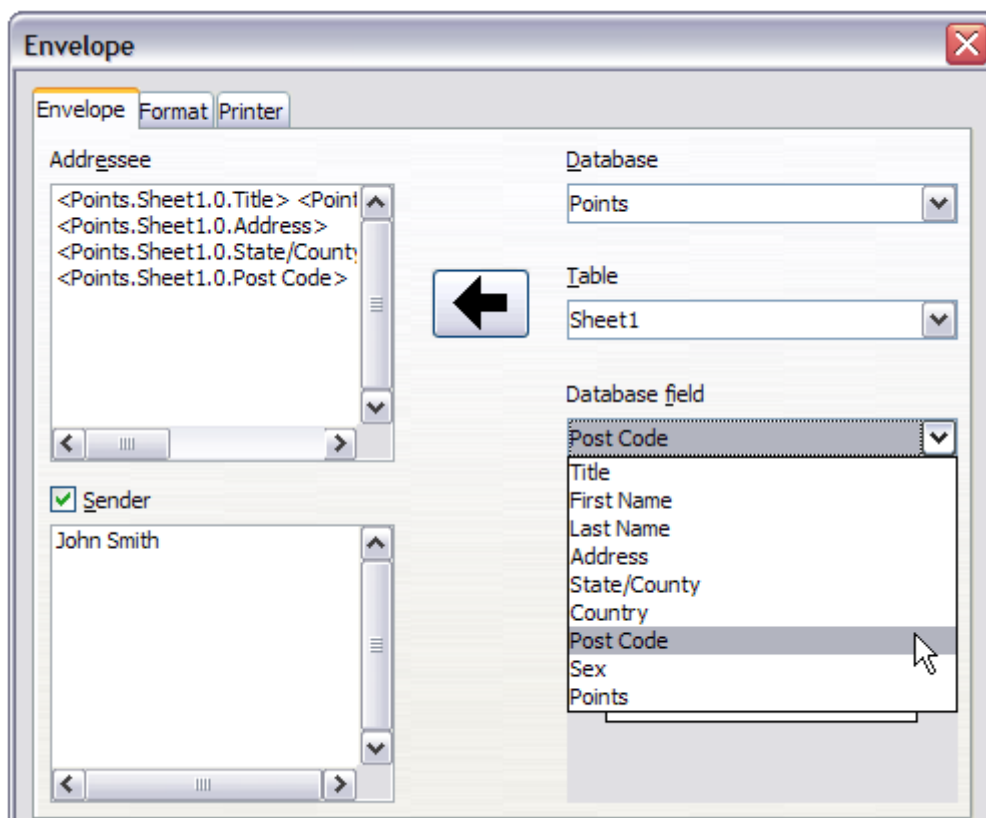


Figure 22: Choosing addressee and sender information for envelopes

- 9) When you have finished formatting, click either the **New Document** or **Insert** button to finish. As might be expected, **New Document** creates only the envelope template in a new document, whereas **Insert** inserts the envelope into your current document as page 1. If you don't want to proceed with this envelope, click **Cancel** or press the *Esc* key. You can also click **Reset** to remove your changes and return to the original settings extant when the dialog opened.

You can now modify the placement of the frames containing the sender and addressee information, or make further changes to the character and paragraph attributes (for example, the font) or add a logo or other graphic to the envelope.

Tip


If you frequently print envelopes from the same database onto the same size envelopes, at this point you may wish to create a template from this setup. See "Creating an envelope template" on page 19.



- 10) Quite often some of the fields in your address data source will be unused, leading to blank lines in your envelope Addressee area. If this is not important, you can skip the next few paragraphs and go straight to "Merging and printing the envelopes" on page 19, otherwise continue as described here.

Tip

The following procedure is very similar to that used for a similar purpose in the section on printing mailing labels. It is reproduced here for ease of reference.

- a) First ensure that the envelope is showing the field contents (data source headings), rather than their underlying field names. If this is not the case, then either press *Ctrl+F9* or choose **View > Field Names** to toggle the view.

- b) Next, ensure that you can see non-printing characters, such as paragraph marks, line breaks and so on. If these are not already visible, choose **View > Nonprinting Characters** from the menu bar, or press *Ctrl+F10*, or click on the **Nonprinting Characters** icon () on the Standard toolbar.

You will now see that address field separation is created by line breaks (), rather than paragraphs (). As the suppression of blank address fields depends on hiding paragraphs, not lines, you need to replace line breaks with paragraphs as follows.

- c) Click at the end of the last data source address field in the first line of the envelope. Press *Delete* to remove the new line character and then press *Return* (or the *Enter* key) to insert a paragraph. Repeat this action for each line of the envelope.

If the line spacing in the Addressee area is not satisfactory, you may wish to correct this before proceeding, by modifying the paragraph style associated with the address. Unless you have changed it, the address uses the Default style.

- d) Click again at the end of the first paragraph to be conditionally suppressed and then choose **Insert > Fields > Other**. Select the **Functions** tab and then click on **Hidden Paragraph** in the *Type* column. Now click in the **Condition** box and enter the details of the condition that defines a blank address field. It has the general form of:

`![Database.Table.Database field]`

where the '!' (NOT) character indicates the negative case and the square brackets indicate the condition.

For example, in our Points database the condition to test if the *Last Name* field is empty would be:

`![Points.Sheet1.Last Name]` as illustrated in Figure 11.

To test for multiple conditions, use the operators *AND* and/or *OR* between the conditional statements, for example:

`![Points.Sheet1.Title]AND![Points.Sheet1.Last Name]`

Click **Insert**, but do not close the dialog until all lines have been amended.

- e) Repeat for each paragraph to be conditionally suppressed, remembering to advance the cursor to the end of the line in question before changing the last element of the condition and Inserting the result.

Merging and printing the envelopes

To merge addresses and print the envelopes:

- 1) Choose **File > Print**. A message box (Figure 12) appears. Click **Yes** to print.
- 2) The Mail Merge dialog (Figure 13) appears. As with form letters and mailing labels, you can choose to print envelopes for one, several or all address records in the database.
- 3) Make your selections and then click **OK** to print direct to the printer. To check the envelopes before printing them, see "Editing merged documents" on page 11 for instructions.

Creating an envelope template

When your envelope layout and fields are complete to your satisfaction, you can save the result as a template.

- 1) Choose **File > Templates > Save As Template**.
- 2) In the Template Manager dialog, select **My Templates** and click on **Save**.
- 3) Enter a name in the text input box and click **OK** to save the template.

Using the Mail Merge Wizard to create a form letter

The manual method of creating a form letter described in “Creating a form letter” on page 7 provides the most control over the result and is therefore recommended. If you prefer to use the Mail Merge wizard, the technique is described below.

Open a new document with **File > New > Text Document** and start the Mail Merge wizard using **Tools > Mail Merge Wizard**. The wizard opens, as shown in Figure 23.

Step 1: Select starting document

The wizard gives various options to select your starting document:

- Use the current document.
- Create a new document.
- Start with an existing document.
- Start from a template.

For the purposes of this description, we assume that you opened a new text document. This will ensure that all the steps in the wizard are fully explored, although with experience you may find it more practical to use a draft you prepared earlier, which will allow for the skipping of some steps.

Select **Use the current document** and click **Next**.

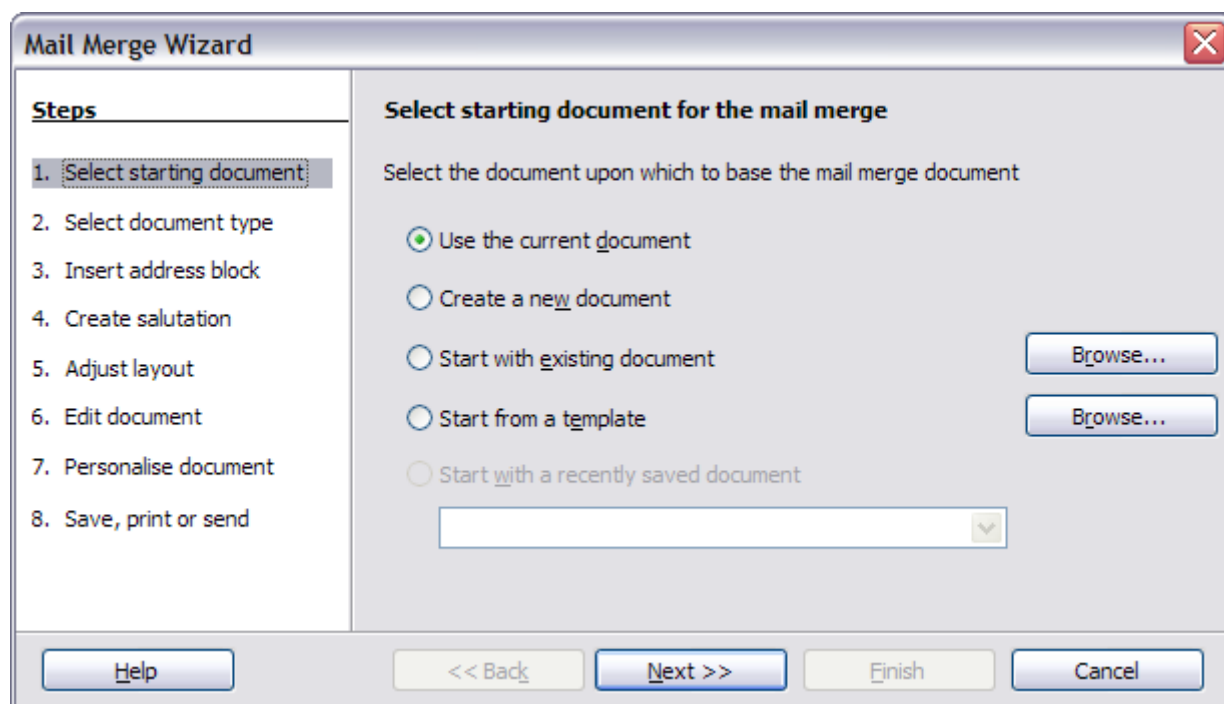


Figure 23: Select starting document

Step 2: Select document type

The wizard can produce letters or, if a Java Mail connection exists, email messages. In this example, we are producing a letter. Select **Letter** and click **Next**.

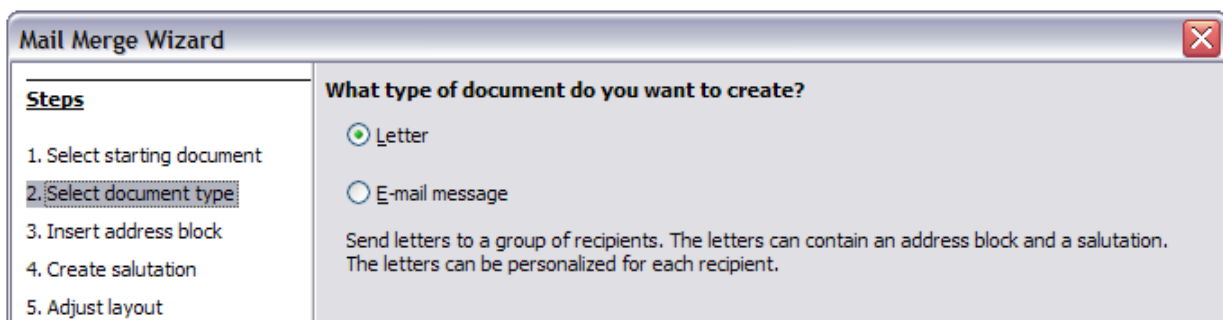


Figure 24: Choose document type

Step 3: Insert address block

This is the most complex step in the wizard. In this step (Figure 25) you will do three things:

- 1) Tell the wizard which data source to use. The data source must be an existing file; in this example it is the "Points" spreadsheet created earlier.
- 2) Select the address block to use in the document. This means choosing which fields appear (for example, whether the country is included) and how they look.
- 3) Make sure that the fields all match correctly. This is very important. For example, the UK English version of the wizard has a field called <Surname>. If your spreadsheet has a column called "Last Name", you need to tell the wizard that <Surname> and "Last Name" are equivalent. This is described in "Matching the fields" on page 23.

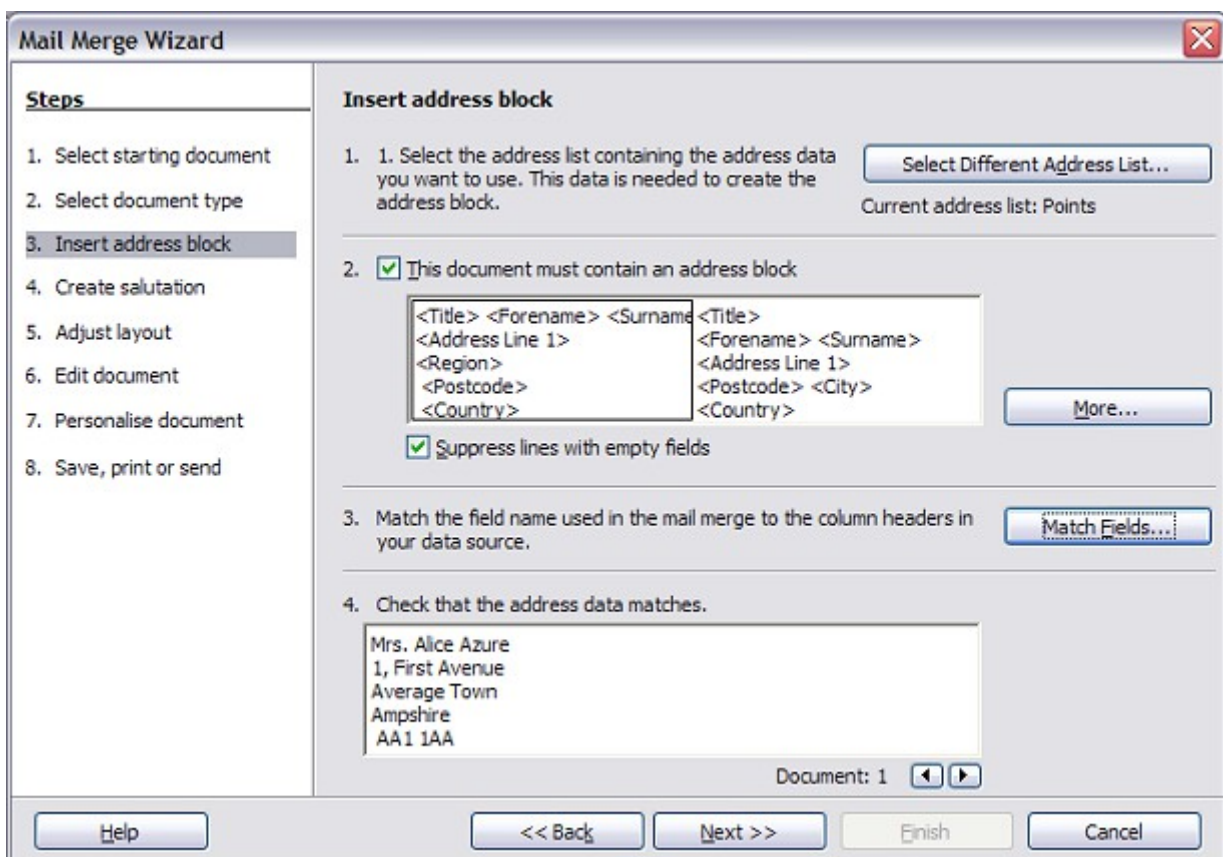


Figure 25: Insert address block

Selecting the data source (address list)

- 1) If the current address list, identified beneath the **Select Different Address List** button in section 1, is not the one you wish to use, click the button to open the Select Address List dialog (Figure 26) for choosing a data source.
- 2) If you have not already created the address list, you may click **Create** to do so now. This step will allow you to create a CSV (Comma Separated Values) file with a new list of address records.
If you have an address list that is not registered in LibreOffice, but which you wish to use, click **Add** and select the file from the location in which it is saved.
In each of the above cases a new data source (ODB file) will be created and registered.
- 3) Select the address list and click **OK** to return to step 3 of the wizard. We retain "Points" as our address book for this example. The wizard can also exclude certain records; click **Filter** to choose them.

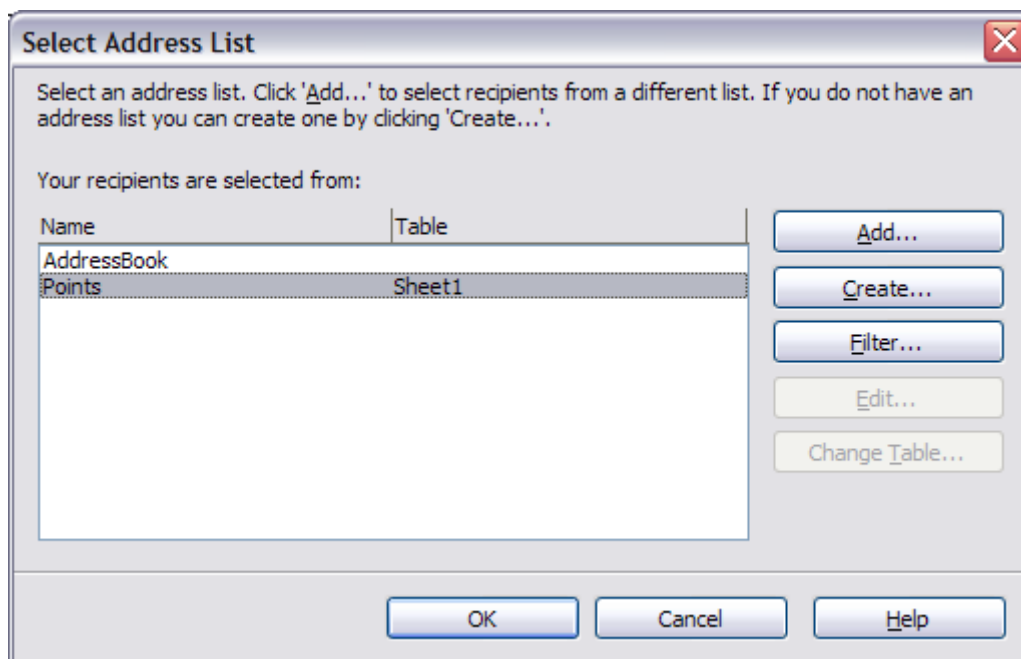


Figure 26: Select address list dialog

Selecting the address block

- 1) In section 2 (shown in Figure 25), select the address block to appear on the letter, define its appearance, and choose the fields it contains. The main page gives two choices. Click **More** to open the Select Address Block dialog for more choices.
- 2) The Select Address Block dialog (Figure 27) displays the original two blocks plus other choices for the format of the address block (you may need to scroll down to see all of the choices). You can also optionally include or exclude the country (for example, only include the country if it is not England) in the *Address block settings*. The formats provided are relatively common, but they might not exactly match your preference. If this is the case, select the address block that is closest to what you want and click **Edit**, which opens the Edit Address Block dialog.

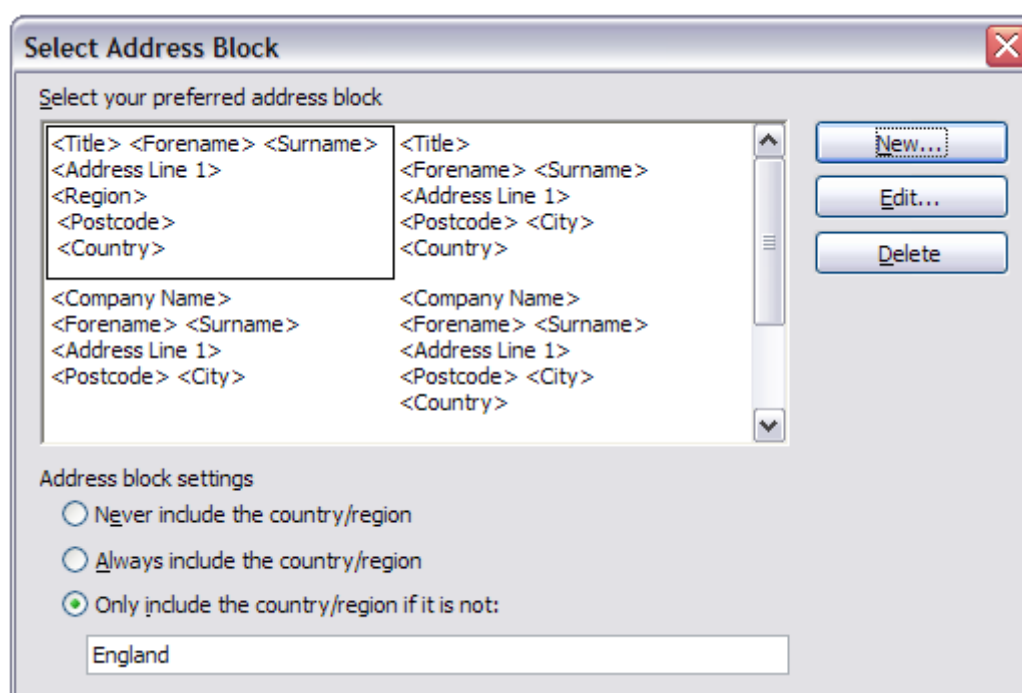


Figure 27: Select address block

- 3) In the Edit Address Block dialog, you can add or delete address elements using the arrow buttons on the left. To move elements around, use the arrow buttons on the right. For example, to add an extra space between forename and surname in Figure 28, click <Surname> and then click the **right arrow** button.

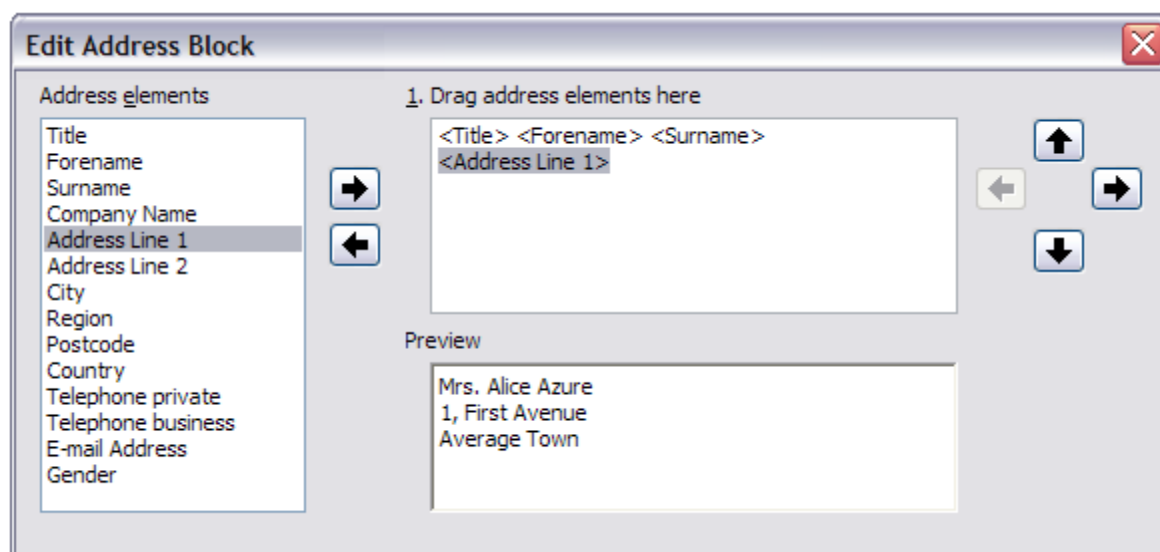


Figure 28: Edit address block

Matching the fields

Finally, it is time to match the wizard's fields with the spreadsheet fields, so that items like <Surname> and "Last Name" match correctly.

- 1) Look at section 3 of the wizard (shown in Figure 25 on page 21). The box at the bottom displays one record at a time, using the address block format you specified. Use the right and left arrow buttons below that address box to step through the addresses, checking that they display correctly. Do not assume that all the records display correctly, just because one or two do. Check them all if you can, or at least a good proportion.

- 2) If the addresses do not display correctly (and they probably will not right away), click **Match Fields**.
- 3) The Match Fields dialog (Figure 29) has three columns:
 - *Address Elements* are the terms the wizard uses for each field, such as <Forename> and <Surname>.
 - Use the *Matches to field* column to select, for each address element, the field from your data source that matches it.
 - The *Preview* column shows what will be shown for this field from the selected address block, so you can double-check that the match is correct.
- 4) When you have matched all the fields, click **OK** to return to step 3 of the wizard. Now, when you use the arrow buttons to look at all the addresses, they should all look correct. If not, go back and change anything you're not happy with, before clicking **Next** to move to step 4.

Note that you will not be able to continue until you have correctly matched all the fields in your chosen address block. If you see <not yet matched> in a field position it indicates that the field in question is not correctly matched.

The Match Fields dialog box is titled "Match Fields" and contains the instruction "Assign the fields from your data source to match the address elements." It features a table with three columns: "Address elements", "Matches to field:", and "Preview".

Address elements	Matches to field:	Preview
<Title>	Title	Mrs.
<Forename>	First Name	Alice
<Surname>	Last Name	Azure
<Company Name>	Last Name	
<Address Line 1>	Address	1, First Avenue Average ...
<Address Line 2>	State/County	
	Country	
	Post Code	
	< none >	

Below the table is an "Address block preview" section showing the resulting address: "Mrs. Alice Azure", "1, First Avenue", "Average Town". At the bottom are buttons for "OK", "Cancel", and "Help".

Figure 29: Match fields dialog

- 5) Notice the option for **Suppress lines with empty fields** in section 2 of Figure 25. Using the Wizard, you do not have to create your own conditional suppression fields.

Step 4: Create salutation

It is possible to create just about any salutation you want in this step.

By selecting the **This document should contain a salutation** option, the *General salutation* list box is enabled. Some general texts are available in the list box, or you can enter your own text, such as *Hello club member*. A preview pane displays your choice.

By also selecting the **Insert personalized salutation** option, further salutation constructs become available.

You can, for example, use a different greeting for men and women. To do this, Writer must have some way of knowing whether a person is male or female. In our spreadsheet (see Figure 1) we had a column called Sex. In the section **Address list field indicating a female recipient**, set the **Field name** to Sex and the **Field value** to F. The Male salutation is then printed for all men and the Female salutation for all women.

Note

You do not need to tell LibreOffice who is a male, because it assumes that all non-female records are males.

If you do not have such a column in your spreadsheet, then you can leave the **Field name** and **Field value** boxes empty and use the customized content of the **Male** list box for the salutation.

The screenshot shows the 'Mail Merge Wizard' dialog box with the 'Create a salutation' step selected. On the left, a 'Steps' list shows: 1. Select starting document, 2. Select document type, 3. Insert address block, 4. Create salutation (highlighted), 5. Adjust layout, 6. Edit document, 7. Personalise document, 8. Save, print or send. The main area is titled 'Create a salutation' and contains several options and input fields. Two checkboxes are checked: 'This document should contain a salutation' and 'Insert personalised salutation'. Below these are two rows for 'Female' and 'Male' salutations, each with a text box containing 'Dear Mrs. <Surname>,' and 'Dear Mr. <Surname>,' respectively, and a 'New...' button. Further down is the 'Address list field indicating a female recipient' section with 'Field name' set to 'Sex' and 'Field value' set to 'F'. Below that is a 'General salutation' dropdown set to 'To whom it may concern,'. At the bottom is a 'Preview' box showing 'Dear Mrs. Azure,' and 'Dear Mr. Azure,' with a 'Match fields...' button. At the very bottom right, it says 'Document: 1' with left and right arrow buttons.

Figure 30: Create a salutation

As an example:

- 1) Click the New button alongside the Male list box. The *Custom Salutation (Male Recipients)* dialog opens (see Figure 31).
- 2) Select **Salutation** in the *Salutation elements* listings.
- 3) Click the **Add to salutation** arrow button to add it to box 1.
- 4) Open the list box choices for box 2, select an appropriate greeting or type your own text into the list box. Edit it as needed.
- 5) Select and move across **Title** from the *Salutation elements* listings into box 1.
- 6) Add a space and then move **Last Name** across.
- 7) Finally, move **Punctuation Mark** across and select the comma from the choices in box 2.
- 8) The construct is shown in the **Preview** box.
- 9) Carry out any final editing. Click **OK**.

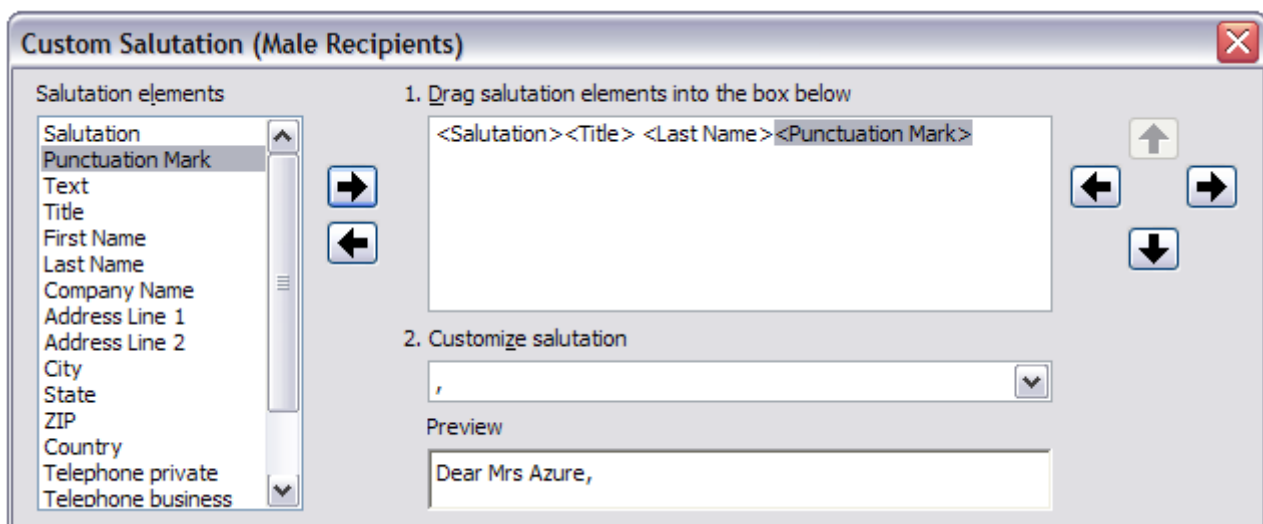


Figure 31: Customizing the salutation

You can see that the <Title> field takes care of the gender aspect of the salutation. Using this method allows you to use gender neutral titles such as Doctor (Dr) and Reverend (Rev), or titles such as Ms or Master.

Step 5: Adjust layout

In step 5, you can adjust the position of the address block and salutation on the page. You can place the address block anywhere on the page. The salutation is always on the left, but you can move it up and down the page. Use the buttons shown in Figure 32 to move the elements.

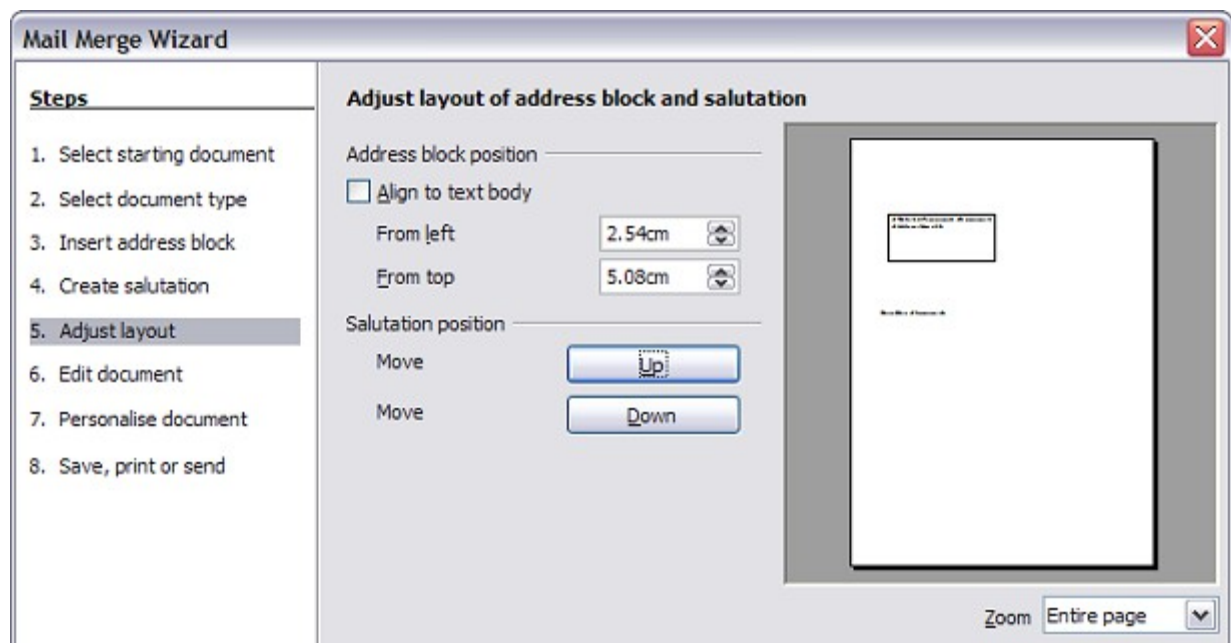


Figure 32: Adjust layout

Step 6: Edit document and insert extra fields

In step 6 you have another opportunity to exclude particular recipients from the mail merge, as shown in Figure 33.

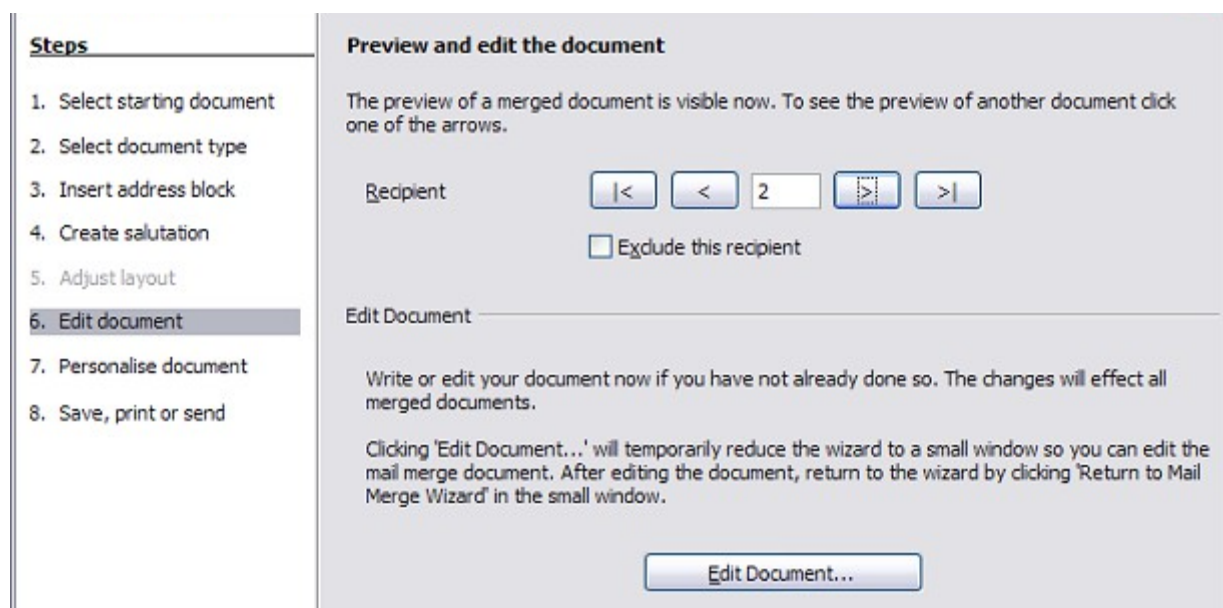


Figure 33: Edit document

You can also edit the body of the document. If you started with a blank document, you can write the whole letter in this step. Click **Edit Document** to shrink the wizard to a small window (Figure 34) so you can easily edit the letter.

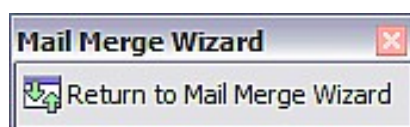


Figure 34: Minimized mail merge wizard

You need to perform another important task in this step. The wizard only inserts information from the name and address fields, but you may wish to add additional data. In our example, we want to tell each person how many points they had accumulated during the year; that information is in the database. To do this:

- 1) Click **Edit Document** in step 6 of the wizard.
- 2) Choose **Insert > Fields > Other**. The Fields dialog opens.
- 3) Click the *Database* tab.
- 4) On the left hand side, select **Mail merge fields**.
- 5) Under *Database selection* find your data source (in this example, it is *Points*). Expand it to see the fields.
- 6) Click the field you want to insert (Points), then click **Insert** to insert the field.
You can insert any number of fields any number of times into your mail merge document.
- 7) Click **Close** when you are done.

Note

The **Database selection** lists the data source you selected in step 3. All the information you need for the letter must be contained in that data source.

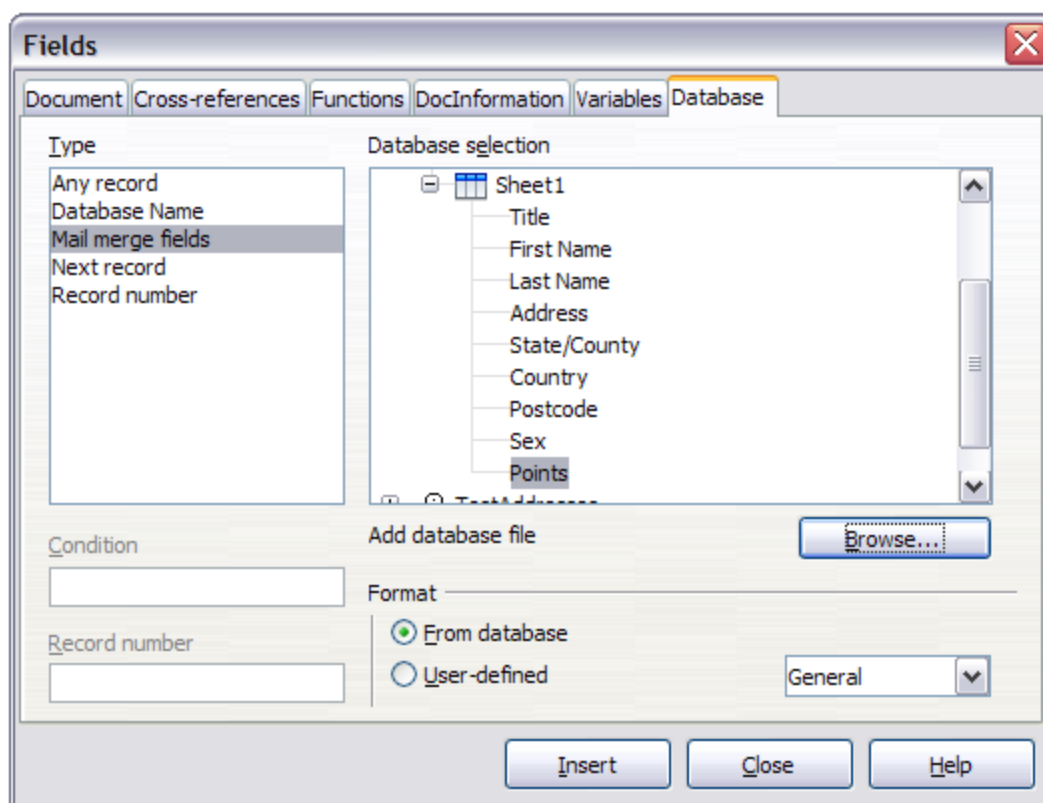


Figure 35: Insert mail merge fields dialog

Step 7: Personalize documents

This step creates all your letters, one per recipient.

Clicking the **Edit individual Document** button here is similar to step 6. The difference is that you now edit a long file containing all of the letters, so you can make changes to a particular letter to one person. In this step of the Mail Merge wizard, click **Find** to open a dialog that allows searches within the document, perhaps for an individual addressee.

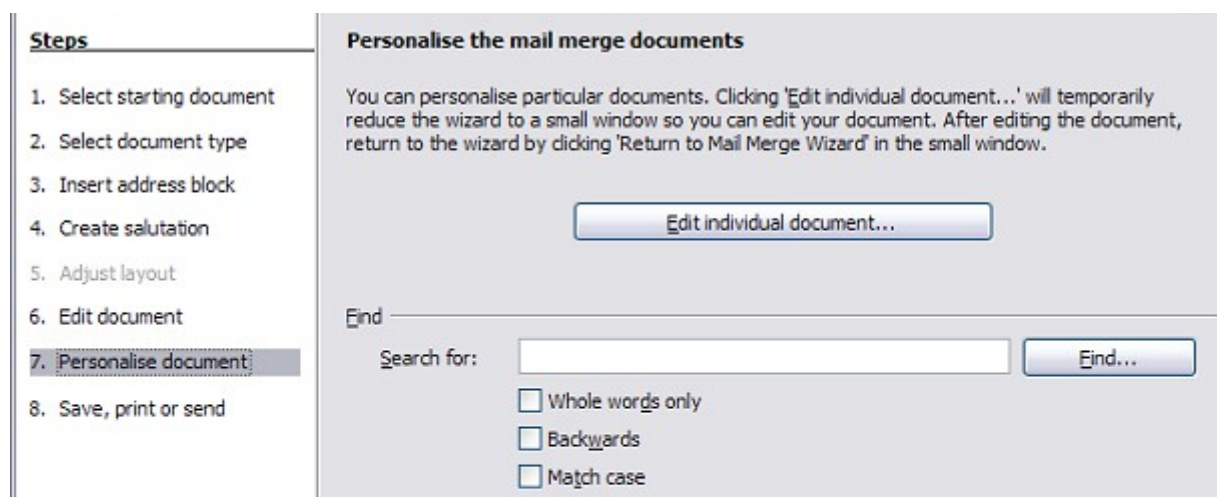


Figure 36: Personalize document

As with step 6, when editing the document, the wizard shrinks to a small window (Figure 34). Click on this window to expand the wizard to its full size.

Step 8: Save, print or send

You have now completed the mail merge process. The last step is to do something with it. In step 8, you can save the original sample letter, save the merged document, print the letters right away or, if you created email messages, send them.

You probably want to save the starting (prototype) document and the merged document. To do this, select **Save starting document** to reveal the **Save starting document** section containing the **Save starting document** button. This button will be active only if the document has not already been saved. Clicking on this button brings up the standard Save as dialog. Once you have named and saved the document you return to the Step 8 dialog as shown in Figure 38.

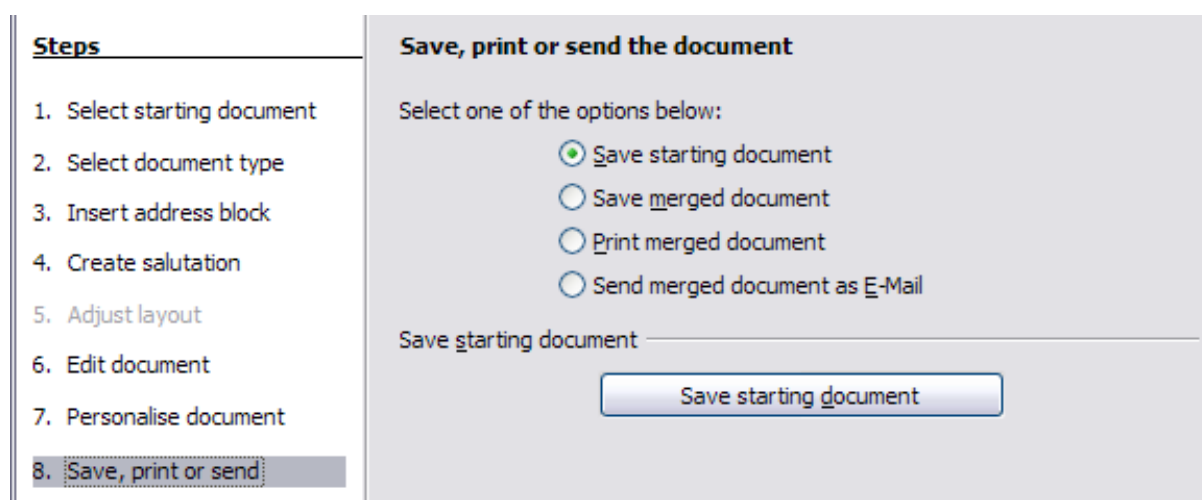


Figure 37: Step 8: Save, print or send

The merged document can now be saved by selecting **Save merged document**. This will reveal the **Save merged document settings** section, from which you can select to save either as one large file containing all the individual, generated letters or as a separate file for each letter.

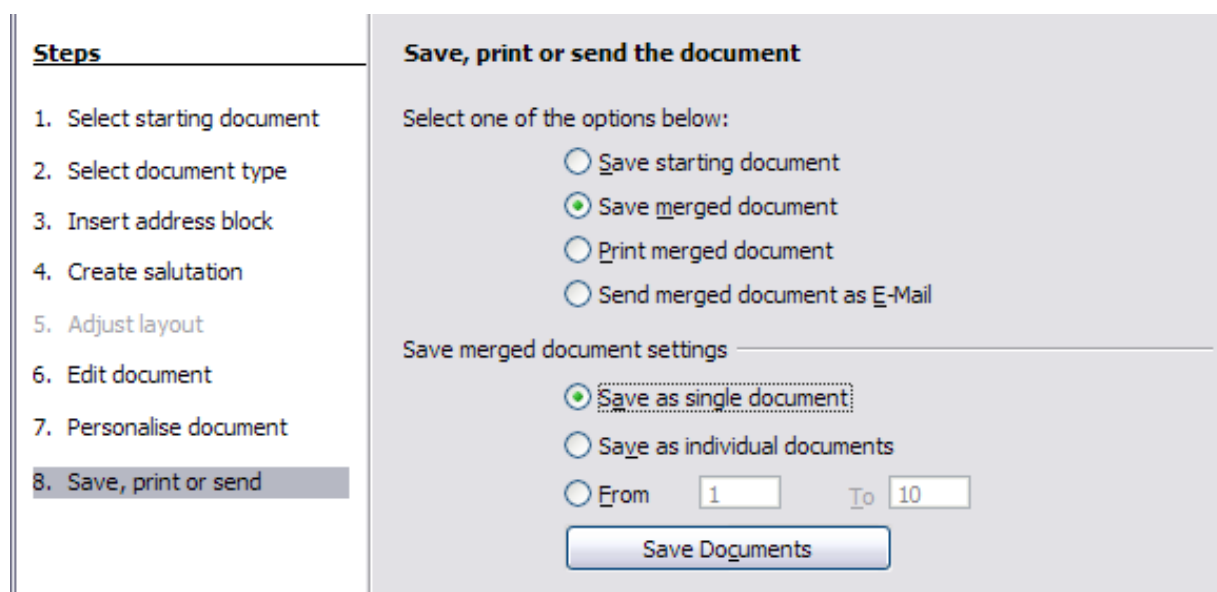


Figure 38: Saving a merged document

When you have saved the merged document, you can print the final letters now or later; and you can still manually check and edit the letters if necessary. If you elect to print at this stage, the dialog shown in Figure 39 appears; it should be self-explanatory.

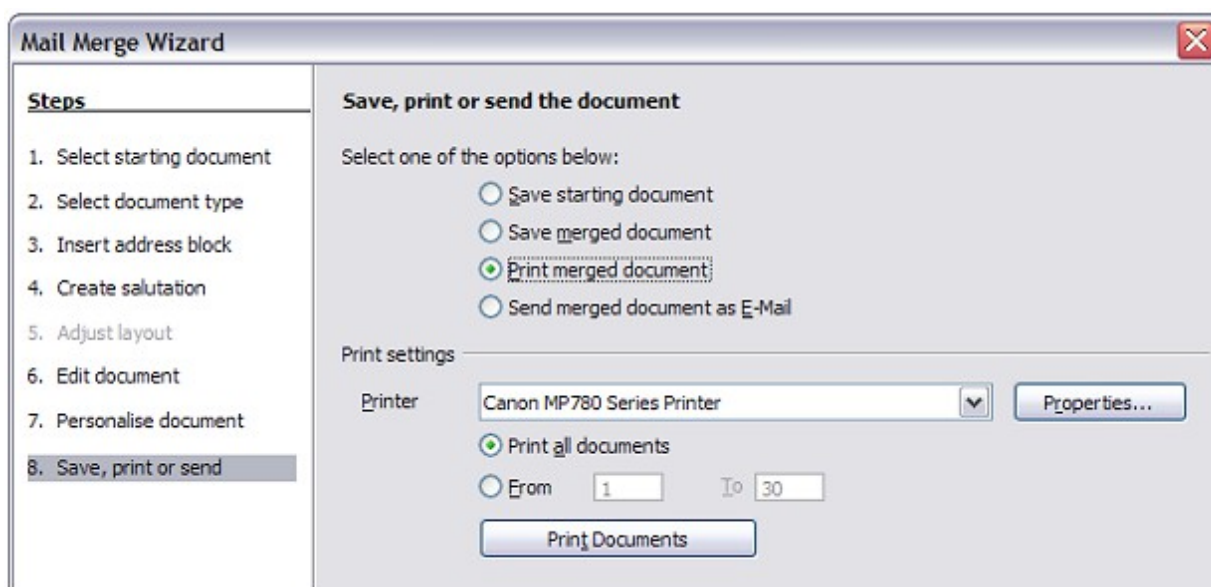


Figure 39: Printing the merged document