



LibreOffice
The Document Foundation

Getting Started Guide

Chapter 14

Customizing LibreOffice

Copyright

This document is Copyright © 2005–2010 by its contributors as listed below. You may distribute it and/or modify it under the terms of either the GNU General Public License (<http://www.gnu.org/licenses/gpl.html>), version 3 or later, or the Creative Commons Attribution License (<http://creativecommons.org/licenses/by/3.0/>), version 3.0 or later.

All trademarks within this guide belong to their legitimate owners.

Contributors

Ron Faile Jr.

Feedback

Please direct any comments or suggestions about this document to:

documentation@libreoffice.org

Publication date and software version

Published 10 December 2010. Based on LibreOffice 3.3.

Note for Mac users

Some keystrokes and menu items are different on a Mac from those used in Windows and Linux. The table below gives some common substitutions for the instructions in this chapter. For a more detailed list, see the application Help.

<i>Windows/Linux</i>	<i>Mac equivalent</i>	<i>Effect</i>
Tools → Options menu selection	LibreOffice → Preferences	Access setup options
<i>Right-click</i>	<i>Control+click</i>	Open context menu
<i>Ctrl (Control)</i>	⌘ (<i>Command</i>)	Used with other keys
<i>F5</i>	<i>Shift+⌘+F5</i>	Open the Navigator
<i>F11</i>	<i>⌘+T</i>	Open Styles & Formatting window

Contents

Copyright.....	2
Note for Mac users.....	2
Introduction.....	4
Customizing menu content.....	4
Creating a new menu.....	5
Modifying existing menus.....	6
Adding a command to a menu.....	6
Modifying menu entries.....	6
Customizing toolbars.....	7
Creating a new toolbar.....	8
Adding a command to a toolbar.....	8
Choosing icons for toolbar commands.....	9
Example: Adding a Fax icon to a toolbar.....	9
Assigning shortcut keys.....	11
Example: Assigning styles to shortcut keys.....	11
Saving changes to a file.....	12
Loading a saved keyboard configuration.....	13
Resetting the shortcut keys.....	13
Assigning macros to events.....	13
Adding functionality with extensions.....	13
Installing extensions.....	13
Some popular extensions.....	14

Introduction

This chapter describes some common customizations that you may wish to do.

You can customize menus, toolbars, and keyboard shortcuts in LibreOffice, add new menus and toolbars, and assign macros to events. However, you cannot customize context (right-click) menus.

Other customizations are made easy by extensions that you can install from the LibreOffice website or from other providers.

Note

Customizations to menus and toolbars can be saved in a template. To do so, first save them in a document and then save the document as a template as described in Chapter 3 (Styles and Templates).

Customizing menu content

In addition to changing the menu font (described in Chapter 2), you can add and rearrange items on the menu bar, add items to menus, and make other changes.

To customize menus:

- 1) Choose **Tools** → **Customize**.
- 2) On the **Customize** dialog, pick the **Menus** page.

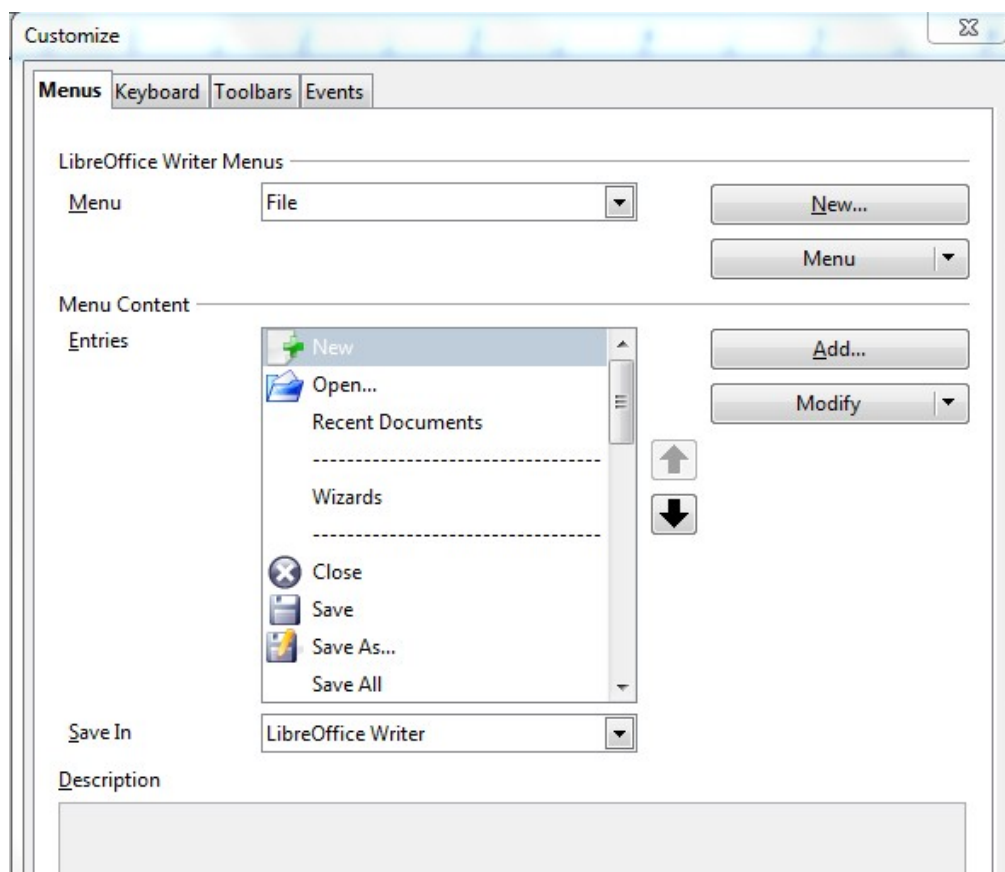


Figure 1. The Menus page of the Customize dialog

- 3) In the Save In drop-down list, choose whether to save this changed menu for the application (for example, LibreOffice Writer) or for a selected document (for example, MyDoc.odt).
- 4) In the section **LibreOffice [name of the program (example: Writer)] Menus**, select from the **Menu** drop-down list the menu that you want to customize. The list includes all the main menus as well as submenus (menus that are contained under another menu). For example, in addition to *File*, *Edit*, *View*, and so on, there is *File | Send* and *File | Templates*. The commands available for the selected menu are shown in the central part of the dialog.
- 5) To customize the selected menu, click on the **Menu** or **Modify** buttons. You can also add commands to a menu by clicking on the **Add** button. These actions are described in the following sections. Use the up and down arrows next to the Entries list to move the selected menu item to a different position.
- 6) When you have finished making all your changes, click **OK** (not shown in illustration) to save them.

Creating a new menu

In the Customize dialog, click **New** to display the dialog shown in Figure 2.

- 1) Type a name for your new menu in the **Menu name** box.
- 2) Use the up and down arrow buttons to move the new menu into the required position on the menu bar.
- 3) Click **OK** to save.

The new menu now appears on the list of menus in the Customize dialog. (It will appear on the menu bar itself after you save your customizations.)

After creating a new menu, you need to add some commands to it, as described in “Adding a command to a menu” on page 6.

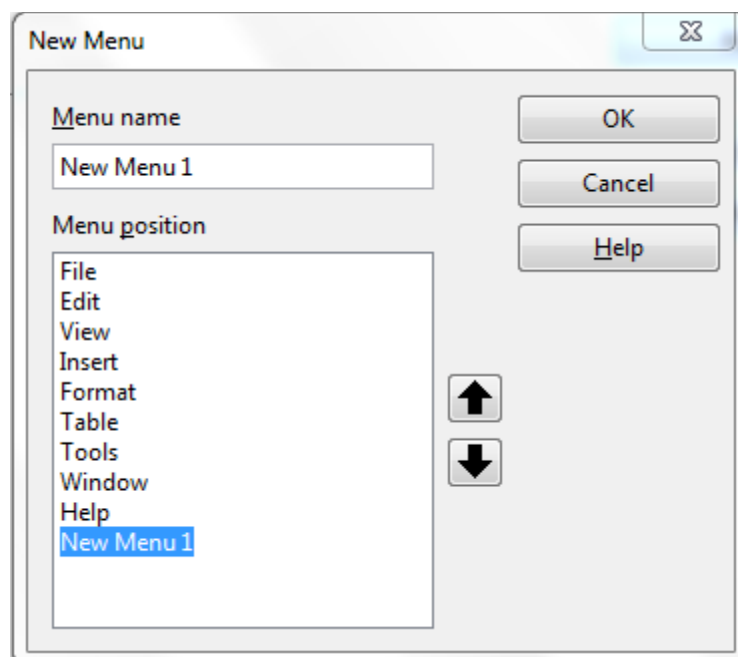


Figure 2: Adding a new menu

Modifying existing menus

To modify an existing menu, select it in the Menu list and click the **Menu** button to drop down a list of modifications: **Move**, **Rename**, **Delete**. Not all of these modifications can be applied to all the entries in the Menu list. For example, **Rename** and **Delete** are not available for the menus supplied by LibreOffice.

To move a menu (such as *File*), choose **Menu** → **Move**. A dialog similar to the one shown in Figure 2 (but without the **Menu name** box) opens. Use the up and down arrow buttons to move the menu into the required position.

To move submenus (such as *File | Send*), select the main menu (File) in the Menu list and then, in the Menu Content section of the dialog, select the submenu (Send) in the Entries list and use the arrow keys to move it up or down in the sequence.

In addition to renaming, you can specify a keyboard shortcut that allows you to select a menu command when you press *Alt*+ an underlined letter in a menu command.

- 1) Select a menu entry.
- 2) Click the **Modify** button and select **Rename**.
- 3) Add a tilde (~) in front of the letter that you want to use as an accelerator. For example, to select the Save All command by pressing *Alt*+*V* (after opening the File menu using *Alt*+*F*), enter *Sa~ve All*.

Caution



Be careful when using these shortcuts. In the example above, if the File menu is not already open, then pressing *Alt*+*V* opens the View menu; if some other menu is open, *Alt*+*V* might activate some other command.

Adding a command to a menu

You can add commands to the supplied menus and to menus you have created. On the Customize dialog, select the menu in the Menu list and click the **Add** button in the Menu Content section of the dialog.

On the Add Commands dialog (Figure 3), select a category and then the command, and click **Add**. The dialog remains open, so you can select several commands. When you have finished adding commands, click **Close**. Back on the Customize dialog, you can use the up and down arrow buttons to arrange the commands in your preferred sequence.

Modifying menu entries

In addition to changing the sequence of entries on a menu or submenu, you can add submenus, rename or delete the entries, and add group separators.

To begin, select the menu or submenu in the Menu list near the top of the Customize page, then select the entry in the Entries list under Menu Content. Click the **Modify** button and choose the required action from the drop-down list of actions.

Most of the actions should be self-explanatory. **Begin a group** adds a separator line after the highlighted entry.

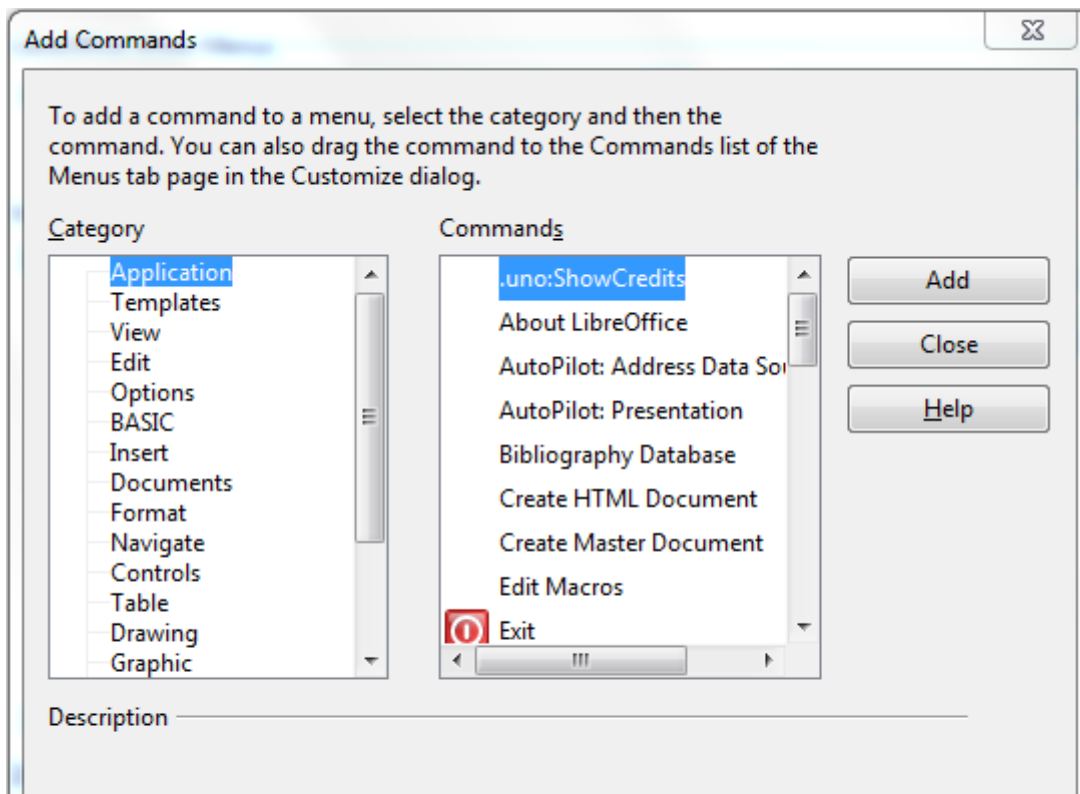


Figure 3: Adding a command to a menu

Customizing toolbars

You can customize toolbars in several ways, including choosing which icons are visible and locking the position of a docked toolbar, as described in Chapter 1 (Introducing LibreOffice). This section describes how to create new toolbars and add other icons (commands) to the list of those available on a toolbar.

To get to the toolbar customization dialog, do any of the following:

- On the toolbar, click the arrow at the end of the toolbar and choose **Customize Toolbar**.
- Choose **View** → **Toolbars** → **Customize** from the menu bar.
- Choose **Tools** → **Customize** from the menu bar and pick the **Toolbars** page (Figure 4).

To customize toolbars:

- 1) In the Save In drop-down list, choose whether to save this changed toolbar for the application (for example, Writer) or for a selected document.
- 2) In the section **LibreOffice <name of the program (example: Writer)** → **Toolbars**, select from the **Toolbar** drop-down list the toolbar that you want to customize.
- 3) You can create a new toolbar by clicking on the **New** button, or customize existing toolbars by clicking on the **Toolbar** or **Modify** buttons, and add commands to a toolbar by clicking on the **Add** button. These actions are described below.
- 4) When you have finished making all your changes, click **OK** to save them.

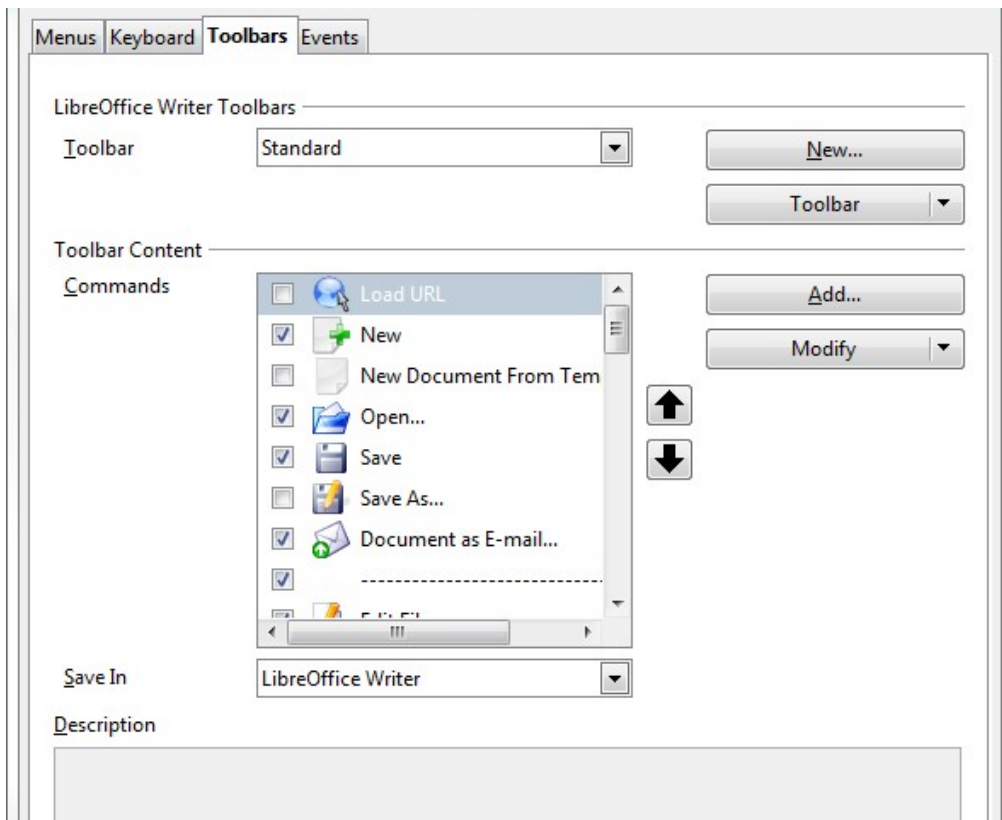
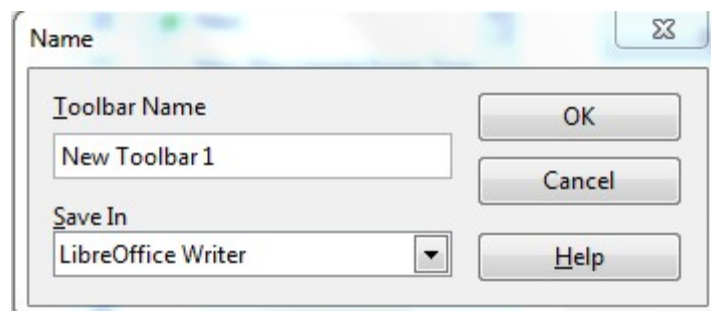


Figure 4. The Toolbars page of the Customize dialog

Creating a new toolbar

To create a new toolbar:

- 1) Choose **Tools** → **Customize** → **Toolbars** from the menu bar.
- 2) Click **New**. On the Name dialog, type the new toolbar's name and choose from the Save In drop-down list where to save this changed menu: for the application (for example, Writer) or for a selected document. Click **OK**.



The new toolbar now appears on the list of toolbars in the Customize dialog. After creating a new toolbar, you need to add some commands to it, as described below.

Adding a command to a toolbar

If the list of available buttons for a toolbar does not include all the commands you want on that toolbar, you can add commands. When you create a new toolbar, you need to add commands to it.

- 1) On the Toolbars page of the Customize dialog, select the toolbar in the Toolbar list and click the **Add** button in the Toolbar Content section of the dialog.

- 2) The Add Commands dialog is the same as for adding commands to menus (Figure 3). Select a category and then the command, and click **Add**. The dialog remains open, so you can select several commands. When you have finished adding commands, click **Close**. If you insert an item which does not have an associated icon, the toolbar will display the full name of the item: the next section describes how to choose an icon for a toolbar command.
- 3) Back on the Customize dialog, you can use the up and down arrow buttons to arrange the commands in your preferred sequence.
- 4) When you are done making changes, click **OK** to save.

Choosing icons for toolbar commands

Toolbar buttons usually have icons, not words, on them, but not all of the commands have associated icons.

To choose an icon for a command, select the command and click **Modify** → **Change icon**. On the Change Icon dialog, you can scroll through the available icons, select one, and click **OK** to assign it to the command.

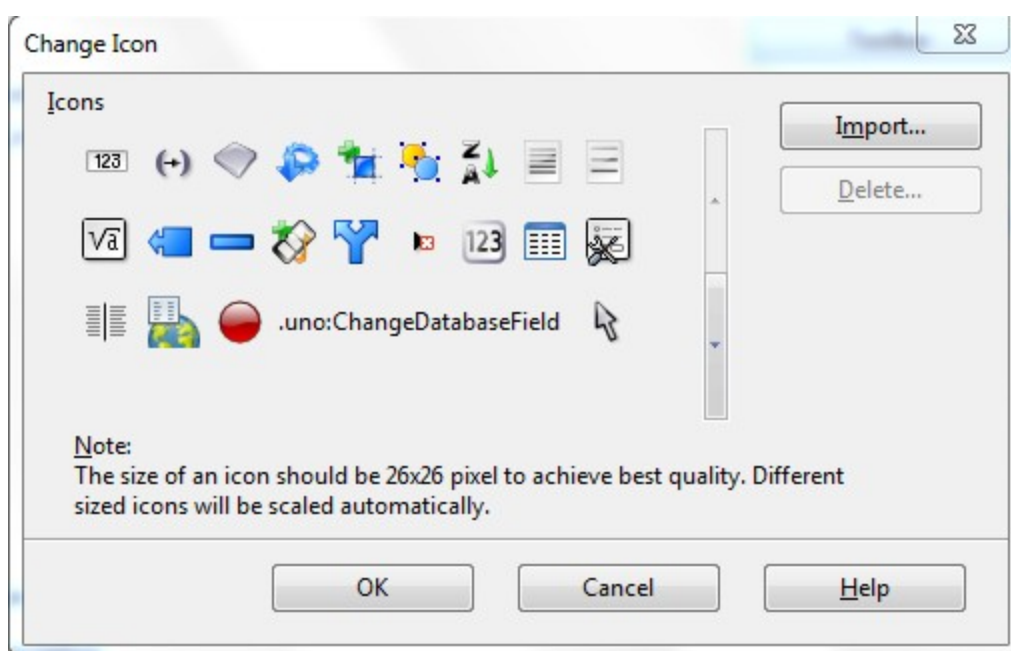


Figure 5: Change Icon dialog

To use a custom icon, create it in a graphics program and import it into LibreOffice by clicking the **Import** button on the Change Icon dialog. Custom icons should be 26 x 26 pixels in size to achieve the best quality and cannot contain more than 256 colors.

Example: Adding a Fax icon to a toolbar

You can customize LibreOffice so that a single click on an icon automatically sends the current document as a fax.

- 1) Be sure the fax driver is installed. Consult the documentation for your fax modem for more information.
- 2) Choose **Tools** → **Options** → **LibreOffice Writer** → **Print**. The dialog shown in Figure 6 opens.
- 3) Select the fax driver from the **Fax** list and click **OK**.

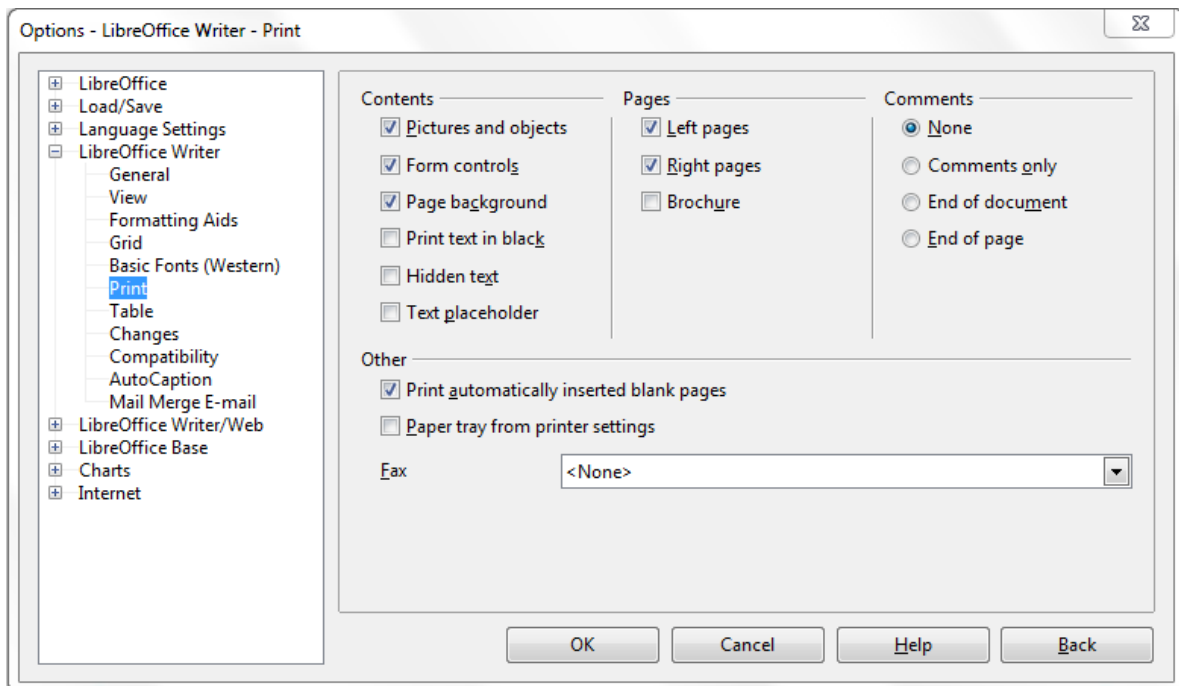


Figure 6: Setting up LibreOffice for sending faxes

- 4) Click the arrow icon at the end of the Standard toolbar. In the drop-down menu, choose **Customize Toolbar**. The Toolbars page of the Customize dialog appears (Figure 4). Click **Add**.
- 5) On the Add Commands dialog (Figure 7), select *Documents* in the Category list, then select *Send Default Fax* in the Commands list. Click **Add**. Now you can see the new icon in the Commands list.
- 6) In the Commands list, click the up or down arrow button to position the new icon where you want it. Click **OK** and then click **Close**.

Your toolbar now has a new icon to send the current document as a fax.

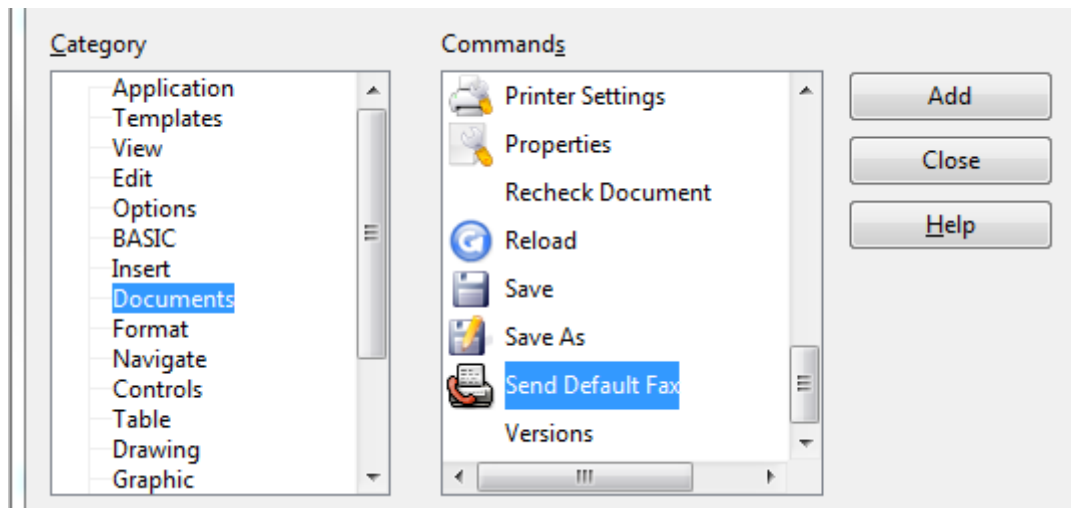


Figure 7: Adding a Send Fax command to a toolbar

Assigning shortcut keys

In addition to using the built-in keyboard shortcuts (listed in Appendix A), you can define your own. You can assign shortcuts to standard LibreOffice functions or your own macros and save them for use with the entire LibreOffice suite.

Caution



Be careful when reassigning your operating system's or LibreOffice's predefined shortcut keys. Many key assignments are universally understood shortcuts, such as *F1* for Help, and are always expected to provide certain results. Although you can easily reset the shortcut key assignments to the LibreOffice defaults, changing some common shortcut keys can cause confusion, frustration and possible data loss or corruption, especially if other users share your computer.

To adapt shortcut keys to your needs, use the Customize dialog, as described below.

- 1) Select **Tools** → **Customize** → **Keyboard**. The Customize dialog opens.
- 2) To have the shortcut key assignment available in all components of LibreOffice select the **LibreOffice** radio button.
- 3) Next select the required function from the *Category* and *Function* lists.
- 4) Now select the desired shortcut keys in the *Shortcut keys* list and click the **Modify** button at the upper right.
- 5) Click **OK** to accept the change. Now the chosen shortcut keys will execute the function chosen in step 3 above whenever they are pressed.

Note

All existing shortcut keys for the currently selected *Function* are listed in the *Keys* selection box. If the *Keys* list is empty, it indicates that the chosen key combination is free for use. If it were not, and you wanted to reassign a shortcut key combination that is already in use, you must first delete the existing key.

Shortcut keys that are greyed-out in the listing on the Customize dialog, such as *F1* and *F10*, are not available for reassignment.

Example: Assigning styles to shortcut keys

You can configure shortcut keys to quickly assign styles in your document. Some shortcuts are predefined, such as *Ctrl+0* for the *Text body* paragraph style, *Ctrl+1* for the *Heading 1* style, and *Ctrl+2* for *Heading 2*. You can modify these shortcuts and create your own.

- 1) Click **Tools** → **Customize** → **Keyboard**. The Keyboard page of the Customize dialog (Figure 8) opens.
- 2) To have the shortcut key assignment available only with one component (for example, Writer), select that component's name in the upper right corner of the page; otherwise select **LibreOffice** button to make it available to every component.
- 3) Choose the shortcut keys you want to assign a style to. In this example, we have chosen *Ctrl+9*.
- 4) In the *Functions* section at the bottom of the dialog, scroll down in the *Category* list to *Styles*. Click the expansion symbol (usually a + sign or triangle) to expand the list of styles.

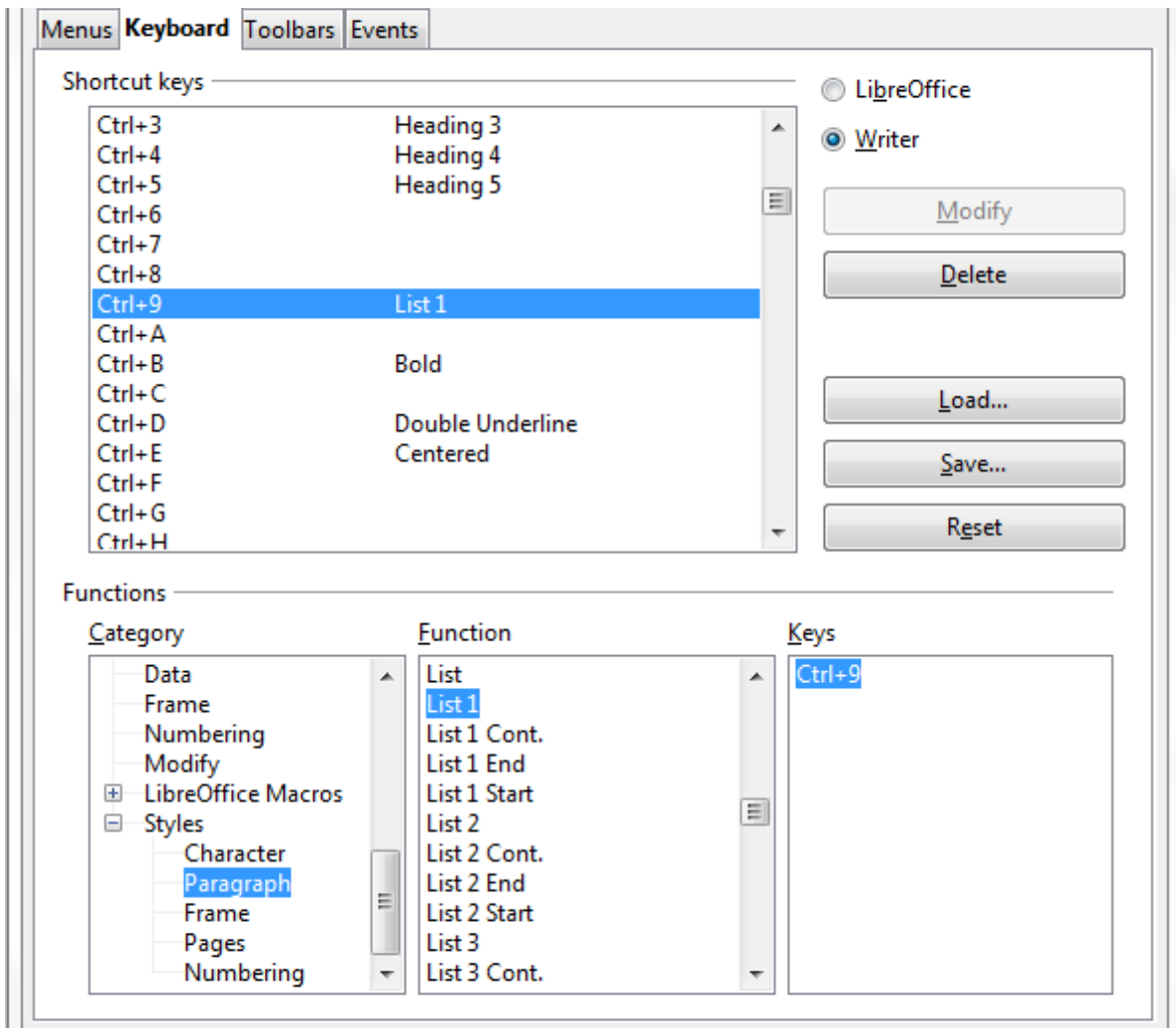


Figure 8. Defining keyboard shortcuts for applying styles

- 5) Choose the category of style. (This example uses a paragraph style, but you can also choose character styles and others.) The *Function* list will display the names of the available styles for the selected category. The example shows some of LibreOffice's predefined styles.
- 6) To assign *Ctrl+9* to be the shortcut key combination for the *List 1* style, select *List 1* in the *Function* list, and then click **Modify**. *Ctrl+9* now appears in the *Keys* list on the right, and *List 1* appears next to *Ctrl+9* in the *Shortcut keys* box at the top.
- 7) Make any other required changes, and then click **OK** to save these settings and close the dialog.

Saving changes to a file

Changes to the shortcut key assignments can be saved in a keyboard configuration file for use at a later time, thus permitting you to create and apply different configurations as the need arises. To save keyboard shortcuts to a file:

- 1) After making your keyboard shortcut assignments, click the **Save** button at the right of the *Customize* dialog (Figure 8).
- 2) In the *Save Keyboard Configuration* dialog, select *All files* from the **Save as Type** list.
- 3) Next enter a name for the keyboard configuration file in the **File name** box, or select an existing file from the list. If you need to, browse to find a file from another location.

- 4) Click **Save**. A confirmation dialog appears if you are about to overwrite an existing file, otherwise there will be no feedback and the file will be saved.

Loading a saved keyboard configuration

To load a saved keyboard configuration file and replace your existing configuration, click the **Load** button at the right of the Customize dialog, and then select the configuration file from the Load Keyboard Configuration dialog.

Resetting the shortcut keys

To reset all of the keyboard shortcuts to their default values, click the **Reset** button near the bottom right of the Customize dialog. Use this feature with care as no confirmation dialog will be displayed; the defaults will be set without any further notice or user input.

Assigning macros to events

In LibreOffice, when something happens, we say that an event occurred. For example, a document was opened, a key was pressed, or the mouse moved. You can associate a macro with an event, so the macro is run when the event occurs. A common use is to assign the “open document” event to run a macro that performs certain setup tasks for the document.

To associate a macro with an event, use the Events page of the Customize dialog. For more information, see Chapter 13 (Getting Started with Macros).

Adding functionality with extensions

An extension is a package that can be installed into LibreOffice to add new functionality.

Although individual extensions can be found in different places, the official extension repository is at <http://extensions.libreoffice.org/>. These extensions are free of charge, while others may be free or available for a fee.

Installing extensions

To install an extension, follow these steps:

- 1) Download an extension and save it anywhere on your computer.
- 2) In LibreOffice, select **Tools** → **Extension Manager** from the menu bar. In the Extension Manager dialog (Figure 9), click **Add**.
- 3) A file browser window opens. Find and select the extension you want to install and click **Open**. The extension begins installing. You may be asked to accept a license agreement.
- 4) When the installation is complete, the extension is listed in the Extension Manager dialog.

Tip

To get extensions that are listed in the repository, you can open the Extension Manager and click the **Get more extensions here** link.

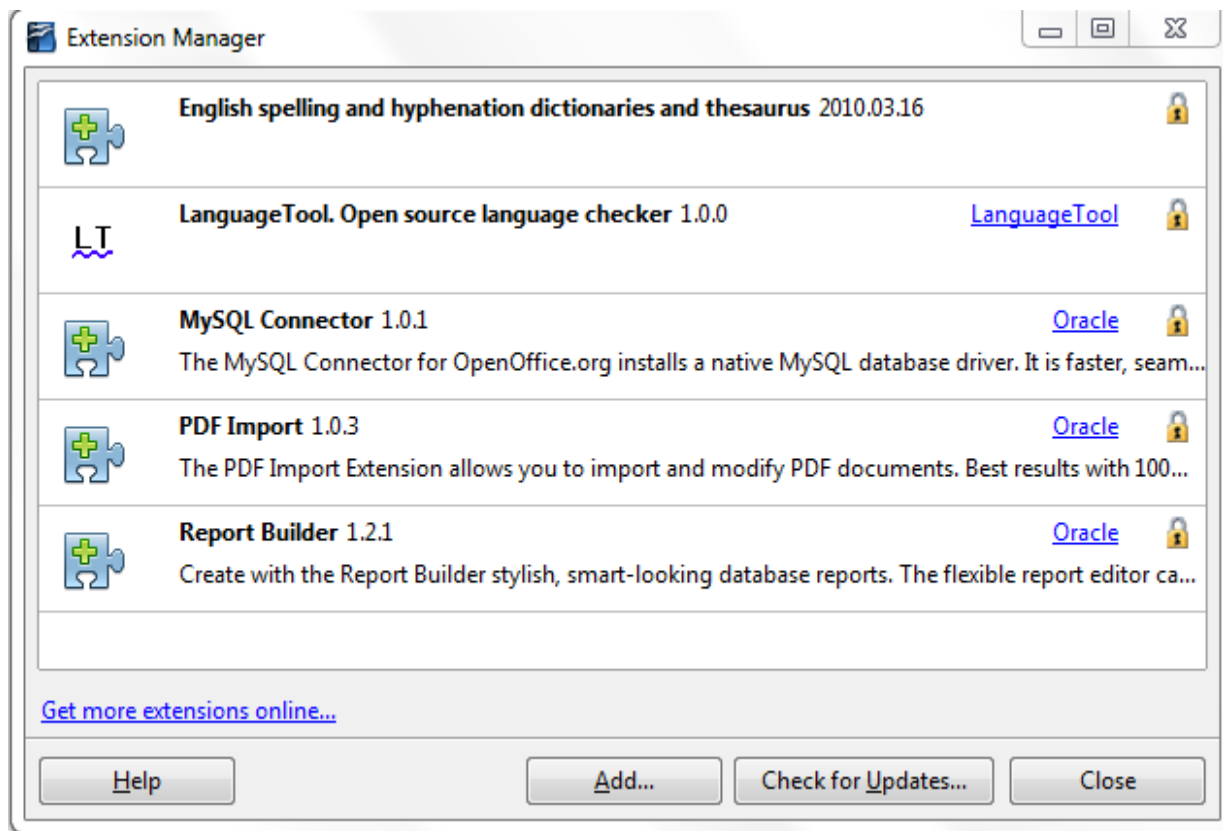


Figure 9: Using the Extension Manager

Note

To install a *shared* extension, you need write access to the LibreOffice installation directory.

Some popular extensions

This section describes a few of the more important and popular extensions to LibreOffice. In each case, you need to first install the extension as described in the previous section. All tools listed here are open source and free of charge.

PDF Import

Enables you to make minor modifications to the text of existing PDF files when the original source files do not exist or you are unable to open the source files. (Whenever possible, modify the source and regenerate the PDF to obtain the best results.)

When the extension is installed, PDF is listed as a choice in the File Type drop-down list in the **File** → **Open** dialog.

Best results can be achieved with the *PDF/ODF hybrid file* format, which this extension also enables. A hybrid PDF/ODF file is a PDF file that contains an embedded ODF source file. Hybrid PDF/ODF files will be opened in LibreOffice as an ODF file without any layout changes.

Non-hybrid PDF documents open in Draw. Depending on the complexity of the layout, changes may be easy or difficult to make, and the saved result may or may not preserve the original layout. Font substitution may occur.

Documents with more sophisticated layouts, such as those created with professional desktop publishing applications that use special fonts and complex vector graphics, are not suitable for the PDF Import Extension. Similarly, longer documents (> 20 pages) may cause some performance and stability problems.

Presenter Console

Provides extra control over slide shows (presentations); for example, the presenter has ability to see the upcoming slide, the slide notes, and a presentation timer—while the audience sees only the current slide. The Presenter Console displays the elements in three easily changeable views:

- The first view displays the current slide, including the effects, and the upcoming slide.
- The second view shows the speaker's notes in large, clear, and scalable type, plus the current and upcoming slide.
- The third view is a slide sorter view with the slide thumbnails.

Note

The Presenter Console works only on an operating system that supports multiple displays.

Report Builder

Creates stylish, complex database reports from Base. You can define group and page headers, group and page footers, and calculation fields. Export your reports into PDF or OpenDocument formats, or send them as email attachments.

Professional Template Pack II

Provides more than 120 templates for Writer, Calc, and Impress. Available in several languages. After you have installed this extension, you will find the templates under **File** → **New** → **Templates and Documents**.

Template Changer (for Writer)

Adds two new items to the **File** → **Templates** menu in Writer that allow you to assign a new template to the current document or to a folder of documents. All styles and formatting will be loaded from that template and the document will behave as it was created using that template.

Solver for Nonlinear Programming (for Calc)

Calc ships with a solver engine for linear programming only. This extension adds more solvers, which are capable of handling nonlinear problems as well as linear ones:

- DEPS - Differential Evolution & Particle Swarm Optimization
- SCO - Social Cognitive Optimization

DataPilot Tools for Calc

Adds some utility functions that make using the Calc DataPilot easier:

- Display the current source range for a DataPilot
- Change the source range for a DataPilot
- Refresh all DataPilots on the current sheet