

LibreOffice
The Document Foundation

Calc Guide

Chapter 3

Creating Charts and Graphs

Presenting information visually

Copyright

This document is Copyright © 2005–2012 by its contributors as listed below. You may distribute it and/or modify it under the terms of either the GNU General Public License (<http://www.gnu.org/licenses/gpl.html>), version 3 or later, or the Creative Commons Attribution License (<http://creativecommons.org/licenses/by/3.0/>), version 3.0 or later.

All trademarks within this guide belong to their legitimate owners.

Contributors

Barbara Duprey
Jean Hollis Weber
John A Smith

Feedback

Please direct any comments or suggestions about this document to:
documentation@global.libreoffice.org

Acknowledgments

This chapter is based on Chapter 3 of the *OpenOffice.org 3.3 Calc Guide*. The contributors to that chapter are:

Richard Barnes	John Kane	Peter Kupfer
Shelagh Manton	Alexandre Martins	Anthony Petrillo
Sowbhagya Sundaresan	Jean Hollis Weber	Linda Worthington
Ingrid Halama		

Publication date and software version

Published 3 May 2012. Based on LibreOffice 3.4.6.

Note for Mac users

Some keystrokes and menu items are different on a Mac from those used in Windows and Linux. The table below gives some common substitutions for the instructions in this chapter. For a more detailed list, see the application Help.

<i>Windows or Linux</i>	<i>Mac equivalent</i>	<i>Effect</i>
Tools > Options menu selection	LibreOffice > Preferences	Access setup options
<i>Right-click</i>	<i>Control+click</i>	Opens a context menu
<i>Ctrl (Control)</i>	⌘ (<i>Command</i>)	Used with other keys
<i>F5</i>	<i>Shift+⌘+F5</i>	Opens the Navigator
<i>F11</i>	⌘+T	Opens the Styles and Formatting window

Contents

Copyright	2
Note for Mac users	2
Introduction	5
Creating a chart	5
Choosing a chart type.....	7
Changing data ranges and axes labels.....	7
Selecting data series.....	8
Adding or changing titles, legend, and grids.....	8
Editing charts	9
Changing the chart type.....	9
Adding or removing chart elements.....	9
Data labels.....	11
Trend lines.....	12
Mean value lines.....	13
Y error bars.....	13
Formatting charts	14
Moving chart elements.....	15
Changing the chart area background.....	15
Changing the chart graphic background.....	16
Changing colors.....	16
Formatting 3D charts	16
Rotation and perspective.....	16
Appearance.....	17
Illumination.....	17
Rotating 3D charts interactively.....	18
Formatting the chart elements	18
Formatting axes and inserting grids.....	19
Formatting data labels.....	20
Hierarchical axis labels.....	20
Choosing and formatting symbols.....	20
Adding drawing objects to charts	21
Resizing and moving the chart	21
Using the Position and Size dialog.....	22
Gallery of chart types	23
Column charts.....	23
Bar charts.....	23
Pie charts.....	23
Donut charts.....	24
Area charts.....	25
Line charts.....	26
Scatter or XY charts.....	27

Bubble charts..... 28
Net charts..... 28
Stock charts..... 29
Column and line charts..... 30

Introduction

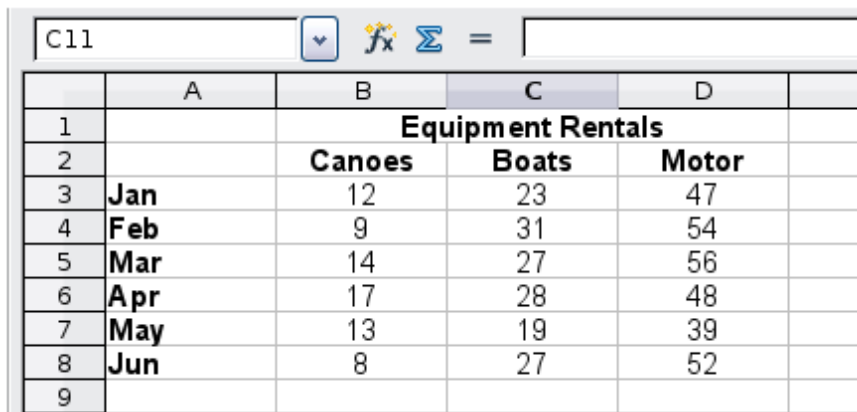
Charts and graphs can be powerful ways to convey information to the reader. LibreOffice Calc offers a variety of different chart and graph formats for your data.

Using Calc, you can customize charts and graphs to a considerable extent. Many of these options enable you to present your information in the best and clearest manner.

For readers who are interested in effective ways to present information graphically, two excellent introductions to the topic are William S. Cleveland's *The elements of graphing data*, 2nd edition, Hobart Press (1994) and Edward R. Tufte's *The Visual Display of Quantitative Information*, 2nd edition, Graphics Press (2001).

Creating a chart

To demonstrate the process of making charts and graphs in Calc, we will use the small table of data in Figure 1.

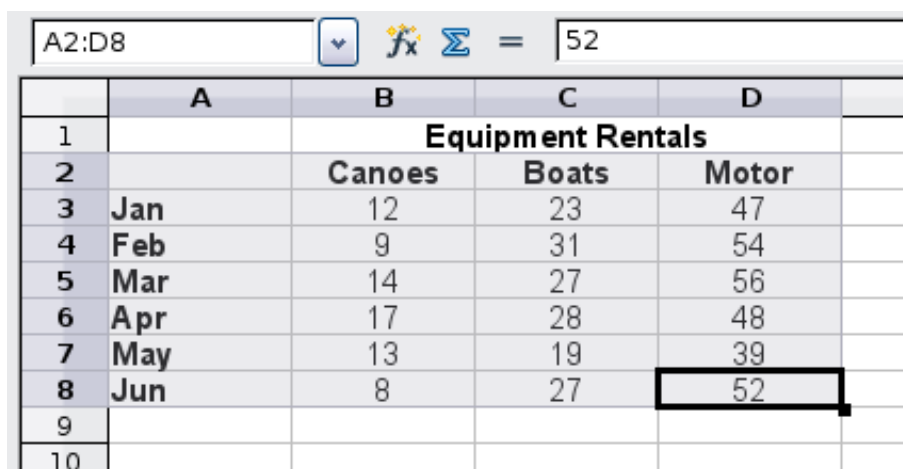


The screenshot shows a spreadsheet window with the formula bar displaying 'C11'. The spreadsheet contains the following data:

	A	B	C	D
1		Equipment Rentals		
2		Canoes	Boats	Motor
3	Jan	12	23	47
4	Feb	9	31	54
5	Mar	14	27	56
6	Apr	17	28	48
7	May	13	19	39
8	Jun	8	27	52
9				

Figure 1: Table of data for charting examples

To create a chart, first highlight (select) the data to be included in the chart. The selection does not need to be in a single block, as shown in Figure 2; you can also choose individual cells or groups of cells (columns or rows). See Chapter 1, Introducing Calc, for more about selecting cells and ranges of cells.



The screenshot shows the same spreadsheet as Figure 1, but with the data range A2:D8 selected. The formula bar displays 'A2:D8' and the value '52'. The cell containing '52' (D8) is highlighted with a thick black border.

	A	B	C	D
1		Equipment Rentals		
2		Canoes	Boats	Motor
3	Jan	12	23	47
4	Feb	9	31	54
5	Mar	14	27	56
6	Apr	17	28	48
7	May	13	19	39
8	Jun	8	27	52
9				
10				

Figure 2: Selecting data for plotting

Next, open the Chart Wizard dialog using one of two methods.

- Choose **Insert > Chart** from the menu bar.
- Or, click the **Chart** icon on the main toolbar.

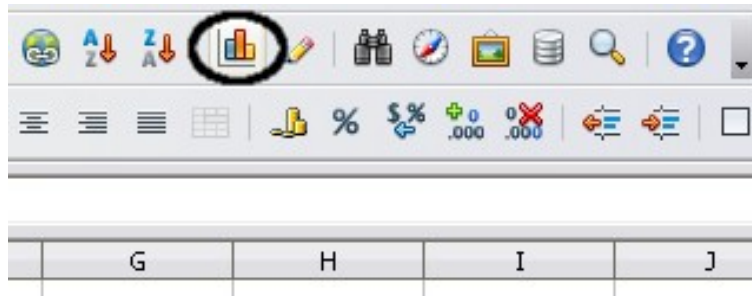


Figure 3: Insert chart from main toolbar

Either method inserts a sample chart on the worksheet, opens the Formatting toolbar, and opens the Chart Wizard, as shown in Figure 4.

Tip

Before choosing the Chart Wizard, place the cursor anywhere in the area of the data. The Chart Wizard will then do a fairly good job of guessing the range of the data. Just be careful that you have not included the title of your chart.

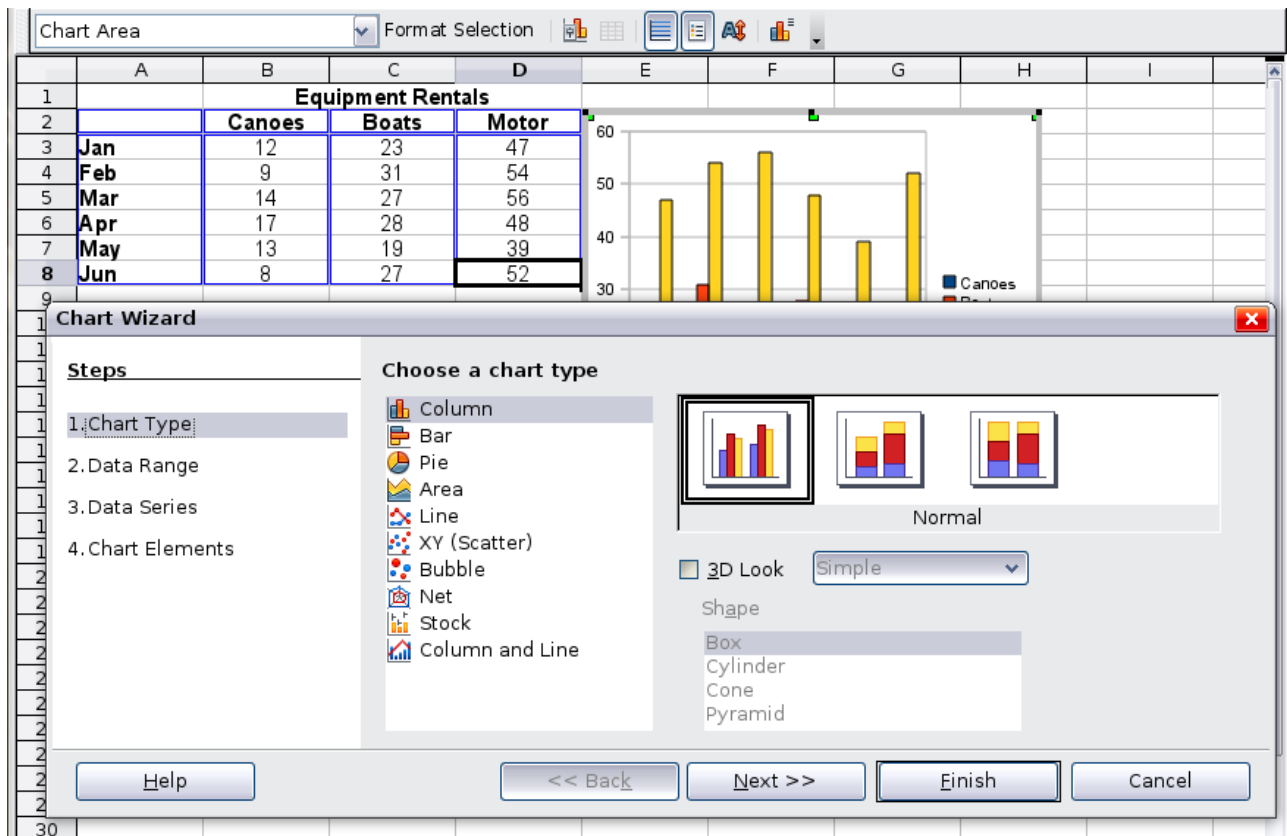


Figure 4: Chart Wizard, Step 1—Choose a chart type

Choosing a chart type

The Chart Wizard includes a sample chart with your data. This sample chart updates to reflect the changes you make in the Chart Wizard.

The Chart Wizard has three main parts: a list of steps involved in setting up the chart, a list of chart types, and the options for each chart type. At any time you can go back to a previous step and change selections.

Calc offers a choice of 10 basic chart types, with a few options for each type of chart. The options vary according to the type of chart you pick.

The first tier of choice is for two-dimensional (2D) charts. Only those types which are suitable for 3D (Column, Bar, Pie, and Area) give you an option to select a 3D look.

On the *Choose a chart type* page (Figure 4), select a type by clicking on its icon. The preview updates every time you select a different type of chart, and provides a good idea of what the finished chart will look like.

The current selection is highlighted (shown with a surrounding box) on the *Choose a chart type* page. The chart's name is shown just below the icons. For the moment, we will stick to the Column chart and click on **Next**.

Changing data ranges and axes labels

In Step 2, Data Range, you can manually correct any mistakes you have made in selecting the data.

On this page you can also change the way you are plotting the data by using the rows—rather than the columns—as data series. This is useful if you use a style of chart such as Donut or Pie to display your data.

Lastly, you can choose whether to use the first row or first column, or both, as labels on the axes of the chart.

You can confirm what you have done so far by clicking the **Finish** button, or click **Next** to change some more details of the chart.

We will click **Next** to see what we can do to our chart using the other pages of the Wizard.

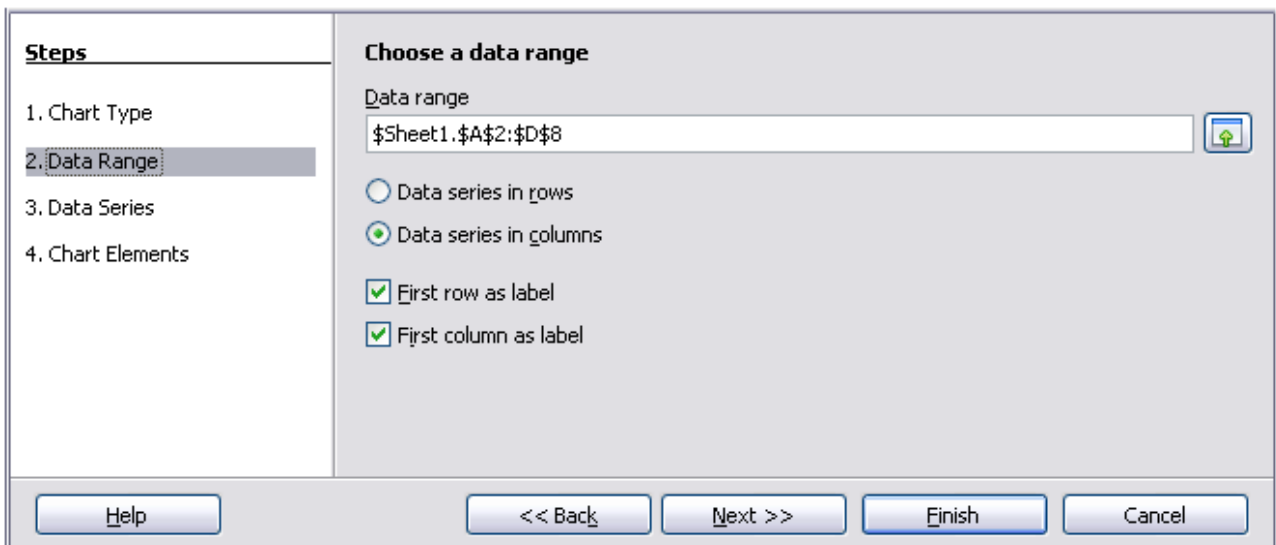


Figure 5: Changing data ranges and axes labels

Selecting data series

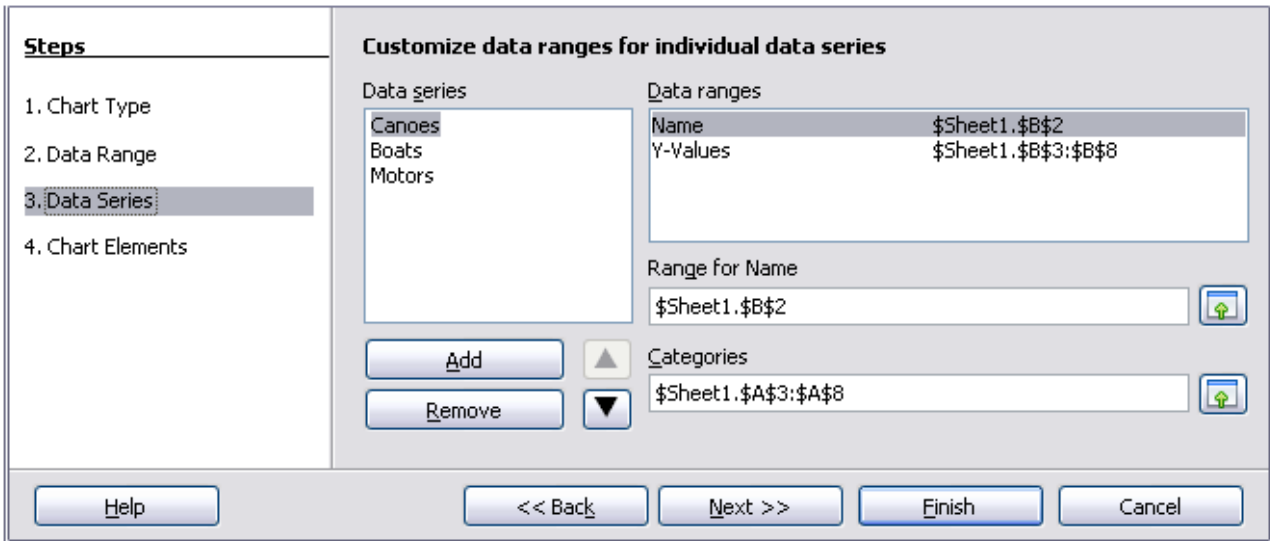



Figure 6: Amending data series and ranges

On the Data Series page, you can fine tune the data that you want to include in the chart. Perhaps you have decided that you do not want to include the data for canoes. If so, select **Canoes** in the *Data series* box and click on **Remove**. Each named data series has its ranges and its individual Y-values listed. This is useful if you have very specific requirements for data in your chart, as you can include or leave out these ranges.

Tip

You can click the **Shrink** button  next to the *Range for Name* box to work on the spreadsheet itself. This is handy if your data ranges are larger than ours and the Chart Wizard is in the way.

Another way to plot any unconnected columns of data is to select the first data series and then select the next series while holding down the *Ctrl* key. Or you can type the columns in the text boxes. The columns must be separated by semi-colons. Thus, to plot **B3:B11** against **G3:G11**, type the selection range as **B3 : B11 ; G3 : G11**.

The two data series you are selecting must be in separate columns or rows. Otherwise Calc will assume that you are adding to the same data series.

Click **Next** to deal with titles, legend and grids.

Adding or changing titles, legend, and grids

On the Chart Elements page (Figure 7), you can give your chart a title and, if desired, a subtitle. Use a title that draws the viewers' attention to the purpose of the chart: what you want them to see. For example, a better title for this chart might be *The Performance of Motor and Other Rental Boats*.

It may be of benefit to have labels for the x axis or the y axis. This is where you give viewers an idea as to the proportion of your data. For example, if we put *Thousands* in the y axis label of our graph, it changes the scope of the chart entirely. For ease of estimating data you can also display the x or y axis grids by selecting the **Display grids** options.

You can leave out the legend or include it and place it to the left, right, top or bottom.

To confirm your selections and complete the chart, click **Finish**.

Steps	Choose titles, legend, and grid settings	
1. Chart Type	Title: <input type="text" value="Equipment Rentals"/>	<input checked="" type="checkbox"/> Display legend
2. Data Range	Subtitle: <input type="text" value="Summer to Autumn"/>	<input type="radio"/> Left
3. Data Series	X axis: <input type="text"/>	<input checked="" type="radio"/> Right
4. Chart Elements	Y axis: <input type="text"/>	<input type="radio"/> Top
	Z axis: <input type="text"/>	<input type="radio"/> Bottom
	Display grids: _____	
	<input type="checkbox"/> X axis	<input checked="" type="checkbox"/> Y axis
		<input type="checkbox"/> Z axis
<input type="button" value="Help"/> <input type="button" value=" << Back"/> <input type="button" value=" Next >>"/> <input type="button" value="Finish"/> <input type="button" value="Cancel"/>		


Figure 7: Titles, legend and grids

Editing charts

After you have created a chart, you may find things you would like to change. Calc provides tools for changing the chart type, chart elements, data ranges, fonts, colors, and many other options, through the **Insert** and **Format** menus, the right-click (context) menu, and the Chart toolbar.

Changing the chart type

You can change the chart type at any time. To do so:

- 1) First select the chart by double-clicking on it. The chart should now be surrounded by a gray border.
- 2) Then do one of the following:
 - Choose **Format > Chart Type** from the menu bar.
 - Click the **Chart Type** icon  on the Formatting toolbar.
 - Right-click on the chart and choose **Chart Type**.

In each case, a dialog similar to the one in Figure 4 opens. See page 7 for more information.

- 3) Select the replacement chart type
- 4) Click **OK**.

Adding or removing chart elements

Figures 8 and 9 show the elements of 2D and 3D charts.

The default 2D chart includes only two of those elements:

- *Chart wall* contains the graphic of the chart displaying the data.
- *Chart area* is the area surrounding the chart graphic. The (optional) chart title and the legend (key) are in the chart area.

The default 3D chart also has the *chart floor*, which is not available in 2D charts.

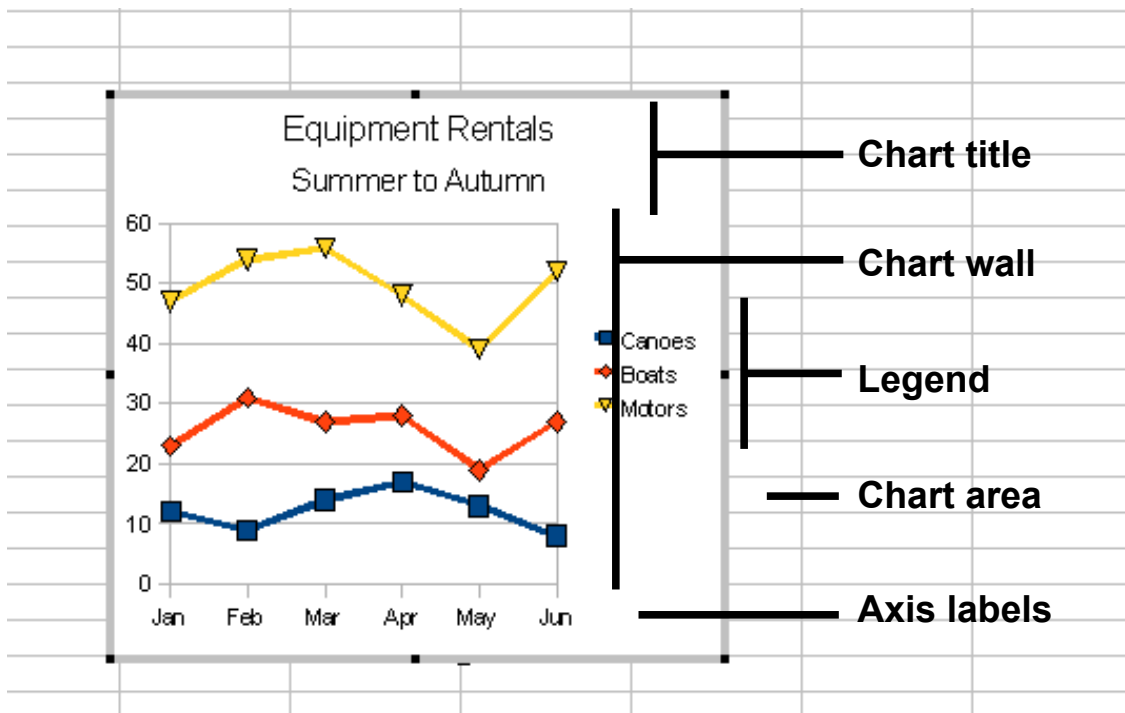


Figure 8: Elements of 2D chart

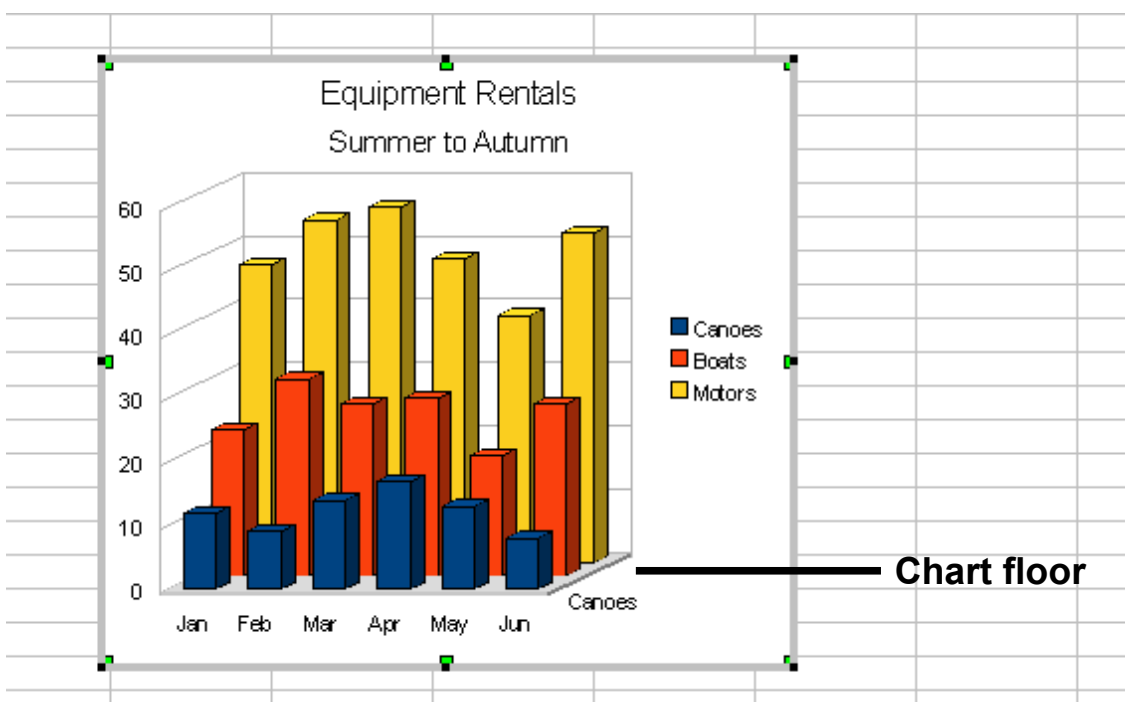


Figure 9: Elements of 3D chart

You can add other elements using the commands on the **Insert** menu when your chart is selected for editing (when it has a gray border around it; double-click the chart if it does not). The various choices open dialogs in which you can specify details.

The dialogs for Titles, Legend, Axes, and Grids are self-explanatory. The others are a bit more complicated, so we will take a look at them here.

Data labels

Data labels put information about each data point on the chart. They can be very useful for presenting detailed information, but you need to be careful to not create a chart that is too cluttered to read.

Choose **Insert > Data Labels**. The options are as follows.

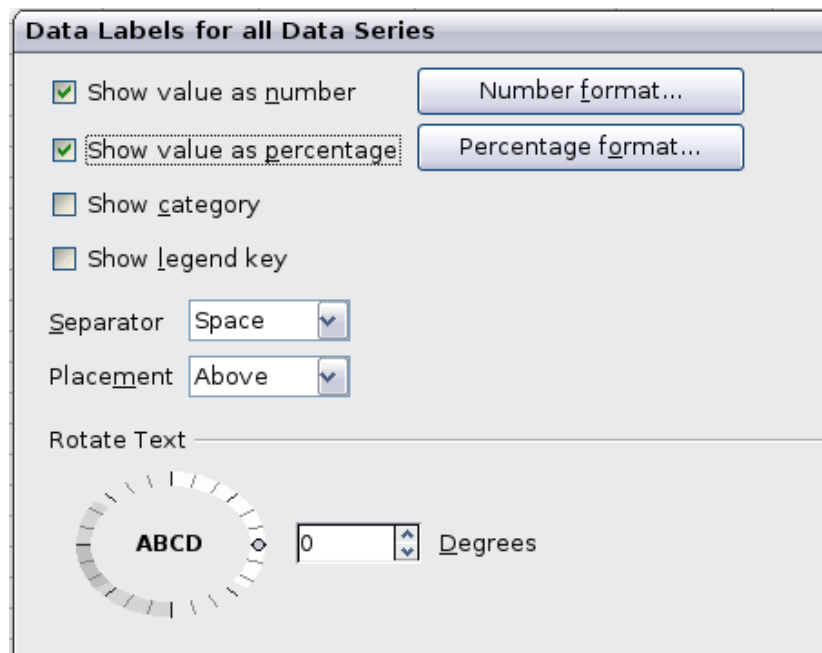


Figure 10: Data Labels dialog

Show value as number

Displays the numeric values of the data points. When selected, this option activates the **Number format** button.

Number format

Opens the Number Format dialog, where you can select the number format. This dialog is very similar to the one for formatting numbers in cells, described in Chapter 2, Entering, Editing, and Formatting Data.

Show value as percentage

Displays the percentage value of the data points in each column. When selected, this option activates the **Percentage format** button.

Percentage format

Opens the Number Format dialog, where you can select the percentage format.

Show category

Shows the data point text labels.

Show legend key

Displays the legend icons next to each data point label.

Separator

Selects the separator between multiple text strings for the same object.

Placement

Selects the placement of data labels relative to the objects.

Figure 22 on page 24 shows examples of values as text (neither *Show value as number* nor *Show value as percentage* selected) and values as percentages, as well as when data values are used as substitutes for legends or in conjunction with them.

Trend lines

When you have a scattered grouping of points in a graph, you may want to show the relationship of the points. A trend line is what you need. Calc has a good selection of regression types you can use for trend lines: linear, logarithm, exponential, and power. Choose the type that comes closest to passing through all of the points.

To insert trend lines for all data series, double-click the chart to enter edit mode. Choose **Insert > Trend Lines**, then select the type of trend line from *None*, *Linear*, *Logarithmic*, *Exponential*, or *Power*. You can also choose whether to show the equation for the trend line and the coefficient of determination (R^2).

To insert a trend line for a single data series, first select the data series in the chart, and then right-click and choose **Insert > Trend Line** from the context menu. The dialog for a single trend line is similar to the one below but has a second tab (Line), where you can choose attributes (style, color, width, and transparency) of the line.

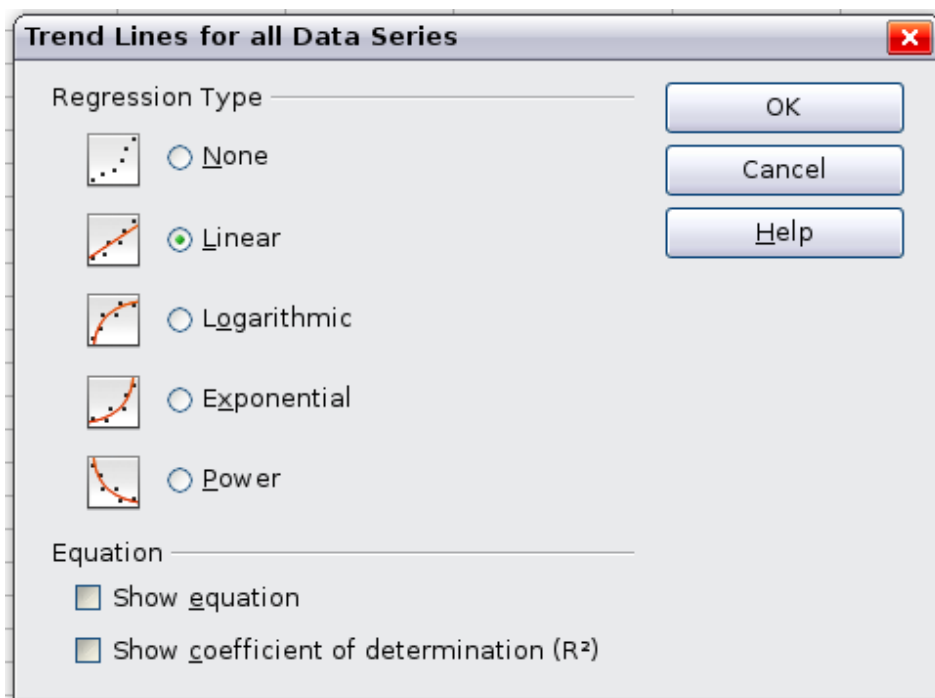


Figure 11: Trend Lines dialog

To delete a single trend line or mean value line, click the line, then press the *Del* key.

To delete all trend lines, choose **Insert > Trend Lines**, then select **None**.

A trend line is shown in the legend automatically.

If you insert a trend line on a chart type that uses categories, such as *Line* or *Column*, then the numbers 1, 2, 3, ... are used as x-values to calculate the trend line.

The trend line has the same color as the corresponding data series. To change the line properties, select the trend line and choose **Format Trend Line**. This opens the Line page of the Trend Lines dialog.

To show the trend line equation, select the trend line in the chart, right-click to open the context menu, and choose **Insert Trend Line Equation**.

When the chart is in edit mode, LibreOffice gives you the equation of the trend line and the correlation coefficient. Click on the trend line to see the information in the status bar. To show the equation and the correlation coefficient, select the line and choose **Insert R² and Trend Line Equation**.

For more details on the regression equations, see the topic *Trend lines in charts* in the Help.

Mean value lines

If you select *mean value* lines, Calc calculates the average of each selected data series and places a colored line at the correct level in the chart.

Y error bars

If you are presenting data that has a known possibility of error, such as social surveys using a particular sampling method, or you want to show the measuring accuracy of the tool you used, you may wish to show error bars on the chart. Select the chart and choose **Insert > Y Error Bars**.

Several options are provided on the Error Bars dialog. You can only choose one option at a time. You can also choose whether the error indicator shows both positive and negative errors, or only positive or only negative.

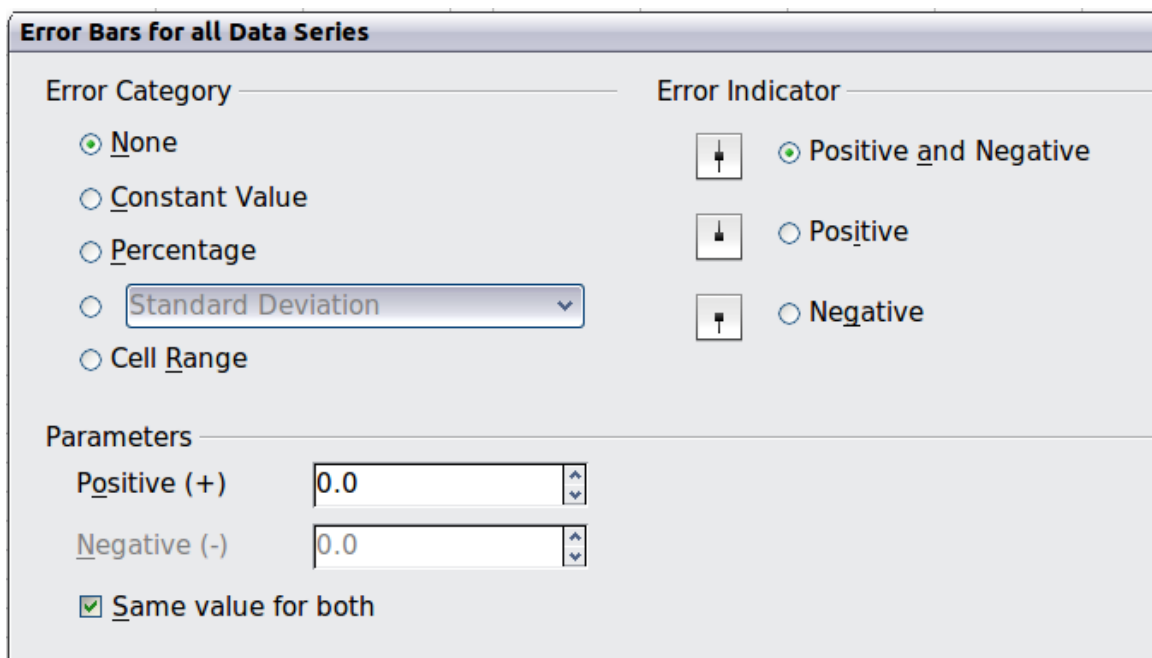


Figure 12: Specifying the parameters of error bars

- *Constant value* – you can have separate positive and negative values.
- *Percentage* – choose the error as a percentage of the data points.
- In the drop-down list:
 - Standard error
 - Variance – shows error calculated on the size of the biggest and smallest data points
 - Standard deviation – shows error calculated on standard deviation
 - Error margin – you designate the error
- *Cell Range* – calculates the error based on cell ranges you select. The Parameters section at the bottom of the dialog changes to allow selection of the cell ranges.

Formatting charts

The Format menu has many options for formatting and fine-tuning the appearance of your charts.

Double-click the chart so that it is enclosed by a gray border indicating edit mode; then, select the chart element that you want to format. Choose **Format** from the menu bar, or right-click to display a context menu relevant to the selected element. The formatting choices are as follows.

Format Selection

Opens a dialog in which you can specify the area fill, borders, transparency, characters, font effects, and other attributes of the selected element of the chart (see page 18).

Position and Size

Opens a dialog (see page 22).

Arrangement

Provides two choices: **Bring Forward** and **Send Backward**, of which only one may be active for some items. Use these choices to arrange overlapping data series.

Title

Formats the titles of the chart and its axes.

Legend

Formats the location, borders, background, and type of the legend.

Axis

Formats the lines that create the chart as well as the font of the text that appears on both the X and Y axes.

Grid

Formats the lines that create a grid for the chart.

Chart Wall, Chart Floor, Chart Area

Described in the following sections.

Chart Type

Changes what kind of chart is displayed and whether it is two- or three-dimensional.

Data Ranges

Explained on page 7 (Figure 5 and Figure 6).

3D View

Formats 3D charts (see page 16).

Note

Chart Floor and **3D View** are only available for a 3D chart. These options are unavailable (grayed out) if a 2D chart is selected.

In most cases you need to select the exact element you want to format. Sometimes this can be tricky to do with the mouse, if the chart has many elements, especially if some of them are small or overlapping. If you have Tooltips turned on (in **Tools > Options > LibreOffice.org > General > Help**, select **Tips**), then as you move the mouse over each element, its name appears in the Tooltip. Once you have selected one element, you can press *Tab* to move through the other elements until you find the one you want. The name of the selected element appears in the Status Bar.

Moving chart elements

You may wish to move or resize individual elements of a chart, independent of other chart elements. For example, you may wish to move the legend to a different place. Pie charts allow moving of individual wedges of the pie (in addition to the choice of “exploding” the entire pie).

- 1) Double-click the chart so that it is enclosed by a gray border.
- 2) Double-click any of the elements—the title, the legend, or the chart graphic. Click and drag to move the element. If the element is already selected, then move the pointer over the element to get the move icon (small hand), then click, drag and move the element.
- 3) Release the mouse button when the element is in the desired position.

Note

If your graphic is 3D, round red handles appear which control the three-dimensional angle of the graphic. You cannot resize or reposition the graphic while the round red handles are showing. With the round red handles showing, *Shift+Click* to get the green resizing handles. You can now resize and reposition your 3D chart graphic. See the following tip.

Tip

You can resize the chart graphic using its green resizing handles (*Shift+Click*, then drag a corner handle to maintain the proportions). However, you cannot resize the title or the key.

Changing the chart area background

The chart area is the area surrounding the chart graphic, including the (optional) main title and key.

- 1) Double-click the chart so that it is enclosed by a gray border.
- 2) Choose **Format > Chart Area**.
- 3) On the Chart Area dialog, choose the desired format settings.

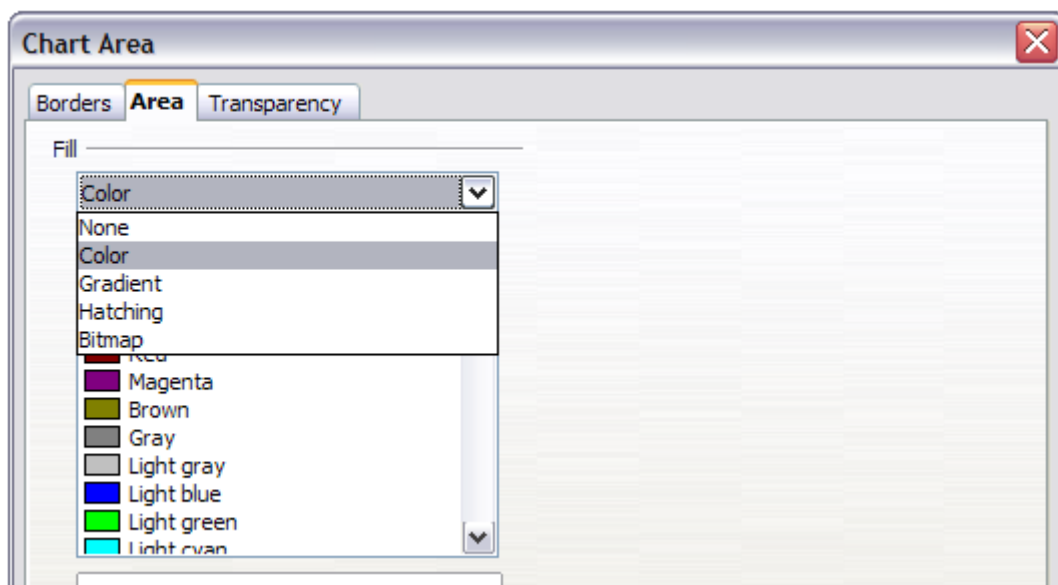


Figure 13: Chart Area dialog showing Fill selections

On the *Area* page, you can change the color, or choose a hatch pattern, bitmap or some preset gradients. Click on the drop-down box to see the options. Patterns are probably more useful than color if you have to print out your chart in black and white.

You can also use the Transparency page to change the transparency of the area. If you used a preset gradient from the Area page, you can see the different parameters of which it is composed.

Changing the chart graphic background

The Chart Wall is the area that contains the chart graphic.

- 1) Double-click the chart so that it is enclosed by a gray border.
- 2) Choose **Format > Chart Wall**. The Chart Wall dialog has the same formatting options as described in “Changing the chart area background” above.
- 3) Choose your settings and click **OK**.

Changing colors

If you want to modify the color scheme from the default, or you want to add extra chart colors, for the charts in all your documents, go to **Tools > Options > Charts > Default Colors**, where such changes can be made. Changes made in this dialog affect the default chart colors for any chart you make in future.

Formatting 3D charts

Use **Format > 3D View** to fine tune 3D charts. The 3D View dialog has three pages, where you can change the perspective of the chart, whether the chart uses the simple or realistic schemes, or your own custom scheme, and the illumination which controls where the shadows will fall.

Rotation and perspective

To rotate a 3D chart or view it in perspective, enter the required values on the *Perspective* page of the 3D View dialog. You can also rotate 3D charts interactively; see page 18.

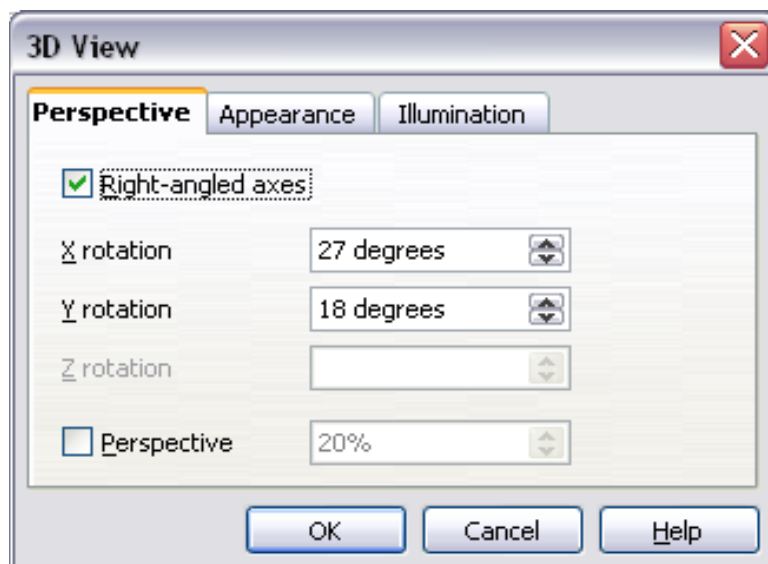


Figure 14: Rotating a chart

Some hints for using the Perspective page:

- Set all angles to 0 for a front view of the chart. Pie charts and donut charts are shown as circles.
- With Right-angled axes enabled, you can rotate the chart contents only in the X and Y direction; that is, parallel to the chart borders.

- An x value of 90, with y and z set to 0, provides a view from the top of the chart. With x set to -90, the view is from the bottom of the chart.
- The rotations are applied in the following order: x first, then y, and z last.
- When shading is enabled and you rotate a chart, the lights are rotated as if they are fixed to the chart.
- The rotation axes always relate to the page, not to the axes of the chart. This is different from some other chart programs.
- Select the Perspective option to view the chart in central perspective as through a camera lens instead of using a parallel projection.

Set the focus length with the spin button or type a number in the box. 100% gives a perspective view where a far edge in the chart looks approximately half as big as a near edge.

Appearance

Use the Appearance page to modify some aspects of the appearance of a 3D chart.

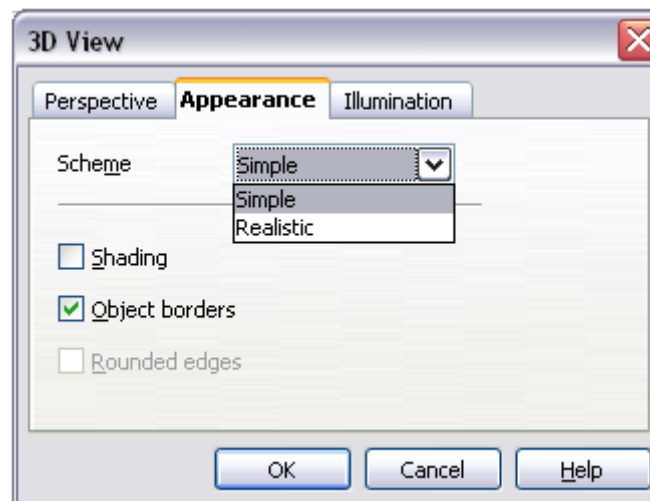


Figure 15: Modifying appearance of 3D chart

Select a scheme from the list box. When you select a scheme, the options and the light sources are set accordingly. If you select or deselect a combination of options that is not given by the Realistic or Simple schemes, you create a Custom scheme.

Select **Shading** to use the Gouraud method for rendering the surface. Otherwise, a flat method is used. The flat method sets a single color and brightness for each polygon. The edges are visible, soft gradients and spot lights are not possible. The Gouraud method applies gradients for a smoother, more realistic look. Refer to the *Draw Guide* for more details on shading.

Select **Object Borders** to draw lines along the edges.

Select **Rounded Edges** to smooth the edges of box shapes. In some cases this option is not available.

Illumination

Use the *Illumination* page (Figure 16) to set the light sources for the 3D view. Refer to the *Draw Guide* for more details on setting the illumination.

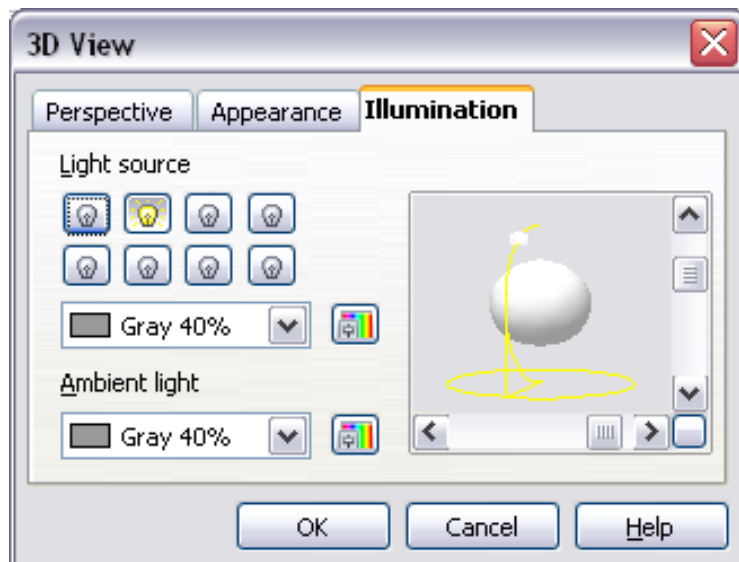


Figure 16: Setting the illumination

Click any of the eight buttons to switch a directed light source on or off. By default, the second light source is switched on. It is the first of seven normal, uniform light sources. The first light source projects a specular light with highlights.

For the selected light source, you can then choose a color and intensity in the list just below the eight buttons. The brightness values of all lights are added, so use dark colors when you enable multiple lights.

Each light source always points at the middle of the object initially. To change the position of the light source, use the small preview inside this page. It has two sliders to set the vertical and horizontal position of the selected light source.

The button in the corner of the small preview switches the internal illumination model between a sphere and a cube.

Use the Ambient light list to define the ambient light which shines with a uniform intensity from all directions.

Rotating 3D charts interactively

In addition to using the Perspective page of the 3D View dialog to rotate 3D charts, you can also rotate them interactively.

Select the Chart Wall, then hover the mouse pointer over a corner handle or the rotation symbol found somewhere on the chart. The cursor changes to a rotation icon.

Press and hold the left mouse button and drag the corner in the direction you wish. A dashed outline of the chart is visible while you drag, to help you see how the result will look.

Formatting the chart elements

Depending on the purpose of your document, for example a screen presentation or a printed document for a black and white publication, you might wish to use more detailed control over the different chart elements to give you what you need.

To format an element, left-click on the element that you wish to change, for example one of the axes. The element will be highlighted with green squares. Then, right-click and choose an item from the context menu. Each chart element has its own selection of items. In the next few sections we explore some of the options.

Formatting axes and inserting grids

Sometimes you need to have a special scale for one of the axes of your chart, or you need smaller grid intervals, or you want to change the formatting of the labels on the axis. After highlighting the axis you wish to change, right-click and choose one of the items from the context menu.

Choosing **Format > Axis > Y Axis** from the Menu bar, opens the dialog shown in Figure 17. The fields available on this dialog depend on the type of chart and whether it is 2D or 3D.

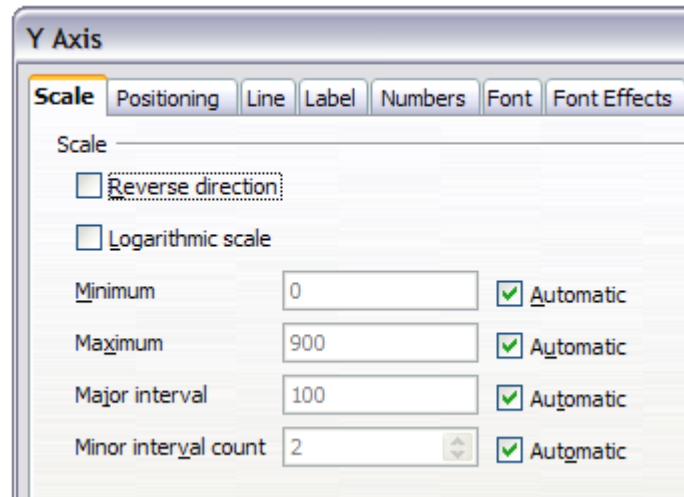


Figure 17: Formatting for Y axis scales

On the *Scale* page, you can choose to change the default linear scale to a logarithmic one, the maximum and minimum scale values, and the major and minor increments (intervals) of the scale. You must first deselect the **Automatic** option in order to modify the value for any scale. You may also choose to reverse the direction of the scale.

On the *Label* page (Figure 18), you can choose whether to show or hide the labels, how to handle them when they will not all fit neatly into one row (for example, if the words are too long), and whether to have them at an angle to the axis.

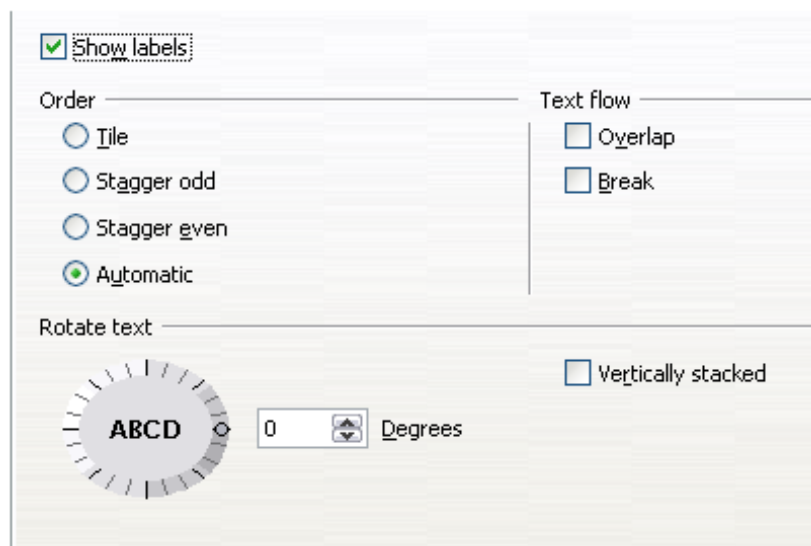


Figure 18: Formatting axis labels

The *Positioning* page allows you to set where this axis crosses the other and the position of the labels and the interval marks for the axis.

The other tabs on the dialog, *Line*, *Numbers*, *Font* and *Font Effects* are pretty straightforward and need little explanation. The Line page lets you set the attributes for the line used for the vertical axis. The Numbers page lets you set the number attributes for the number style used on the axis. Font and Font Effects let you format among others, such things as font family, size, color and style

Formatting data labels

You can choose properties for the labels of the data series. Double-click the chart to put it into edit mode. Right-click on a data label. This opens a dialog with several tabs where you can change the color of the label text, the size of the font, and other attributes. The Label tab is shown in Figure 10.

On the Data Labels tab, you can choose whether to:

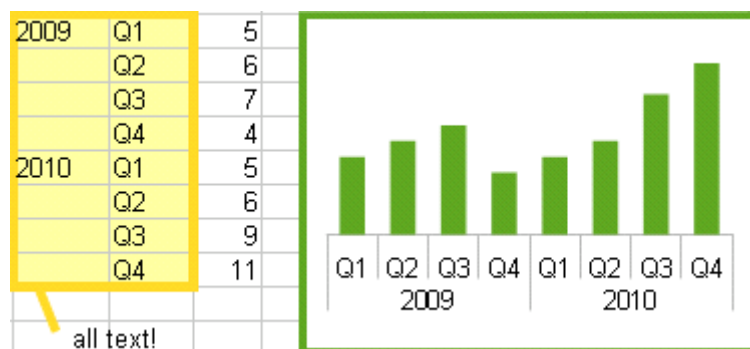
- Show the labels as text
- Show numeric values as a percentage or a number
- Include the legend key as part of the label

These choices are the same as those shown in Figure 10 on page 11.

The text for labels is taken from the spreadsheet data and it cannot be changed here. If the text needs to be abbreviated, or if it did not label your graph as you were expecting, you need to change it in the original data table.

Hierarchical axis labels

Multiple columns of categories are displayed in a hierarchical manner at the axis as shown. To get that automatically while creating a chart, make sure that all the first columns (or rows) contain text and not only numbers. You can also choose to set the ranges for categories to multiple columns on the Data Series page in the Wizard or the Data Ranges dialog.



Choosing and formatting symbols

In line and scatter charts the symbols representing the points can be changed to a different symbol shape or color through the object properties dialog. Select the data series you wish to change, right-click, and choose **Format > Data Series** from the context menu.

On the Line page of the Data Series dialog, in the Icon section, choose from the drop-down list **Select > Symbols**. Here you can choose no symbol, a symbol from an inbuilt selection, a more exciting range from the gallery, or if you have pictures you need to use instead, you can insert them using **Select > From file**.

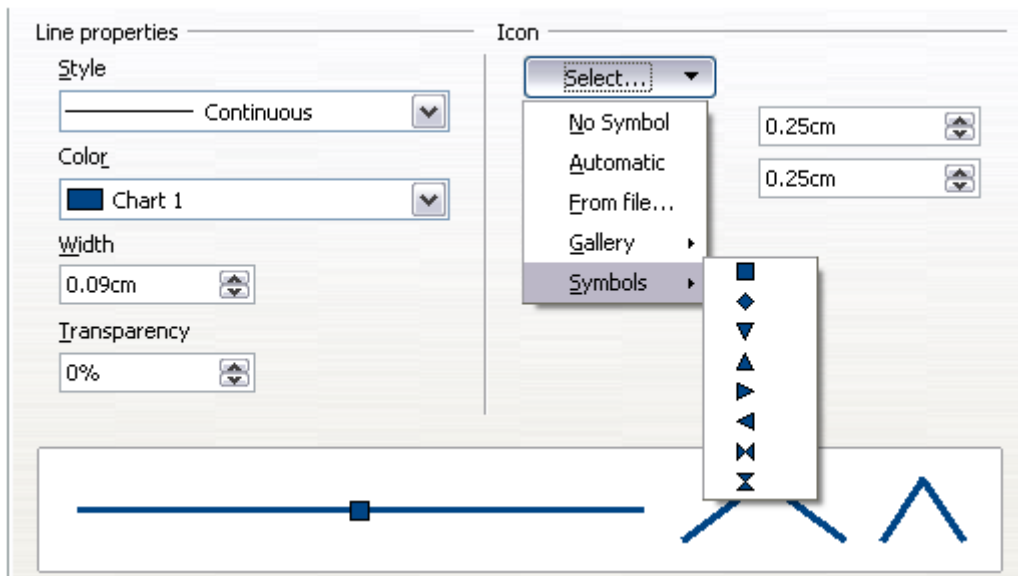
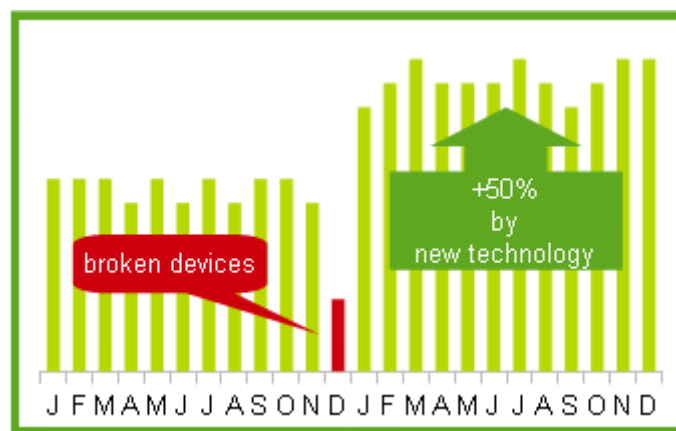


Figure 19: Symbol selection

Adding drawing objects to charts

As in the other LibreOffice components, you can use the drawing toolbar to add simple shapes such as lines, rectangles, and text objects, or more complex shapes such as symbols or block arrows. Use these additional shapes to add explanatory notes to your chart, for example.

To format the drawing objects, right-click and choose from the context menu.




Resizing and moving the chart

You can resize or move all elements of a chart at the same time, in two ways: interactively, or by using the Position and Size dialog. You may wish to use a combination of both methods: interactive for quick and easy change, then the dialog for precise sizing and positioning.

To resize a chart interactively:

- 1) Click once on the chart to select it. Green sizing handles appear around the chart.
- 2) To increase or decrease the size of the chart, click and drag one of the markers in one of the four corners of the chart. To maintain the correct ratio of the sides, hold the *Shift* key down while you click and drag.

To move a chart interactively:

- 1) Click once on the chart to select it. Green sizing handles appear around the chart.
- 2) Hover the mouse pointer anywhere over the chart. When it changes to the **move**  cursor, click and drag the chart to its new location.
- 3) Release the mouse button when the chart is in the desired position.

Using the Position and Size dialog

To resize or move a chart using the Position and Size dialog:

- 1) Click on the chart to select it. Green sizing handles appear around the chart.
- 2) Right-click and choose **Position and Size** from the context menu.
- 3) Make your choices on this dialog.

Position is defined as an X,Y coordinate relative to a fixed point (the *base point*), typically located at the upper left of the document. You can temporarily change this base point to make positioning or dimensioning simpler (click on the spot corresponding to the location of the base point in either of the two selection windows on the right side of the dialog—upper for positioning or lower for dimensioning).

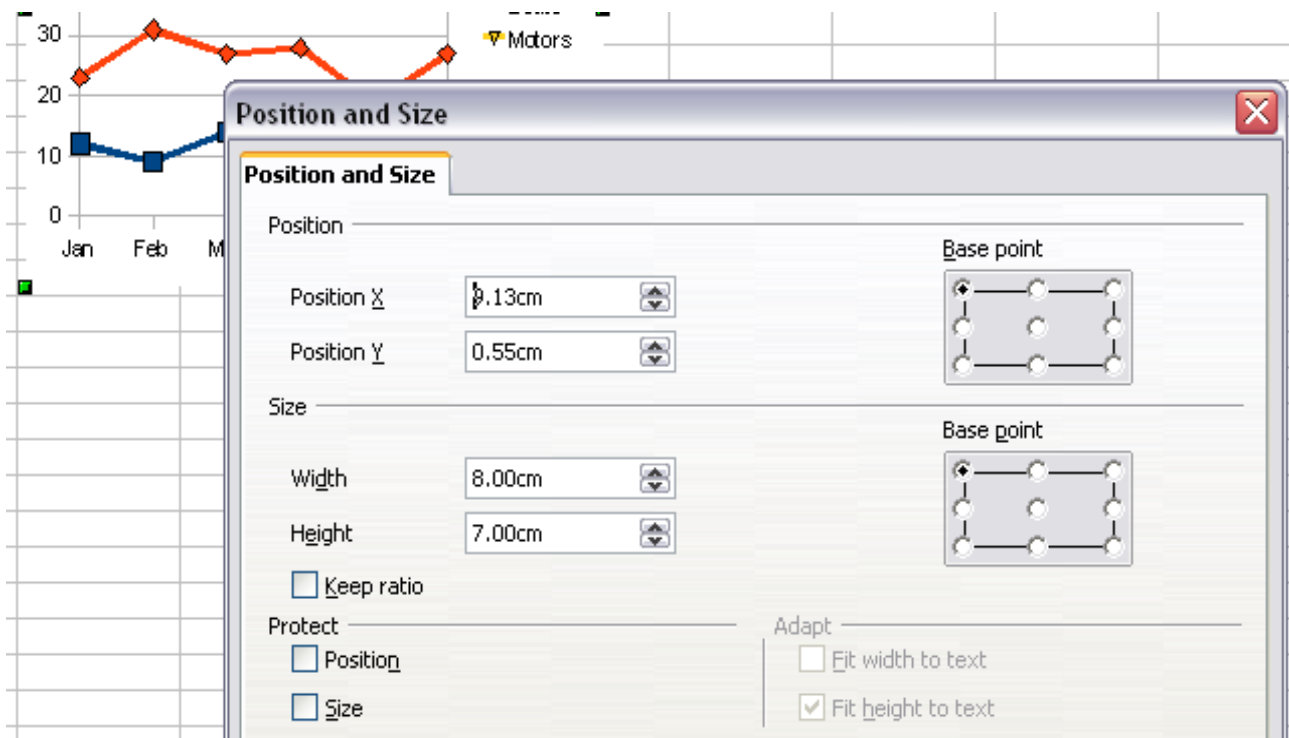


Figure 20: Defining the position and size of an object

The possible base point positions correspond to the handles on the selection frame, plus a central point. The change in base point position lasts only as long as you have the dialog open; when you close this dialog, Calc resets the base point to the standard position.

Tip

The **Keep ratio** option is very useful. Select it to keep the ratio of width to height fixed while you change the size of an object.

Either or both the size and position can be protected so that they cannot be accidentally changed. Select the appropriate options.

Tip

If you cannot move an object, check to see if its position is protected.

Gallery of chart types

It's important to remember that while your data can be presented with a number of different charts, the message you want to convey to your audience dictates the chart you ultimately use. The following sections present examples of the types of charts that Calc provides, with some of the tweaks that each sort can have and some notes as to what purpose you might have for that chart type. For details, see the Help.

Column charts

Column charts are commonly used for data that shows trends over time. They are best for charts that have a relatively small number of data points. (For large time series a line chart would be better.) It is the default chart type, as it is one of the most useful charts and the easiest to understand.

Bar charts

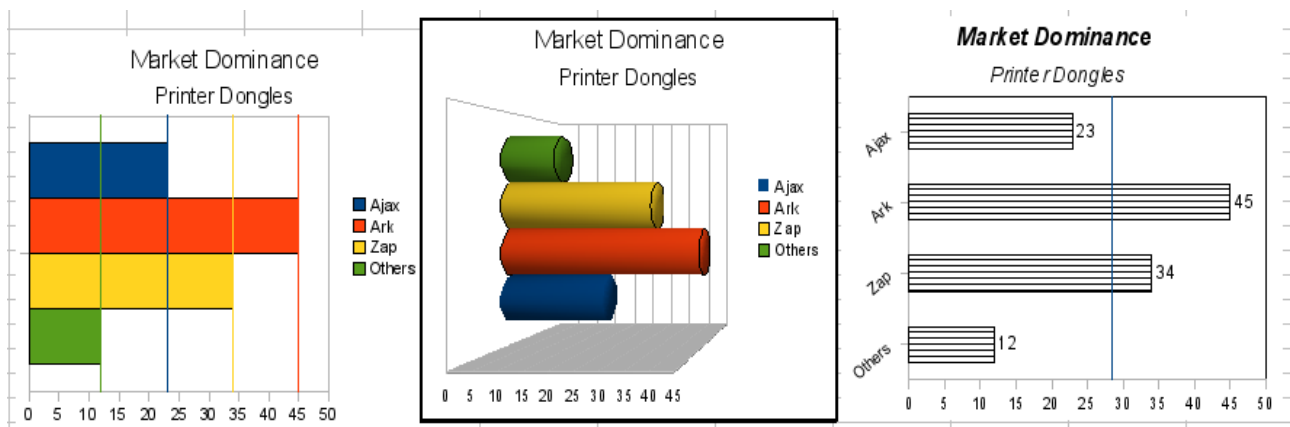


Figure 21: Three bar graph treatments.

Bar charts are excellent for giving an immediate visual impact for data comparison in cases when time is not an important factor, for example, when comparing the popularity of a few products in a marketplace.

- The first chart is achieved quite simply by using the chart wizard with **Insert > Grids**, deselecting y-axis, and using **Insert > Mean Value Lines**.
- The second chart is the 3D option in the chart wizard with a simple border and the 3D chart area twisted around.
- The third chart is an attempt to get rid of the legend and put labels showing the names of the companies on the axis instead. We also changed the colors to a hatch pattern.

Pie charts

Pie charts are excellent when you need to compare proportions. For example, comparisons of departmental spending: what the department spent on different items or what different departments spent. They work best with smaller numbers of values, about half a dozen; more than this and the visual impact begins to fade.

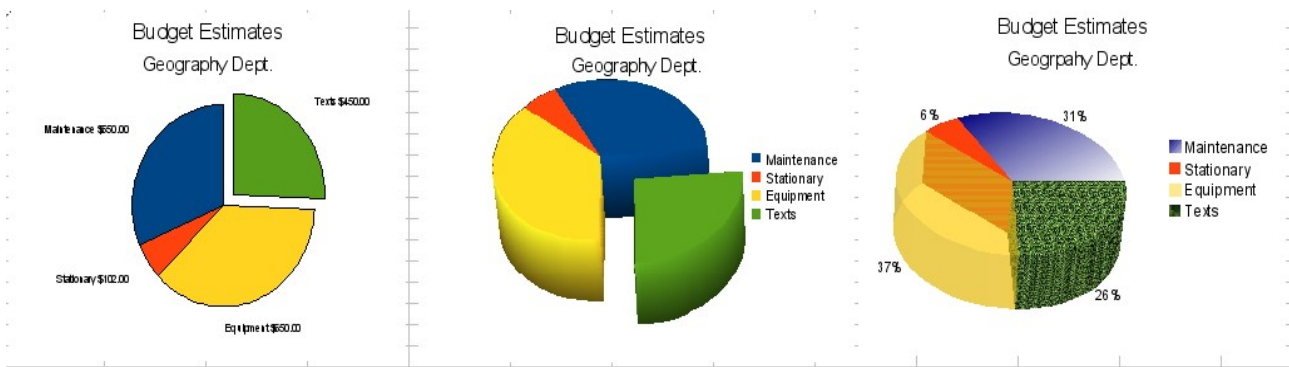


Figure 22: Pie charts

As the Chart Wizard guesses the series that you wish to include in your pie chart, you might need to adjust this initially on the Data Ranges page of the Wizard if you know you want a pie chart, or by using the **Format > Data Ranges > Data Series** dialog.

You can do some interesting things with a pie chart, especially if you make it into a 3D chart. It can then be tilted, given shadows, and generally turned into a work of art. Just do not clutter it so much that your message is lost, and be careful that tilting does not distort the relative size of the segments.

You can choose in the Chart Wizard to explode the pie chart, but this is an all or nothing option. If your aim is to accentuate one piece of the pie, you can separate out one piece by carefully highlighting it after you have finished with the Chart Wizard, and dragging it out of the group. When you do this you might need to enlarge the chart area again to regain the original size of the pieces.

The effects achieved in Figure 22 are explained below.

- 2D pie chart with one part of the pie exploded: Choose **Insert > Legend** and deselect the *Display legend* box. Choose **Insert > Data Labels** and choose *Show value as number*. Then carefully select the piece you wish to highlight, move the cursor to the edge of the piece and click (the piece will have nine green highlight squares to mark it), and then drag it out from the rest of the pieces. The pieces will decrease in size, so you need to highlight the chart wall and drag it at a corner to increase the size.
- 3D pie chart with realistic schema and illumination: Choose **Format > 3D view > Illumination** where you can change the direction of the light, the color of the ambient light, and the depth of the shade. We also adjusted the 3D angle of the disc in the *Perspective* dialog on the same set of tabs.

The chart updates as you make changes, so you can immediately see the effects.

If you want to separate out one of the pieces, click on it carefully; you should see a wire frame highlight. Drag it out with the mouse and then, if necessary, increase the size of the chart wall.

- 3D pie chart with different fill effects in each portion of the pie: Choose **Insert > Data labels** and select *show value as percentage*. Then carefully select each of the pieces so that it has a wire frame highlight and right-click to get the object properties dialog; choose the *Area* tab. For one we chose a bitmap, for another a gradient and for the third we used the *Transparency* tab and adjusted the transparency to 50%.

Donut charts

Donut charts are a variation on the pie chart. To create one, choose Pie in the Chart Wizard dialog, and choose the third or fourth type of pie chart. For more variety, choose 3D Look.

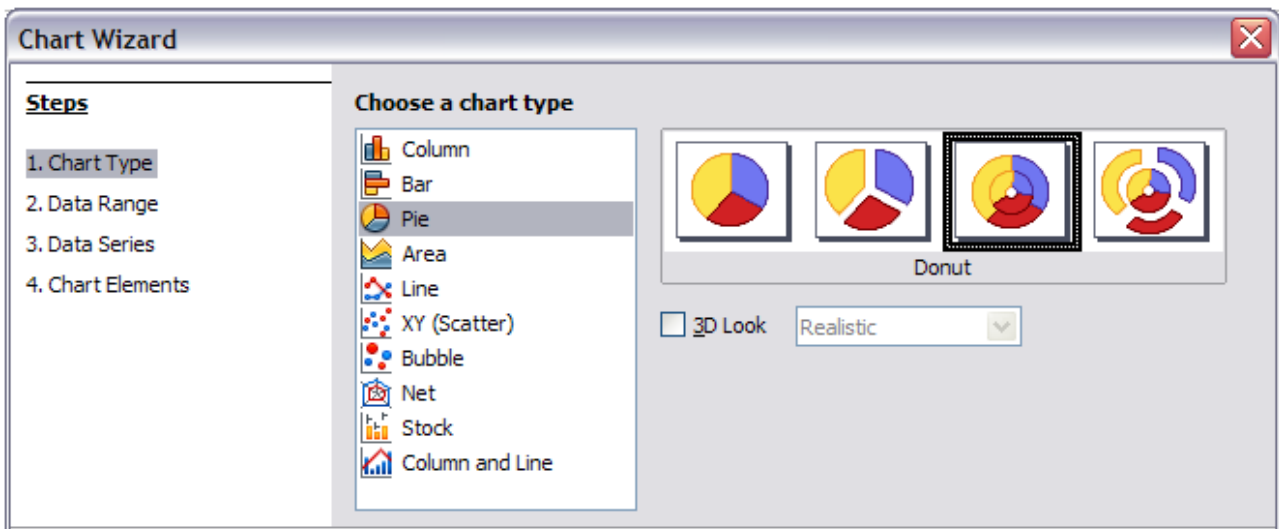


Figure 23: Choosing a donut chart

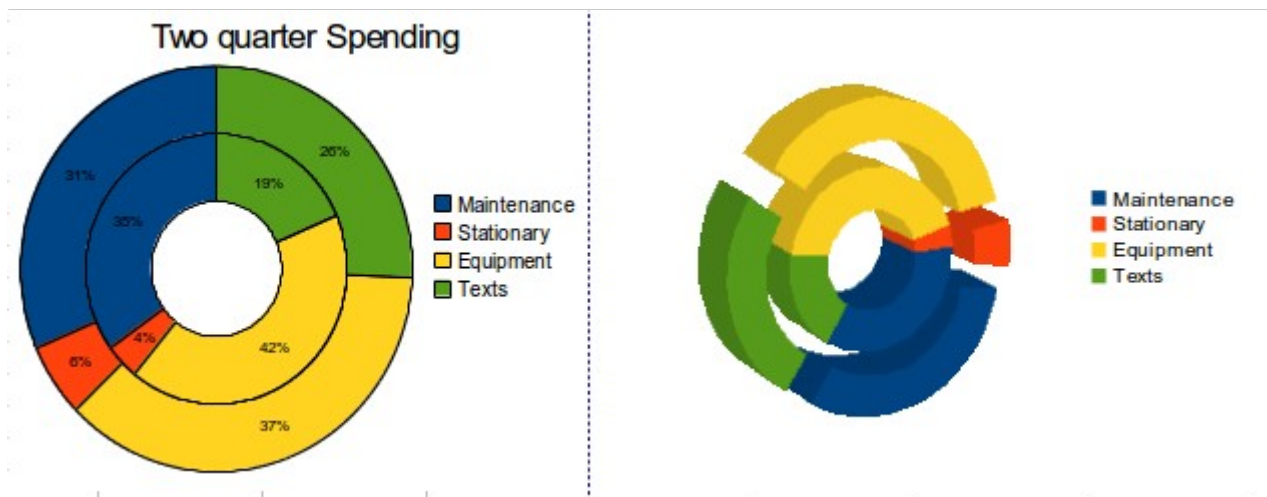


Figure 24: Examples of donut charts

Area charts

An *area chart* is a version of a line or column graph. It may be useful where you wish to emphasize volume of change. Area charts have a greater visual impact than a line chart, but the data you use will make a difference.

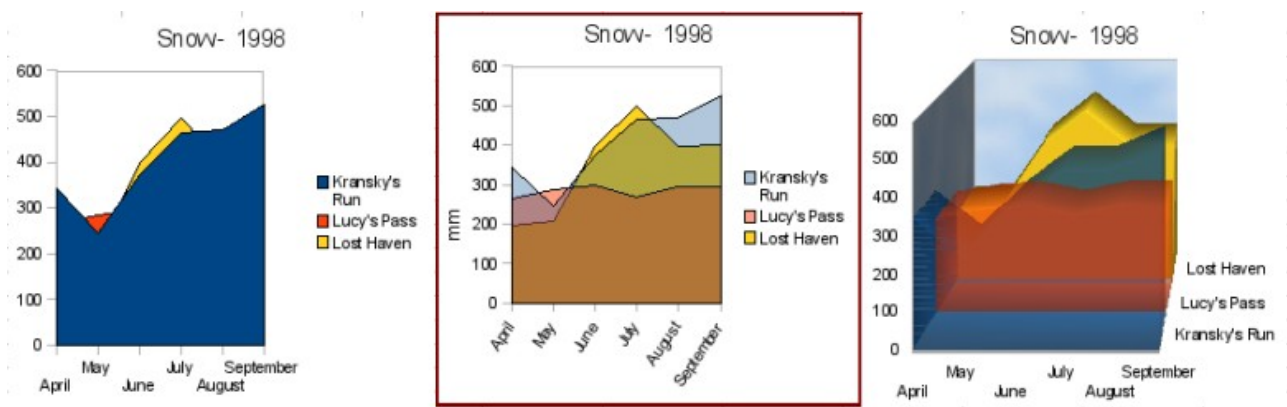


Figure 25: Area charts—the good, the bad, and the ugly

As shown in Figure 25, an area chart is sometimes tricky to use. This may be one good reason to use transparency values in an area chart. After setting up the basic chart using the Chart Wizard, do this:

- Right-click on the Y axis and choose **Delete Major Grid**. As the data overlaps, some of it is missing behind the first data series. This is not what you want. A better solution is shown in Chart 2.
- After deselecting the Y axis grid, right-click on each data series in turn and choose **Format Data Series**. On the *Transparency* tab, set Transparency to 50%. The transparency makes it easy to see the data hidden behind the first data series. Now, right-click on the X axis and choose **Format Axis**. On the *Label* tab, choose **Tile** in the *Order* section and set the Text orientation to 55 degrees. This places the long labels at an angle.
- To create the third variation, after doing the steps above, right-click and choose **Chart Type**. Choose the **3D Look** option and select **Realistic** from the drop-down list. We also twisted the chart area around and gave the chart wall a picture of the sky. As you can see, the legend turns into labels on the z-axis. But overall, though it is visually more appealing, it is more difficult to see the point you are trying to make with the data.

Other ways of visualizing the same data series are represented by the stacked area chart or the percentage stacked area chart.

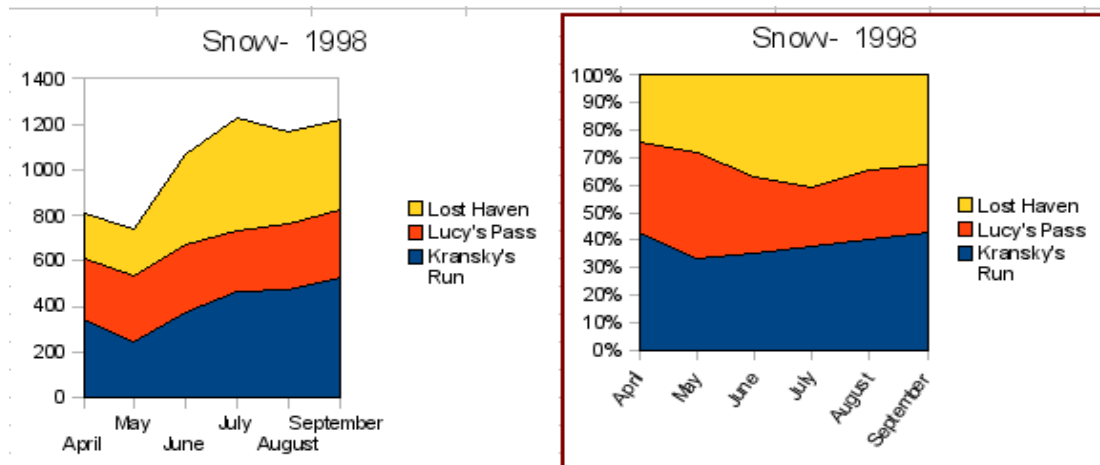


Figure 26: Stacked and percentage stacked area charts

The first does what it says: each number of each series is added to the others so that it shows an overall volume but not a comparison of the data. The percentage stacked chart shows each value in the series as a part of the whole. For example in June all three values are added together and that number represents 100%. The individual values are a percentage of that. Many charts have varieties which have this option.

Line charts

A *line chart* is a time series with a progression. It is ideal for raw data, and useful for charts with plentiful data that show trends or changes over time where you want to emphasize continuity. On line charts, the x-axis is ideal to represent time series data.

Things to do with lines: thicken them, make them 3D, smooth the contours, just use points.

3D lines confuse the viewer, so just using a thicker line often works better.

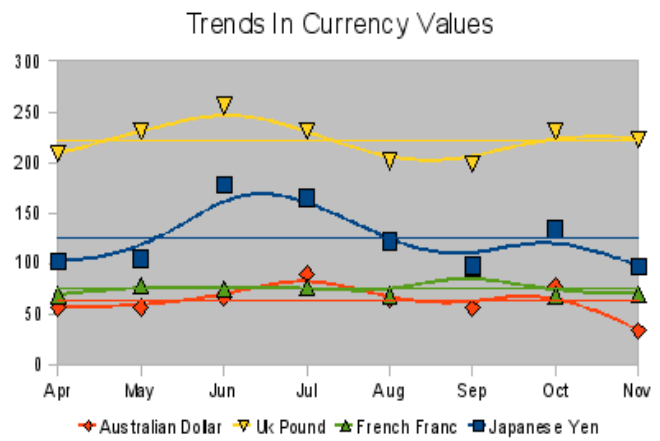
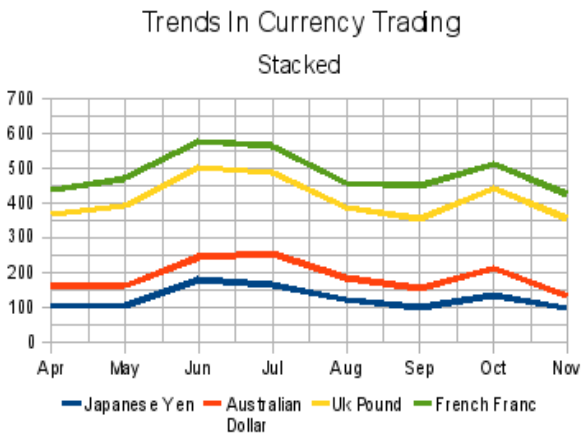


Figure 27: Line charts

Scatter or XY charts

Scatter charts are great for visualizing data that you have not had time to analyze, and they may be the best for data when you have a constant value against which to compare the data; for example, weather data, reactions under different acidity levels, conditions at altitude, or any data which matches two series of numeric data. In contrast to line charts, the x-axis are the left to right labels, which usually indicate a time series.

Scatter charts may surprise those unfamiliar with how they work. While constructing the chart, if you choose **Data Range > Data series in rows**, the first row of data represents the x-axis. The rest of the rows of data are then compared against the first row data. Figure 28 shows a comparison of three currencies with the Japanese Yen. Even though the table presents the monthly series, the chart does not. In fact the Japanese Yen does not appear; it is merely used as the constant series that all the other data series are compared against.

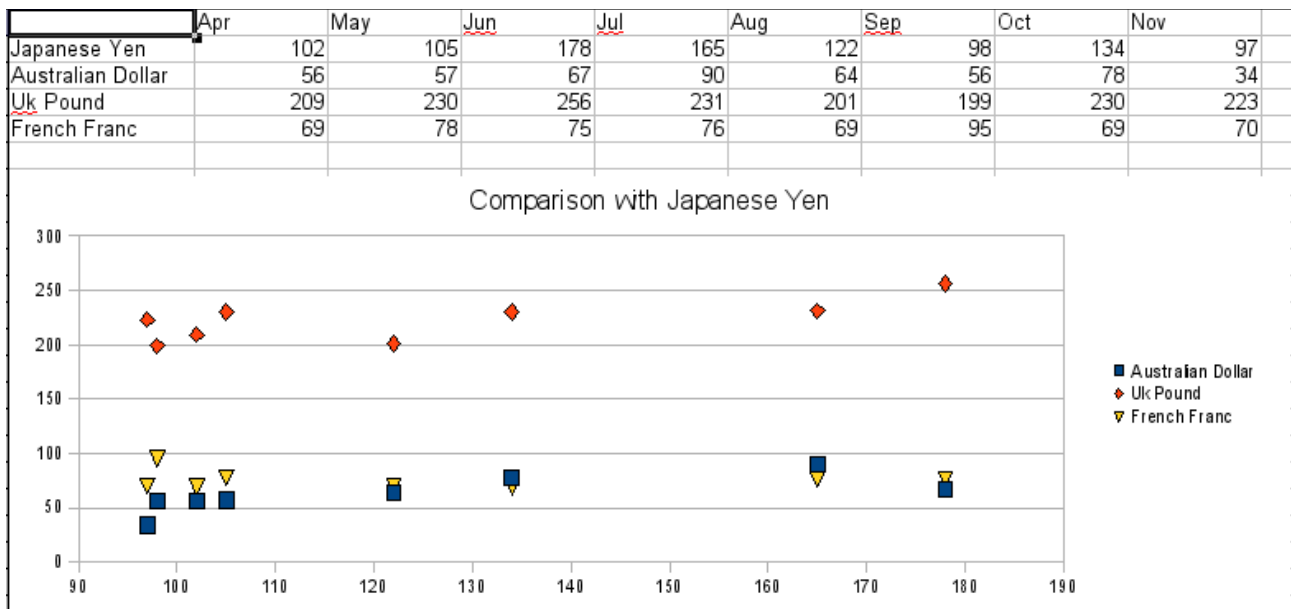


Figure 28: A particularly volatile time in the world currency market.

Bubble charts

A *bubble chart* is a variation of a scatter chart in which the data points are replaced with bubbles. It shows the relations of three variables in two dimensions. Two variables are used for the position on the X-axis and Y-axis, while the third is shown as the relative size of each bubble. One or more data series can be included in a single chart.

Bubble charts are often used to present financial data. The data series dialog for a bubble chart has an entry to define the data range for the bubbles and their sizes.

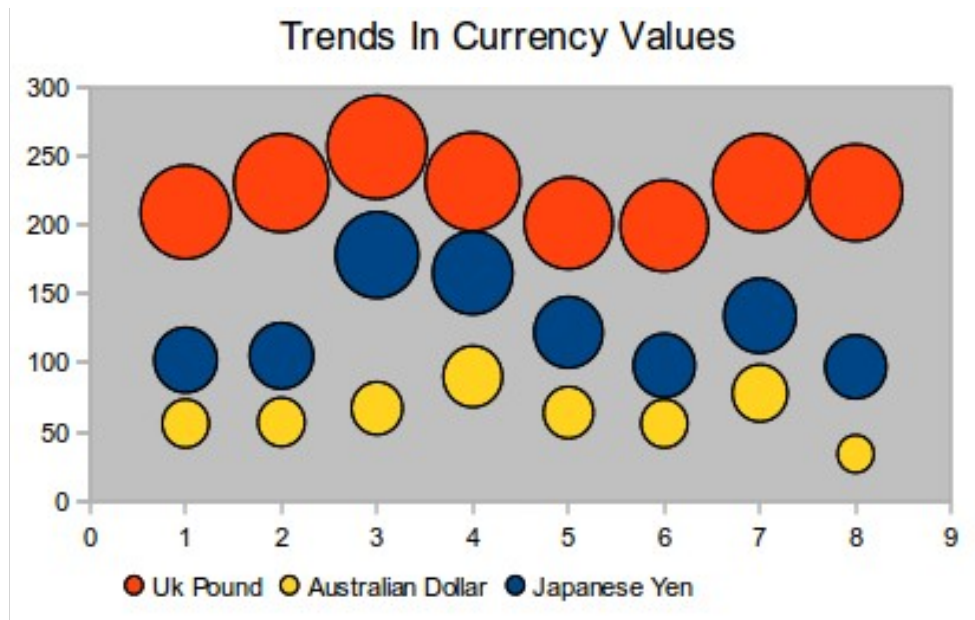


Figure 29: Bubble chart showing three data series

Net charts

A *net chart* is similar to a polar or radar chart. They are useful for comparing data that are not time series, but show different circumstances, such as variables in a scientific experiment or direction. The poles of the net chart are equivalent to the y-axes of other charts. Generally, between three and eight axes are best; any more and this type of chart becomes confusing. Before and after values can be plotted on the same chart, or perhaps expected and real results, so that differences can be compared.

Figure 30 shows two types of net charts:

- (Left): Plain net chart without grids and with just points, no lines.
- (Right): Net chart with lines, points and grid. Axes colors and labels changed. Chart area color = gradient. Points changed to fancy 3D ones.

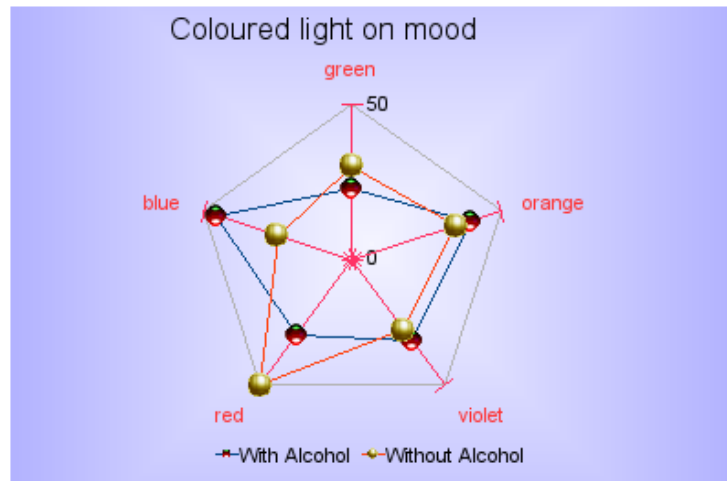
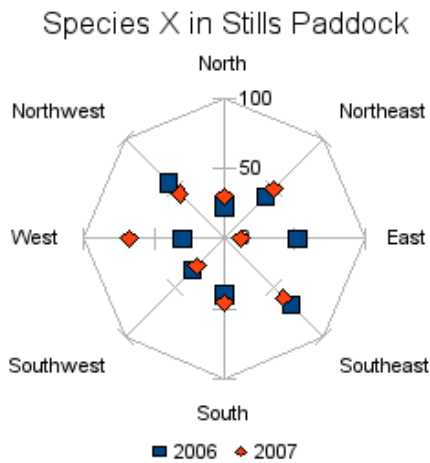


Figure 30: Two net diagrams showing totally fabricated data from totally fictional experiments.

Other varieties of net chart show the data series as stacked numbers or stacked percentages. The series can also be filled with a color (Figure 31). Partial transparency is often best for showing all the series.

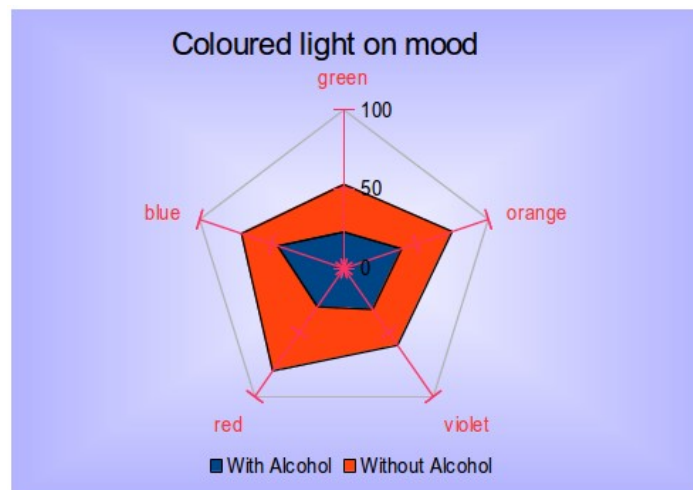


Figure 31: Filled net or radar chart

Stock charts

A *stock chart* is a specialized column graph specifically for stocks and shares. You can choose traditional lines, candlestick, and two-column type charts. The data required for these charts is quite specialized, with series for opening price, closing price, and high and low prices. Of course the x-axis represents a time series.

When you set up a stock chart in the Chart Wizard, the Data Series dialog is very important. You need to tell it which series is for the opening price, closing price, high and low price of the stock and so on. Otherwise the chart may be indecipherable. The sample table for this chapter needed to be changed to fit the data series.

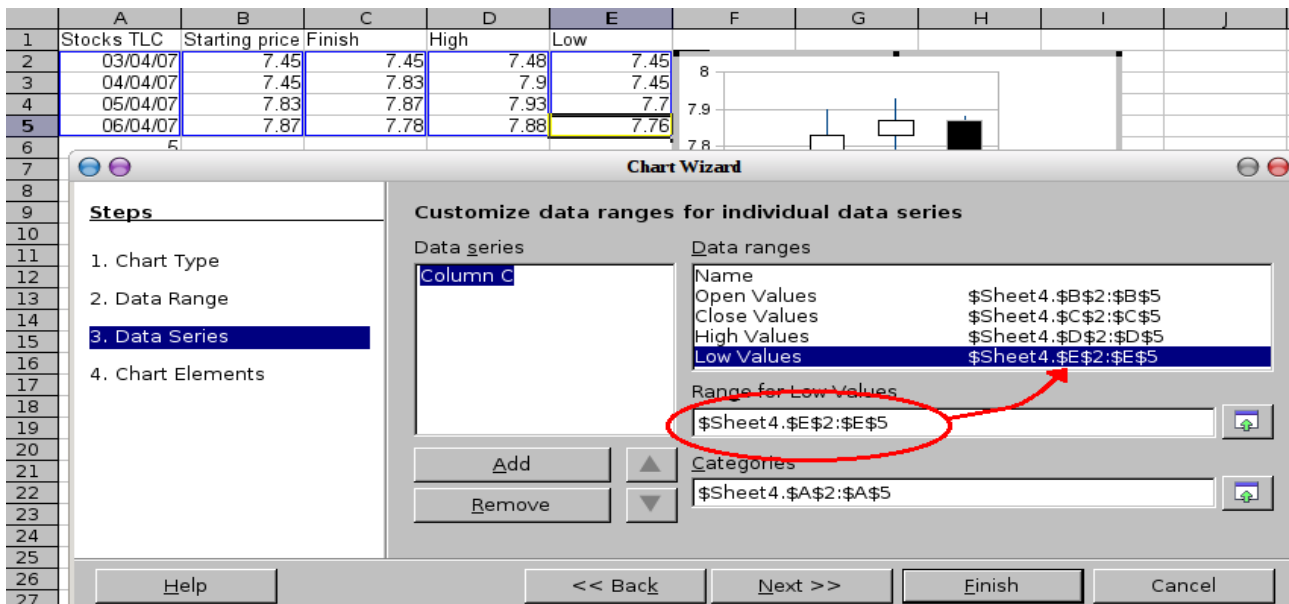


Figure 32: Adjusting data series for stock charts.

A nice touch is that LibreOffice Chart color-codes the rising and falling shares: white for rising and black for falling in the candlestick chart, and red and blue in the traditional line chart.

Column and line charts

A *column and line chart* is a combination of two other chart types. It is useful for combining two distinct but related data series, for example sales over time (column) and the profit margin trends (line).

You can choose the number of columns and lines in the Chart Wizard. So for example you might have two columns with two lines to represent two product lines with the sales figures and profit margins of both.

The chart in Figure 33 has manufacturing cost and profit data for two products, over a period of time (six months in 2007). To create this chart, first highlight the table and start the Chart Wizard. Choose Column and Line chart type with two lines and the data series in rows. Then give it a title to highlight the aspect you want to show. The lines are different colors at this stage and do not reflect the product relationships. When you finish with the Chart Wizard, highlight the chart, click on the line, right-click and chose **Format Data Series**.

On this tab there are a few things to change: The colors should match the products. So both Ark Manufacturing and profit are blue and Prall is red. The lines need to be more noticeable so make the lines thicker by increasing the width to 0.08.

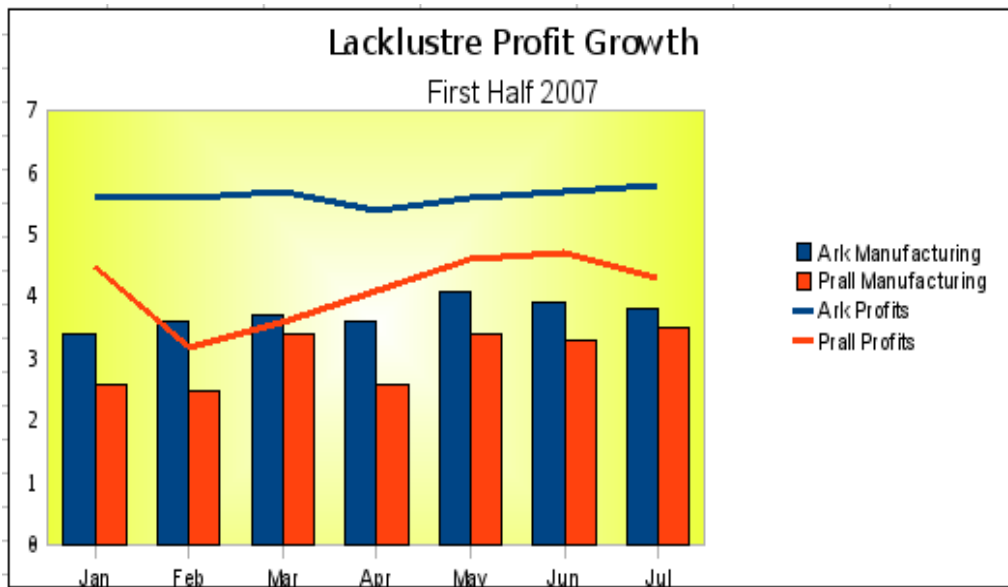


Figure 33: Column and line chart

For the background, highlight the chart wall, right-click and choose **Format Wall**. On the **Area** tab, change the drop-down box to show **Gradient**. Choose one of the preset gradient patterns and make it lighter by going to the **Transparency** tab and making the gradient 50% transparent.

To make the chart look cleaner without the grid, go to **Insert > Grids** and deselect the X-axis option.