



**LibreOffice**  
The Document Foundation

## Writer Guide

# *Chapter 1*

## *Introducing Writer*

## Copyright

---

This document is Copyright © 2012 by its contributors as listed below. You may distribute it and/or modify it under the terms of either the GNU General Public License (<http://www.gnu.org/licenses/gpl.html>), version 3 or later, or the Creative Commons Attribution License (<http://creativecommons.org/licenses/by/3.0/>), version 3.0 or later.

All trademarks within this guide belong to their legitimate owners.

## Contributors

Barbara Duprey	John M. Długosz
Ron Faile Jr.	Hazel Russman
Jean Hollis Weber	John A Smith

## Feedback

Please direct any comments or suggestions about this document to:  
[documentation@global.libreoffice.org](mailto:documentation@global.libreoffice.org)

## Acknowledgments

This chapter is adapted and updated from Chapter 1 of the *OpenOffice 3.3 Writer Guide*. The contributors to that chapter are:

Agnes Belzunce	Daniel Carrera	Laurent Duperval
Stefan A. Keel	Peter Kupfer	Carol Roberts
Joe Sellman	Gary Schnabl	Janet M. Swisher
Jean Hollis Weber	Linda Worthington	Michele Zarri

## Publication date and software version

Published 9 December 2012. Based on LibreOffice 3.6.4.

## Note for Mac users

---

Some keystrokes and menu items are different on a Mac from those used in Windows and Linux. The table below gives some common substitutions for the instructions in this chapter. For a more detailed list, see the application Help.

<b>Windows or Linux</b>	<b>Mac equivalent</b>	<b>Effect</b>
<b>Tools &gt; Options</b> menu selection	<b>LibreOffice &gt; Preferences</b>	Access setup options
<i>Right-click</i>	<i>Control+click</i>	Opens a context menu
<i>Ctrl (Control)</i>	<i>⌘ (Command)</i>	Used with other keys
<i>F5</i>	<i>Shift+⌘+F5</i>	Opens the Navigator
<i>F11</i>	<i>⌘+T</i>	Opens the Styles and Formatting window

# Contents

---

<b>Copyright</b> .....	<b>2</b>
Contributors.....	2
Feedback.....	2
Acknowledgments.....	2
Publication date and software version.....	2
<b>Note for Mac users</b> .....	<b>2</b>
<b>What is Writer?</b> .....	<b>4</b>
<b>Parts of the main Writer window</b> .....	<b>4</b>
Title bar.....	4
Menus.....	5
Toolbars.....	5
Docking (AutoHide).....	7
Right-click (context) menus.....	8
Rulers.....	8
Status bar.....	9
<b>Changing document views</b> .....	<b>11</b>
<b>Starting a new document</b> .....	<b>12</b>
From the Start Center.....	12
From the Quickstarter.....	12
From the operating system menu.....	13
From the menu bar, toolbar, or keyboard.....	13
From a template.....	13
<b>Opening an existing document</b> .....	<b>14</b>
<b>Saving a document</b> .....	<b>15</b>
Saving a document automatically.....	15
Saving as a Microsoft Word document.....	15
<b>Password protection</b> .....	<b>16</b>
Changing the password for a document.....	18
<b>Closing a document</b> .....	<b>18</b>
<b>Closing LibreOffice</b> .....	<b>18</b>
<b>Using the Navigator</b> .....	<b>18</b>
Moving quickly through a document.....	20
Using the Navigation toolbar.....	20
Rearranging chapters using the Navigator.....	21
Setting reminders.....	22
Choosing drag mode.....	22
<b>Undoing and redoing changes</b> .....	<b>22</b>

## What is Writer?

Writer is the word processor component of LibreOffice. In addition to the usual features of a word processor (spelling check, thesaurus, hyphenation, autocorrect, find and replace, automatic generation of tables of contents and indexes, mail merge, and others), Writer provides these important features:

- Templates and styles (see Chapters 6 and 7)
- Page-layout methods, including frames, columns, and tables (Chapter 4)
- Embedding or linking of graphics, spreadsheets, and other objects (Chapter 8)
- Built-in drawing tools (Chapter 8)
- Master documents, to group a collection of shorter documents into a single long document (Chapter 13)
- Change tracking during revisions (Chapter 3)
- Database integration, including a bibliography database (Chapters 11, 12, 15)
- Export to PDF, including bookmarks (Chapter 5)
- And many more

## Parts of the main Writer window

The main Writer workspace is shown in Figure 1. Its features are described in this section.

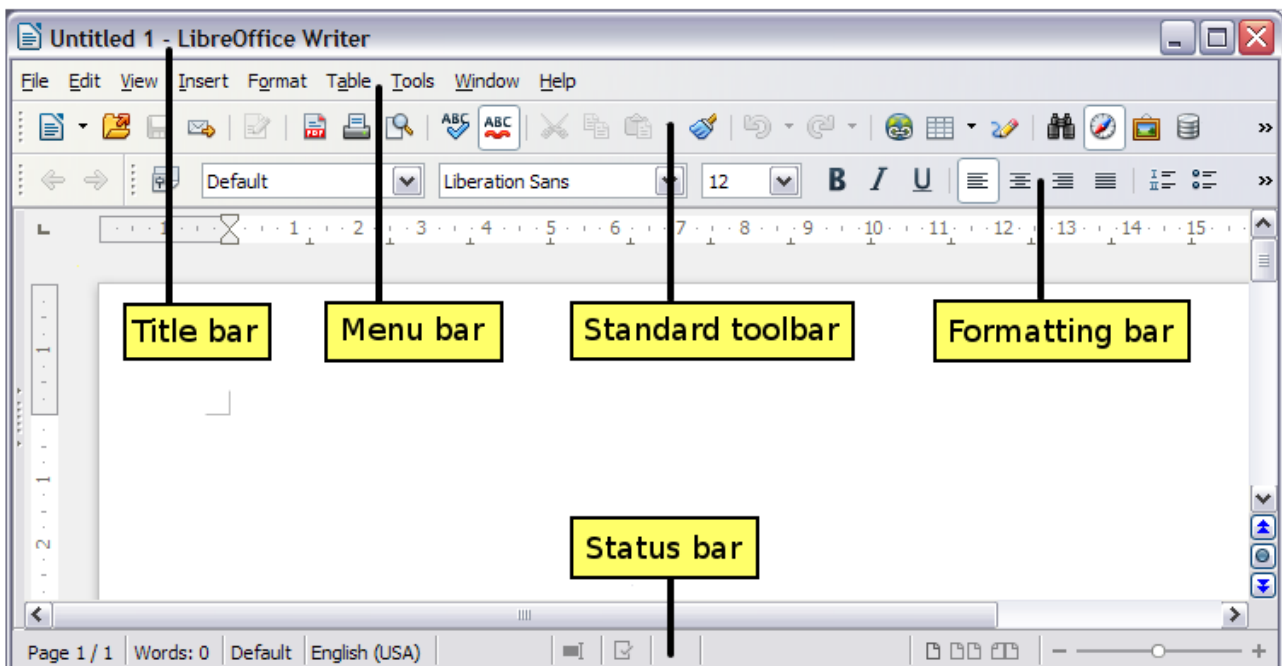


Figure 1: Parts of the main Writer window

### Title bar

The Title bar is located at the top of the Writer window, and shows the file name of the current document. When the document is newly created, the document name will appear as *Untitled X*, where X is a number.

## Menus

The *Menu bar* is located just below the Title bar. When you choose one of the menus listed below, a submenu drops down to show commands.

- **File** contains commands that apply to the entire document such as **Open**, **Save**, **Print**, and **Export as PDF**.
- **Edit** contains commands for editing the document such as **Undo: xxx** (where xxx is the action to undo) and **Find & Replace**. It also contains commands to **Cut**, **Copy**, and **Paste** selected parts of your document.
- **View** contains commands for controlling the display of the document such as **Zoom** and **Web Layout**.
- **Insert** contains commands for inserting elements into your document such as headers, footers, and pictures.
- **Format** contains commands, such as **Styles and Formatting**, **Paragraph**, and **Bullets and Numbering**, for formatting the layout of your document
- **Table** shows all commands to insert and edit a table in a text document.
- **Tools** contains functions such as **Spelling and Grammar**, **Customize**, and **Options**.
- **Window** contains commands for the display window.
- **Help** contains links to the LibreOffice Help file, **What's This?**, and information about the program. See the Preface to this book for more information.

## Toolbars

Writer has several types of toolbars: docked (fixed in place), floating, and tear-off. Docked toolbars can be moved to different locations or made to float, and floating toolbars can be docked.

The top docked toolbar, just under the Menu bar, is called the *Standard* toolbar. It is consistent across all the LibreOffice applications (Writer, Calc, Draw, Impress).

The second toolbar at the top is the *Formatting* bar. It is context-sensitive; that is, it shows the tools relevant to the cursor's current position or selection. For example, when the cursor is on a graphic, the Formatting bar provides tools for formatting graphics; when the cursor is in text, the tools are for formatting text.

### Displaying or hiding toolbars

To display or hide toolbars, choose **View > Toolbars**, then click on the name of a toolbar in the list. An active toolbar shows a check mark beside its name. Tear-off toolbars are not listed in the View menu.

### Submenus and tear-off toolbars

Toolbar icons with a small triangle to the right will display *submenus*, *tear-off toolbars*, and other ways of selecting things, depending on the tool.

Figure 2 shows a tear-off toolbar from the Drawing toolbar.

Tear-off toolbars can be floating or docked along an edge of the screen or in one of the existing toolbar areas. To move a floating tear-off toolbar, drag it by the title bar, as shown in Figure 4.

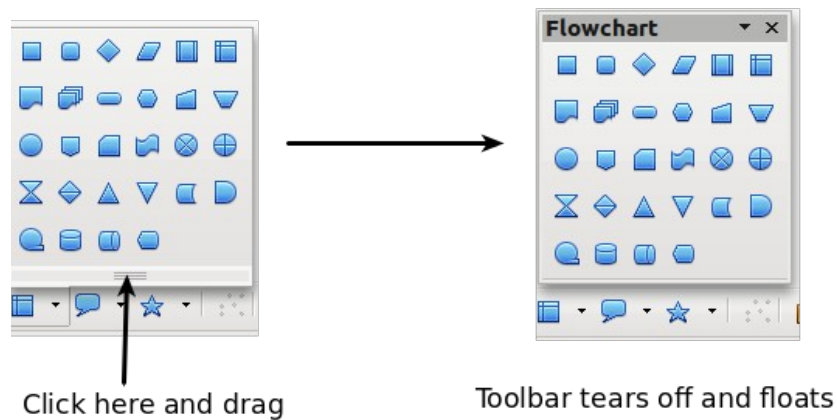


Figure 2: Example of a tear-off toolbar

### Moving toolbars

To move a docked toolbar, place the mouse pointer over the toolbar handle (the small vertical bar to the left of the toolbar), hold down the left mouse button, drag the toolbar to the new location, and then release the mouse button.

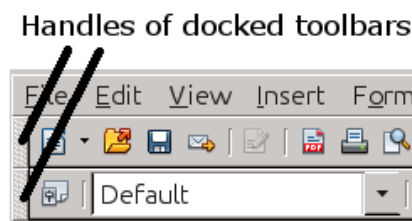


Figure 3: Moving a docked toolbar

To move a floating toolbar, click on its title bar and drag it to a new location.



Figure 4: Moving a floating toolbar

### Floating toolbars

Writer includes several additional context-sensitive toolbars, whose defaults appear as floating toolbars in response to the cursor's current position or selection. For example, when the cursor is in a table, a floating Table toolbar appears, and when the cursor is in a numbered or bullet list, the Bullets and Numbering toolbar appears. You can dock these toolbars to the top, bottom, or side of the window, if you wish (see "Moving toolbars" above).

### Docking/floating windows and toolbars

Toolbars and some windows, such as the Navigator and the Styles and Formatting window, are dockable. You can move, resize, or dock them to an edge.

To dock a window or toolbar, hold down the *Control* key and double-click on the frame of the floating window (or in a vacant area near the icons at the top of the floating window) to dock it in its last position.

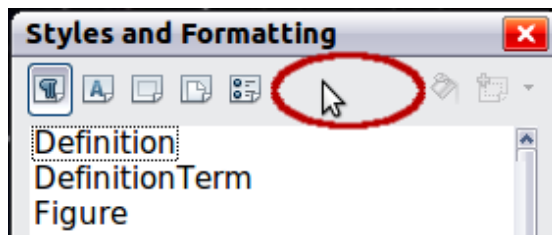


Figure 5: Control+click to dock or undock

To undock a window, hold down the *Control* key and double-click on the frame (or a vacant area near the icons at the top) of the docked window.

## Docking (AutoHide)

On any window edge where another window is docked you will see a button which allows you to show or hide the window.

- If you click the button on the window edge to show the window, the window will remain visible until you manually hide it again (with the same button).
- If you show the window by clicking the window border, but not the button, you activate the **AutoHide** function. The AutoHide function allows you to temporarily show a hidden window by clicking on its edge. When you click in the document, the docked window hides again.

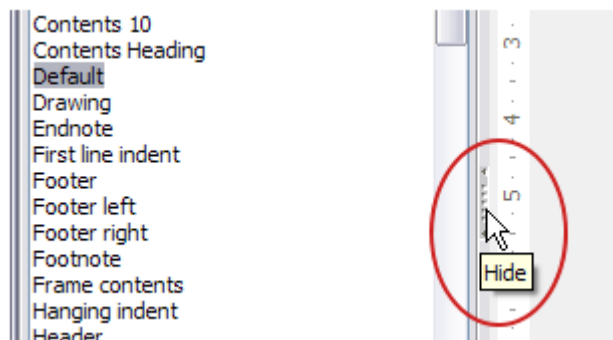


Figure 6: The Hide button

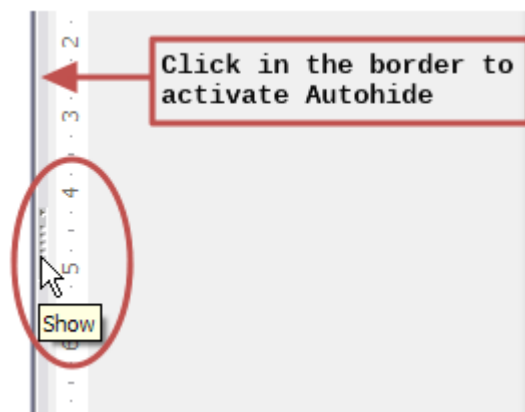


Figure 7: Show button and Autohide

## Customizing toolbars

You can customize toolbars in several ways, including choosing which icons are visible and locking the position of a docked toolbar.

To access a toolbar's customization options, right-click between the icons on the toolbar. A menu drops down.

To show or hide icons defined for the selected toolbar, choose **Visible Buttons** from the drop-down menu. Visible icons are indicated by a border around the icon (Figure 8) or by a check mark beside the icon, depending on your operating system. Click on icons to hide or show them on the toolbar.

You can also add icons and create new toolbars, as described in Chapter 16, Customizing Writer.

### Note

In earlier versions of LibreOffice, these options were accessed by clicking on an arrow at the end of the toolbar. The arrow is still present on floating toolbars, but not on docked ones. However, the arrow has no effect.

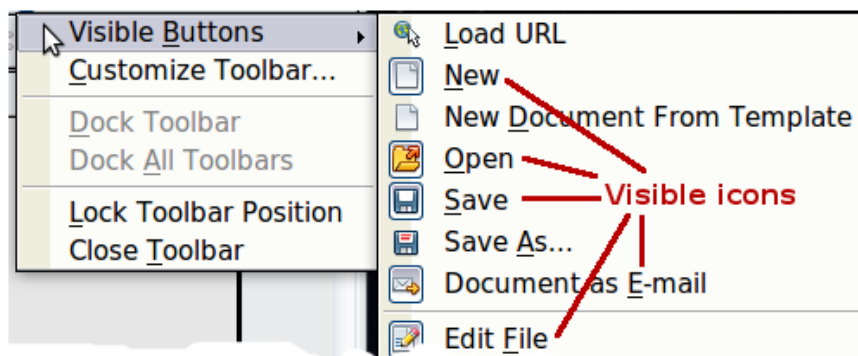


Figure 8: Selection of visible toolbar icons

## Right-click (context) menus

Right-click on a paragraph, graphic, or other object to open a context menu. Often the context menu is the fastest and easiest way to reach a function. If you're not sure where in the menus or toolbars a function is located, you can often find it by right-clicking.

## Rulers

Rulers are enabled by default. To show or hide the rulers, choose **View > Ruler**. To disable the rulers, choose **Tools > Options > LibreOffice Writer > View** and deselect either or both rulers.

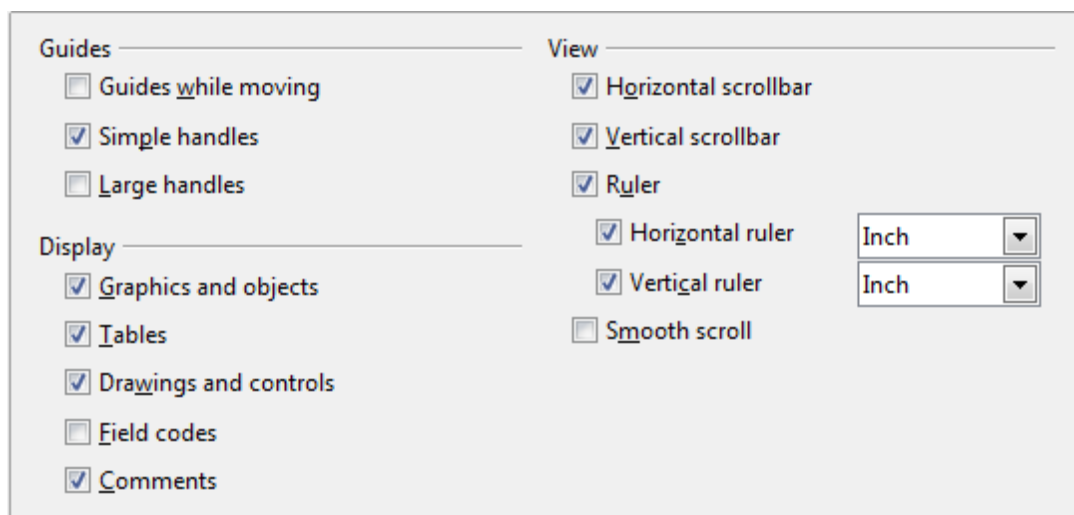


Figure 9. Accessing the ruler settings



## Status bar

The Writer status bar is located at the bottom of the workspace. It provides information about the document and convenient ways to quickly change some document features.

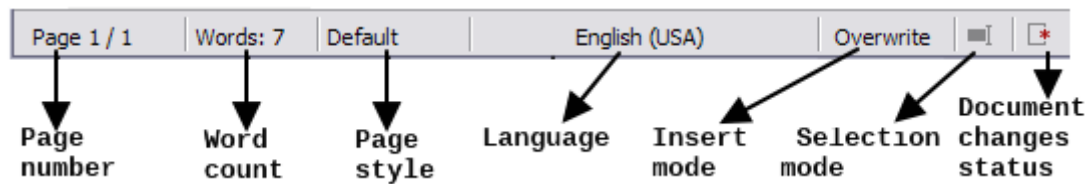


Figure 10: Left end of Status bar

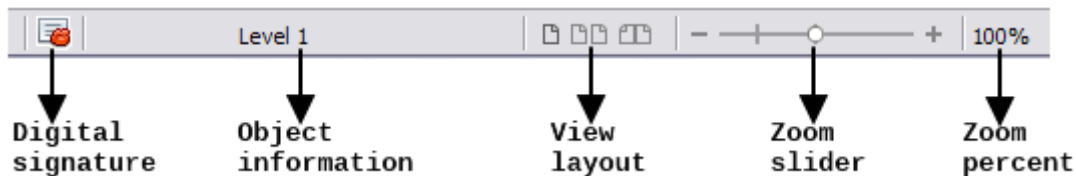


Figure 11: Right end of Status bar

### Page number

Shows the current page number, the sequence number of the current page (if different), and the total number of pages in the document. For example, if you restarted page numbering at 1 on the third page, its page number is 1 and its sequence number is 3.

If any bookmarks have been defined in the document, a right-click on this field pops up a list of bookmarks; click on the required one.

To jump to a specific page in the document, double-click on this field. The Navigator opens (see page 18). Click in the **Page Number** field in the Navigator, type the *sequence* number of the required page, and press *Enter*.

### Word count

The word count is shown in the status bar, and is kept up to date as you edit. Any text selected in the document will be counted and displayed alongside the total count.

Words: 30 Selected: 6

To display extended statistics such as character count, double-click the word count in the status bar, or choose **Tools > Word Count**.

### Page style

Shows the style of the current page. To change the page style, right-click on this field. A list of page styles pops up; choose a different style by clicking on it.

To edit the current page style, double-click on this field. The Page Style dialog box opens. See Chapters 6 and 7 for more information about styles.

### Language

Shows the language for the selected text.

Click to open a menu where you can choose another language for the selected text or for the paragraph where the cursor is located. You can also choose **None (Do not check spelling)** to exclude the text from a spelling check or choose **More...** to open the Character dialog box. See Chapter 3, Working with Text, for more information.

### Insert mode

This area is blank when in Insert mode. Double-click to change to *Overwrite* mode; single-click to return to Insert mode. In Insert mode, any text after the cursor position moves forward to make room for the text you type; in Overwrite mode, text after the cursor position is replaced by the text you type. This feature is disabled when in **Edit > Changes > Record** mode.

## Selection mode

Click to choose different selection modes. The icon does not change, but when you hover the mouse pointer over this field, a tooltip indicates which mode is active.



When you click in the field, a context menu displays the available options.

<b>Mode</b>	<b>Effect</b>
Standard selection	Click in the text where you want to position the cursor; click in a cell to make it the active cell. Any other selection is then deselected.
Extending selection ( <i>F8</i> )	Clicking in the text extends or crops the current selection.
Adding selection ( <i>Shift+F8</i> )	A new selection is added to an existing selection. The result is a multiple selection.
Block selection ( <i>Ctrl+Shift+F8</i> )	A block of text can be selected.


On Windows systems, you can hold down the *Alt* key while dragging to select a block of text. You don't need to enter the block selection mode.

See Chapter 3, Working with Text, for more information about these modes.

## Document changes status

The icon that is displayed here changes from this one  if the document has no unsaved changes, to this one  if it has been edited and the changes have not been saved.

## Digital signature

If the document has been digitally signed, this icon  is displayed here; otherwise, it is blank. To view the certificate, double-click the icon.

## Section or object information

When the cursor is in a section, heading, or list item, or when an object (such as a picture or table) is selected, information about that item appears in this field. Double-clicking in this area opens a relevant dialog box.

<b>Object</b>	<b>Information shown</b>	<b>Dialog box opened</b>
Picture	Size and position	Picture
List item	Level and list style	Bullets and Numbering <sup>1</sup>
Heading	Outline numbering level	Bullets and Numbering <sup>1</sup>
Table	Name or number and cell reference of cursor	Table Format
Section	Name of section	Edit Sections
Other	(Blank)	Fields

## View layout

Click an icon to change between single page, side-by-side, and book layout views. You can edit the document in any view. Zoom settings (see below and next page) interact with the selected view layout and the window width to determine how many pages are visible in the document window.

---

<sup>1</sup> If a *list style* was used with a list item or heading, no dialog box appears.

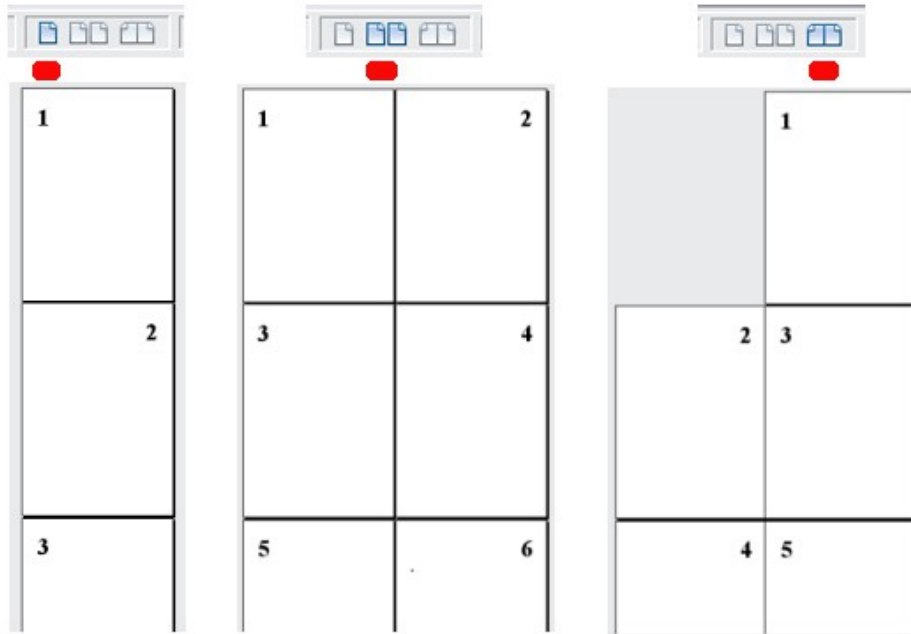


Figure 12. View layouts: single, side-by-side, book

### Zoom

To change the view magnification, drag the Zoom slider, or click on the + and – signs, or right-click on the zoom level percent to pop up a list of magnification values from which to choose.



## Changing document views

Writer has three ways to view a document: *Print Layout*, *Web Layout*, and *Full Screen*. To change the view, go to the **View** menu and click on the required view.

Print Layout is the default view in Writer. In this view, you can use the Zoom slider and the View Layout icons on the Status bar to change the magnification.

You can also choose **View > Zoom** from the menu bar to display the Zoom & View Layout dialog box, where you can set the same options as on the Status bar.

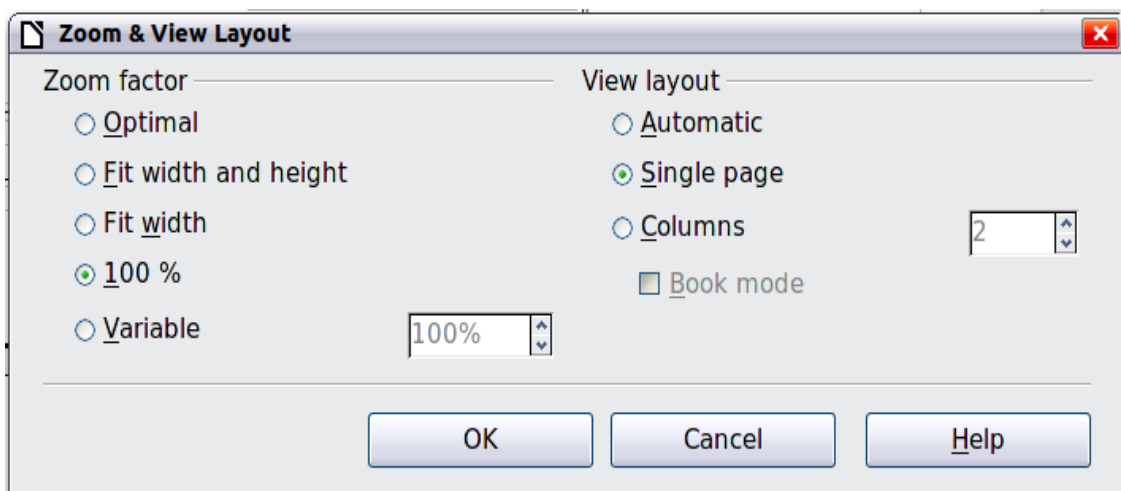


Figure 13. Choosing Zoom and View Layout options

In Web Layout view, you can use only the Zoom slider; the View Layout buttons on the Status bar are disabled, and most of the choices on the Zoom & View Layout dialog box are not available.

In Full Screen view, the document is displayed using the zoom and layout settings previously selected. To exit Full Screen view and return to either Print or Web Layout view, press the *Esc* key or click the **Full Screen** icon in the top left-hand corner. You can also use *Ctrl+Shift+J* to enter or exit Full Screen view.

## Starting a new document

---

You can start a new, blank document in Writer in several ways. If a document is already open in LibreOffice, the new document opens in a new window.

### From the Start Center

When LibreOffice is open but no document is open (for example, if you close all the open documents but leave the program running), the **Start Center** is shown. Click one of the icons to open a new document of that type, or click the **Templates** icon to start a new document using a template.



Figure 14: LibreOffice Start Center

### From the Quickstarter

The Quickstarter is found in Windows, some Linux distributions, and (in a slightly different form) in Mac OS X. The Quickstarter is an icon that is placed in the system tray or the dock during system startup. It indicates that LibreOffice has been loaded and is ready to use. The Quickstarter must be enabled in **Tools > Options > LibreOffice > Memory** by selecting the checkbox.

Right-click the **Quickstarter** icon (Figure 15) in the system tray to open a pop-up menu from which you can open a new document, open the Templates and Documents dialog box, or choose an existing document to open. You can also double-click the **Quickstarter** icon to display the Templates and Documents dialog box.

See Chapter 1, *Introducing LibreOffice*, in the *Getting Started* guide for more information about starting Writer and using the Quickstarter.

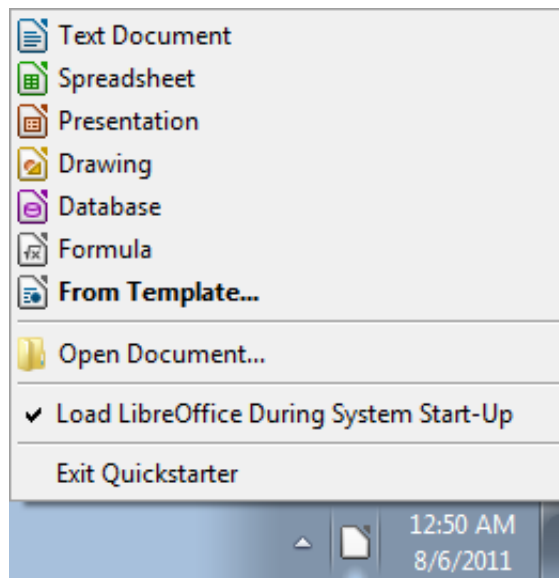


Figure 15: Quickstarter pop-up menu

## From the operating system menu

You can open LibreOffice from the operating system menu in the same way that you start other programs. When LibreOffice was installed on your computer, in most cases a menu entry for each component was added to your system menu. If you are using a Mac, you should see the LibreOffice icon in the Applications folder. When you double-click this icon, LibreOffice opens at the Start Center (Figure 14).

## From the menu bar, toolbar, or keyboard

When LibreOffice is open, you can also start a new document in one of the following ways.

- Press the *Ctrl+N* keys.
- Use **File > New > Text Document**.
- Click the **New** button on the Standard toolbar.

## From a template

You can use templates to create new documents in Writer. A template is a set of predefined styles and formatting. Templates serve as the foundation of a set of documents, to make sure they all have a similar layout. For example, all the documents of the *Writer Guide* are based on the same template. As a result, all the documents look alike; they have the same headers and footers, use the same fonts, and so on.

A new LibreOffice installation does not contain many templates. It is possible for you to add new templates to your installation and use them for new documents. This is explained in Chapter 10, Working with Templates. More templates can be downloaded from <http://templates.libreoffice.org/> and other websites.

Once you have templates on your system, you can create new documents based on them by using **File > New > Templates and Documents**. This opens a window where you can choose the template you want to use for your document.

The example shown in Figure 16 uses a template in the My Templates folder. Select it, then click the **Open** button. A new document is created based on the styles and formats defined in the template.

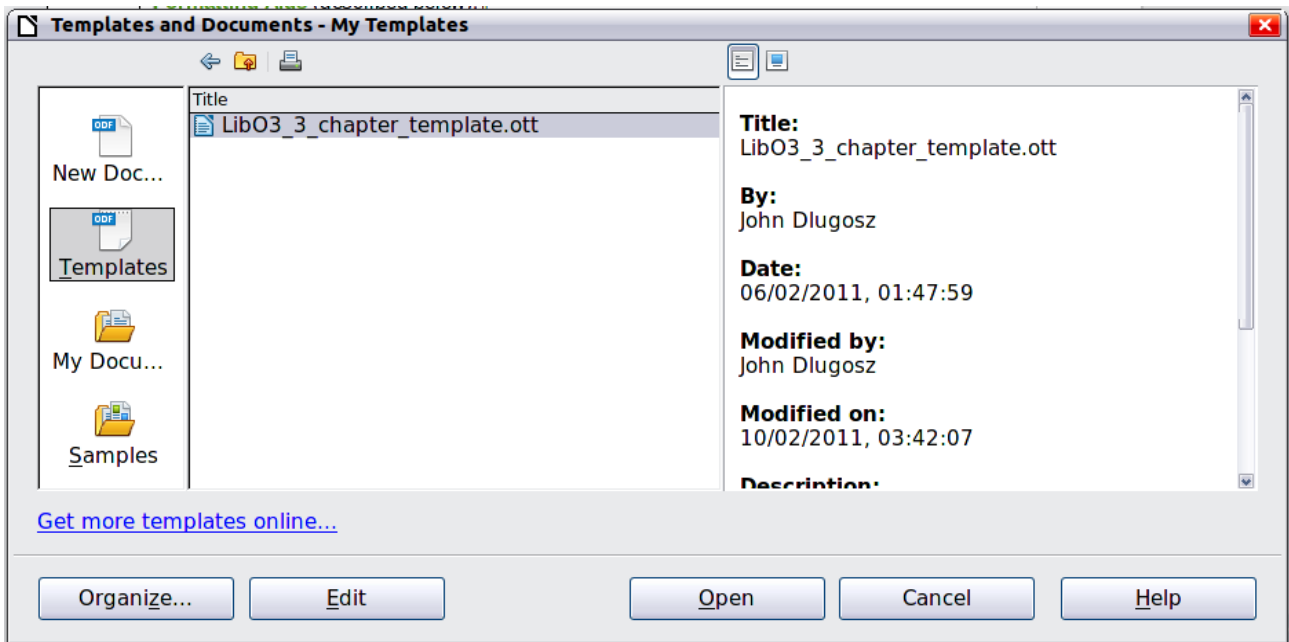
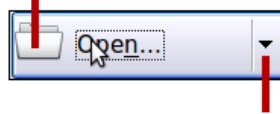


Figure 16. Creating a document from a template

## Opening an existing document

When no document is open, the **Start Center** (Figure 14) provides an icon for opening an existing document or choosing from a list of recently-edited documents.

Open a file browser



Open a list of recently edited documents

You can also open an existing document in one of the following ways. If a document is already open in LibreOffice, the second document opens in a new window.

- Choose **File > Open**.
- Click the **Open** button on the Standard toolbar.
- Press *Control+O* on the keyboard.
- Use the **Open Document** or **Recent Documents** selections on the Quickstarter.

In each case, the Open dialog box appears. Select the file you want, and then click **Open**. If a document is already open in LibreOffice, the second document opens in a new window.

In the Open dialog box, you can reduce the list of files by selecting the type of file you are looking for. For example, if you choose **Text documents** as the file type, you will only see documents Writer can open (including \* .odt, \* .doc, \* .txt). This method opens Word (\* .doc and \* .docx) files as well as LibreOffice files and other formats.

You can also open an existing Writer document using the same methods you would use to open any document in your operating system.

If you have associated Microsoft Office file formats with LibreOffice, you can also open these files by double-clicking on them.

## Saving a document

---

To save a new document in Writer, do one of the following:

- Press *Control+S*.
- Choose **File > Save**.
- Click the **Save** button on the Standard toolbar.

When the Save As dialog box appears, enter the file name, verify the file type, and click **Save**.

To save an opened document with the current file name, choose **File > Save**. This will overwrite the last saved state of the file.

To save an opened document with a different file name in order to preserve the original and have edits saved in another version, choose **File > Save As**, give it another name and/or select a different file type. A document can be saved with the same file name if the file type is changed, but must have a different name if the same file type is retained.

### Saving a document automatically

You can choose to have Writer save your document automatically in a temporary file at regular intervals. Automatic saving, like manual saving, overwrites the last saved state of the target file in the temporary file. To set up automatic file saving:

- 1) Select **Tools > Options > Load/Save > General**.
- 2) Click on **Save AutoRecovery information every** and set the time interval. The default value is 15 minutes. Enter the value you want by typing it or by pressing the up or down arrow keys.

### Saving as a Microsoft Word document

If you need to exchange files with users of Microsoft Word who are unwilling or unable to receive \*.odt files, you can save a document as a Microsoft Word file.

- 1) **Important**—First save your document in the file format used by LibreOffice Writer, \*.odt. If you do not, any changes you made since the last time you saved will only appear in the Microsoft Word version of the document.
- 2) Then click **File > Save As**.
- 3) On the Save As dialog box, in the **File type** (or **Save as type**) drop-down menu, select the type of Word format you need. You may also choose to change the file name.
- 4) Click **Save**.

From this point on, *all changes you make to the document will occur only in the new (Microsoft Word) document*. You have changed the name and file type of your document. If you want to go back to working with the \*.odt version of your document, you must open it again.

#### Tip

To have Writer save documents by default in the Microsoft Word file format, go to **Tools > Options > Load/Save > General**. In the section named *Default file format and ODF settings*, under **Document type**, select **Text document**, then under *Always save as*, select your preferred file format.

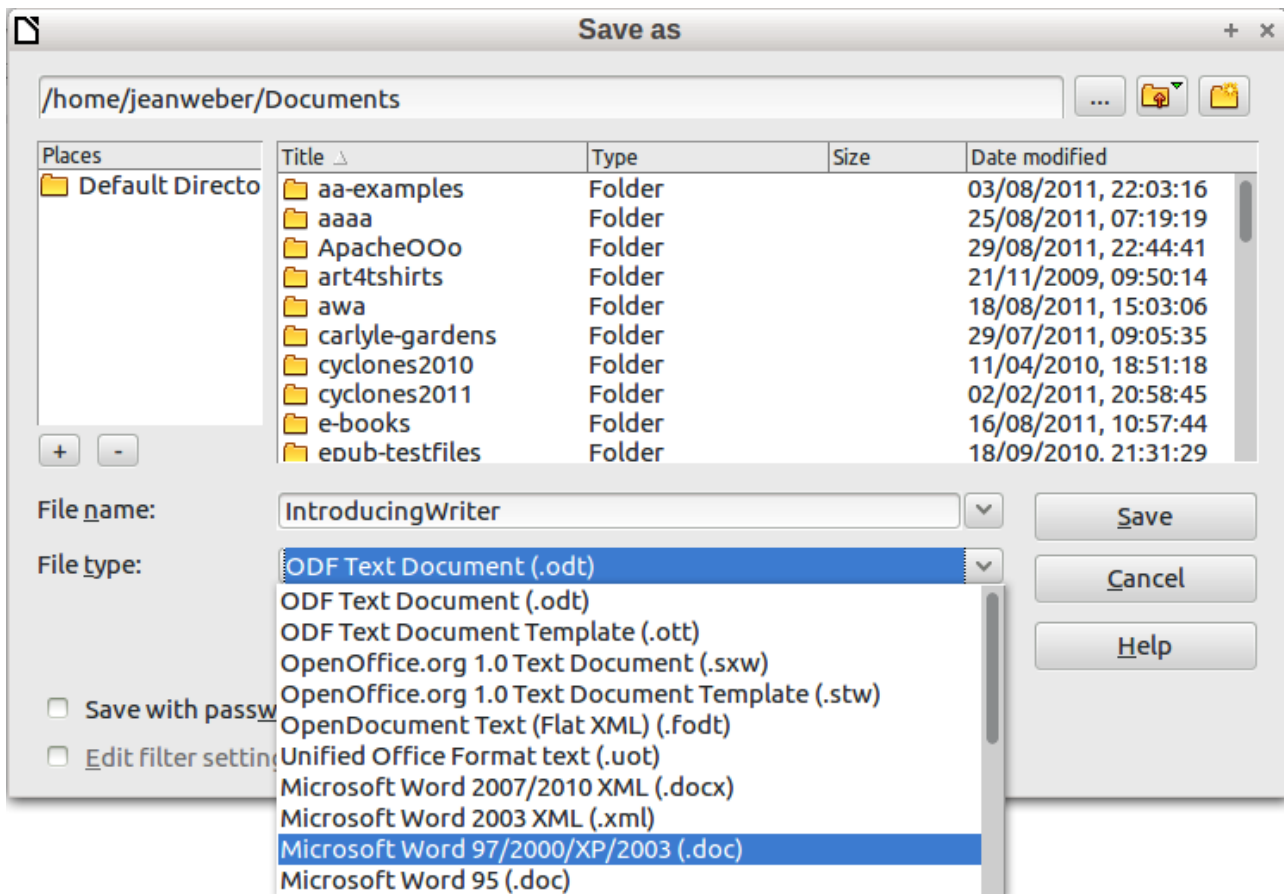
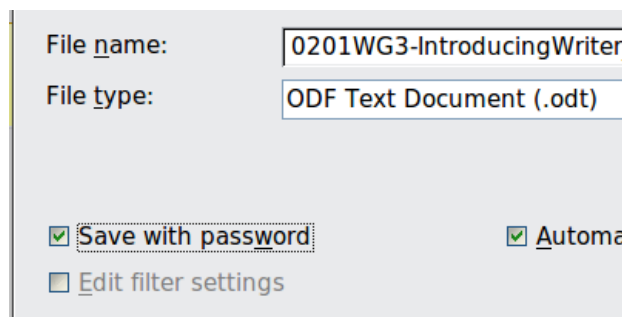


Figure 17. Saving a file in Microsoft Word format

## Password protection

Writer provides two levels of document protection: read-protect (file cannot be viewed without a password) and write-protect (file can be viewed in read-only mode but cannot be changed without a password). Thus you can make the content available for reading by a selected group of people and for reading and editing by a different group. This behavior is compatible with Microsoft Word file protection.

- 1) Use **File > Save As** when saving the document. (You can also use **File > Save** the first time you save a new document.)
- 2) On the Save As dialog box, select the **Save with password** option, and then click **Save**.



- 3) The Set Password dialog box opens.





Figure 18: Two levels of password protection

Here you have several choices:

- To read-protect the document, type a password in the two fields at the top of the dialog box.
  - To write-protect the document, click the **More Options** button and select the **Open file read-only** checkbox.
  - To write-protect the document but allow selected people to edit it, select the **Open file read-only** checkbox and type a password in the two boxes at the bottom of the dialog box.
- 4) Click **OK** to save the file. If either pair of passwords do not match, you receive an error message. Close the message box to return to the Set Password dialog box and enter the password again.

In LibreOffice 3.5, a different, more often used encryption (AES) was introduced to replace the previously used one (Blowfish). In consequence, files encrypted with LibreOffice 3.5 or later can not be opened by LibreOffice 3.4.4 and earlier. LibreOffice 3.4.5 enables you to open those files. However, on saving again in LibreOffice 3.4.5, the old encryption will be used. Files with the old encryption of course can be used in LibreOffice 3.5.0 and later.

### Caution



LibreOffice uses a very strong encryption mechanism that makes it almost impossible to recover the contents of a document if you lose the password.

## Changing the password for a document

When a document is password-protected, you can change the password while the document is open. Choose **File > Properties > General** and click the **Change Password** button.

## Closing a document

---

To close a document, choose **File > Close** or click the **Close** icon on the document window. The appearance and placement of this icon varies with your operating system, but it typically looks like the X in the red box shown in Figure 19.

If more than one LibreOffice window is open, each window looks like the sample shown on the left in Figure 19. Closing this window leaves the other LibreOffice windows open.

If only one LibreOffice window is open, it looks like the sample shown on the right in Figure 19. Notice the small black X below the larger X in the red box. Clicking the small black X closes the document but leaves LibreOffice open. Clicking the larger X closes LibreOffice completely.



Figure 19. Close icons

If the document has not been saved since the last change, a message box is displayed. Choose whether to save or discard your changes.

- **Save:** The document is saved and then closed.
- **Discard:** The document is closed, and all modifications since the last save are lost.
- **Cancel:** Nothing happens, and you return to the document.

## Closing LibreOffice

---

To close LibreOffice completely, click **File > Exit**, or close the last open document as described in “Closing a document” above.


If all the documents have been saved, Writer closes immediately. If any documents have been modified but not saved, a warning message appears. Follow the procedure in “Closing a document” to save or discard your changes.

## Using the Navigator

---

In addition to the Page Number field on the Status bar (described on page 9), Writer provides other ways to move quickly through a document and find specific items by using the many features of the Navigator, the Navigation toolbar, and related icons.

The Navigator lists all of the headings, tables, text frames, graphics, bookmarks, and other objects contained in a document.

To open the Navigator, click its icon  on the Standard toolbar, or press *F5*, or choose **View > Navigator** on the menu bar, or double-click on the Page number field on the status bar. You can dock the Navigator to either side of the main Writer window or leave it floating (see “Docking/floating windows and toolbars” on page 6).

To hide the list of categories and show only the icons at the top, click the **List Box On/Off** icon



. Click this icon again to show the list. Click the + sign or triangle by any of the lists to display the contents of the list.

Table 1 summarizes the functions of the icons at the top of the Navigator.

**Note**

The Navigator has different functions in a master document. See Chapter 13, Working with Master Documents.

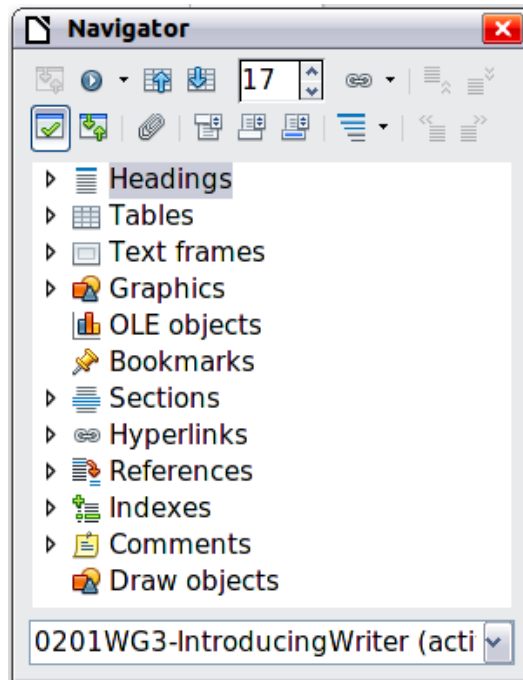


Figure 20. The Navigator

Table 1: Function of icons in the Navigator

	<p>Toggle: Not active in ordinary documents (left image). In a master document (right image), switches between the master document file and its subdocuments.</p>
	<p>Navigation: Opens the Navigation toolbar (see page 20).</p>
	<p>Previous, Next: Jumps to the previous or next item in the selected category (page, graphic, hyperlink, comment, and so on). To select the category of items, see “Using the Navigation toolbar” on page 20.</p>
	<p>Page number: Jumps to the page sequence number showing in the box. Type the required page number or select it using the up and down arrows.</p>
	<p>Drag Mode: Select Hyperlink, Link, or Copy. See “Choosing drag mode” on page 22 for details.</p>
	<p>List Box On/Off: Shows or hides the list of categories.</p>
	<p>Content View: Switches between showing all categories and showing only the selected category.</p>



Set Reminder: Inserts a reminder (see page 22).



Header/Footer: Jumps between the text area and the header or footer area (if the page has them).



Anchor <-> Text: Jumps between a footnote anchor and the corresponding footnote text.



Heading Levels Shown: Choose the number of heading levels to be shown.

## Moving quickly through a document

The Navigator provides several convenient ways to move around a document and find items in it:

- To jump to a specific page in the document, type its *sequence* number in the box at the top of the Navigator and press *Enter*. The sequence number may be different from the page number if you have restarted numbering at any point.
- When a category is showing the list of items in it, double-click on an item to jump directly to that item's location in the document. For example, you can jump directly to a selected heading, graphic, or comment by using this method.

To see the content in only one category, highlight that category and click the **Content View** icon. Click the icon again to display all the categories. You can also change the number of heading levels shown when viewing Headings.

- Use the **Previous** and **Next** icons to jump to other objects of the type selected in the Navigation toolbar. (See next page for details.)

### Note


A hidden section (or other hidden object) in a document appears gray in the Navigator, and displays the word "hidden" as a tooltip. For more about hidden sections, see Chapter 4, Formatting Pages.

### Tip

Objects are much easier to find if you have given them names when creating them, instead of keeping LibreOffice's default names of graphics1, graphics2, Table1, Table2, and so on—which may not correspond to the position of the object in the document.

To rename an image, right-click on the image, select **Picture > Options**, and then edit the name in the dialog box. Similarly, to rename a table, right-click on the table, select **Table > Table**, and then edit the name.

## Using the Navigation toolbar

To display the **Navigation** toolbar (Figure 21), click the **Navigation** icon  (second icon from the left at the top of the **Navigator**, Figure 20) or the small **Navigation** icon near the lower right-hand corner of the document window below the vertical scroll bar (Figure 22).

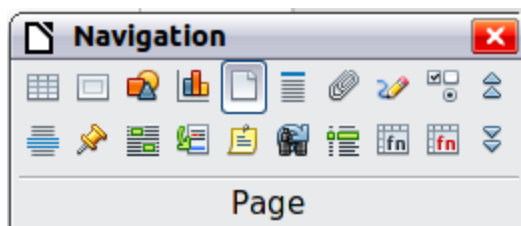


Figure 21: Navigation toolbar

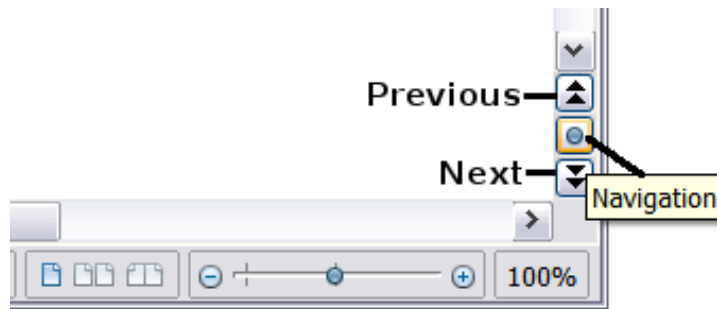


Figure 22: Previous, Navigation, and Next icons

The Navigation toolbar shows icons for all the object types shown in the Navigator, plus some extras (for example, the results of a **Find** command).

Click an icon to select that object type. Now all the **Previous** and **Next** icons (in the Navigator itself, in the Navigation toolbar, and on the scroll bar) will jump to the previous or next object of the selected type. This is particularly helpful for finding items like index entries, which can be difficult to see in the text. The names of the icons (shown in the tooltips) change to match the selected category; for example, **Next Graphic**, **Next Bookmark**, or **Continue search forward**.

## Rearranging chapters using the Navigator

You can rearrange chapters and move headings in the document by using the Navigator.

- 1) Click the **Content View** icon to expand the headings, if necessary.
- 2) (Optional) If you have several subheading levels, you can more easily find the headings you want, by changing the Heading Levels Shown selection to show only 1 or 2 levels of headings.
- 3) Click on the heading of the block of text that you want to move and drag the heading to a new location on the Navigator, or click the heading in the Navigator list, and then click either the **Promote Chapter** or **Demote Chapter** icon. All of the text and subsections under the selected heading move with it.

To move only the selected heading and not the text associated with the heading, hold down *Control*, and then click the **Promote** or **Demote** icon.

### Tip

The tooltips **Promote Chapter** and **Demote Chapter** can be misleading; all headings—whether at Level 1 (chapter) or lower—can be rearranged using this function; and the feature might be better described as Move Up or Move Down (within the document, without changing the heading level) to distinguish it more clearly from **Promote Level** and **Demote Level**, which change the heading level within the document (see below).

- 4) To quickly change the outline level of a heading and its associated subheadings, select the heading in the Navigator, and then click either the **Promote Level** or **Demote Level** icon. This action does not change the location of the heading, only its level.

To increase the outline level of only the selected heading, but not its associated subheadings, hold down *Control*, and then click the icon.

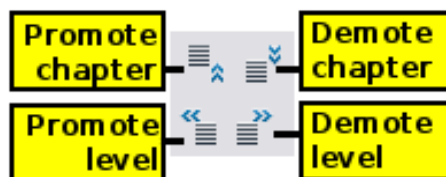



Figure 23. Reorganizing with the Navigator

## Note

Users of MS Office Word will note the similarity between this functionality and Word's Outline View.

## Setting reminders

One of the little-known features of Writer that you may find quite useful is the possibility of jumping between reminders. *Reminders* let you mark places in your document that you want to return to later on, to add or correct information, make some other change, or simply mark where you finished editing. The possible uses of reminders are limited only by your imagination.

To set a reminder at the cursor's current location, click on the  icon in the Navigator. You can set up to 5 reminders in a document; setting a sixth causes the first to be deleted.

Reminders are not highlighted in any way in the document, so you cannot see where they are, except when you jump from one to the next—the location of the cursor then shows the location of the reminder.

To jump between reminders, first select the **Reminder** icon on the Navigation toolbar. Then click the **Previous** and **Next** icons.

## Choosing drag mode

To select the drag and drop options for inserting items such as other documents and images, into a document using the Navigator, choose one of the following from the drop-down menu of the **Drag**

**Mode** icon .

### Insert As Hyperlink

Creates a hyperlink when you drag and drop an item into the current document.

### Insert As Link

Inserts the selected item as a link where you drag and drop in the current document. Text is inserted as protected sections. However, you cannot create links for graphics, OLE objects, references, or indexes using this method.

### Insert As Copy

Inserts a copy of the selected item where you drag and drop in the current document. You cannot drag and drop copies of graphics, OLE objects, or indexes.

## Undoing and redoing changes

When a document is open, you can undo the most recent change by pressing *Control+Z*, or

clicking the **Undo** icon  on the Standard toolbar, or choosing **Edit > Undo** from the menu bar.

The **Edit** menu shows the latest changes that can be undone.

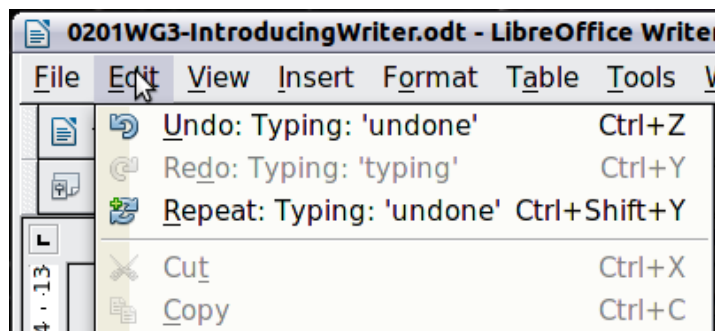


Figure 24: Edit > Undo last action

Click the small triangle to the right of the **Undo** icon to get a list of all the changes that can be undone. You can select multiple changes and undo them at the same time (see Figure 25).

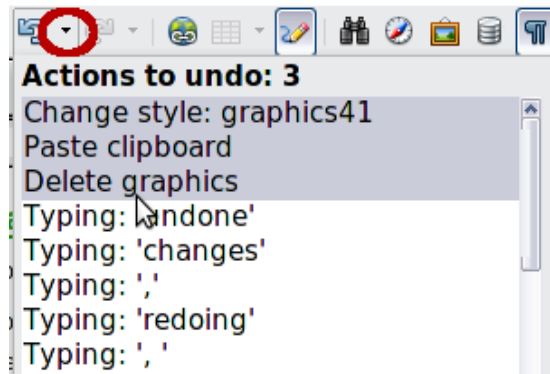


Figure 25: List of actions that can be undone

After changes have been undone, **Redo** becomes active. To redo a change, select **Edit > Redo**, or press

**Control+Y** or click on the **Redo** icon . As with **Undo**, click on the triangle to the right of the arrow to get a list of the changes that can be restored.