



**LibreOffice**  
The Document Foundation

## Impress Guide

# *Chapter 11*

## *Setting Up and Customizing Impress*

## Copyright

---

This document is Copyright © 2007–2012 by its contributors as listed below. You may distribute it and/or modify it under the terms of either the GNU General Public License (<http://www.gnu.org/licenses/gpl.html>), version 3 or later, or the Creative Commons Attribution License (<http://creativecommons.org/licenses/by/3.0/>), version 3.0 or later.

All trademarks within this guide belong to their legitimate owners.

## Contributors

Michele Zarri  
T. Elliot Turner  
Jean Hollis Weber  
Peter Schofield

## Feedback

Please direct any comments or suggestions about this document to:  
[documentation@global.libreoffice.org](mailto:documentation@global.libreoffice.org)

## Acknowledgments

This chapter is based on Chapter 11 of the *OpenOffice.org 3.3 Impress Guide*. The contributors to that chapter are:

Peter Hillier-Brook	Rachel Kartch	Jared Kobos
Hazel Russman	Jean Hollis Weber	Michele Zarri

## Publication date and software version

Published 27 May 2012. Based on LibreOffice 3.4.

## Note for Mac users

---

Some keystrokes and menu items are different on a Mac from those used in Windows and Linux. The table below gives some common substitutions for the instructions in this chapter. For a more detailed list, see the application Help.

<i>Windows or Linux</i>	<i>Mac equivalent</i>	<i>Effect</i>
<b>Tools &gt; Options</b> menu selection	<b>LibreOffice &gt; Preferences</b>	Access setup options
<i>Right-click</i>	<i>Control+click</i>	Opens a context menu
<i>Ctrl (Control)</i>	<i>⌘ (Command)</i>	Used with other keys
<i>F5</i>	<i>Shift+⌘+F5</i>	Opens the Navigator
<i>F11</i>	<i>⌘+T</i>	Opens the Styles and Formatting window

# Contents

---

<b>Copyright</b> .....	<b>2</b>
<b>Note for Mac users</b> .....	<b>2</b>
<b>Selecting options affecting LibreOffice</b> .....	<b>4</b>
User Data options.....	4
Print options.....	5
Color options.....	5
Appearance options.....	6
<b>Choosing options for Impress</b> .....	<b>6</b>
General options.....	7
Text objects section.....	7
New document section.....	7
Settings section.....	7
Start presentation section.....	8
Compatibility section.....	8
View options.....	8
Grid options.....	9
Grid section.....	9
Resolution and Subdivision sections.....	9
Snap section.....	9
Snap position section.....	10
Print options.....	10
<b>Customizing the user interface</b> .....	<b>11</b>
Customizing menu font.....	11
Customizing menu content.....	11
Creating a new menu.....	12
Modifying existing menus.....	12
Adding a command to a menu.....	13
Modifying menu entries.....	14
Customizing toolbars.....	14
Creating a new toolbar.....	15
Adding commands to a toolbar.....	15
Choosing icons for toolbar commands.....	16
Customizing keyboard shortcuts.....	16
Saving changes to a file.....	18
Loading a saved keyboard configuration.....	18
Resetting the shortcut keys.....	18
Running macros from key combinations.....	18
<b>Adding functionality with extensions</b> .....	<b>18</b>
Installing extensions.....	18
Using extensions.....	19
Presenter Console.....	19
Professional Template Pack II.....	20
Presentation Minimizer.....	20
Template Changer.....	20

## Selecting options affecting LibreOffice

---

This section covers some of the settings that apply to all the components of LibreOffice and are of interest to users of Impress. Other general options are discussed in *Chapter 2, Setting Up LibreOffice* in the *Getting Started* guide.

- 1) Click **Tools > Options (LibreOffice > Preferences** on a Mac). The list on the left-hand side of the **Options – LibreOffice** dialog (Figure 1) varies depending on which component of LibreOffice is open. The illustrations in this chapter show the list as it appears when Impress is open.
- 2) Click the expansion marker (+ or triangle) by **LibreOffice** on the left-hand side. A list of subsections drops down.



Figure 1: LibreOffice options

### Note

The **Revert** button (not shown in the illustrations in this chapter) has the same effect on all pages of the Options dialog. It resets the options to the values that were in place when you opened LibreOffice.

## User Data options

Impress uses the first and last name stored in the User Data to fill in the *Created by* and *Modified by* fields in document properties, the optional *Author* field used in the footer of a presentation, and the name associated with comments. If you want your name to appear, then do the following:

- 1) In the Options dialog, click **LibreOffice > User Data** (Figure 2).
- 2) Fill in the form on the **LibreOffice – User Data** page or delete any existing incorrect information.

Figure 2: User Data

## Print options

On the **LibreOffice – Print** page, set the print options to suit your default printer and your most common printing method.

You can change these settings at any time, either through the Options dialog or during the printing process (by clicking the **Options** button on the Print dialog). See *Chapter 10, Printing, E-mailing, Exporting, and Saving Slide Shows* for more information about the options available.

## Color options

On the **LibreOffice – Colors** page (Figure 3), you can specify colors used in LibreOffice documents. You can select a color from a color table, edit an existing color, or define new colors. These colors are stored in your color selection palette and are then available in all components of LibreOffice.

You can also define colors within Impress by choosing **Format > Area** on the menu bar, or through the Line and Filling toolbar, but those colors will not be available to other components of LibreOffice.

Figure 3. Defining colors for use in LibreOffice

## Appearance options

On the **LibreOffice – Appearance** page (Figure 4), you can specify which items are visible and the colors used to display various elements of the user interface. The only option specific to Impress (and Draw) is the color of the grid points. Scroll down in the page until you find **Drawing/Presentation**.

To change the default color for grid points, click the down-arrow by the color and select a new color from the pop-up dialog.

If you wish to save your color changes as a color scheme, click **Save**, type a name in the **Save scheme** dialog, then click **OK**.

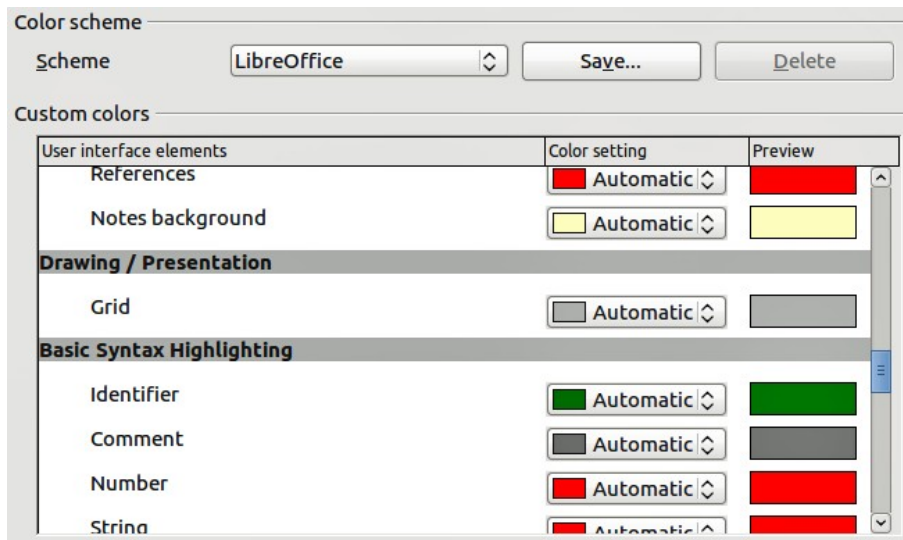


Figure 4. Changing the color of grid points in Impress and Draw

## Choosing options for Impress

In the Options dialog, click the expansion marker to the left of **LibreOffice Impress** on the left-hand side. A list of subsections for Impress drops down (Figure 5).

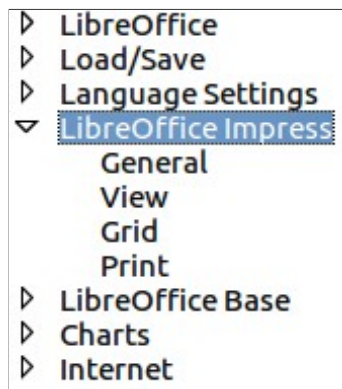


Figure 5: Options for Impress

## General options

In the Options dialog, click **LibreOffice Impress > General** (Figure 6).

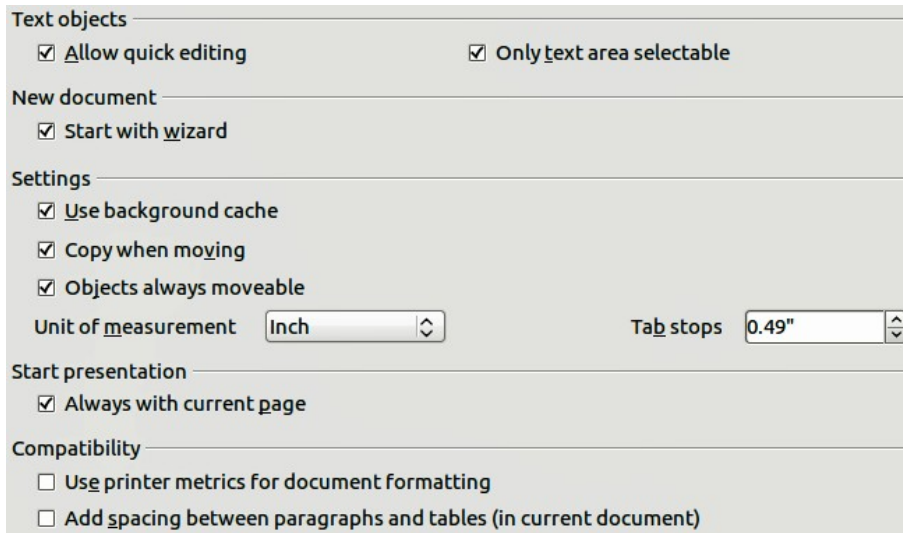


Figure 6: Selecting general options for Impress

### Text objects section

- **Allow quick editing:** sets Impress to immediately switch to text editing mode when you click on a text object. You can also activate the text editing mode through the **Allow Quick**



**Editing** icon  on the Options toolbar (Figure 7). If the Options toolbar is not open, then go to **View > Toolbars > Options** on the main menu.



Figure 7: Options toolbar

- **Only text area selectable:** sets Impress to select a text frame when you click on text. In the area of the text frame that is not filled with text, an object behind the text frame can be selected. You can also activate this mode through the **Select Text Area Only** icon  on the Options toolbar.

### New document section

- **Start with Wizard:** when selected Impress starts with the Presentation Wizard when creating a new presentation using **File > New > Presentation** or one of the other methods of creating a presentation.

### Settings section

- **Use background cache:** sets Impress to use the cache for displaying objects on the master page. This setting speeds up the display. Uncheck this option if you want Impress to draw the background every time you display a slide.
- **Copy when moving:** automatically creates a copy when you move, rotate or resize an object while holding down the *Ctrl* key (⌘ key for Mac). The original object will remain in its current position and size.

- **Objects always movable:** lets you move an object with the **Rotate** tool enabled. If this option is not selected, the **Rotate** tool can only be used to rotate an object.
- **Unit of measurement:** determines the unit of measurement used in presentations.
- **Tab stops:** defines the spacing between tab stops.

### Start presentation section

- **Always with current page:** specifies that a presentation starts with the current slide. Uncheck this option to always start a presentation with the first page.

### Compatibility section

The settings in this section are valid for the current presentation only.

- **Use printer metrics for document formatting:** applies printer metrics for printing and for formatting the display on the screen. Some formatting will depend on the printer selection or default printer on your computer and may vary if the presentation is moved to a different computer. If this option is not checked, a printer-independent layout is used for screen display and printing.
- **Add spacing between paragraphs and tables (in current document):** calculates the paragraph spacing in Impress exactly as Microsoft PowerPoint does. Microsoft PowerPoint adds the bottom spacing of a paragraph to the top spacing of the next paragraph to calculate the total spacing between both paragraphs. Impress normally uses only the larger of the two spacings.

### View options

In the Options dialog, click on **LibreOffice Impress > View** (Figure 8).

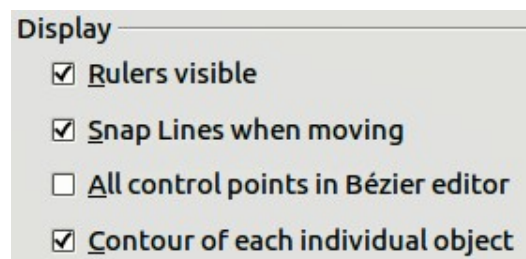



Figure 8: Specifying view options for Impress

- **Rulers visible:** displays the rulers at the top and the left of the Workspace area.
- **Guides when moving:** displays dotted guides that extend beyond the box containing the selected object and which cover the entire work area, helping you position the object when moving it. You can also use the **Helplines When Moving** icon  on the Options toolbar (Figure 7 on page 7).
- **All control points in Bézier editor:** displays the control points of all Bézier points if you have previously selected a Bézier curve. If this option is not selected, only the control points of the selected Bézier points will be visible.
- **Contour of each individual object:** displays the contour line of each individual object when moving the object. This enables you to see if single objects conflict with other objects in the target position. If you do not select this option, Impress displays only a square contour that includes all selected objects.



## Grid options

The Grid page defines the grid settings for Impress. Using a grid helps you determine the exact position of your objects. You can also set this grid in line with the snap grid.

In the Options dialog, click **LibreOffice Impress > Grid** (Figure 9).

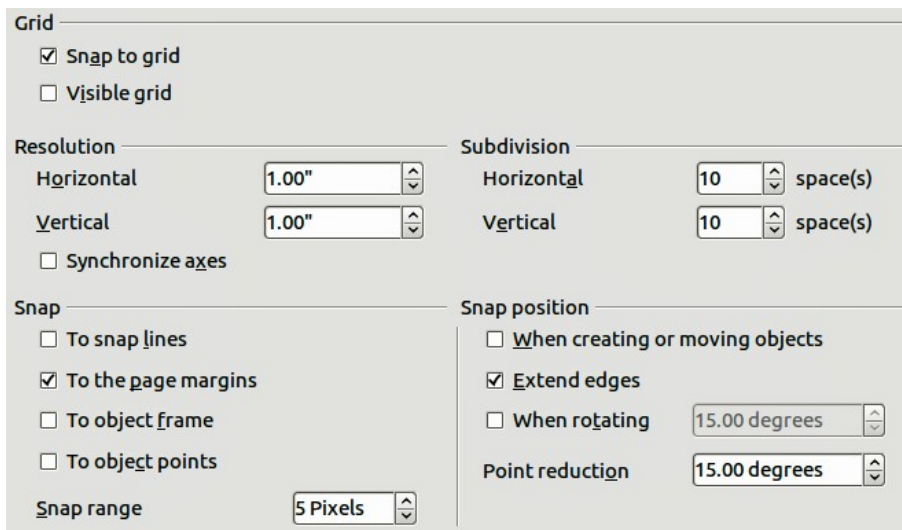



Figure 9: Specifying grid options for Impress

### Grid section




- **Snap to grid:** activates the snap function. If this option is selected, but you want to move or create individual objects without snapping to the grid, press the *Ctrl* key to deactivate **Snap to grid** whilst moving the individual object. You can also use the **Snap to Grid** icon  on the Options toolbar.
- **Visible grid:** displays grid points on the screen. These points will not display or print as part of a presentation.


### Resolution and Subdivision sections

This section allows you to set the unit of distance for the spacing between horizontal and vertical grid points and subdivisions (intermediate points) of the grid.

- **Synchronize axes:** applies any changes to the Resolution or Subdivision settings to both axes of object movement.

### Snap section

- **To snap lines:** snaps the edge of an object to the nearest snap line when you release the mouse button. You can also use the **Snap to Snap Lines** icon  on the Options toolbar.
- **To the page margins:** aligns the contour of the graphic object to the nearest page margin. The cursor or a contour line of the graphic object must be within snap range. You can also use the **Snap to Page Margins** icon  on the Options toolbar.
- **To object frame:** aligns the contour of the graphic object to the border of the nearest graphic object. The cursor or a contour line of the graphic object must be within snap range. You can also use the **Snap to Object Border** icon  on the Options toolbar.

- **To object points:** aligns the contour of the graphic object to the points of the nearest graphic object. The cursor or a contour line of the graphic object must be within snap range. You can also use the **Snap to Object Points** icon  on the Options toolbar.
- **Snap range:** defines the snap distance between the mouse pointer and the object contour. Impress snaps to a snap point if the mouse pointer is nearer than the distance selected in the **Snap range** box.

### Snap position section

- **When creating or moving objects:** restricts graphic objects vertically, horizontally or diagonally (45°) when creating or moving them. You can temporarily deactivate this setting by pressing the *Shift* key.
- **Extend edges:** controls how a square or circle is drawn with the drawing tool. When this option is selected, when the *Shift* key is pressed before pressing the mouse button a square is drawn equal to the longer side of a rectangle. This also applies to the ellipse tool: when the *Shift* key is pressed before you press the mouse button a circle will be drawn based on the longest diameter of the ellipse. When the **Extend edges option** is not selected, a square or a circle will be created based on the shorter side or diameter.
- **When rotating:** restricts the rotation of graphic objects within the rotation angle that you select. If you want to rotate an object outside of the defined angle, press the *Ctrl* key (*Shift* key on Mac) when rotating. Release the key when the desired rotation angle is reached.
- **Point reduction:** defines the angle for point reduction. When working with polygons, you might find it useful to reduce their editing points.

### Print options

In the Options dialog, click on **LibreOffice Impress > Print** (Figure 10). See *Chapter 10, Printing, E-mailing, Exporting, and Saving Slide Shows* for more information about the options available.

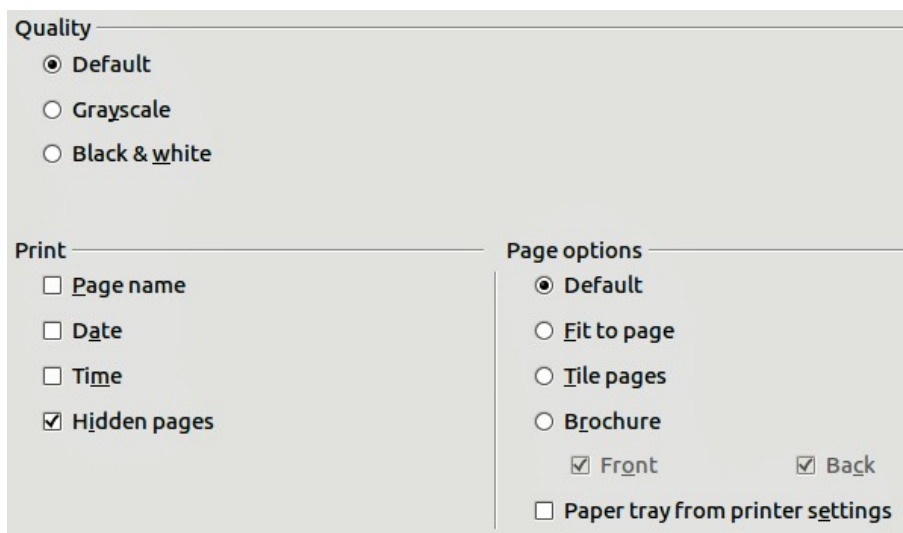


Figure 10: Specifying print options for Impress

## Customizing the user interface

### Customizing menu font

If you want to change the menu font from that supplied by LibreOffice to the system font for your operating system, do this:

- 1) Choose **Tools > Options > LibreOffice > View**.
- 2) Check **Use system font for user interface** and click **OK**.

### Customizing menu content

You can customize the menus in Impress by adding and rearrange items on the menu bar, adding items to menus, and other changes.

- 1) Choose **Tools > Customize** to open the Customize dialog (Figure 11).

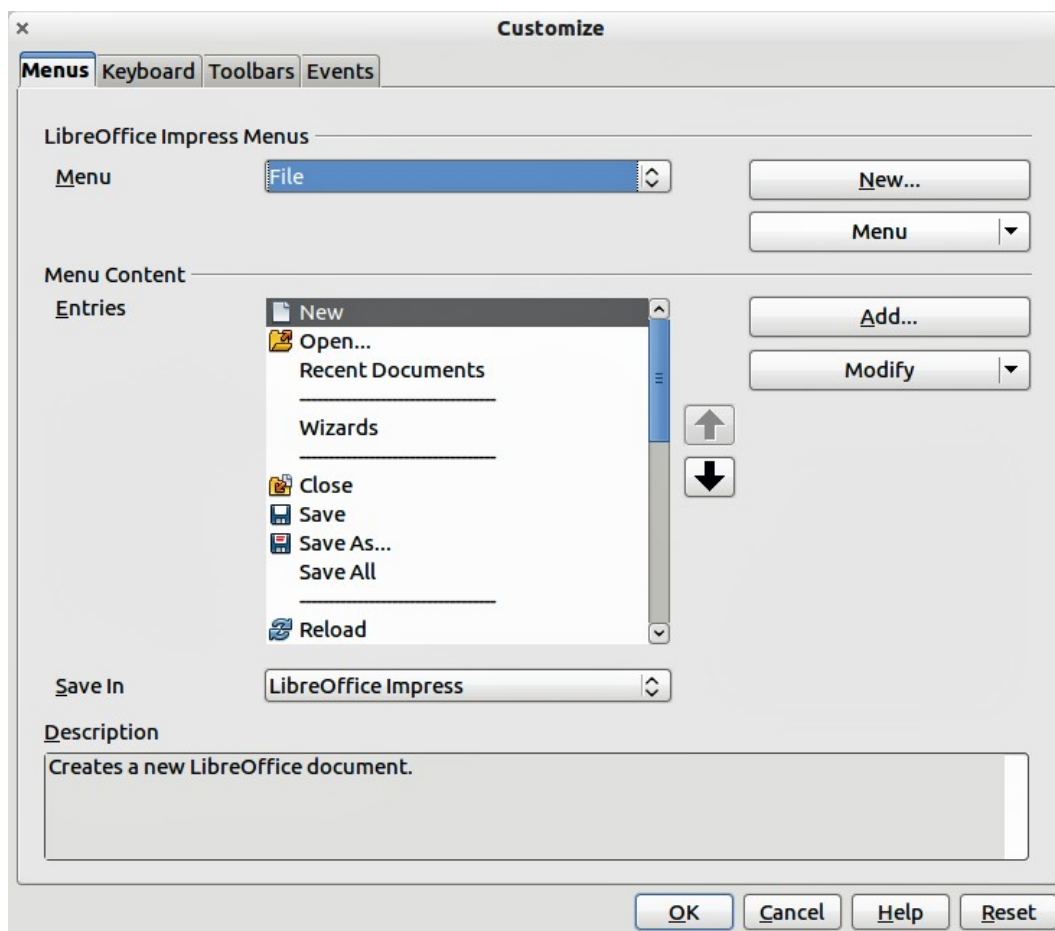


Figure 11. Menu page of the Customize dialog

- 2) Make sure the **Menu** page is open.
- 3) In the **Save In** drop-down list, select whether to save this customized menu in LibreOffice Impress or for a presentation.
- 4) In the section **LibreOffice Impress Menu**, select from the **Menu** drop-down list the menu that you want to customize.
- 5) To customize the selected menu, click on the **Menu** or **Modify** buttons. You can also add commands to a menu by clicking on the **Add** button. These actions are described in the

following sections. Use the up and down arrows next to the **Entries** list to move the selected menu item to a different position.

- 6) When you have finished making all your changes, click **OK** to save them.

### Creating a new menu

To create a new menu:

- 1) In the Menus page of the Customize dialog box, click **New** to open the New Menu dialog (Figure 12).
- 2) Type a name for your new menu in the **Menu name** box.

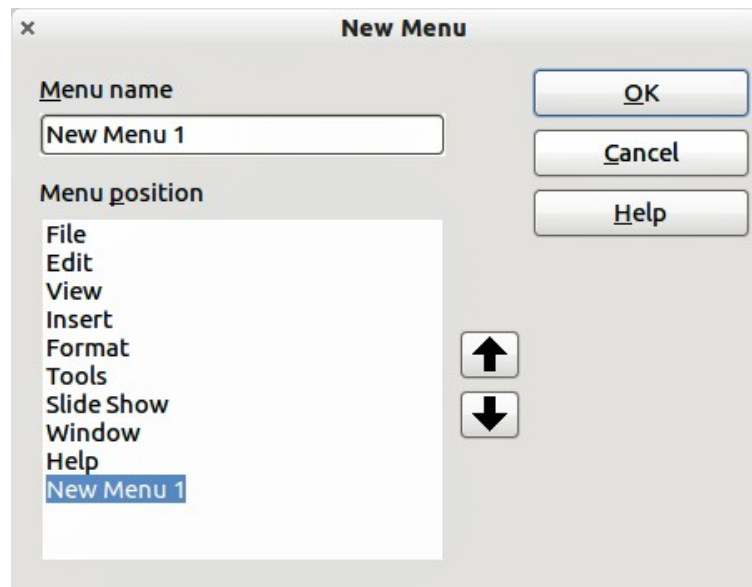


Figure 12: Adding a new menu

- 3) Use the up and down arrow buttons to move the new menu into the required position on the menu bar.
- 4) Click **OK** to save. The new menu now appears on the list of menus in the Customize dialog. It will appear on the menu bar itself after you save your customizations.

After creating a new menu, you need to add some commands to it, as described in “Adding a command to a menu” on page 13.

### Modifying existing menus

To modify an existing menu:

- 1) Select it in the Menu list and click the **Menu** button to open a list of modifications: **Move**, **Rename**, **Delete**. Only **Move** is available in the list. **Rename** and **Delete** are not available for the menus supplied by LibreOffice.
- 2) To move a menu (such as *File*), select **Menu > Move** to open the dialog (Figure 13). Use the up and down arrow buttons to move the menu into the required position.
- 3) To move submenus (such as *File | Send*), select the main menu (File) in the Menu list and then, in the Menu Content section of the Customize dialog (Figure 11), select the submenu *Send* in the **Entries** list and use the arrow keys to move it up or down in the sequence.

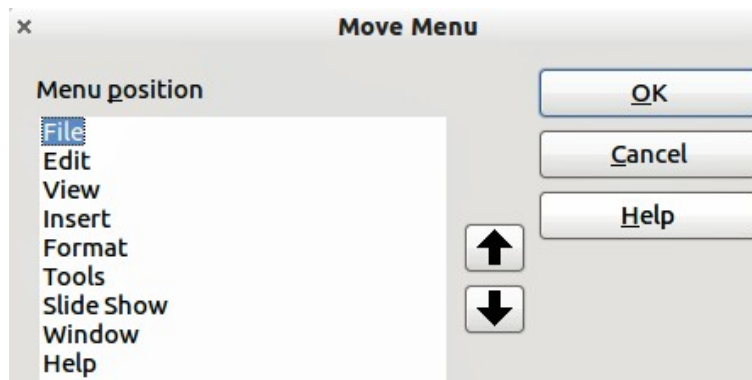


Figure 13: Moving a menu

In addition to renaming a menu, you can specify a keyboard shortcut that allows you to select a menu command when you press *Alt* key plus an underlined letter in a menu command.

- 1) Select a menu or menu entry.
- 2) Click the **Modify** button in the Customize dialog (Figure 11) and select **Rename**.
- 3) Add a tilde (~) in front of the letter that you want to use as an accelerator. For example, to select the Save All command by pressing *Alt+V*, enter **Sa~ve All**.

### Caution



Be careful when creating new shortcuts. In the example above, if the File menu is not already open, then pressing *Alt+V* opens the View menu. If another menu is open, *Alt+V* might activate some other command.

### Adding a command to a menu

You can add commands to menus and to menus you have created.

- 1) In the Customize dialog (Figure 11), select the menu in the Menu list and click the **Add** button.
- 2) In the Add Commands dialog (Figure 14), select a category and then the command, and click **Add**. The dialog remains open, so you can select additional commands.

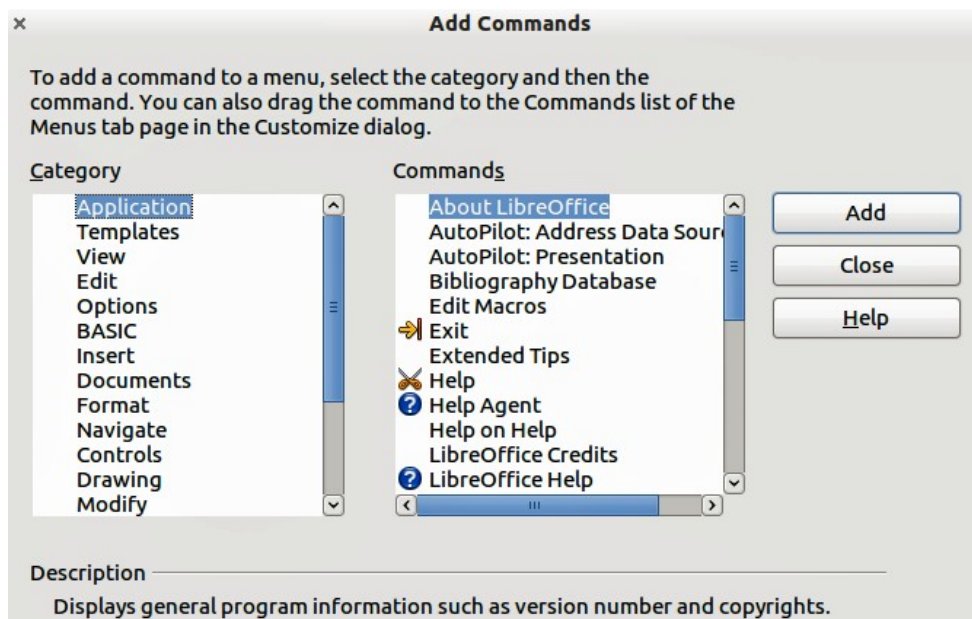


Figure 14: Adding a command to a menu

- 3) When you have finished adding commands, click **Close**.
- 4) In the Customize dialog, you can use the up and down arrow buttons to arrange the commands in your preferred sequence.

### Modifying menu entries

In addition to changing the sequence of entries on a menu or submenu, you can add submenus, rename or delete the entries, and add group separators.

- 1) Select the menu or submenu in the **Menu** list near the top of the Customize dialog (Figure 11 on page 11).
- 2) Select the entry in the **Entries** list under Menu Content.
- 3) Click the **Modify** button and choose the required action from the drop-down list of actions. Most of the actions are self-explanatory. **Begin a group** adds a separator line after the highlighted entry.

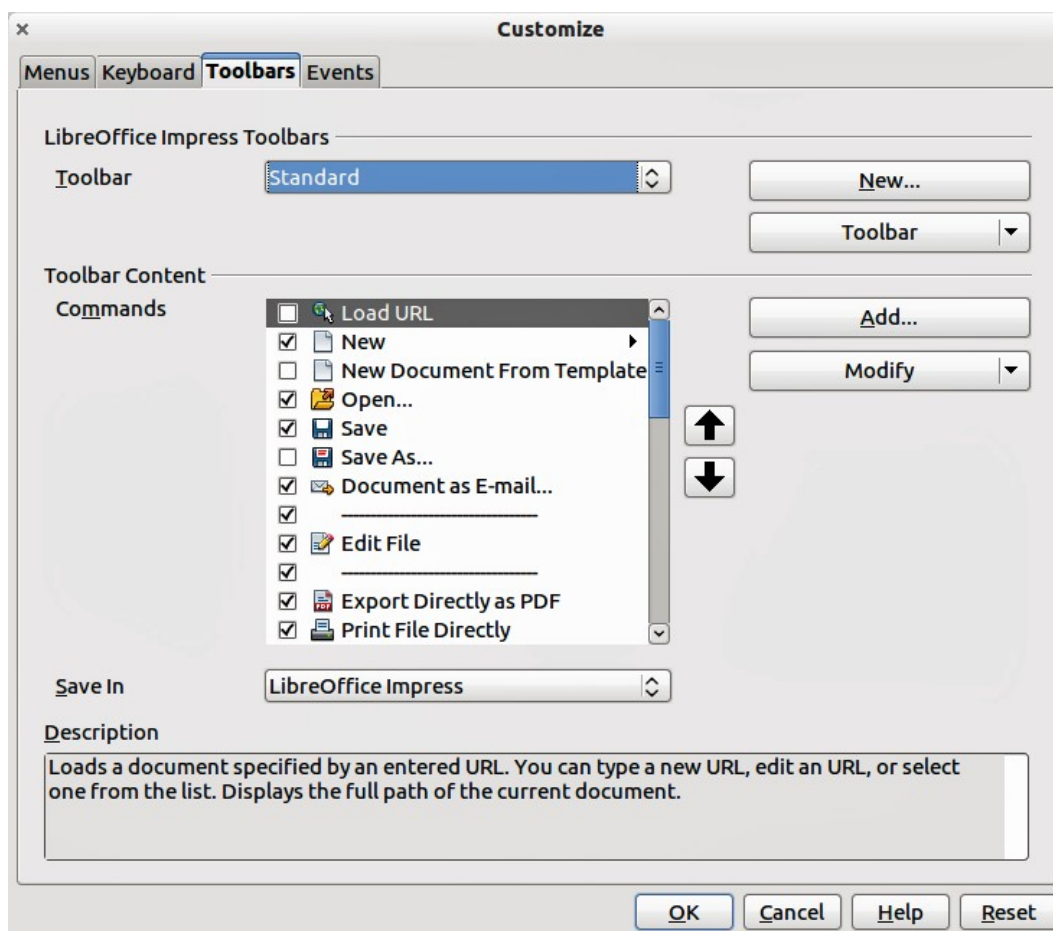


Figure 15. Toolbars page of the Customize dialog

### Customizing toolbars

You can customize toolbars in several ways, including choosing which icons are visible, and locking the position of a docked toolbar, as described in *Chapter 1, Introducing LibreOffice of the Getting Started* guide. This section describes how to create new toolbars and add other icons (commands) to the list of those available on a toolbar.



To open the customization dialog (Figure 15), do any of the following:

- On the toolbar, click the arrow at the end of the toolbar and choose **Customize Toolbar**.
- Choose **View > Toolbars > Customize** from the menu bar.
- Choose **Tools > Customize > Toolbars tab** from the menu bar.

To customize toolbars:

- 1) Make sure the **Toolbars** page is open.
- 2) In the **Save In** drop-down list, select whether to save this customized toolbar for Impress or for a selected presentation.
- 3) In the **LibreOffice Impress Toolbars** section, select from the **Toolbar** drop-down list the toolbar that you want to customize.
- 4) Click the **Toolbar** button on the right to display a drop-down list of options for customizing the toolbar.
- 5) To display or hide commands, select or deselect the checkboxes in the **Toolbar Content – Commands** section.
- 6) To change the position of commands on a toolbar, select a command and click the up and down arrows to the right of the lists.
- 7) When you have finished customizing a toolbar, click **OK** to save your changes.

### Creating a new toolbar

To create a new toolbar:

- 1) Choose **Tools > Customize > Toolbars** from the main menu to open the Customize dialog (Figure 15).
- 2) Make sure the **Toolbars** page is open.
- 3) Click on **New** to open the Name dialog (Figure 16).
- 4) Type a name for the new toolbar and select from the **Save In** drop-down list where to save this new menu: for Impress or for a selected document.

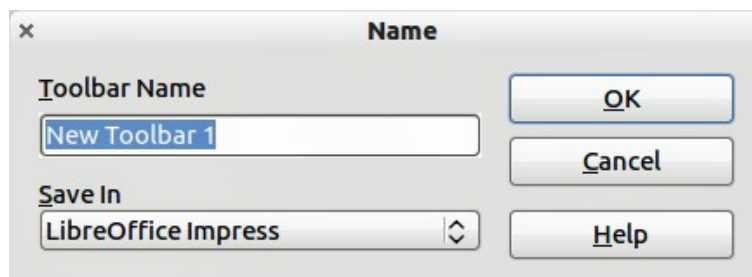


Figure 16: New toolbar dialog

The new toolbar now appears on the list of toolbars in the Customize dialog. After creating a new toolbar, you need to add some commands to it, as described below.

### Adding commands to a toolbar

To add commands to a new toolbar or to customize an existing toolbar as follows:

- 1) On the **Toolbars** page of the Customize dialog (Figure 15), select the toolbar from the **Toolbar** drop down list and click the **Add** button. The Add Commands dialog (Figure 14 on page 13) opens and is the same dialog used for adding commands to menus.
- 2) Select a **Category** and then the **Command** from the relevant list.
- 3) Click on **Add**. The dialog remains open, so you can select additional commands.

- 4) When you have finished adding commands, click **Close**. If you insert an item which does not have an associated icon, the toolbar will display the full name of the item; the next section describes how to choose an icon for a toolbar command.
- 5) On the Customize dialog, you can use the up and down arrow buttons to arrange the commands in your preferred sequence.
- 6) When you have finished making changes, click **OK** to save.

### Choosing icons for toolbar commands

Toolbar buttons usually have icons, not words, on them, but not all of the commands have associated icons.

To choose an icon for a command:

- 1) Select the command and click on **Modify > Change icon** to open the Change Icon dialog (Figure 17).
- 2) Scroll through the available icons and select the one you want to use.
- 3) Click **OK** to assign it to the command.

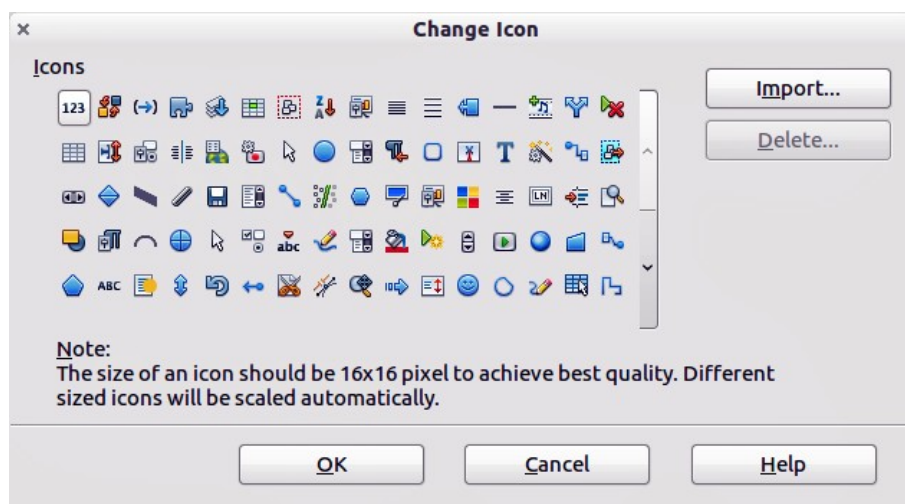


Figure 17: Change Icon dialog

To use a custom icon, create it in a graphics program and then import it into LibreOffice by clicking the **Import** button on the Change Icon dialog. Custom icons must be 16 x 16 or 26 x 26 pixels in size and cannot contain more than 256 colors.

### Customizing keyboard shortcuts

The *Appendix* to this guide lists the default keyboard shortcuts supplied with Impress. You can change these defaults or add new shortcuts. You can assign shortcuts to standard Impress functions or your own macros and save them for use with Impress only or with the LibreOffice suite.

#### Caution



Be careful when reassigning predefined shortcut keys used in your operating system or LibreOffice. Many key assignments are universally understood shortcuts, such as *F1* for Help, and are always expected to provide certain results. Although you can easily reset the shortcut key assignments to LibreOffice defaults, changing some common shortcut keys can cause confusion, frustration and possible data loss or corruption, especially if other users share your computer.



For example, suppose you wish to assign a shortcut key to easily insert a duplicate slide in your presentation. You could assign the *Insert* key as a logical shortcut for this purpose, as described below.

- 1) Choose **Tools > Customize**.

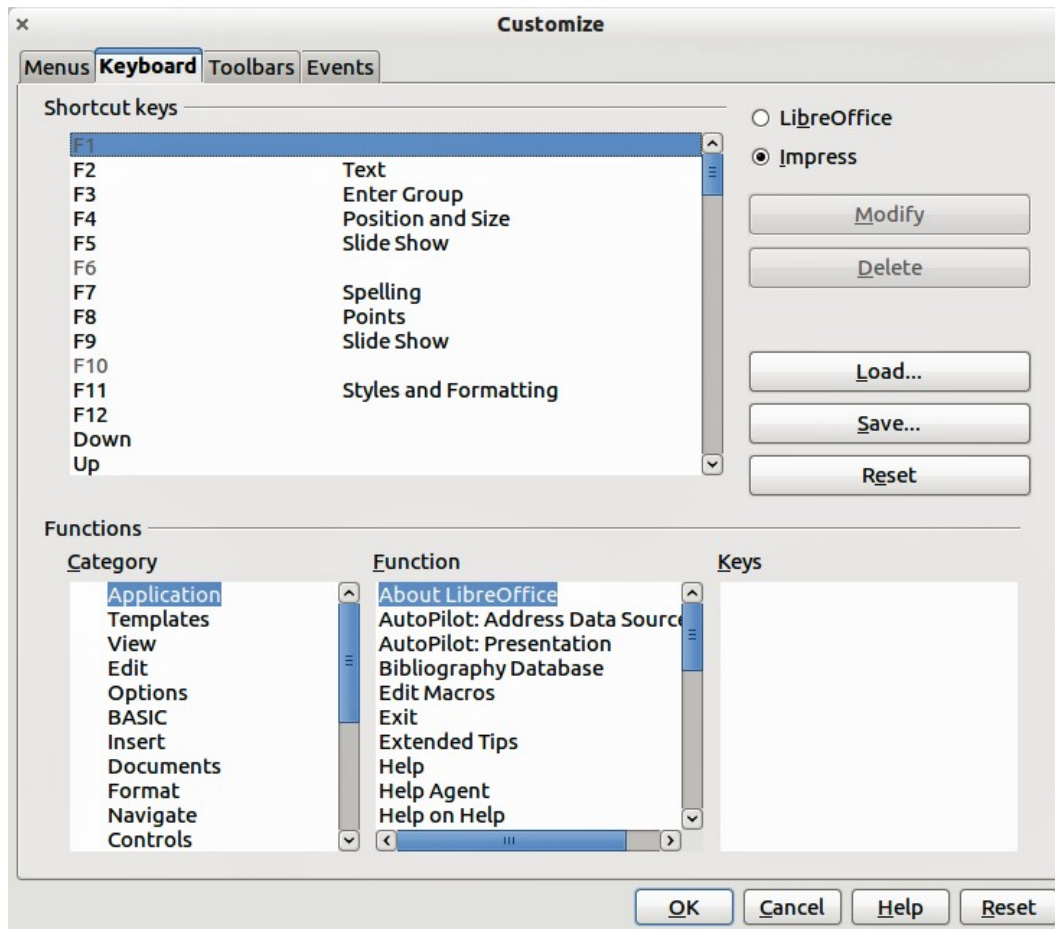


Figure 18: Customizing keyboard shortcuts

- 2) On the Customize dialog, open the Keyboard page (Figure 18).
- 3) As the shortcut key assignment is only relevant with Impress and not LibreOffice, select **Impress** at the upper right corner of the **Keyboard** page.
- 4) Select **Insert** in the **Functions - Category** list and **Duplicate Slide** in the **Function** list.
- 5) Select the shortcut key **Insert** in the **Shortcut keys** list and click the **Modify** button at the upper right.
- 6) Click **OK** to accept the change. Now the *Insert* key will insert a duplicate slide immediately after the currently selected slide.

### Note

All existing shortcut keys for the currently selected *Function* are listed in the *Keys* selection box. Since there was no currently assigned shortcut for the **Insert > Duplicate Slide** function the *Keys* list was empty. If it had not been, and you wished to reassign a shortcut key combination that was already in use, you would first have to **Delete** the existing *Key*.

Shortcut keys not available for reassignment are greyed out in the listing on the Customize dialog, such as *F1* and *F10*.

## **Saving changes to a file**

Changes to the shortcut key assignments (and other configurations) can be saved in a keyboard configuration file for use at a later time. This allows you to create and apply different configurations as the need arises.

To save keyboard shortcuts to a file:

- 1) After making your keyboard shortcut assignments, click the **Save** button on the Customize dialog.
- 2) In the Save Keyboard Configuration dialog box, select *All files* from the **Save as Type** list.
- 3) Enter a name for the keyboard configuration file in the **File name** box, or select an existing file from the list. If you need to, browse to find a file from another location.
- 4) Click **Save**. A confirmation dialog will appear if you are about to overwrite an existing file; otherwise there will be no feedback and the file will be saved.

## **Loading a saved keyboard configuration**

To load a saved keyboard configuration file and replace your existing configuration, click the **Load** button on the Customize dialog, and then select the configuration file from the Load Keyboard Configuration dialog.

## **Resetting the shortcut keys**

To reset all of the keyboard shortcuts to their default values, click the **Reset** button on the Customize dialog. Use this feature with care as no confirmation dialog will be displayed and the defaults will be set without any further notice or user input.

## **Running macros from key combinations**

You can also define shortcut key combinations that will run macros. These shortcut keys are strictly user-defined; none are built in. For information on macros, see *Chapter 13, Getting started with macros* in the *Getting Started* guide.

## **Adding functionality with extensions**

---

An extension is a package that can be installed into LibreOffice to add new functionality.

Although individual extensions can be found in different places, the official LibreOffice extension repository is at <http://extensions.libreoffice.org/>. Some extensions are free of charge; others are available for a fee. Check the descriptions to see what licenses and fees apply to the ones that interest you.

## **Installing extensions**

To install an extension, follow these steps:

- 1) Download an extension and save it anywhere on your computer.
- 2) In LibreOffice, select **Tools > Extension Manager** from the main menu.
- 3) In the Extension Manager dialog (Figure 19), click **Add**.
- 4) A file browser window opens. Find and select the extension you want to install and click **Open**. The extension begins installing. You may be asked to accept a license agreement.
- 5) When the installation is complete, the extension is listed in the Extension Manager dialog.

## Tip

To get extensions that are listed in the repository, you can open the Extension Manager and click the **Get more extensions online** link.

## Note

To install a *shared* extension, you need write access to the LibreOffice installation directory.

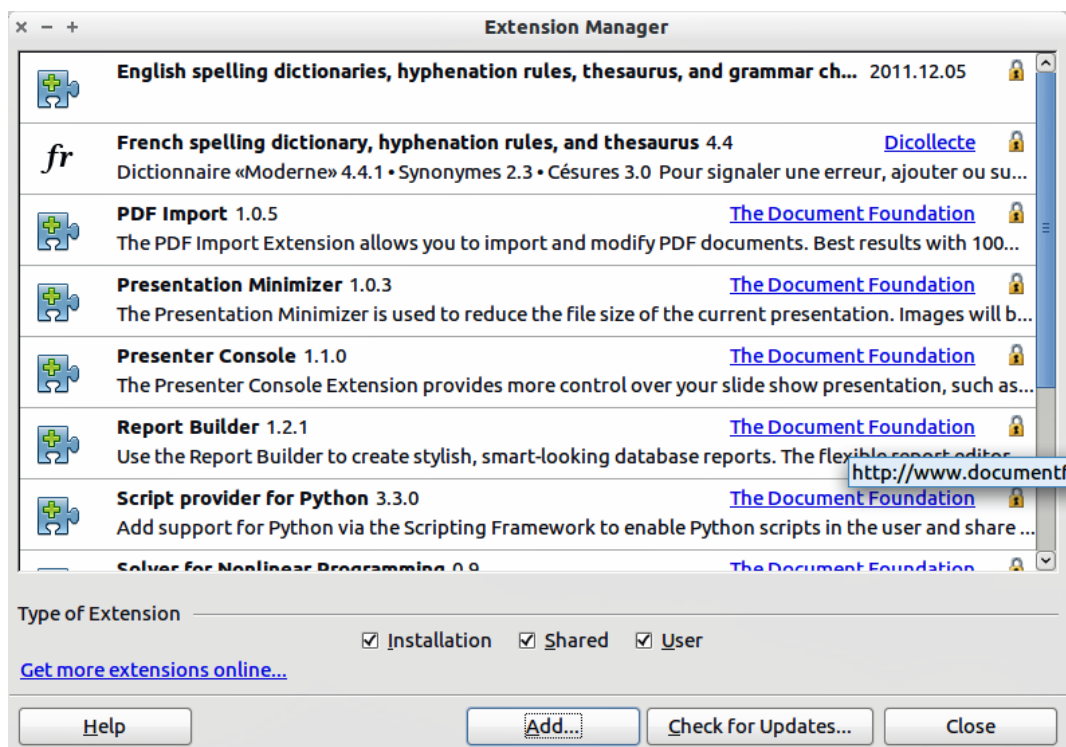


Figure 19: Extension Manager dialog

## Using extensions

This section describes some of the more important and popular extensions to Impress. In each case, you need to first install the extension as described in the previous section.

### Presenter Console

This is bundled with most installations of LibreOffice and provides extra control over slide shows (presentations). For example, the presenter has the ability to see the upcoming slide, the slide notes, and a presentation timer, while the audience only sees the current slide. The Presenter Console displays the elements in three easily changeable views:

- The first view displays the current slide, including the effects, and the upcoming slide.
- The second view shows notes for the speaker in large, clear, and scalable type, plus the current and upcoming slide.
- The third view is a slide sorter view with the slide thumbnails.

The Presenter Console is only available for use if you have a second display connected to your computer. See *Chapter 9, Slide Shows* for more information about using the Presenter Console.

## Note

The Presenter Console works only on an operating system that supports multiple displays and only when two displays are connected (one may be the laptop's built-in screen).

### ***Professional Template Pack II***

Provides more than 120 templates for Writer, Calc, and Impress. Available in several languages. After you have installed this extension, you will find the templates under **File > New > Templates and Documents**.

### ***Presentation Minimizer***

Reduces the file size of the current presentation. Images are compressed and data that is no longer needed is removed. Can also optimize the image quality size. Presentations designed for screen or projector do not require the same high quality as presentations designed for print.

### ***Template Changer***

Adds two new items to the **File > Templates** menu that allow you to assign a new template to a folder of presentations. All styles and formatting will be loaded from that template and the document will behave as if it were created using that template.