



**LibreOffice**  
The Document Foundation

## Writer Guide

# *Chapter 10*

## *Working with Templates*

## Copyright

---

This document is Copyright © 2011-2013 by its contributors as listed below. You may distribute it and/or modify it under the terms of either the GNU General Public License (<http://www.gnu.org/licenses/gpl.html>), version 3 or later, or the Creative Commons Attribution License (<http://creativecommons.org/licenses/by/3.0/>), version 3.0 or later.

All trademarks within this guide belong to their legitimate owners.

## Contributors

Jean Hollis Weber  
Barbara Duprey

John A Smith  
Hazel Russman

Ron Faile Jr.  
Gary Schnabl

## Feedback

Please direct any comments or suggestions about this document to:  
[documentation@global.libreoffice.org](mailto:documentation@global.libreoffice.org)

## Acknowledgments

This chapter is based on Chapter 10 of the *OpenOffice.org 3.3 Writer Guide*. The contributors to that chapter are:

Alan Madden  
Jean Hollis Weber

Paul Miller  
Michele Zarri

Catherine Waterman

## Publication date and software version

Published 2 April 2013. Based on LibreOffice 4.0.

## Note for Mac users

---

Some keystrokes and menu items are different on a Mac from those used in Windows and Linux. The table below gives some common substitutions for the instructions in this chapter. For a more detailed list, see the application Help.

<b>Windows or Linux</b>	<b>Mac equivalent</b>	<b>Effect</b>
<b>Tools &gt; Options</b> menu selection	<b>LibreOffice &gt; Preferences</b>	Access setup options
<i>Right-click</i>	<i>Control+click</i>	Opens context menu
<i>Ctrl Control)</i>	⌘ ( <i>Command</i> )	Used with other keys
<i>F5</i>	<i>Shift+⌘+F5</i>	Opens the Navigator
<i>F11</i>	⌘+T	Opens Styles and Formatting window

# Contents

---

<b>Copyright</b> .....	<b>2</b>
Contributors.....	2
Feedback.....	2
Acknowledgments.....	2
Publication date and software version.....	2
<b>Note for Mac users</b> .....	<b>2</b>
<b>Introduction</b> .....	<b>4</b>
<b>Using a template to create a document</b> .....	<b>4</b>
<b>Creating a template</b> .....	<b>5</b>
Creating a template from a document.....	5
Creating a template using a wizard.....	6
<b>Editing a template</b> .....	<b>7</b>
Updating a document from a changed template.....	7
<b>Adding templates obtained from other sources</b> .....	<b>8</b>
Installing individual templates.....	8
Installing collections of templates.....	8
<b>Setting a default template</b> .....	<b>9</b>
Setting a custom template as the default.....	9
Resetting Writer’s default template as the default.....	10
<b>Associating a document with a different template</b> .....	<b>11</b>
<b>Organizing templates</b> .....	<b>11</b>
Creating a template folder.....	11
Deleting a template folder.....	12
Moving a template.....	12
Deleting a template.....	12
Importing a template.....	13
Exporting a template.....	13

## Introduction

---

A template is a document model that you use to create other documents. For example, you can create a template for business reports that has your company's logo on the first page. New documents created from this template will all have your company's logo on the first page.

Templates can contain anything that regular documents can contain, such as text, graphics, a set of styles, and user-specific setup information such as measurement units, language, the default printer, and toolbar and menu customization.

All documents in LibreOffice are based on templates. If you do not specify a template when you start a new Writer document, then the document is based on the default template for text documents. If you have not specified a default template, Writer uses the blank template for text documents that is installed with LibreOffice. See "Setting a default template" on page 9 for more information.

LibreOffice 4.0 supplies one user-selectable text template, MediaWiki, as an alternative to the default in documents (Writer). Note that German is the default document language in the MediaWiki template. This can be changed on the **Languages** page in **Tools > Options > Language Settings**.

Ten colored backgrounds are supplied for presentations (Impress). No alternative templates are supplied for drawings (Draw) or spreadsheets (Calc).

## Using a template to create a document

---

To use a template to create a document:

- 1) From the Menu bar, choose **File > New > Templates** to open the Template Manager dialog.

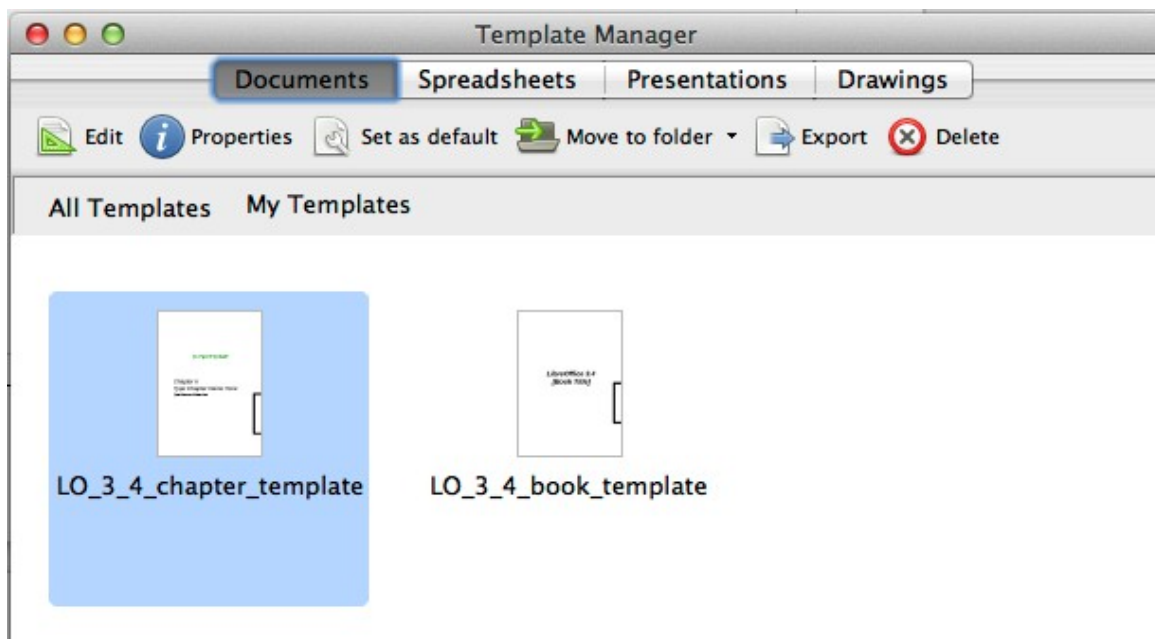


Figure 1. Template Manager

- 2) From the tabs at the top of the dialog, select the Documents category (type) of template. Folders containing templates are listed in the category page of the dialog. If no other folders than MediaWiki are visible, there are no templates available.

- 3) Double-click the folder that contains the template that you want to use, typically this will be My Templates. All the templates contained in that folder are then listed on the page, as shown in Figure 1.
- 4) Select the template that you want to use. If you wish to view the template's properties, click the **Properties** button above the list of templates. The template's properties appear in a pop-up window. Click **Close** to close this pop-up window.
- 5) Double-click on the required template. A new document based on the selected template opens in Writer. You can then edit and save the new document just as you would any other document.

## Creating a template

---

You can create your own templates in two ways: from a document or using a wizard.

### Creating a template from a document

To create a template from a document and save it to My Templates:

- 1) Open a new or existing document that you want to make into a template.
- 2) Add or modify the content and styles that you want.
- 3) From the Menu bar, choose **File > Save as Template**. The Template Manager dialog opens displaying the four default folders (and any user created folders).

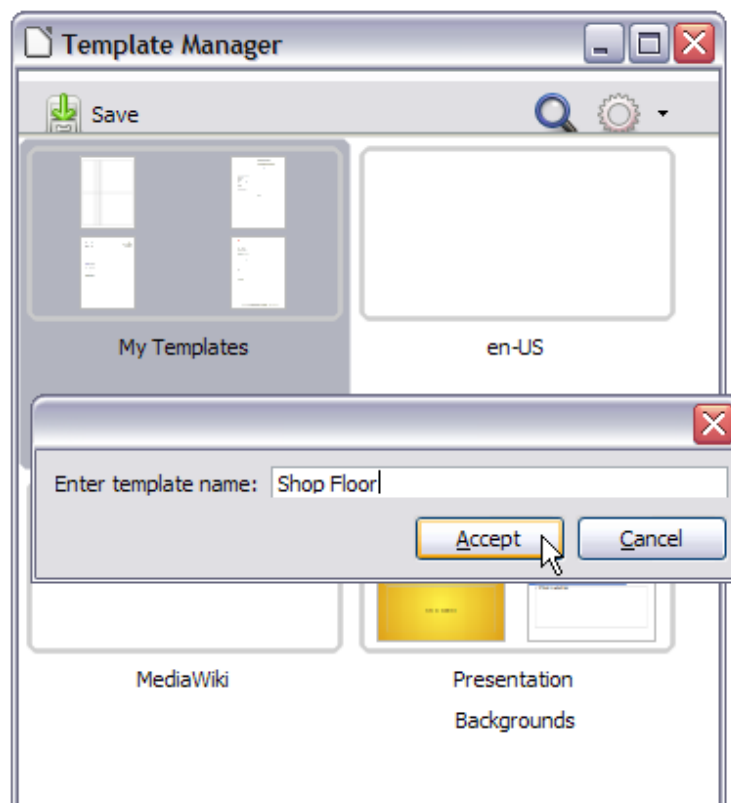


Figure 2: Saving a template

- 4) Select the My Templates folder.
- 5) Click the **Save** icon.
- 6) Enter a name for the template in the text input box that opens, and click **Accept** (see Figure 2).
- 7) Close the Template Manager dialog.

Any settings that can be added to or modified in a document can be saved in a template. For example, below are some of the settings (although not a full list) that can be included in a Writer document and then saved as a template for later use:

- Printer settings: which printer, single-sided or double-sided printing, paper size, and so on
- Styles to be used, including character, page, frame, numbering, and paragraph styles
- Format and settings regarding indexes, tables, bibliographies, table of contents

Templates can also contain predefined text, saving you from having to type it every time you create a new document. For example, a letter template may contain your name, address, and salutation.

You can also save menu and toolbar customizations in templates; see Chapter 16, Customizing Writer, for more information.

## Creating a template using a wizard

You can use wizards to create Writer templates for letters, faxes, and agendas.

For example, the Fax Wizard guides you through the following choices:

- Type of fax (business or personal)
- Document elements like the date, subject line (business fax), salutation, and complimentary close
- Options for sender and recipient information (business fax)
- Text to include in the footer (business fax)

To create a template using a wizard:

- 1) From the menu bar, choose **File > Wizards > [type of template required]**.

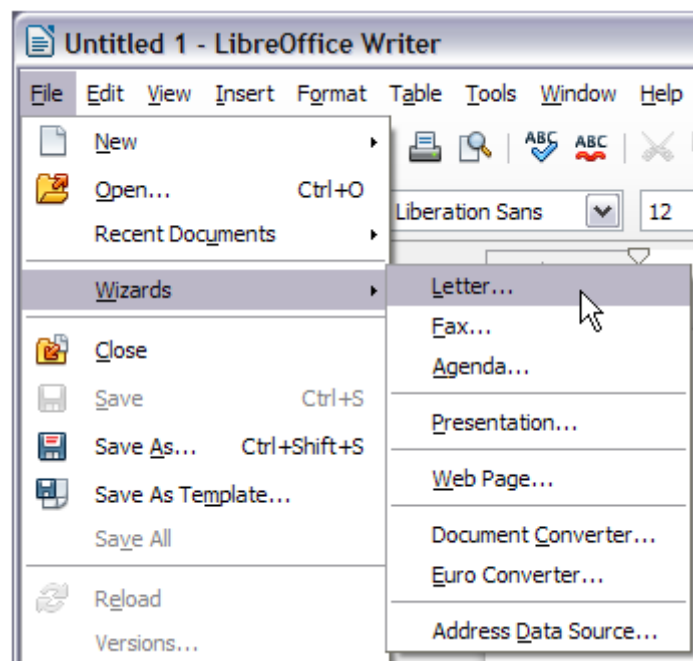


Figure 3: Creating a template using a wizard

- 2) Follow the instructions on the pages of the wizard. This process is slightly different for each type of template, but the format is similar for all of them.
- 3) In the last section of the wizard, you can specify the template name which will show in the Template Manager, and also the name and location for saving the template. The two names can be different but may cause you confusion if you choose two different names.

The default location is your user templates folder, but you can choose a different location if you prefer.

- 4) Selecting the **Path** button to set the file name, and perhaps change the directory, causes the **Save As** dialog to open. Setting the file name and clicking **Save** closes the dialog.
- 5) Finally, you have the option of creating a new document from your template immediately, or manually changing the template, by clicking **Finish**. For future documents, you can re-use the template created by the wizard, just as you would use any other template.

You may have to open the Template Manager and click **Refresh** on the **Action** menu to have any new templates appear in the listings.

### Note

In this release of LibreOffice, clicking **Finish** reopens the Save As dialog in which you set the file name at Step 4. Clicking **Save** now, in the reopened dialog, causes the file to be saved to the hard drive, and the template to open.

Clicking **Save** in Step 4 only saved the dialog in memory and not to the hard drive.

## Editing a template

You can edit a template's styles and content, and then, if you wish, you can reapply the template's styles to documents that were created from that template. Note that you can only reapply styles. You cannot reapply content.

To edit a template:

- 1) From the Menu bar, choose **File > New > Templates**. The Template Manager dialog opens.
- 2) Navigate to the template that you want to edit. Click once on it to activate the file handling controls (see Figure 1). Click **Edit**. The template opens in LibreOffice.
- 3) Edit the template just as you would any other document. To save your changes, choose **File > Save** from the Menu bar.

## Updating a document from a changed template

The next time you open a document that was created from the changed template, the following message appears.

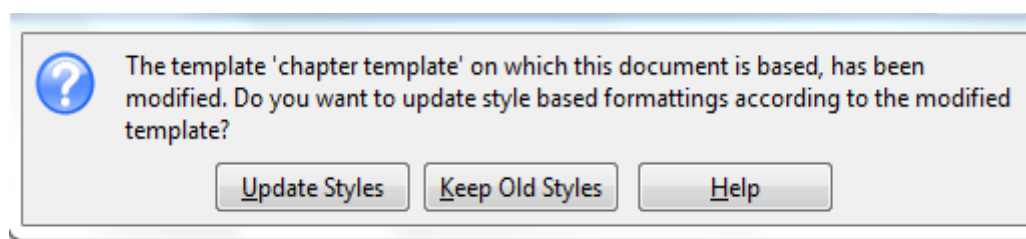


Figure 4. Update styles message

Click **Update Styles** to apply the template's changed styles to the document. Click **Keep Old Styles** if you do not want to apply the template's changed styles to the document (but see the Caution notice below).

## Caution



If you choose **Keep Old Styles** in the message box shown in Figure 4, that message will not appear again the next time you open the document after changing the template it is based on. You will not get another chance to update the styles from the template, although you can use the macro given in the Note below to re-enable this feature.

## Note

To re-enable updating from a template:

- 1) Use **Tools > Macros > Organize Macros > LibreOffice Basic**. Select the document from the list, click the expansion symbol (+ or triangle), and select Standard. If Standard has an expansion symbol beside it, click that and select a module.
- 2) If the **Edit** button is active, click it. If the Edit button is not active, click **New**.
- 3) In the Basic window, enter the following:

```
Sub FixDocV3
  ' set UpdateFromTemplate
  oDocSettings = ThisComponent.createInstance( _
    "com.sun.star.document.Settings" )
  oDocSettings.UpdateFromTemplate = True
End Sub 'FixDocV3
```
- 4) Click the **Run BASIC** icon, then close the Basic window.
- 5) Save the document.

Next time when you open this document you will have the update from template feature back.

## Adding templates obtained from other sources

You can download templates for LibreOffice from many sources, including the official template repository at <http://templates.libreoffice.org/>, and install them on your computer. On other websites you may find collections of templates that have been packaged into extension (OXT) files. These are installed a little differently, as described below.

### Installing individual templates

To install individual templates:

- 1) Download the template and save it anywhere on your computer.
- 2) Import the template into a template folder by following the instructions in “Importing a template” on page 13.

## Tip

You can manually copy new templates into the template folders. The location varies with your computer's operating system. To learn where the template folders are stored on your computer, go to **Tools > Options > LibreOffice > Paths**.

### Installing collections of templates

The Extension Manager provides an easy way to install collections of templates that have been packaged as extensions. Follow these steps:

- 1) Download the extension package (OXT file) and save it anywhere on your computer.



- 2) In Writer, select **Tools > Extension Manager** from the Menu bar. In the Extension Manager dialog (Figure 5), click **Add** to open a file browser window.
- 3) Find and select the package of templates you want to install and click **Open**. The package begins installing. You may be asked to accept a license agreement.
- 4) When the package installation is complete, the templates are available for use through **File > New > Templates** and the extension is listed in the Extension Manager.

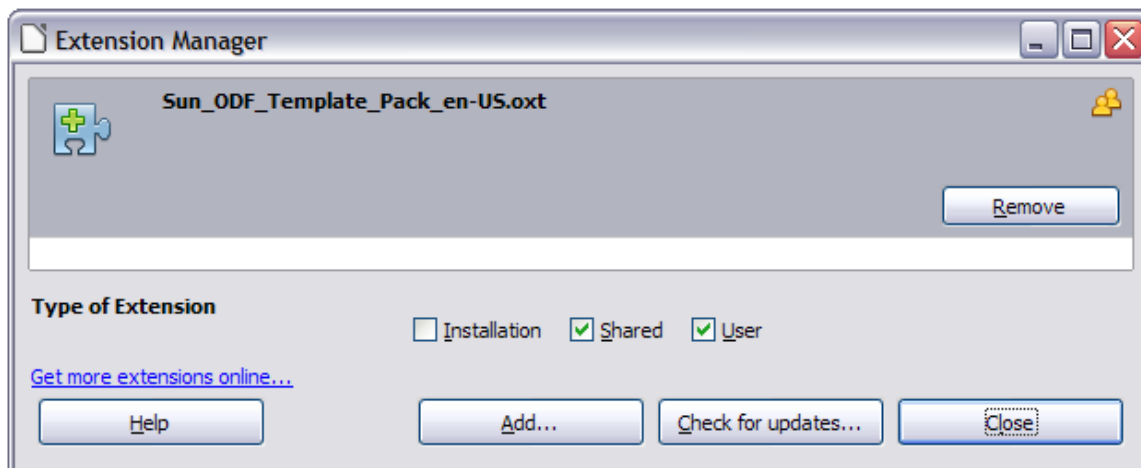


Figure 5: Newly-added package of templates

Extension packages may also be installed by double-clicking the file, and then accepting the installation and any license agreement which is requested.

See Chapter 16, Customizing Writer, for more about the Extension Manager.

## Setting a default template

If you create a document by choosing **File > New > Text Document** from the Menu bar, Writer creates the document from the default template for text documents. You can, however, set a custom template to be the default. You can reset the default later, if you choose.

### Note for Windows users

You may know that Microsoft Word employs a `normal.dot` or `normal.dotx` file for its default template and how to regenerate it. LibreOffice does not have a similar default template file; the “factory defaults” are embedded within the software.

## Setting a custom template as the default

You can set any template to be the default, as long as it is in one of the folders displayed in the Template Manager dialog. If necessary, you can add the template to a folder as described in “Importing a template” on page 13.

To set a custom template as the default:

- 1) From the Menu bar, choose **File > New > Templates** to open the Template Manager dialog.
- 2) In the Template Manager dialog, open the folder containing the template that you want to set as the default, then select the template.
- 3) Click the **Set As Default** icon above the list of templates (see Figure 6).

The next time that you create a document by choosing **File > New > Text Document**, the document will be created from this template.

Although many important settings can be changed in the **Tools > Options** dialog (see Chapter 2, Setting up Writer), for example default fonts and page size, more advanced settings (such as page margins) can only be changed by replacing the default template with a new one.

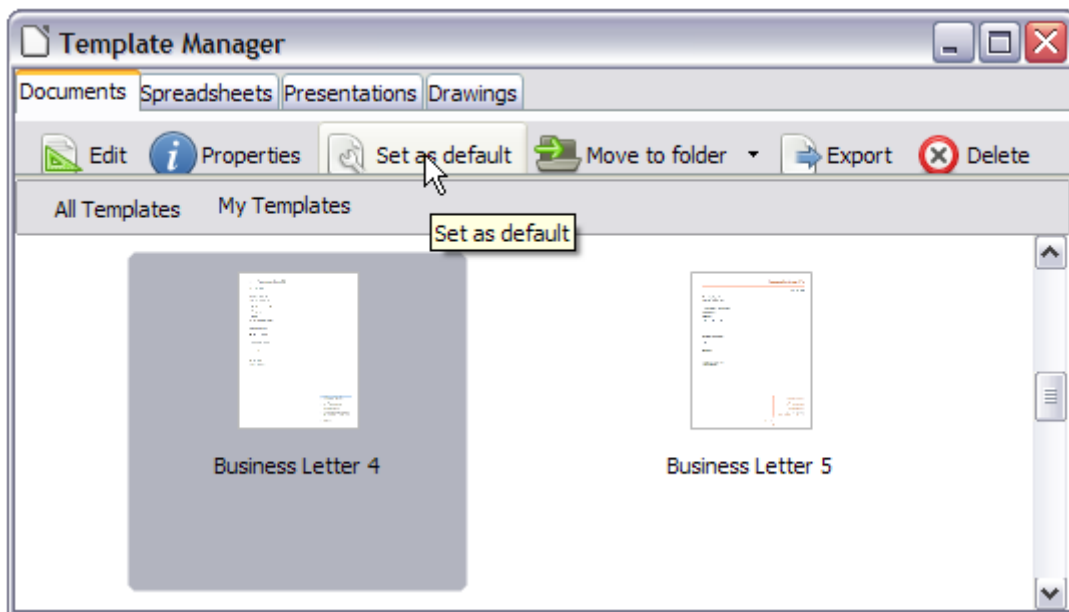


Figure 6: Setting a default template using the Template Manager dialog

## Resetting Writer's default template as the default

To re-enable Writer's default template as the default:

- 1) In the Template Manager dialog (Figure 7), click the **Action Menu** icon on the right.
- 2) Point to **Reset Default Template** on the drop-down menu, and click **Text Document**.

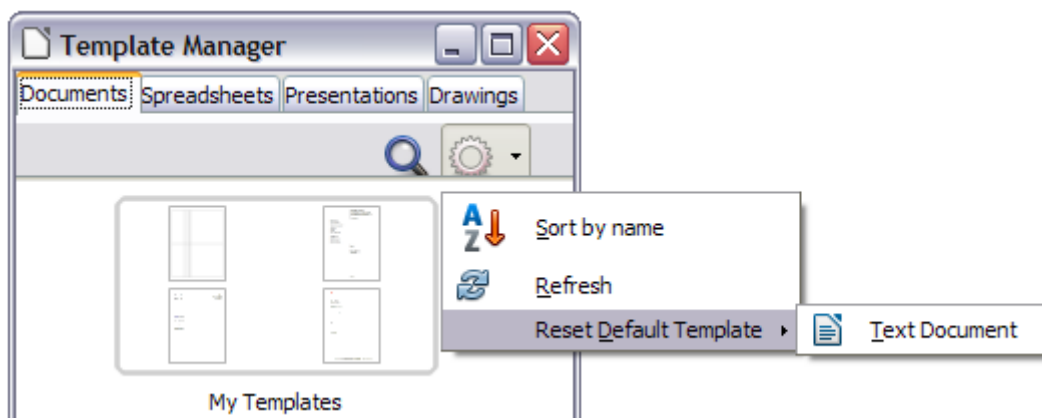


Figure 7: Resetting the default template

This choice does not appear unless a custom template had been set as the default, as described in the previous section.

The next time that you create a document by choosing **File > New > Text Document**, the document will be created from Writer's default template.

## Associating a document with a different template

---

At times you might want to associate a document with a different template, or perhaps you're working with a document that did not start from a template.

One of the major advantages of using templates is the ease of updating styles in more than one document, as described in Chapter 7, *Working with Styles*. If you update styles in a document by loading a new set of styles from a different template (as described in Chapter 7), the document has no association with the template from which the styles were loaded—so you cannot use this method. What you need to do is associate the document with the different template.

### Note

In LibreOffice 3.x, you could use the Template Changer extension to simplify this process. Unfortunately, this extension does not work in LibreOffice 4.0.

For best results, the names of styles should be the same in the existing document and the new template. If they are not, you will need to use **Edit > Find & Replace** to replace old styles with new ones. See Chapter 3 of the *Writer Guide, Working with Text*, for more about replacing styles using Find & Replace.

- 1) Use **File > New > Templates**. In the Template Manager dialog, double-click the template you want to use. A new document opens, containing any text or graphics that were in the template. Delete any unwanted text or graphics from this new document.
- 2) Open the document you want to change. (It opens in a new window.) Press *Ctrl+A* to select everything in the document. Click in the blank document created in step 1. Press *Ctrl+V* to paste the content from the old document into the new one.
- 3) Update the table of contents, if there is one. Close the old file without saving. Use **Save As** to save this new file with the name of the file from which content was taken. Confirm you wish to overwrite the old file when asked.

## Organizing templates

---

Writer can only use templates that are in LibreOffice template folders. You can, however, create new LibreOffice template folders and use them to organize your templates. For example, you might have one template folder for report templates and another for letter templates. You can also import and export templates.

To begin, choose **File > New > Templates** from the Menu bar to open the Template Manager dialog.

### Creating a template folder

To create a template folder:

- 1) In the Template Manager dialog, double-click any folder, then click any template to activate the row of icons above the list of templates (see Figure 8).
- 2) Click the **Move to folder** button and choose **New folder** from the drop-down menu.

In the pop-up dialog, type a name for the new folder and click **Accept**.

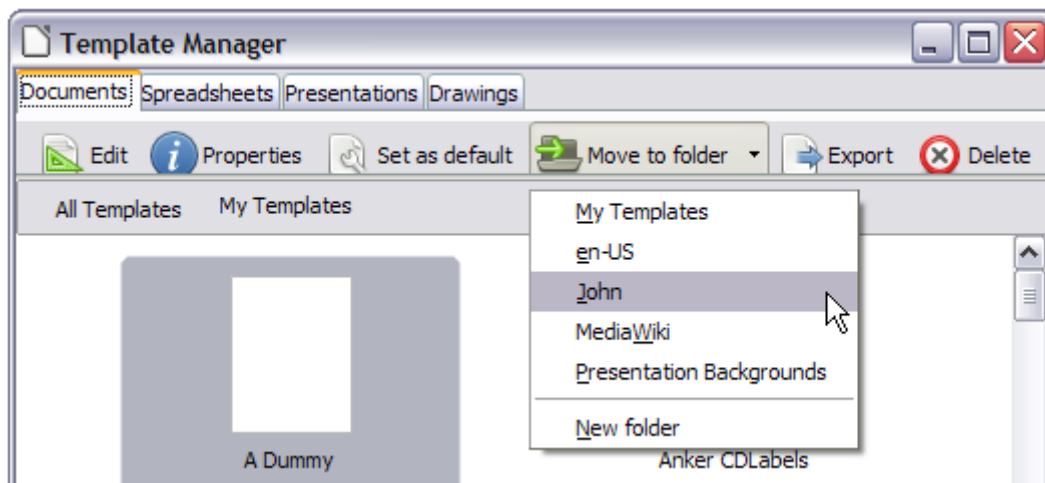


Figure 8: Template file handling icons

## Deleting a template folder

You cannot delete template folders supplied with LibreOffice or installed using the Extension Manager; you can only delete template folders that you have created.

To delete a template folder:

- 1) In the Template Manager dialog, select the folder that you want to delete.
- 2) In the row of icons above the list of folders, click the **Delete** button. A message box appears, asking you to confirm the deletion. Click **Yes**.

### Caution



Folders which contain no files are hidden. If the folder is visible, ensure that you want to delete the files that are inside. You may have to put a dummy template into an empty folder in order to delete it (just select **File > Save As Template** for any file you have opened, move it into the folder to be deleted, and then delete the folder; see Figure 8).

## Moving a template

To move a template from one template folder to another template folder:

- 1) In the Template Manager dialog, double-click the folder that contains the template that you want to move. A list of all the templates contained in that folder appears underneath the folder name.
- 2) Click the template that you want to move and click the **Move to folder** button above the list of templates (see Figure 8).

## Deleting a template

You cannot delete templates supplied with LibreOffice or installed using the Extension Manager; you can only delete templates that you have created or imported.

To delete a template:

- 1) In the Template Manager dialog, double-click the folder that contains the template that you want to delete. A list of all the templates contained in that folder appears underneath the folder name.
- 2) Click the template that you want to delete.
- 3) Click the **Delete** button above the list of templates. A message box appears and asks you to confirm the deletion. Click **Yes**.

## Importing a template

If the template that you want to use is in a different location, you must import it into a LibreOffice template folder.

To import a template into a template folder:

- 1) In the Template Manager dialog, select the folder into which you want to import the template.
- 2) Click the **Import** button above the list of template folders. A standard file browser window opens.
- 3) Find and select the template that you want to import, and then click **Open**. The file browser window closes and the template appears in the selected folder.

## Exporting a template

To export a template from a template folder to another location:

- 1) In the Template Manager dialog, double-click the folder that contains the template that you want to export. A list of all the templates contained in that folder appears underneath the folder name.
- 2) Select the template that you want to export.
- 3) Click the **Export** button above the list of template folders. The Save As window opens.
- 4) Find the folder into which you want to export the template and click **Save**.